



GREENWAY IMPLEMENTATION

Session 3B : 2:55 - 3:55



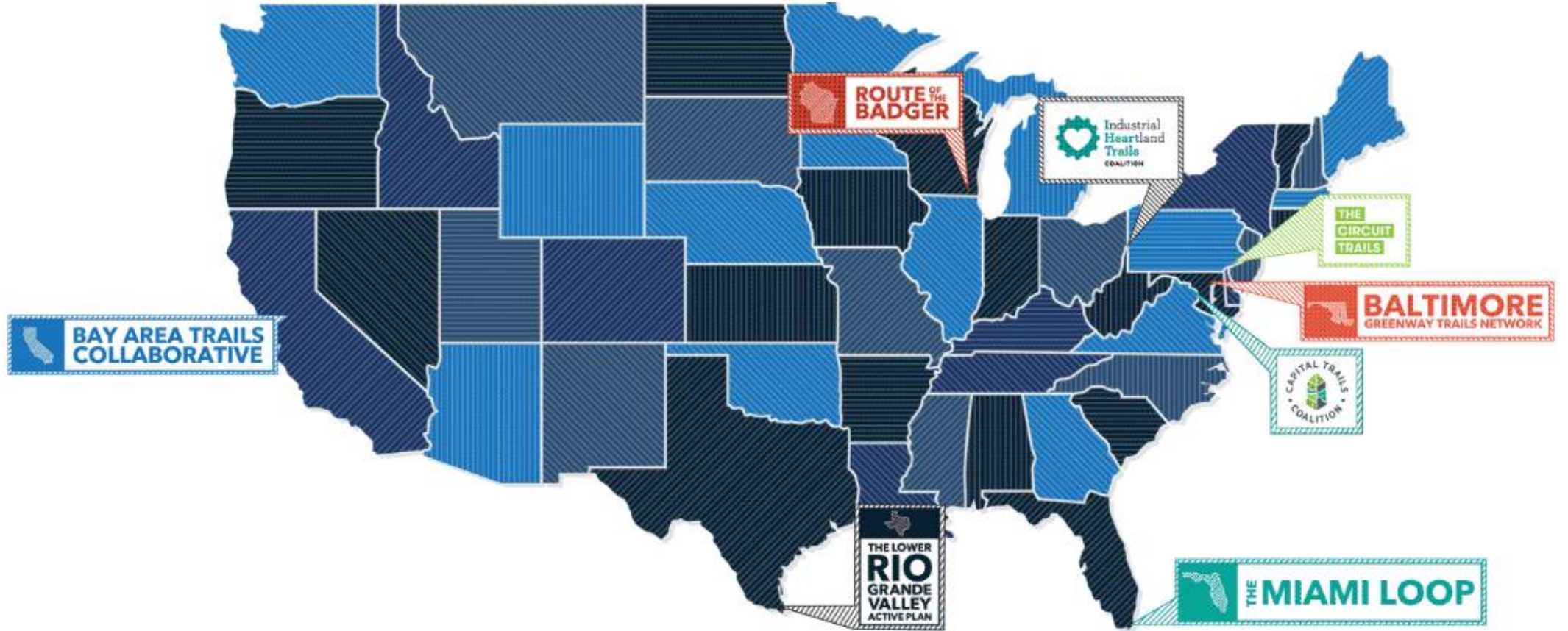
Complete Streets Summit: Greenway Implementation

Liz Sewell, Rails-to-Trails Conservancy



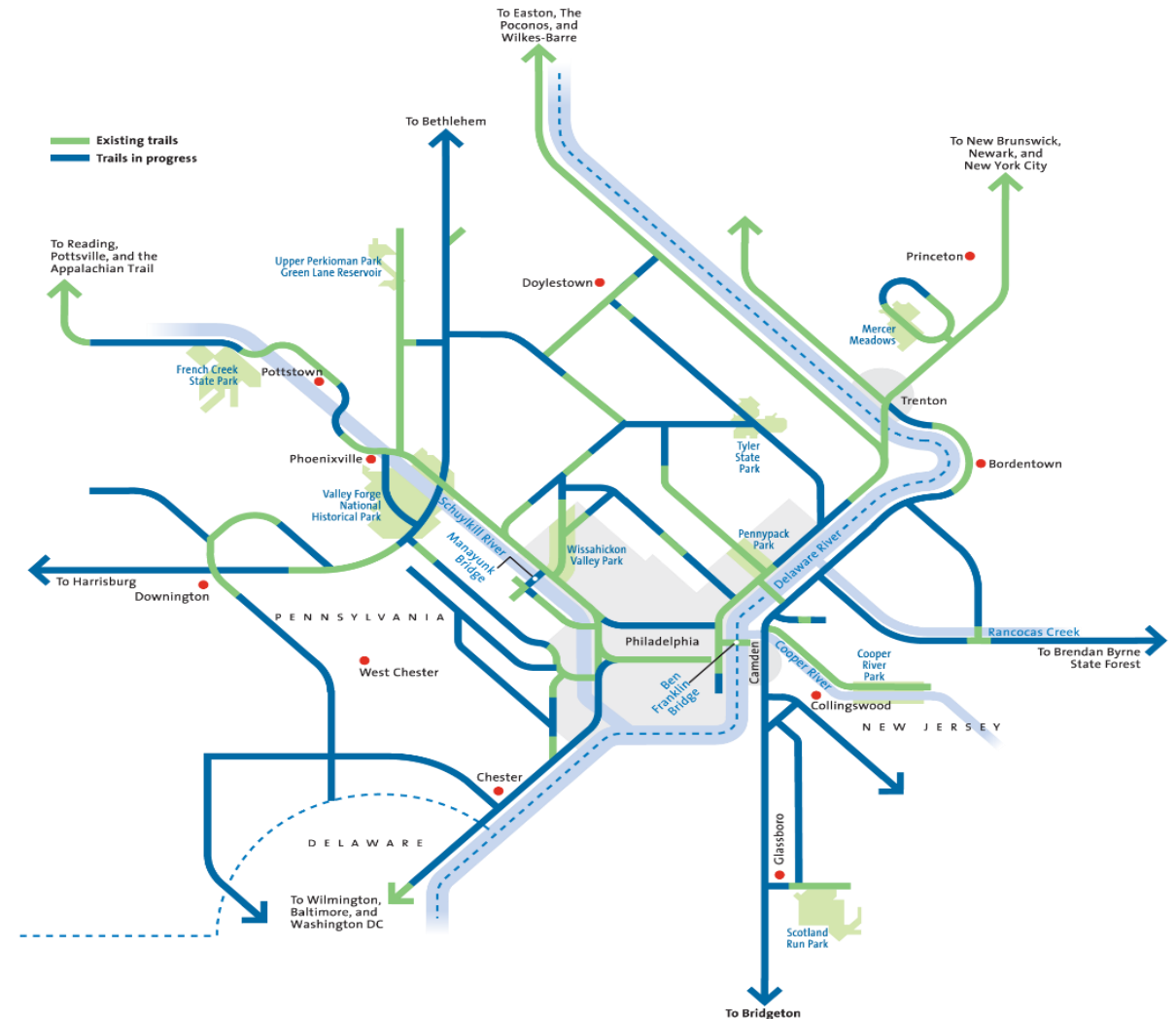
★ TRAIL NATION

rails-to-trails
conservancy



What are the Circuit Trails?

- Interconnected multi-use trail network covering the nine-county region
- Connecting people to jobs, communities, parks, and waterways



Progress on the Circuit Trails

- **Vision:** More than 800 miles of interconnected, multi-use trails
- **Completed:** 325 miles in PA and NJ
- **In Progress & Pipeline:** 204 miles
- **Coming Soon:** 12 miles of new trails

railstotrails.org

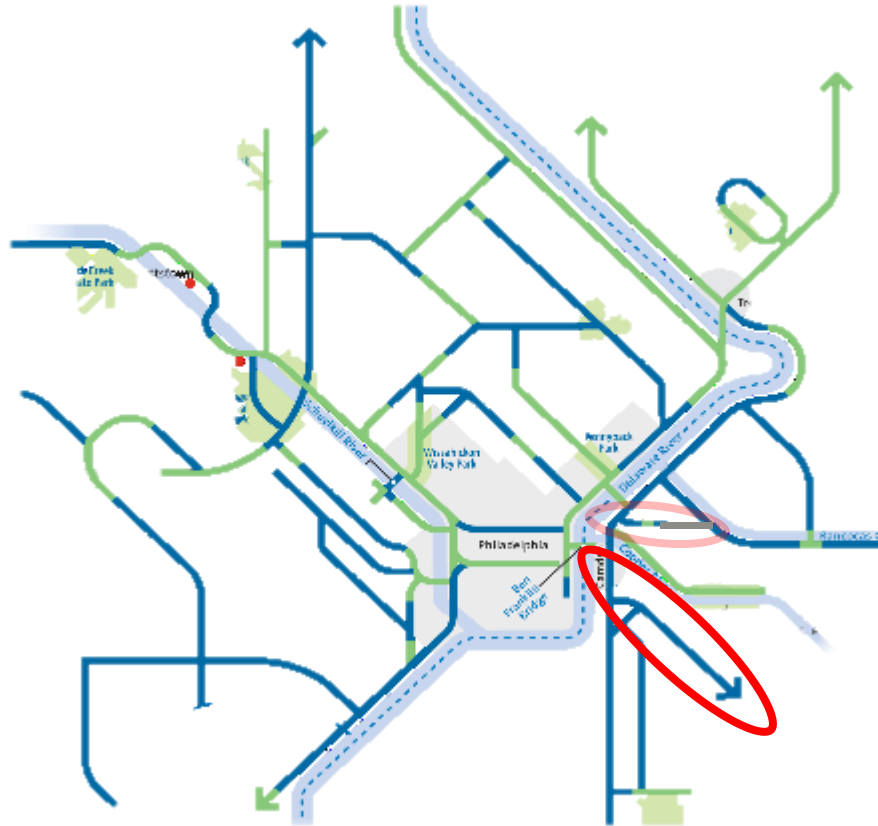


Working Together: The Circuit Trails Coalition

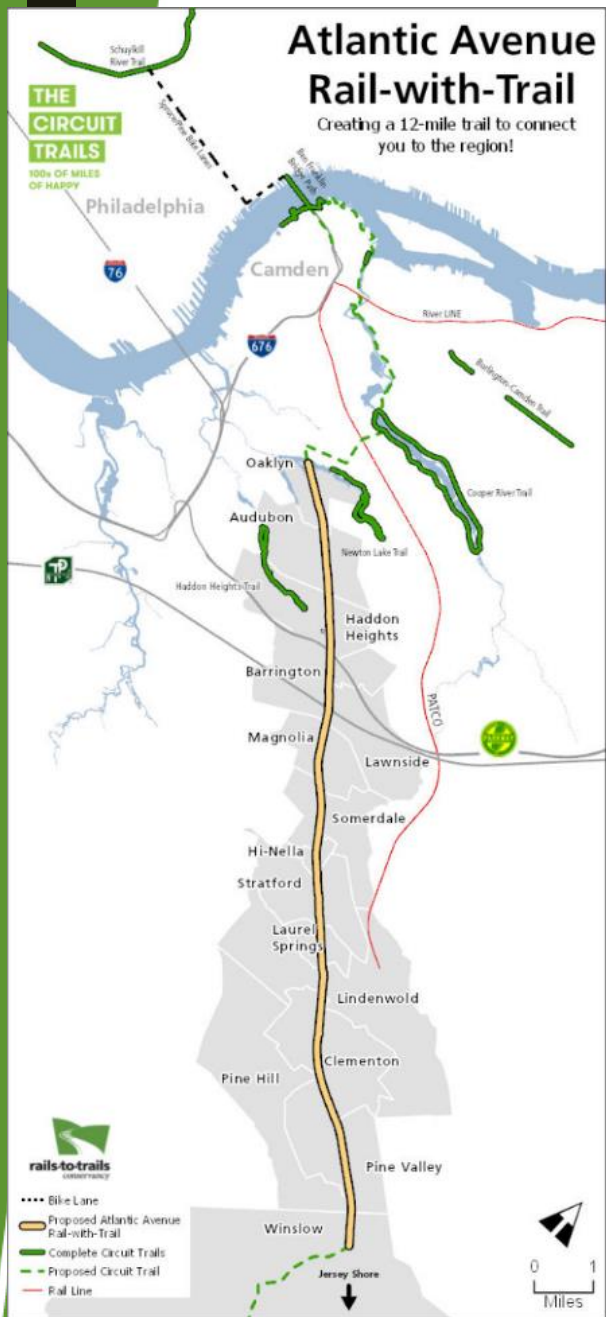
- Created in 2012
- 65+ member coalition of nonprofit organizations, foundations, and agencies advocating for the completion of the Circuit Trails



Benefits of Cross Camden County Trail



- Infuse over \$19.5 million per year into Camden County's local economy through tourist spending
- Increase property value of homes within one mile of trail by \$7,300
- Yield approximately 8,520 new exercisers and an estimated healthcare savings of over \$6.8 million per year.



Atlantic Avenue Rail-with-Trail

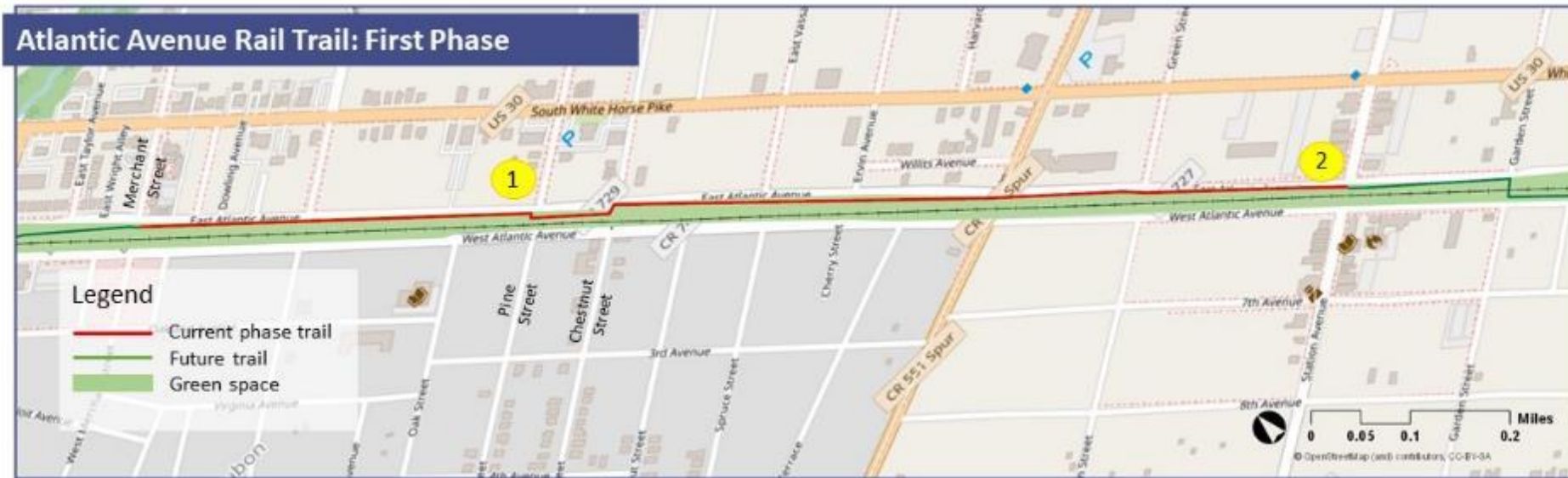


railstotrails.org



rails-to-trails
conservancy

The Vision: Atlantic Avenue Trail: Phase One



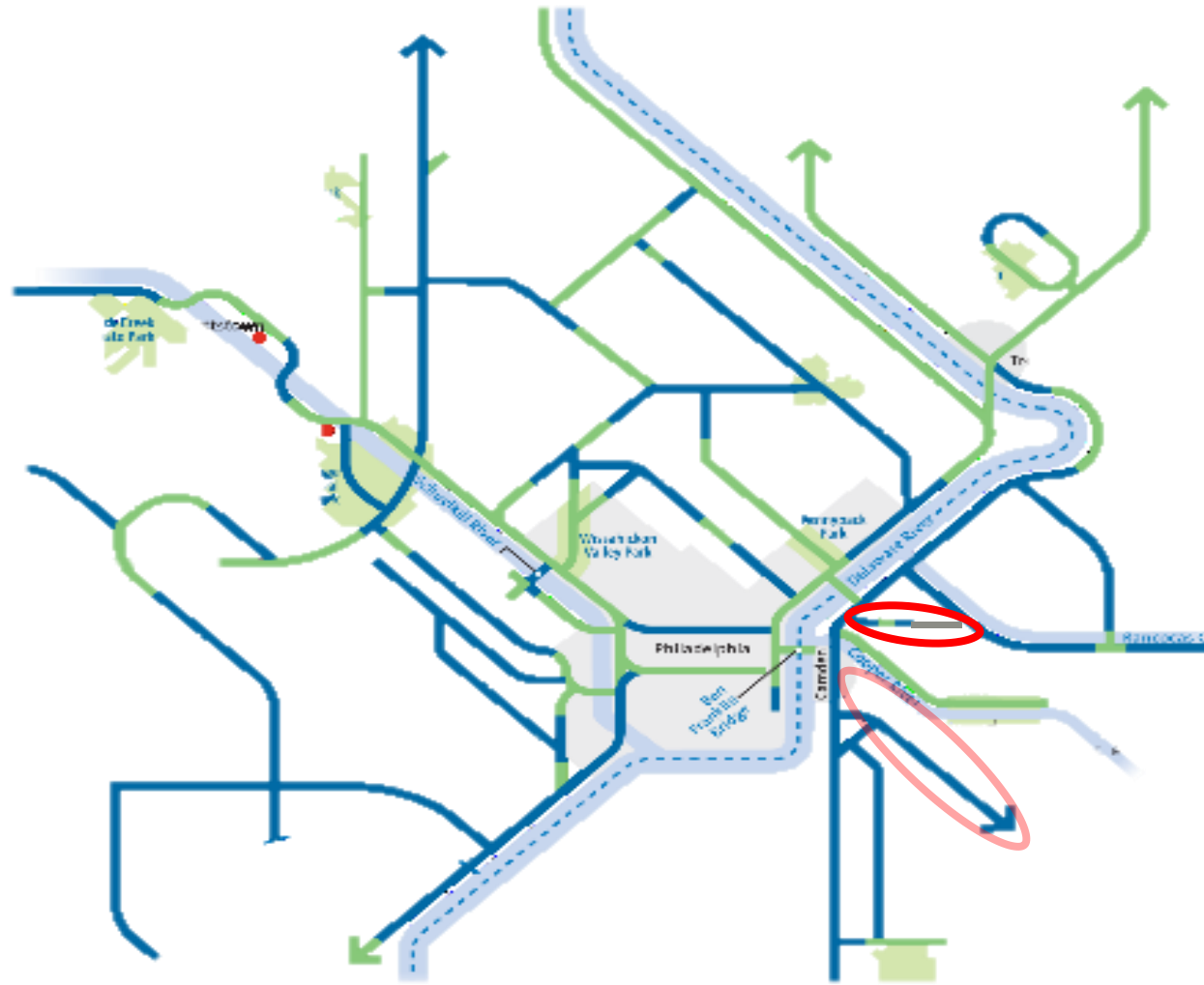
This is the first phase of the Atlantic Avenue Trail Project, connecting Merchant Street in Audubon with Station Avenue in Haddon Heights. This portion of trail is part of the Circuit Trails network and is a critical segment of the Cross County Trail that will extend from North Camden toward Atlantic County.



railstotrails.org



Burlington-Camden Trail

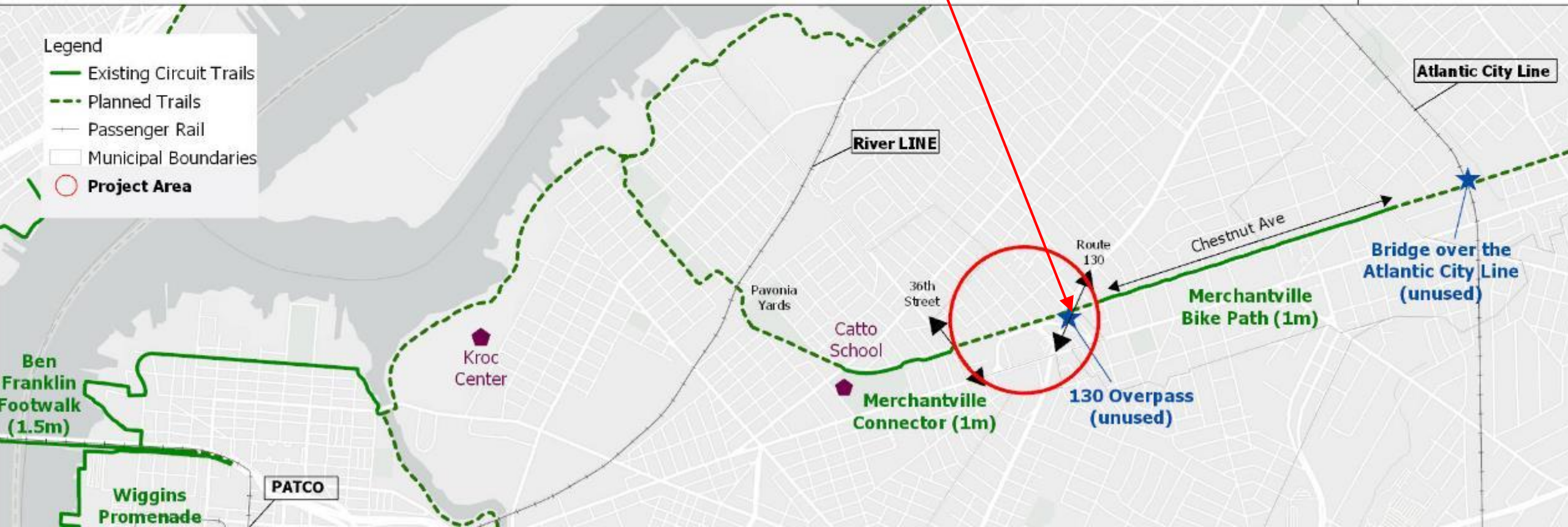


THE CIRCUIT TRAILS

Burlington-Camden Trail

Connection through Pennsauken

10 Mile Long Rail-Trail and Rail-with-Trail





Thank you!

**Elizabeth Sewell, Trail Development Manager, Northeast Region
Rails-to-Trails Conservancy
(908) 705 5762
elizabeths@railstotrails.org**

railstotrails.org





MIDDLESEX GREENWAY

Rick Lear
Director of Parks and Recreation





Using the Conservation Blueprint to Incorporate Greenways into Bicycle and Pedestrian Trail Networks

Tim Brill, PP / AICP
Central Jersey Project Manager
New Jersey Conservation Foundation
NJ Complete Streets Summit
September 24, 2019

NJCF Goal: A Park or Trail within a 10 Minute Walk of Every NJ Resident

Garden State Greenways

- A dynamic online planning tool for open space and farmland preservation

Support for:

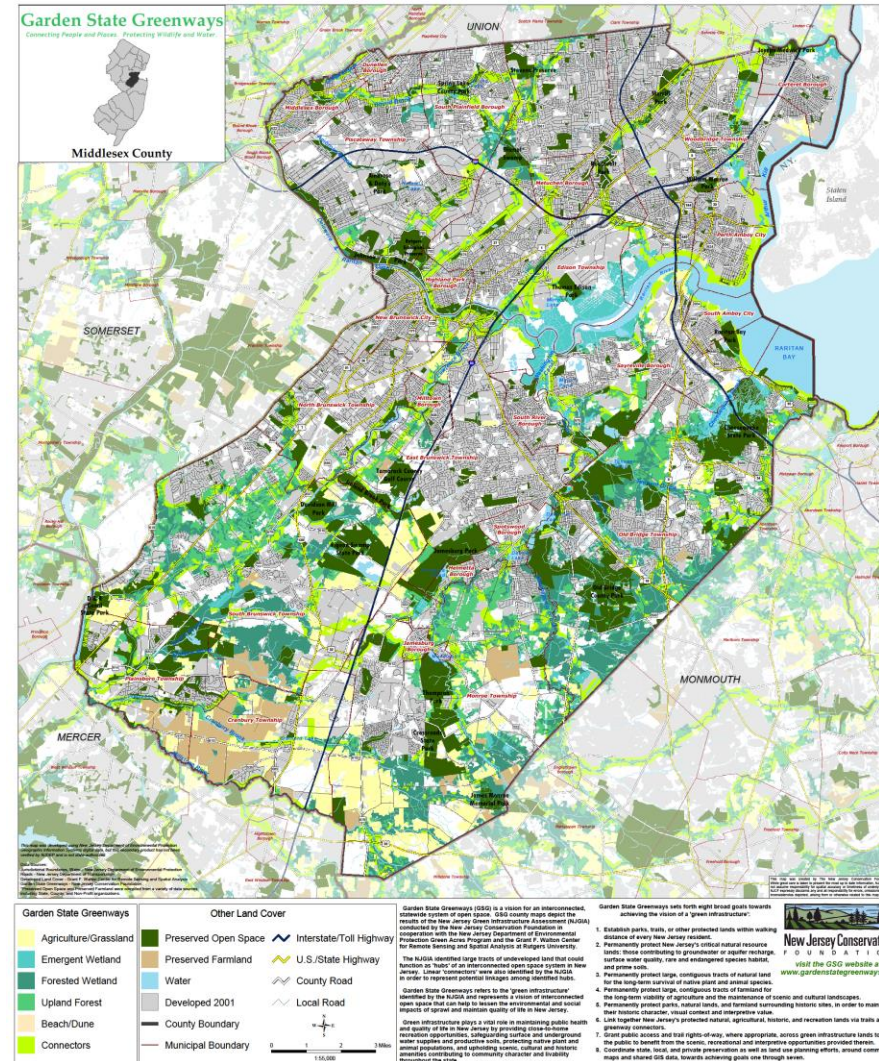
- ✓ Complete Streets
- ✓ Safe Routes to School
- ✓ Safe Routes to Transit
- ✓ Accessible Trail Networks



Hubs & Connectors

Garden State Greenways identifies **hubs** - larger areas of undeveloped land with important natural resource values - and linear **connectors** between these hubs.

Garden State Greenways provides a statewide vision, goals, detailed maps and powerful Geographic Information System (GIS) data and planning tools to help coordinate efforts of private groups and government agencies.



"Greenways allow us to treat land and water as a system, as interlocking pieces in a puzzle, not as isolated entities."
Ed McMahon, Director, American Greenways Program

WELCOME TO NJ MAP

AN INTERACTIVE ATLAS OF NEW JERSEY FROM ROWAN UNIVERSITY

[Map Gallery](#) ↗

[Our New Look](#)



RowanUniversity
SCHOOL OF EARTH
& ENVIRONMENT

Department of Geography, Planning, and Sustainability



NJ MAP / Conservation Blueprint

a free, online map viewer / interactive atlas for:

- ecological resources,
- environmental education and
- sustainable communities.

Created by the Geospatial Research Lab at Rowan University's Department of Geography, Planning and Sustainability.

Designed to connect NJ citizens, municipalities and advocacy groups with real time geospatial tools to support their planning and conservation efforts.

Organized into a suite of publicly available geospatial tools.

Each NJ MAP project focuses on a specific New Jersey environmental, land use and sustainability issue.

Intended users include Sustainable Jersey Green Teams, municipal planning boards, environmental commissions, land trusts, watershed organizations, trail planners and concerned citizens among others.

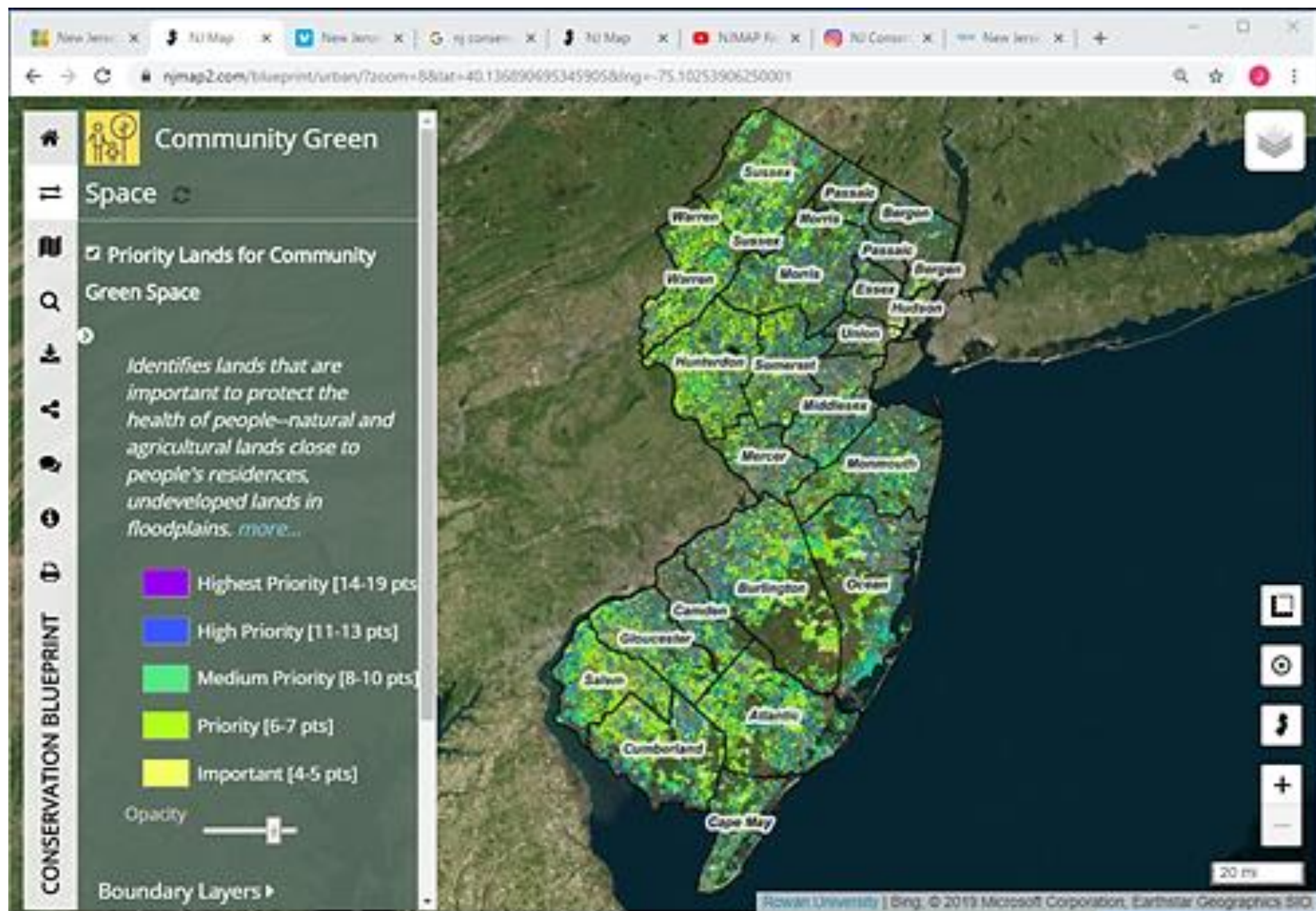
- **NJ MAP vision: to make statewide GIS data relatable and easy to understand.**

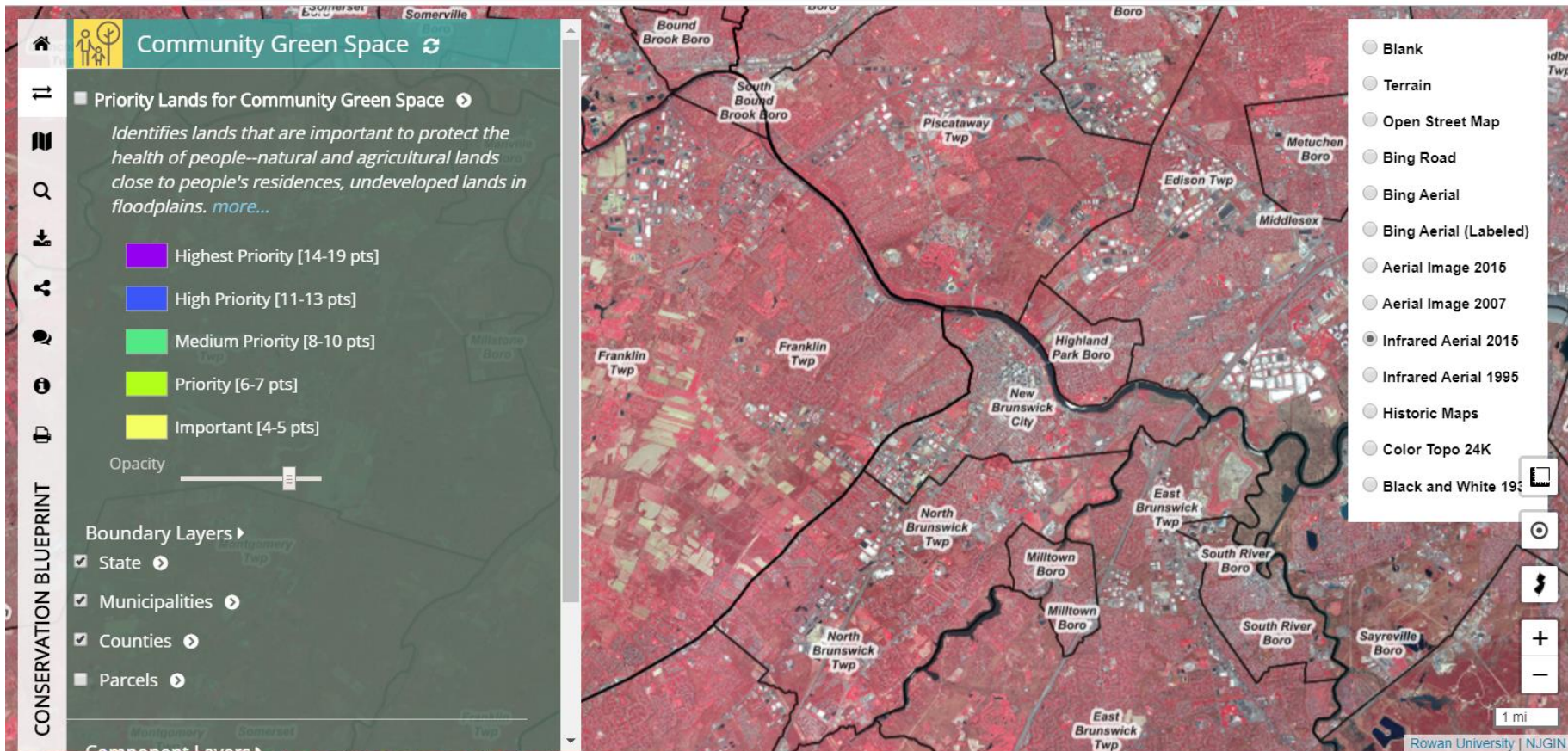


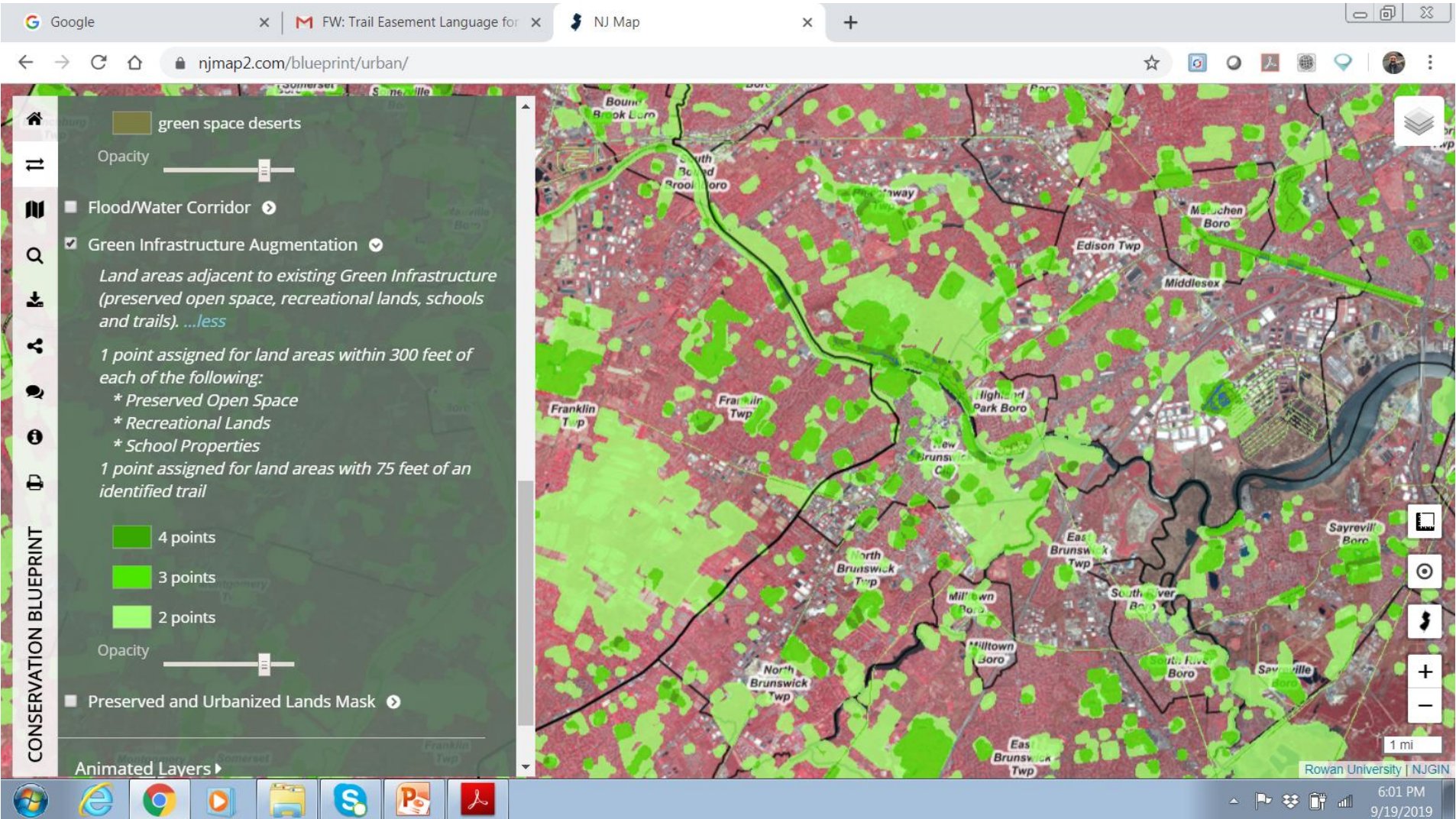
Five Maps

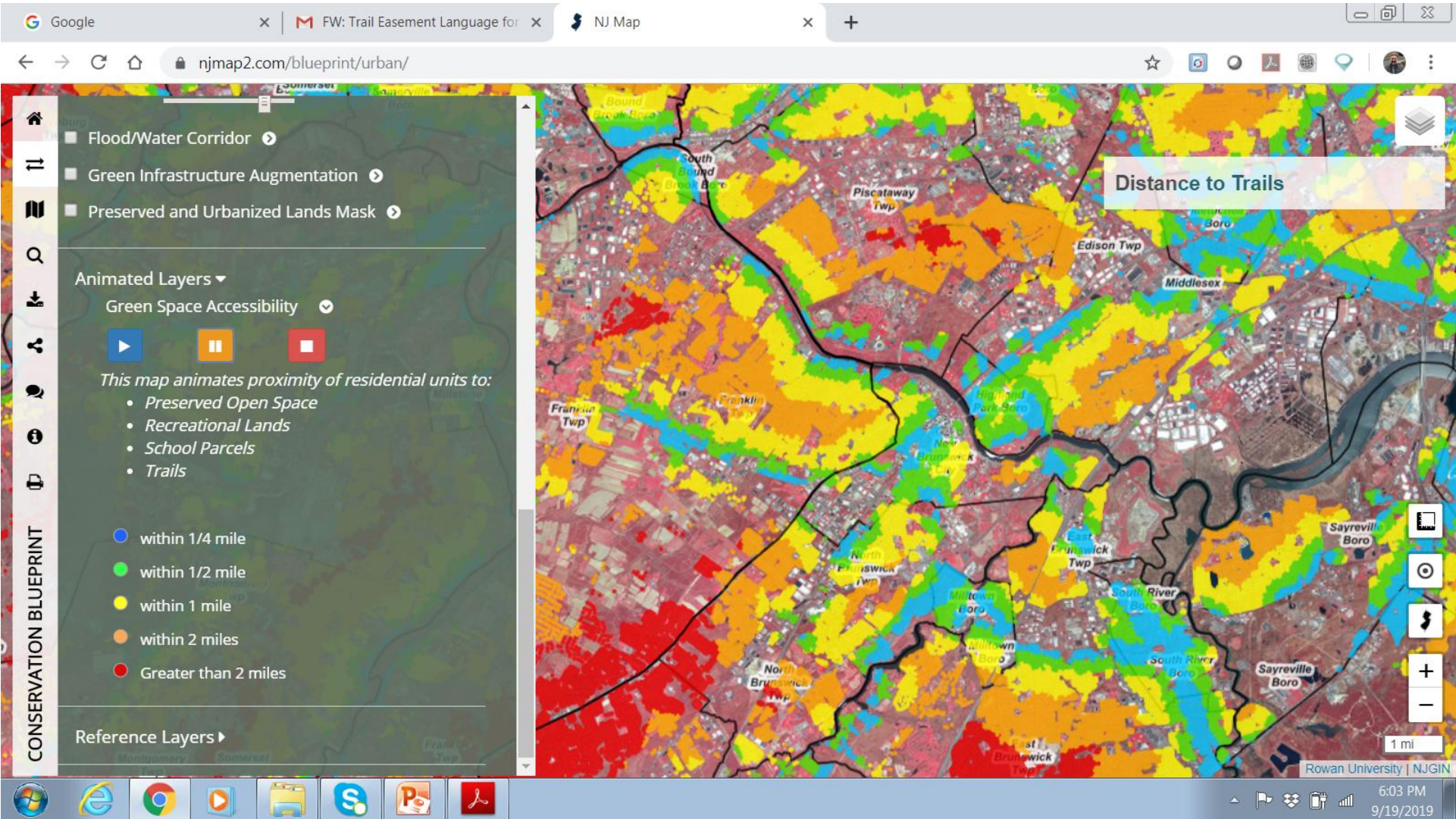
- **Blueprint Overview**
- **Community Green Space**
- **Agriculture**
- **Ecological**
- **Water**

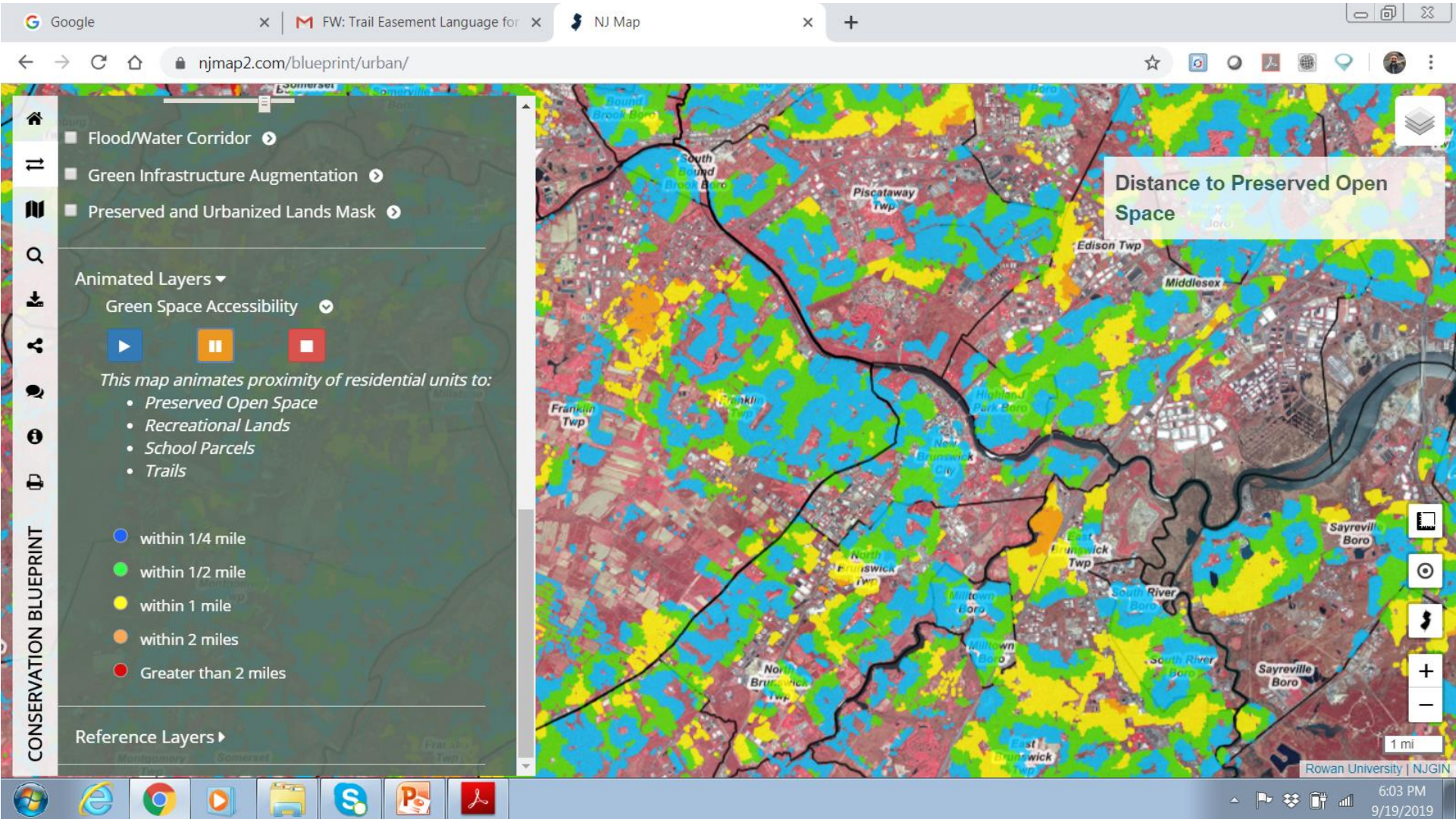


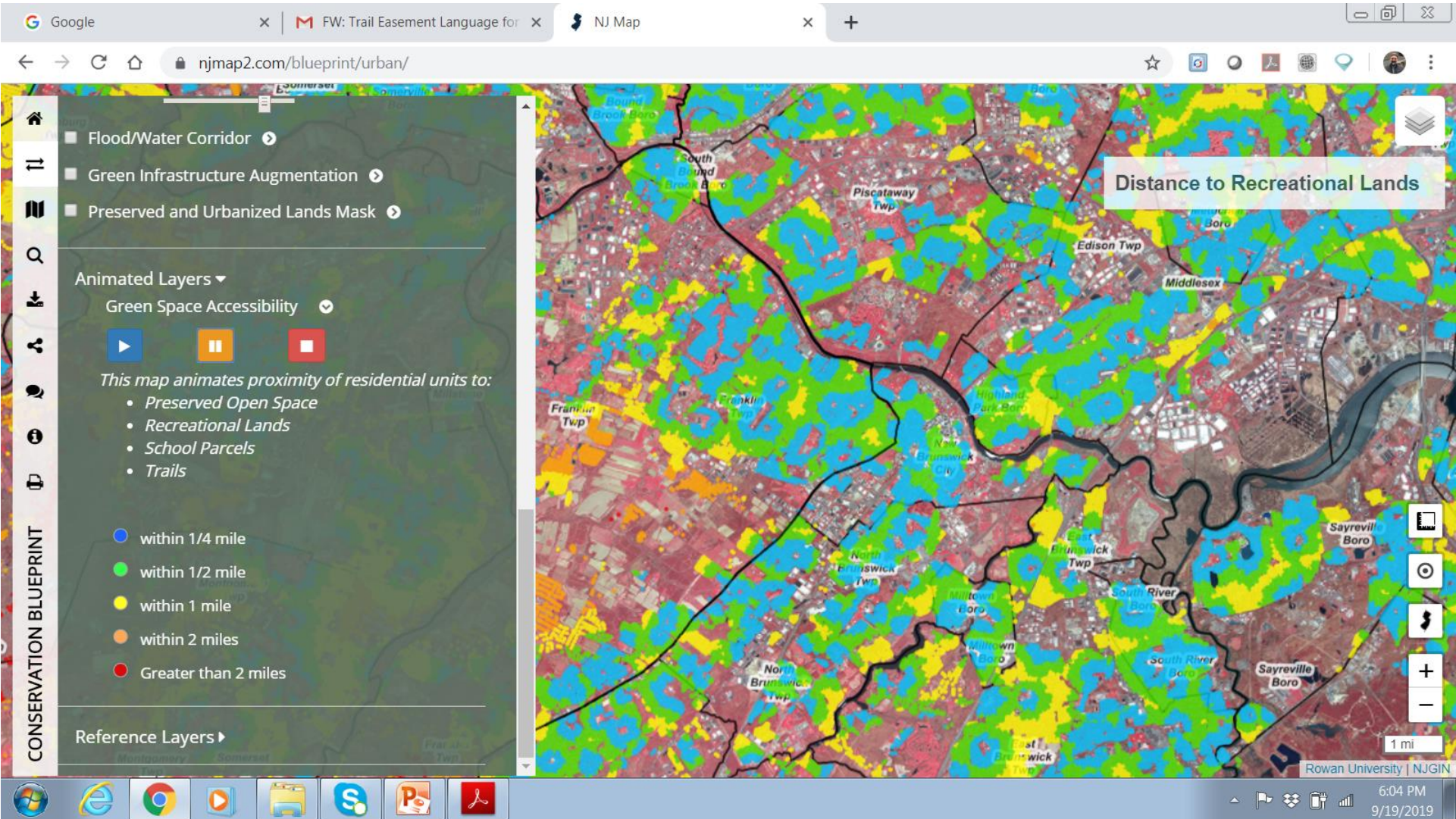


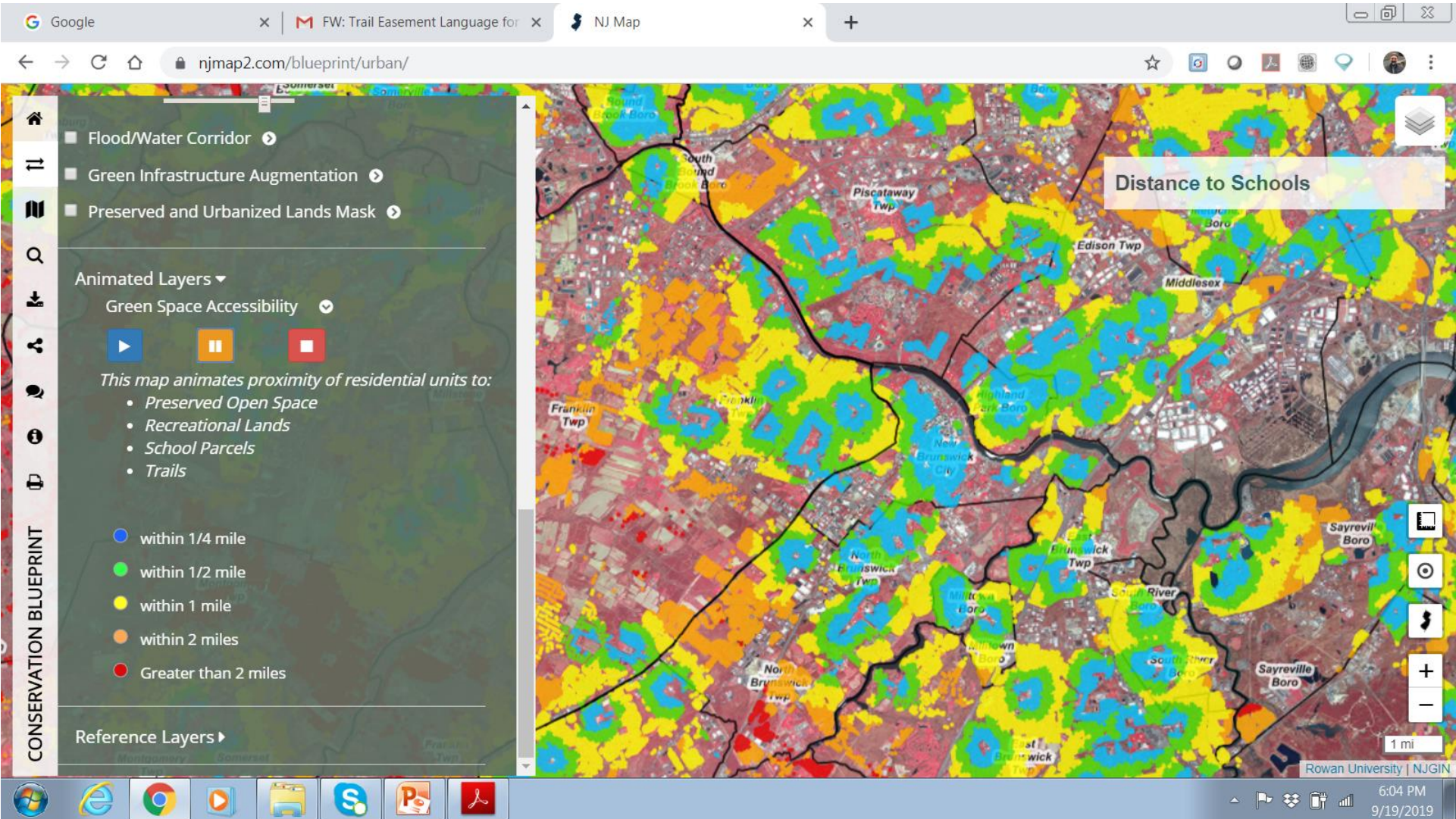












Google

FW: Trail Easement Language for

NJ Map

njmap2.com/blueprint/urban/

CONSERVATION BLUEPRINT

DKWI Clusters & Focus Areas

Urban Census Tracts

☒ Open Space

☐ Recreational and Athletic Fields

Lands Identified as Open Space. ...less

This layer represents lands delineated as Open Space that may or may not be in permanent preservation. The layer is a composite of GIS data from various sources some of which have the Preserved Open Space status confirmed and Other Open Space for which the land is currently identified as open space but not necessarily in permanent preservation or the preservation status is unknown. This layer is provided AS-IS with the understanding that it is only appropriate for general planning purposes and information on individual properties should be field verified. The State is currently compiling a comprehensive Open Space Inventory which, when released, will replace this layer.

Preserved Open Space

Other Open Space

Opacity

Land uses identified as "Recreation" or "Athletic Fields." more...

Rowan University | NJGIN, NJ DEP

6:07 PM
9/19/2019

Google

FW: Trail Easement Language for

NJ Map

njmap2.com/blueprint/urban/

CONSERVATION BLUEPRINT

☒ Trails

Identifies existing and proposed trails in NJ. ...less

This is a compilation of trails data from a variety of sources. Data was mapped at various scales and to different locational accuracy, therefore this data should be used as a planning guide only. This dataset is not comprehensive.

Existing

Proposed

Unknown

Opacity

☒ Trails (State Parks)

Official recreational trails on lands owned and managed by New Jersey State Park Service (NJSPS). ...less

Data source: <https://njogis-newjersey.opendata.arcgis.com/datasets/nj-state-park-service-trails>

Additional Information

Opacity

☒ Trailheads

Rowan University | Bing, © 2019 Microsoft Corporation, Earthstar Geographics SIO, NJ DEP Green Acres Program

6:11 PM
9/19/2019

Google

FW: Trail Easement Language for

NJ Map

njmap2.com/blueprint/urban/

☆

CONSERVATION BLUEPRINT

Trails

Identifies existing and proposed trails in NJ. ...less

This is a compilation of trails data from a variety of sources. Data was mapped at various scales and to different locational accuracy, therefore this data should be used as a planning guide only. This dataset is not comprehensive.

Existing

Proposed

Unknown

Opacity

Trails (State Parks)

Official recreational trails on lands owned and managed by New Jersey State Park Service (NJSPS). ...less

Data source: <https://njogis-newjersey.opendata.arcgis.com/datasets/nj-state-park-service-trails>

Additional Information

Opacity

Trailheads

Piscataway Twp

Highland Park Boro

Highland Park Boro

New Brunswick City

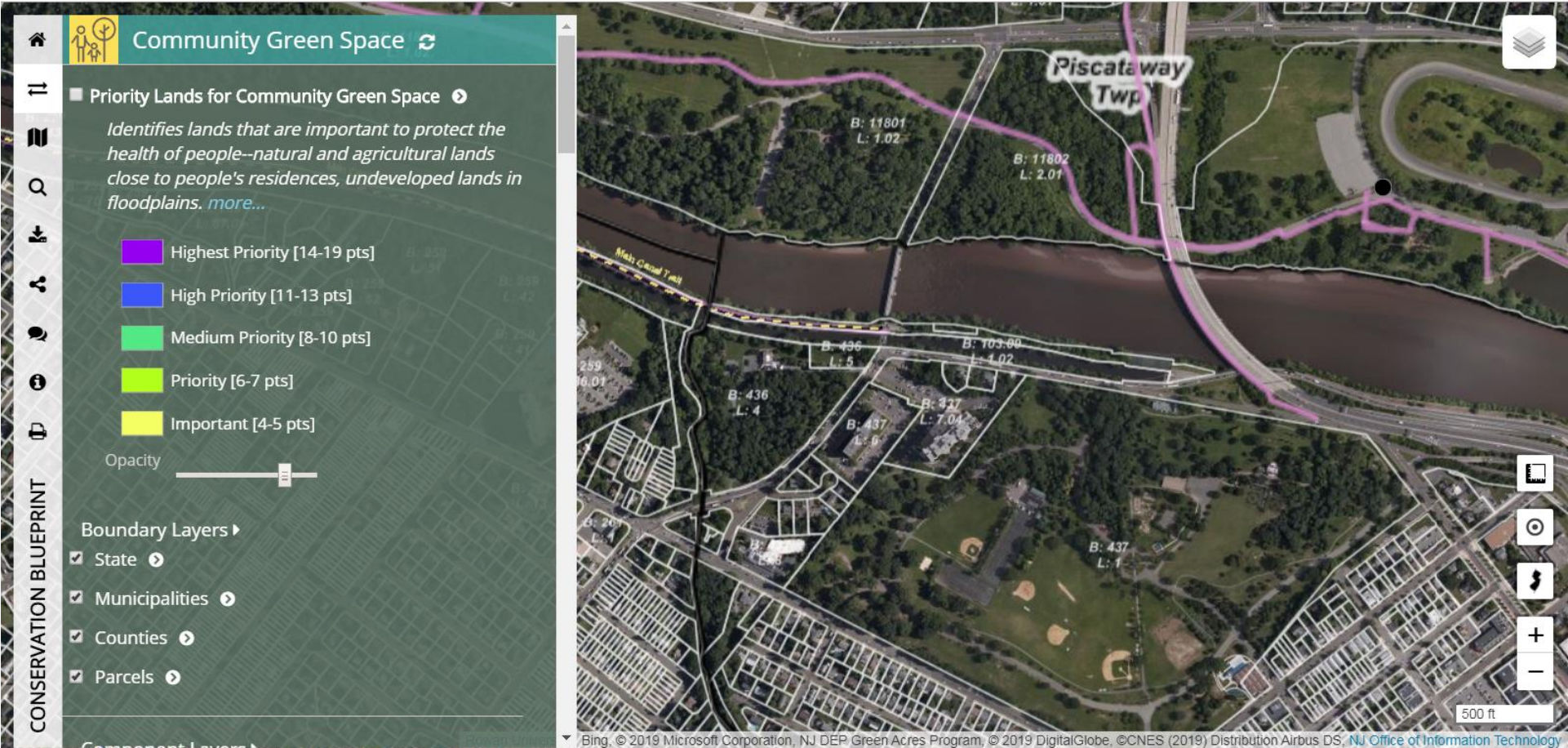
New Brunswick City

2000 ft

Rowan University | Bing, © 2019 Microsoft Corporation, NJ DEP Green Acres Program, © 2019 DigitalGlobe, ©CNES (2019) Distribution Airbus DS

6:13 PM

9/19/2019



Google

FW: Trail Easement Language for

NJ Map

njmap2.com/blueprint/urban/

☆

CONSERVATION BLUEPRINT

Open Space

Recreational and Athletic Fields

School Parcels

Residential Units

Residential Units (White)

Residences Remote from Greenspace

Acres of Green Space within 1/2 mile

Urban Greenspace Desert

Archaeological Sites

Brownfields

☒ County Road Sidewalks

Sidewalks

Opacity

Floodplains

Golf Courses

Historic Districts and Properties

Impervious Surface for Restoration Priorities

Land Use Barriers

Median Age, Male / Female

New Brunswick City, Middlesex County NJ

PARCEL: 1213_437_1

TAX CLASS: Public Property

OS PRESERVED: YES

FPP PRESERVED: NO

AREA: 78.0 acres

MEAN BLUEPRINT PRIORITY VALUES:

Agricultural: 0.0

Community Green Space: 1.0

Ecological: 5.1

Water: 1.3

Show in Parcel Explorer

Piscataway Twp

B: 11801
L: 1.02

B: 436
L: 5

B: 436
L: 4

B: 437
L: 9

B: 437
L: 1

500 ft

© 2019 Microsoft Corporation, NJ DEP Green Acres Program, © 2019 DigitalGlobe, ©CNES (2019) Distribution Airbus DS, NJ Office of Information Technology, NJDOT

6:17 PM

9/19/2019

Parcel Explorer

Search Results Info

1213_437_1
New Brunswick City Block: 437 Lot: 1

Tax Records

Planning

Open Space Preservation Status

Farmland Preservation Status

Measurements

Wastewater Service Area

Public Community Water Service Area

Land Use/Cover 2012 - Detailed Level 3)

Land Use/Cover 2012 - General (Level 1)

Farm Soil Classification

HUC-11 Watersheds

HUC-14 Watersheds

Groundwater Recharge Rates

% of Parcel in Vernal Pools

Conservation Blueprint Models

Rowan University | Bing, NJ Office of Information Technology © 2019 Microsoft Corporation, © 2019 HERE, © 2019 DigitalGlobe, © CNES (2019) Distribution Airbus DS

6:18 PM
9/19/2019

Parcel Explorer

Search Results Info

1213_437_1
New Brunswick City Block: 437 Lot: 1

Tax Records

Planning

Open Space Preservation Status

Farmland Preservation Status

Measurements

Wastewater Service Area

Public Community Water Service Area

Land Use/Cover 2012 - Detailed Level 3)

Land Use/Cover 2012 - General (Level 1)

Farm Soil Classification

HUC-11 Watersheds

HUC-14 Watersheds

Groundwater Recharge Rates

% of Parcel in Vernal Pools

Conservation Blueprint Models

Rowan University | Bing, NJ Office of Information Technology © 2019 Microsoft Corporation, © 2019 HERE, © 2019 DigitalGlobe, © CNES (2019) Distribution Airbus DS

6:18 PM
9/19/2019

Parcel Explorer

SearchResultsInfo

1213_437_1
New Brunswick CityBlock: 437Lot: 1

Tax Records

Retrieved2019-09-15

Publication Date2014-12-10

MunicipalityNew Brunswick City

Location321 Easton Ave

Owned byCity Of New Brunswick

Address78 Bayard St, Po Box 269, New Brunswick, NJ 08903

Tax ClassificationPublic Property

Land Value\$15,624,000.00

Improvements Value\$1,300,000.00

Total Value\$16,924,000.00

Taxesno data

Last Sale Price\$0.00

Building DescriptionPARK / BLDGS

No. of Unitsno data

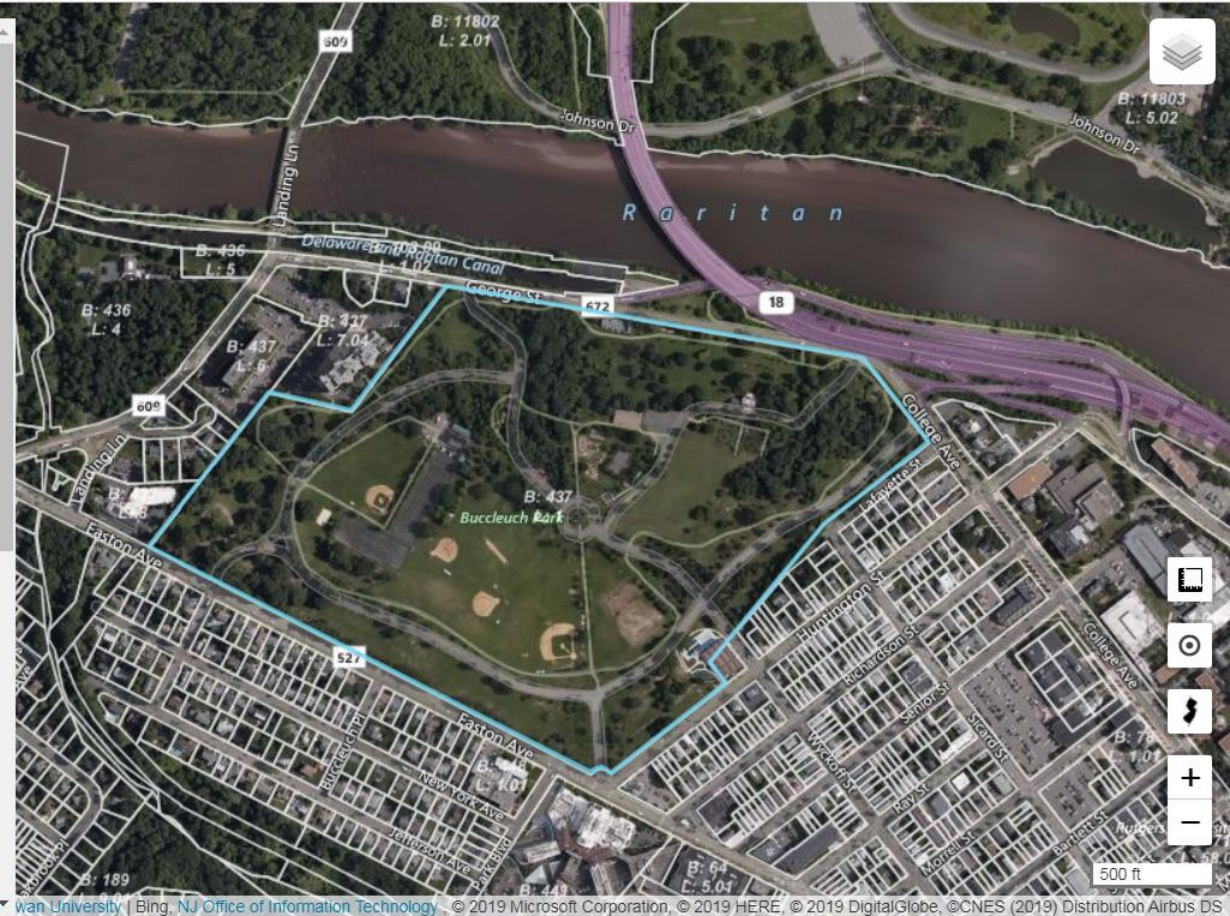
Building Classno data

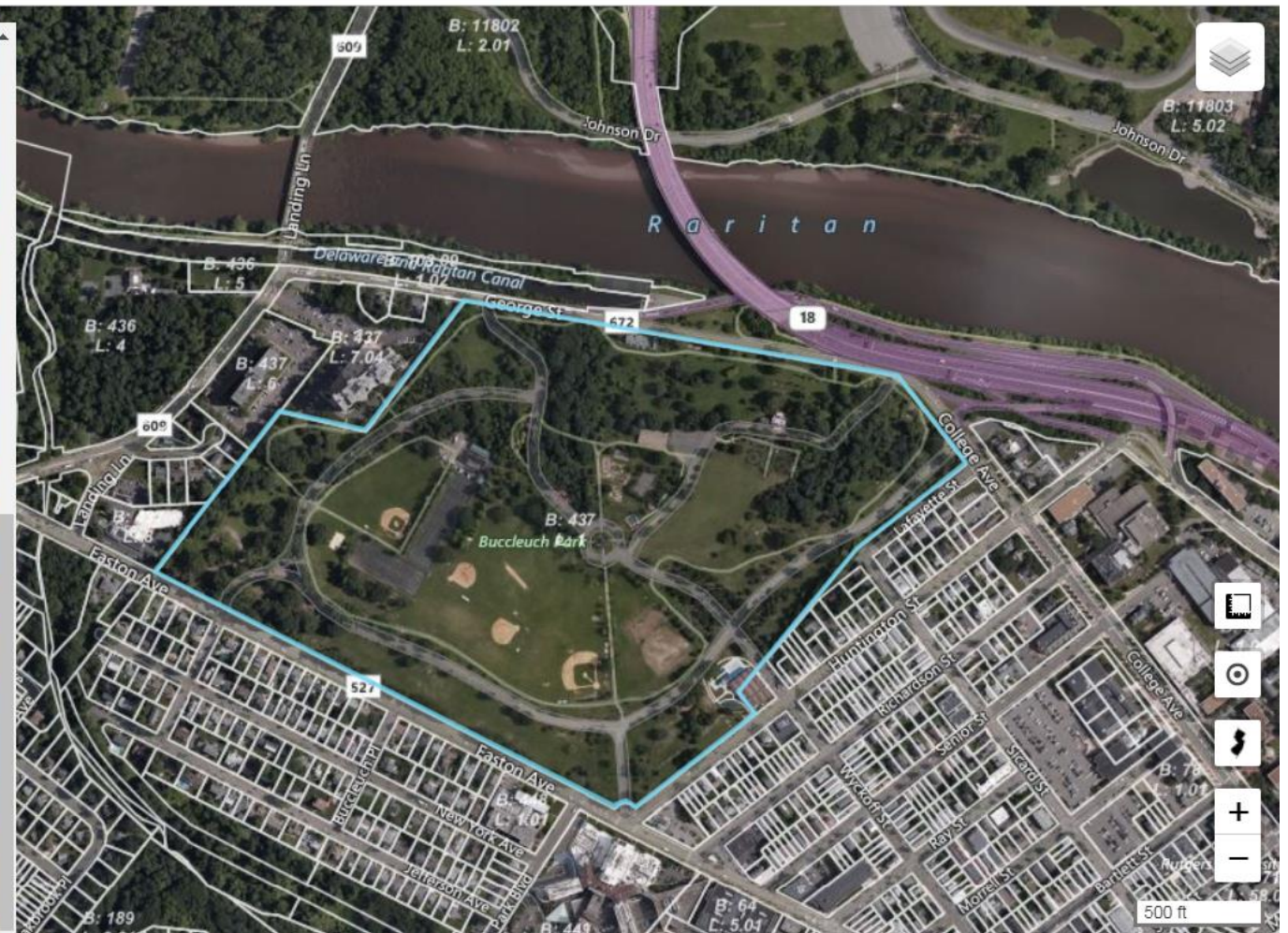
Year Built1900

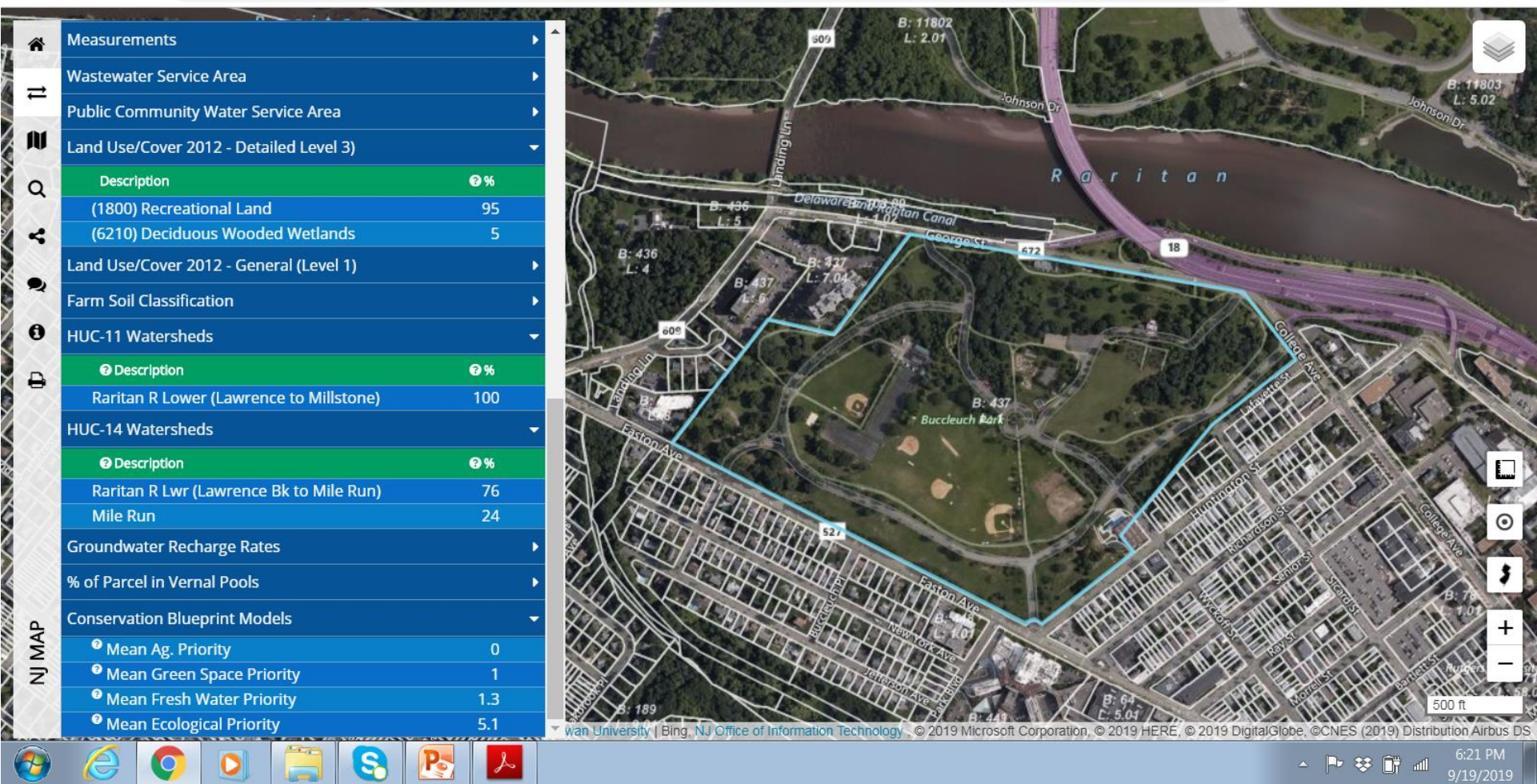
Land Description78.1200

Additional LotsNone

Deed Bookno data



NJ MAP





D&R CANAL STATE PARK

LEGEND

- Park Office
- Camping Area
- D & R Canal State Park Corridor
- Other State Park Land
- Canal Lock

0 1 2 3 4
Scale in Miles

Welcome to Delaware and Raritan Canal State Park

The New Jersey State Park Service hopes you will enjoy the many features of this area—including hiking, camping, fishing, boating and canoeing among others. For more information contact:

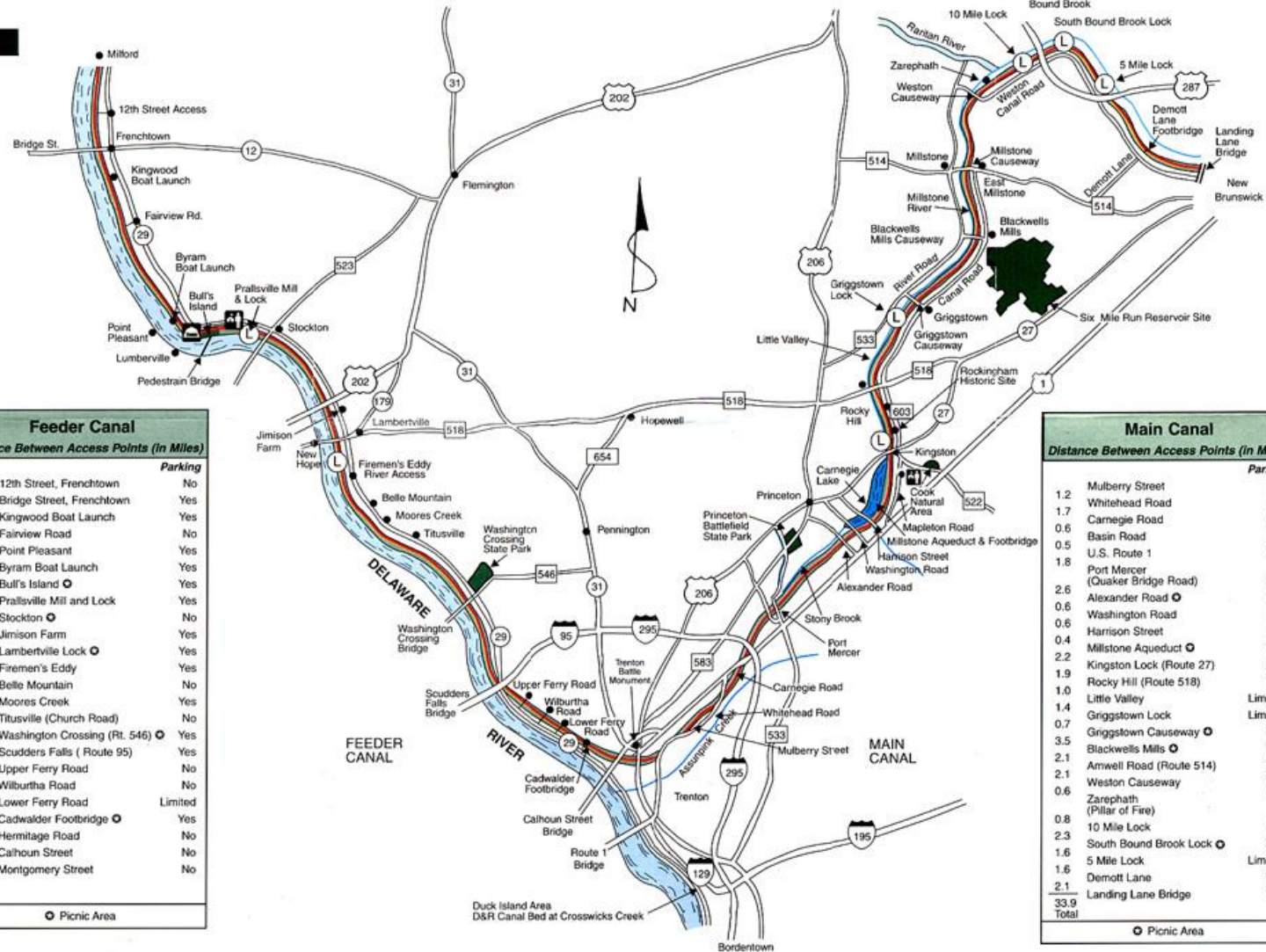
Park Office
D & R Canal State Park - Main Office
145 Mapleton Road
Princeton, NJ 08540
(609) 924-5705

Feeder Canal Office and Campground
Bull's Island Recreation Area
2185 Daniel Bray Highway
Stockton, NJ 08559
(609) 397-2949

Visit us on the web:
www.njparksandforest.org

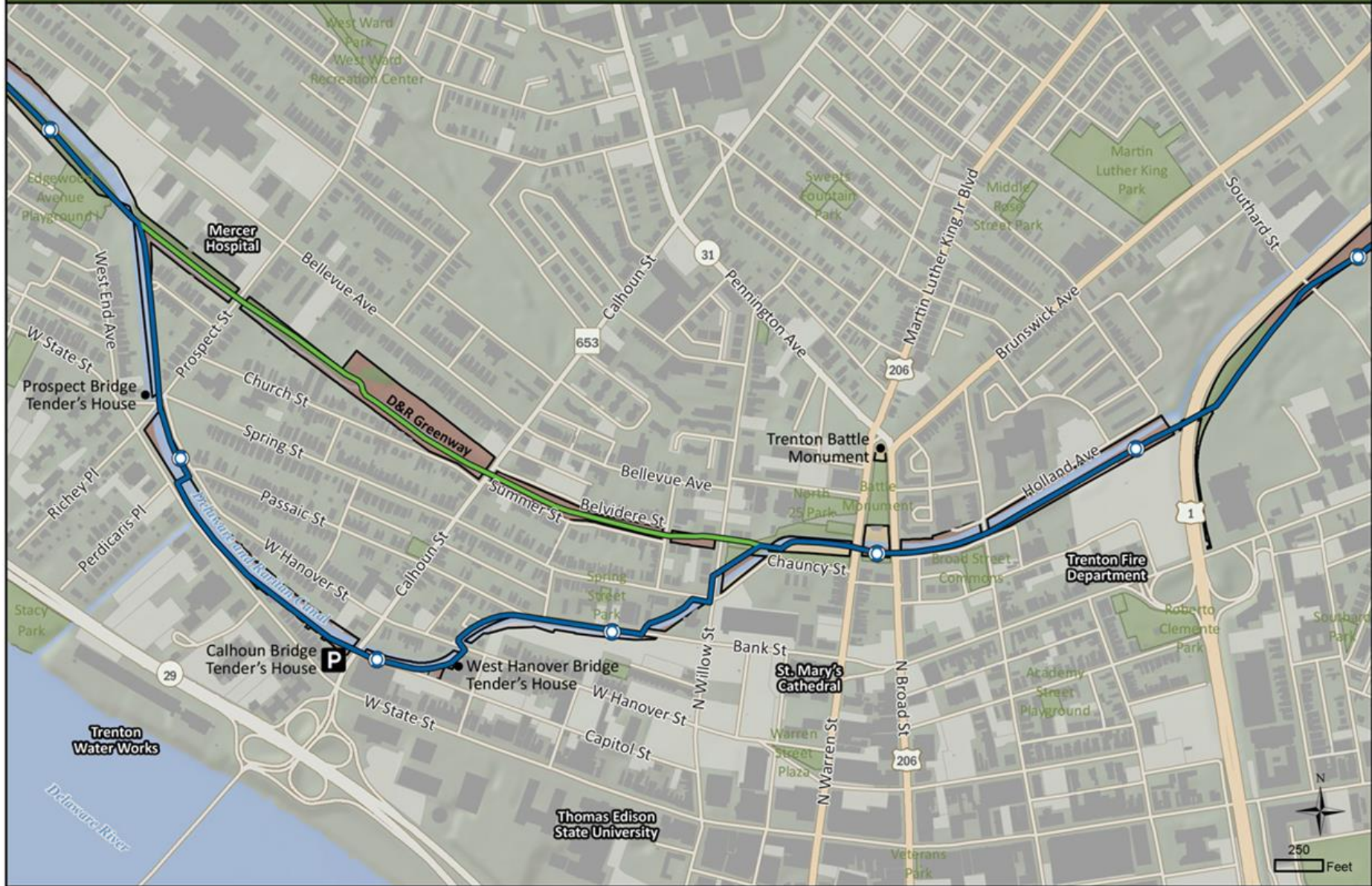
7/02

Feeder Canal		
Distance Between Access Points (in Miles)		
		Parking
0.7	12th Street, Frenchtown	No
0.9	Bridge Street, Frenchtown	Yes
0.9	Kingwood Boat Launch	Yes
1.4	Fairview Road	No
4.8	Point Pleasant	Yes
0.9	Byram Boat Launch	Yes
0.9	Bull's Island	Yes
3.0	Prallsville Mill and Lock	Yes
0.3	Stockton	No
2.4	Jimison Farm	Yes
1.5	Lambertville Lock	Yes
1.1	Firemen's Eddy	Yes
0.9	Belle Mountain	No
1.0	Moore's Creek	Yes
2.2	Titusville (Church Road)	No
1.2	Washington Crossing (Rt. 546)	Yes
2.4	Scudders Falls (Route 95)	Yes
0.8	Upper Ferry Road	No
3.4	Wilburtha Road	No
0.9	Lower Ferry Road	Limited
1.7	Cadwalder Footbridge	Yes
3.5	Hermitage Road	No
2.8	Calhoun Street	No
0.7	Montgomery Street	No
31.4	Total	
Picnic Area		



Main Canal		
Distance Between Access Points (in Miles)		
		Parking
1.2	Mulberry Street	No
1.7	Whitehead Road	No
0.6	Carnegie Road	Yes
0.5	Basin Road	No
1.8	U.S. Route 1	Yes
2.6	Port Mercer (Quaker Bridge Road)	Yes
0.6	Alexander Road	Yes
0.6	Washington Road	No
0.6	Harrison Street	No
0.4	Millstone Aqueduct	Yes
2.2	Kingston Lock (Route 27)	Yes
1.9	Rocky Hill (Route 518)	Yes
1.0	Little Valley	Limited
1.4	Griggstown Lock	Limited
0.7	Griggstown Causeway	Yes
3.5	Blackwells Mills	Yes
2.1	Amwell Road (Route 514)	Yes
2.1	Weston Causeway	Yes
0.6	Zarephath (Pillar of Fire)	No
0.8	10 Mile Lock	No
2.3	South Bound Brook Lock	Yes
1.6	5 Mile Lock	Limited
1.6	Demott Lane	Yes
2.1	Landing Lane Bridge	No
33.9	Total	
Picnic Area		

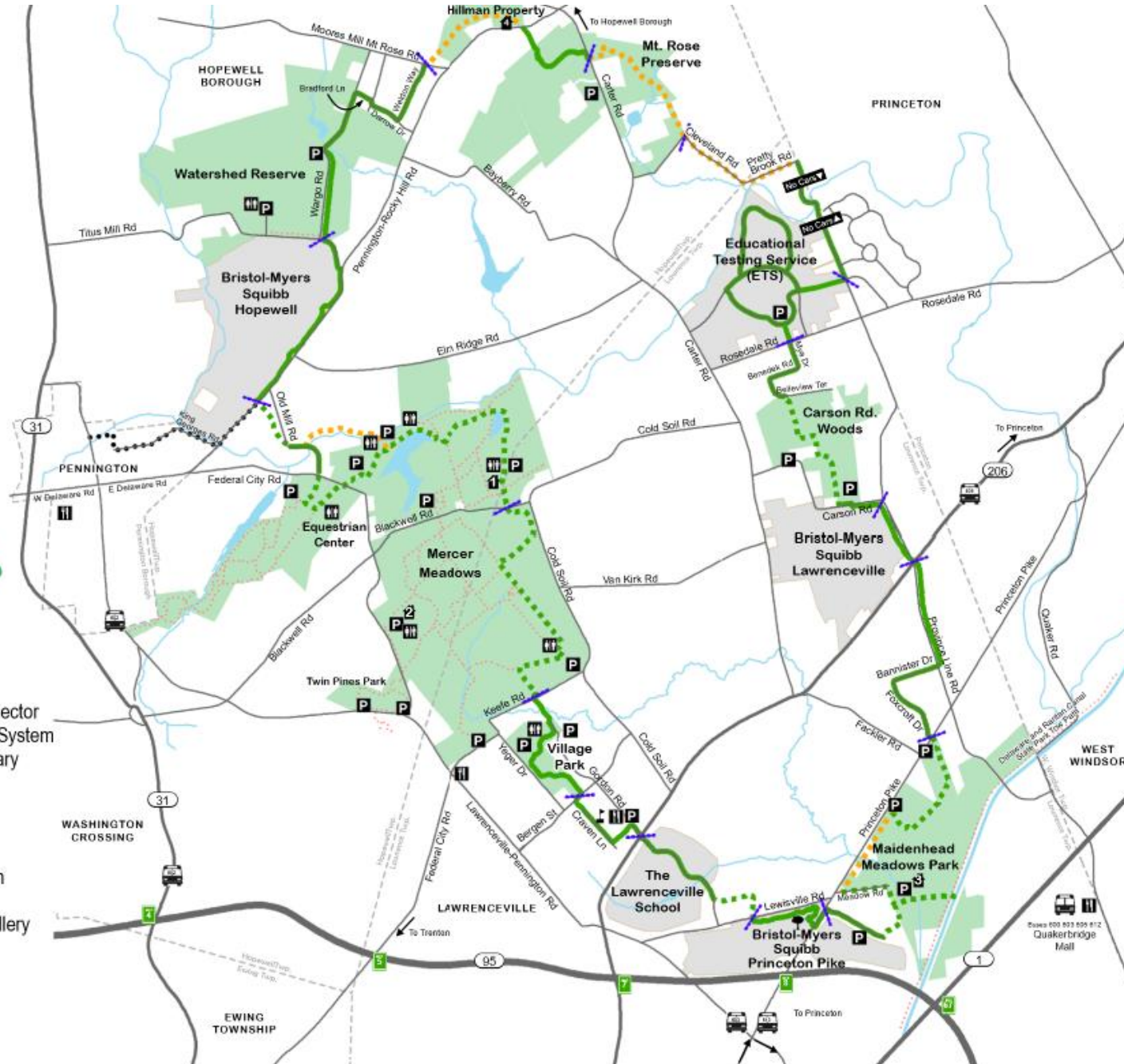
Feeder Canal Near the Trenton Battle Monument



Lawrence Hopewell Trail

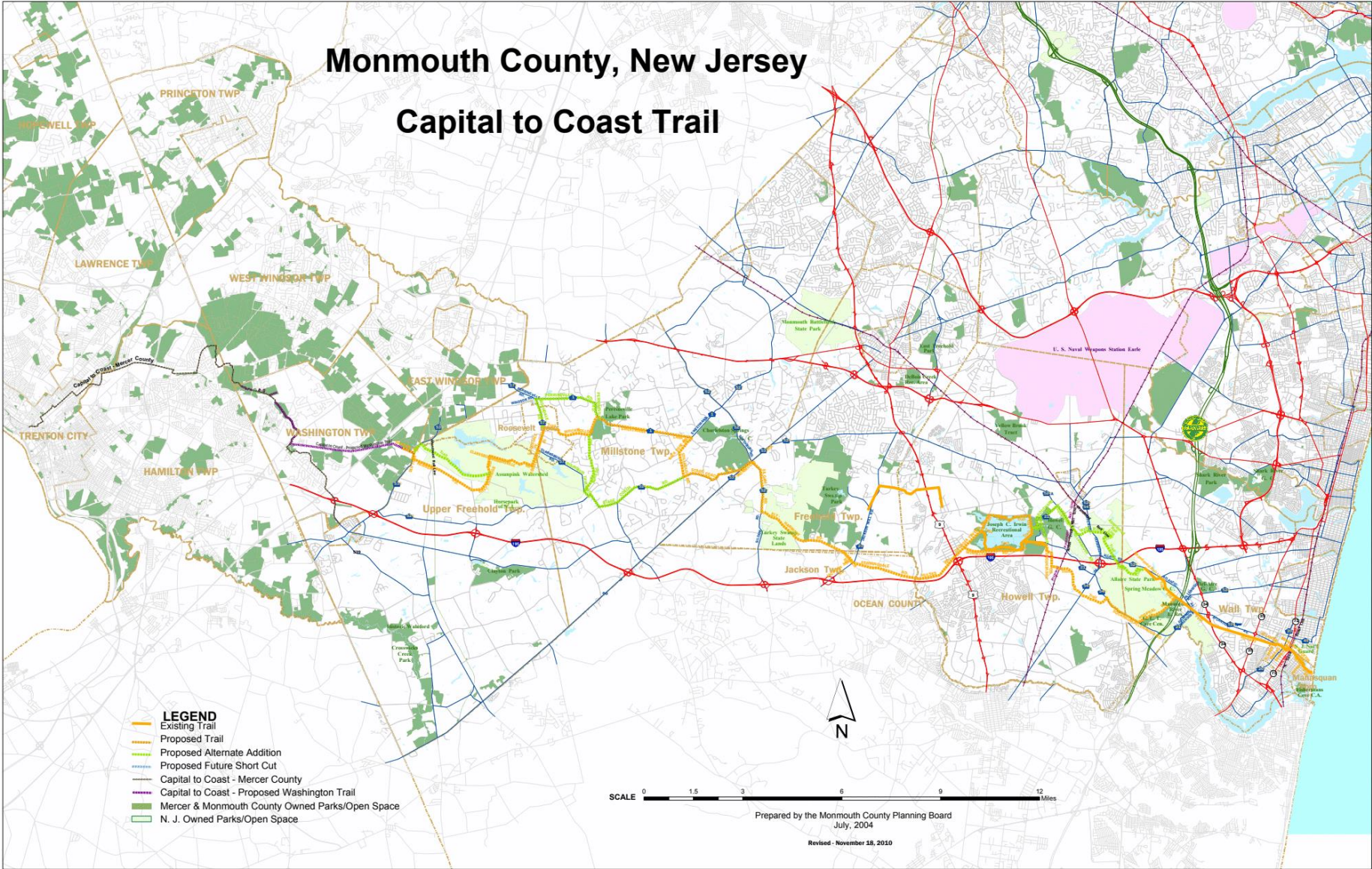


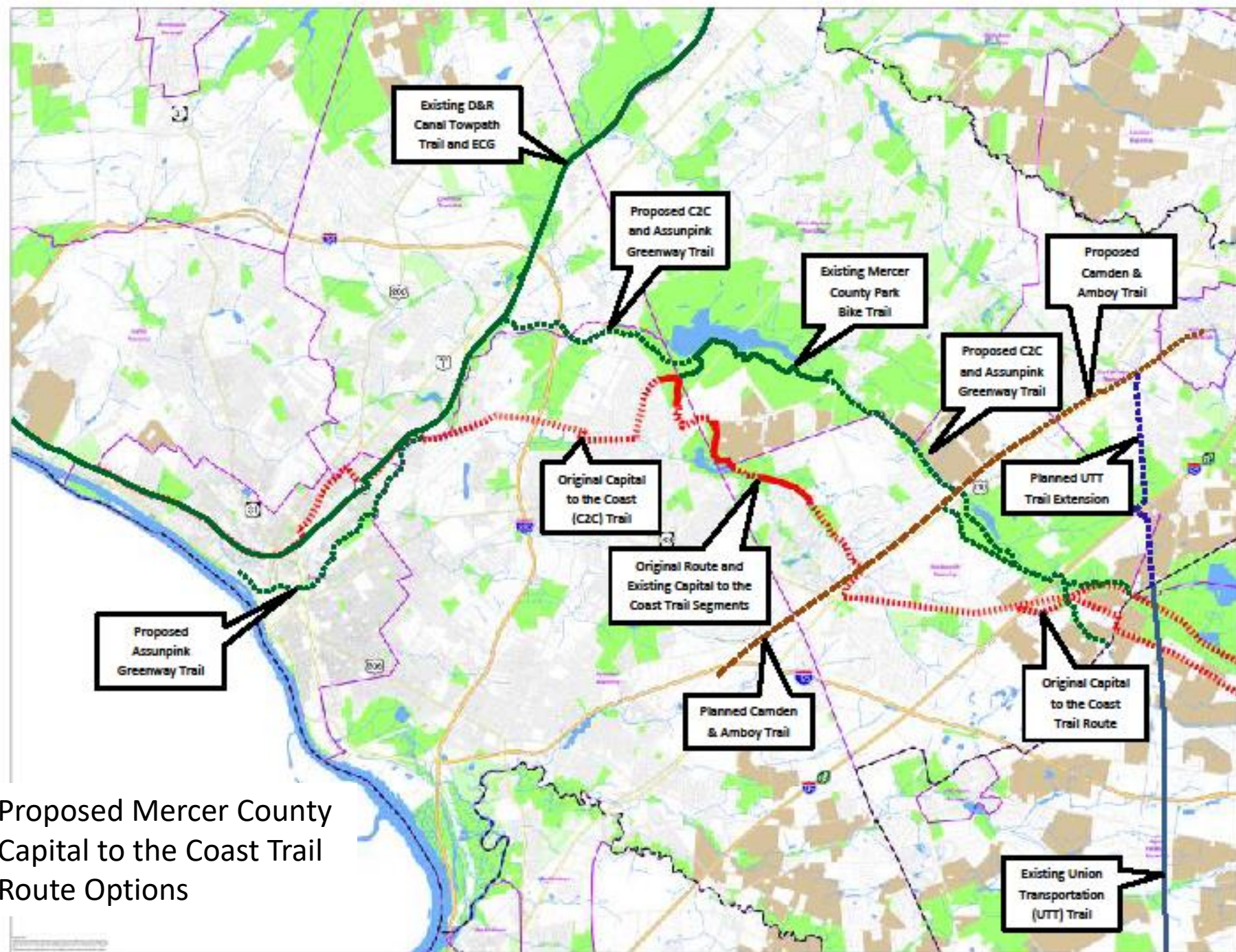
- Paved
- - - Stone Dust
- - - Future
- - - Pennington Connector
- - - Connecting Trail System
- - - Municipal Boundary
- - - LHT Segment
- P Parking
- R Restroom
- H Hunt House
- 2 Reed-Bryan Farm
- 3 Bearley House
- 4 Mount Rose Distillery
- S School
- B Bearley Oak
- F Food Service
- B Bus



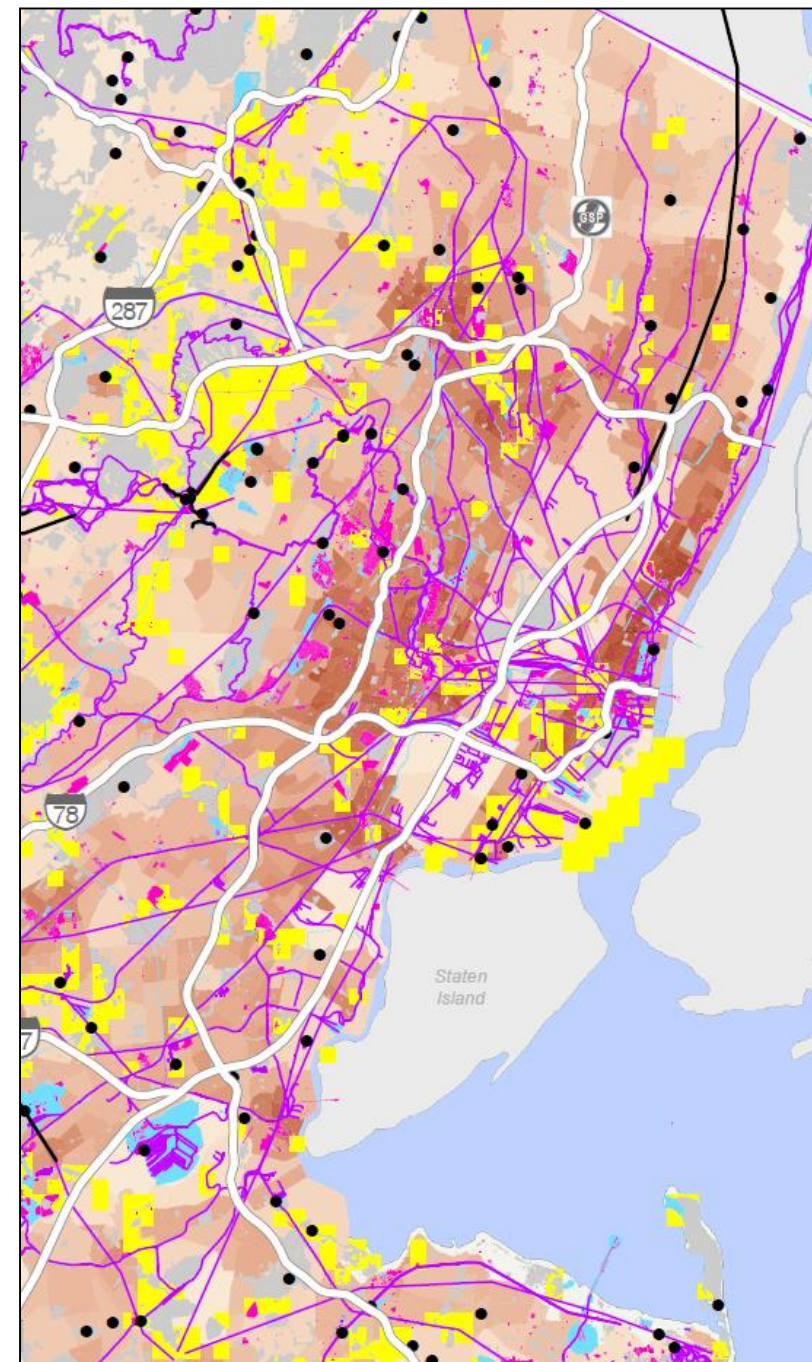
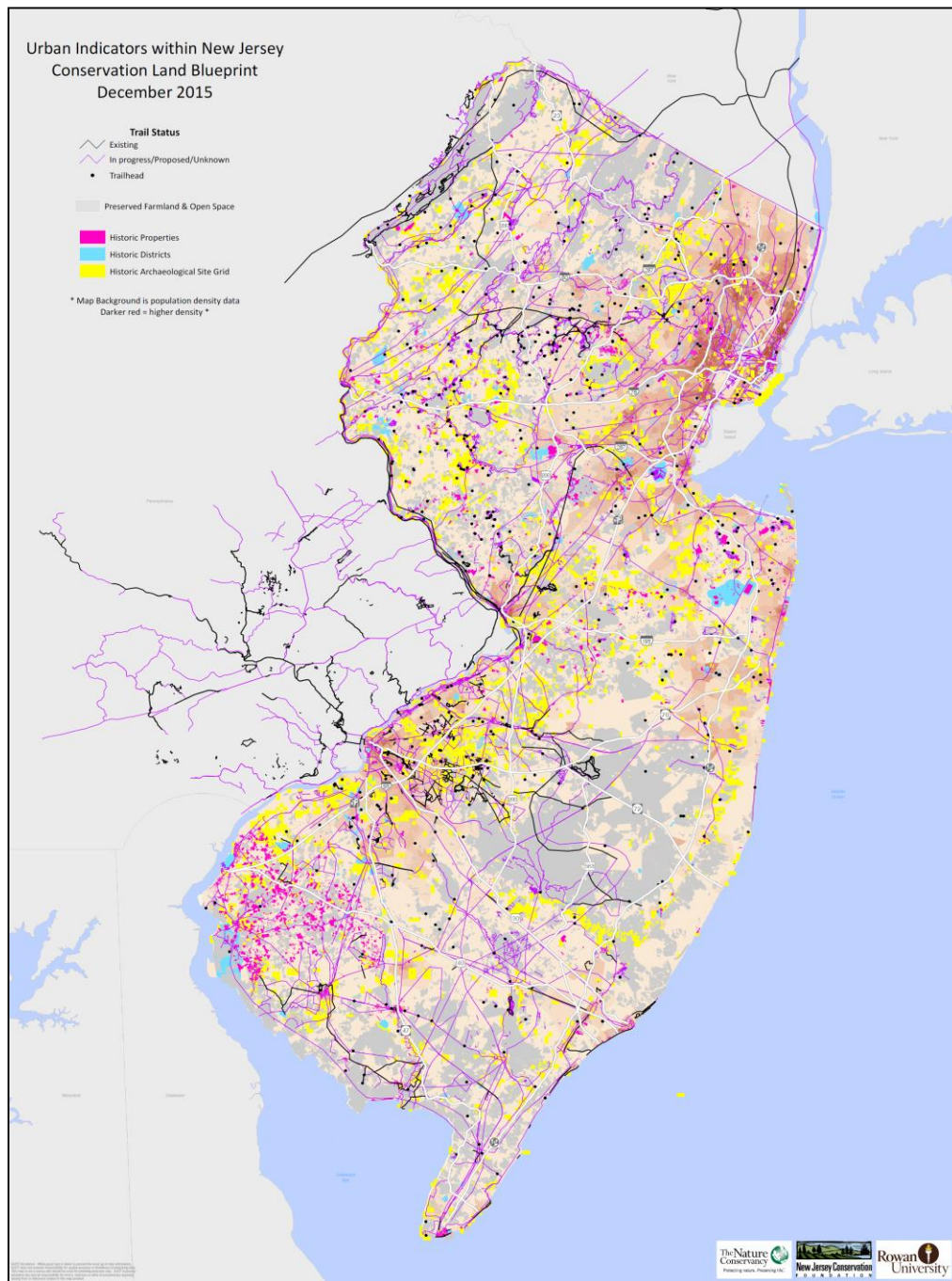
Monmouth County, New Jersey

Capital to Coast Trail

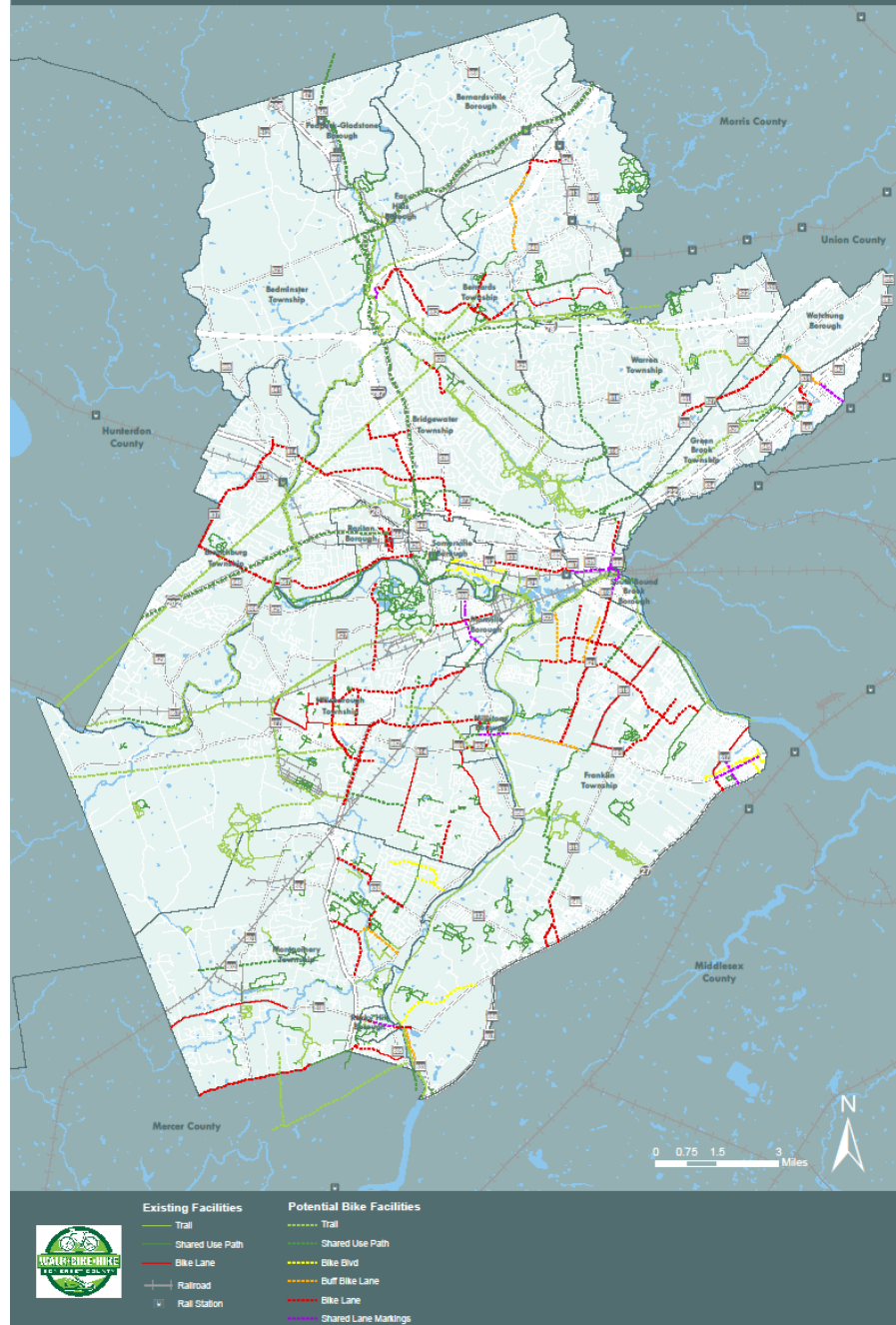




Proposed Mercer County
Capital to the Coast Trail
Route Options



Existing and Potential Network



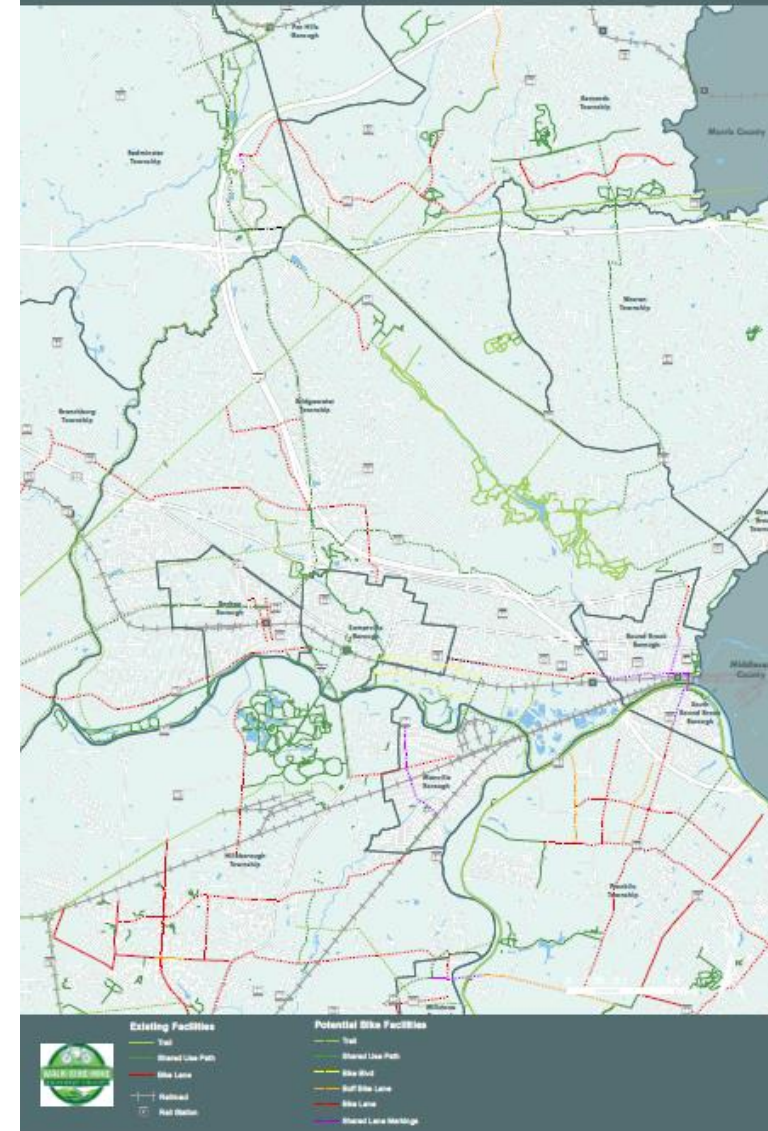
WalkBikeHike

Somerset County

CONNECTING VIBRANT COMMUNITIES



Bridgewater Township



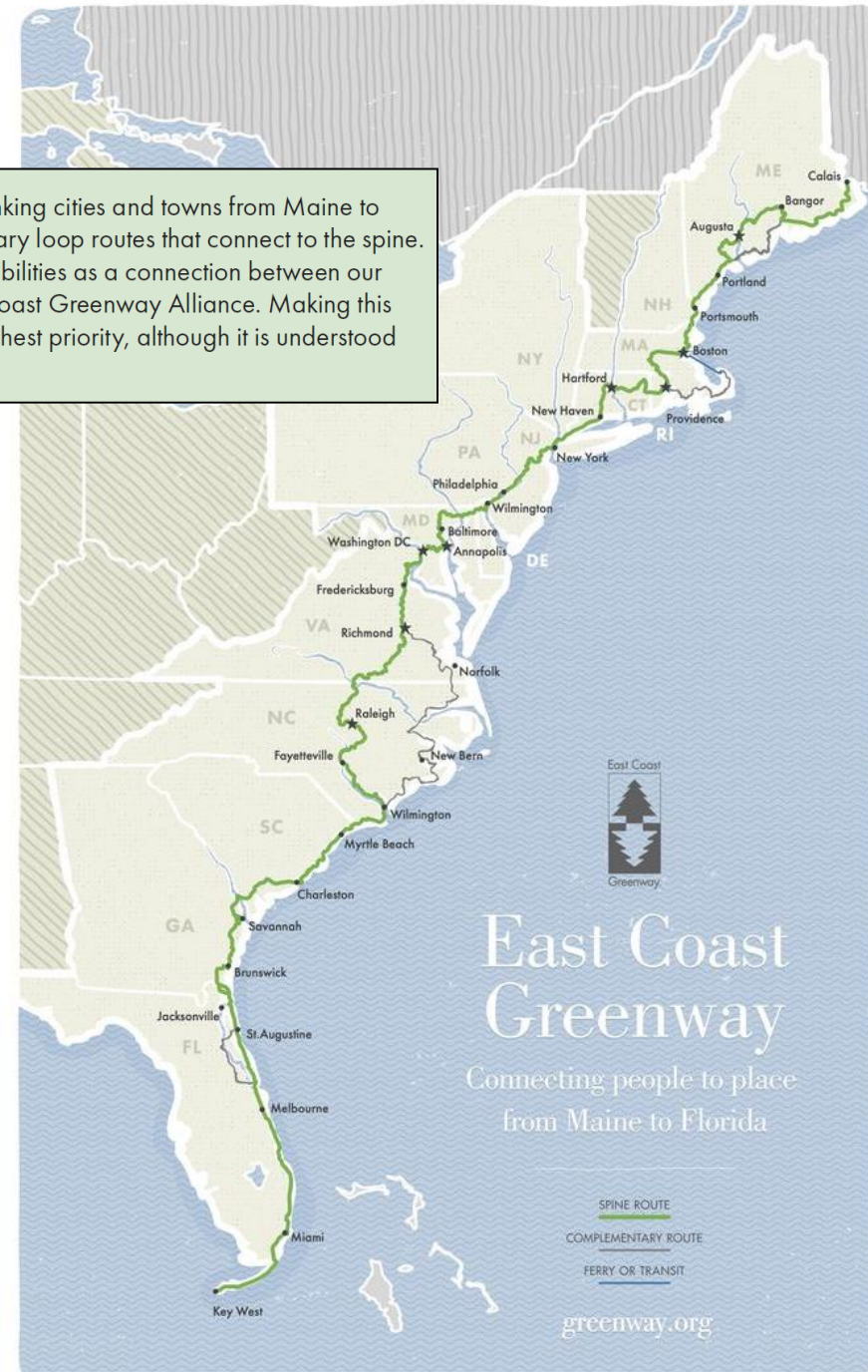


Greenway Criteria and Design Guide

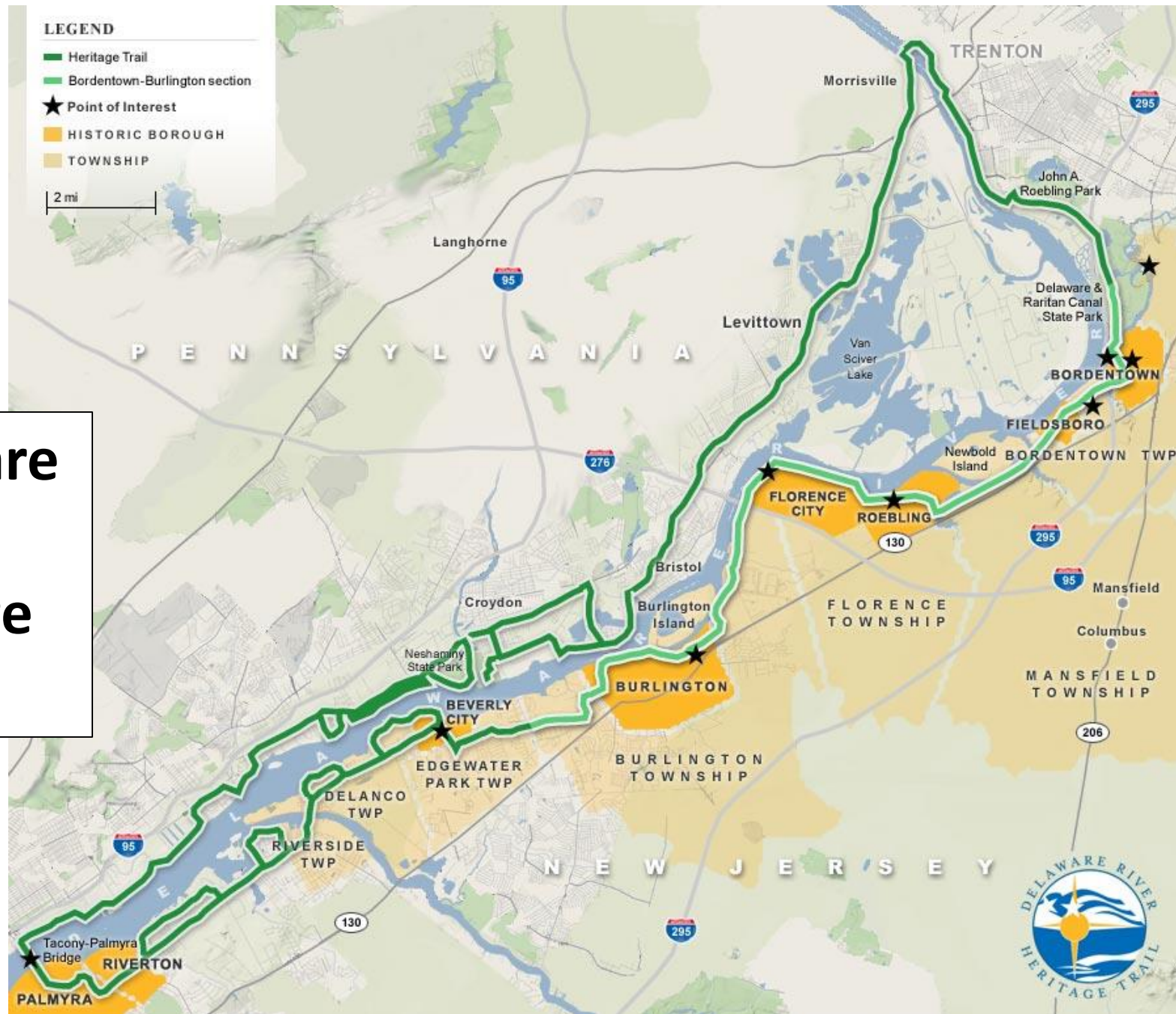


East Coast Greenway Route Vision

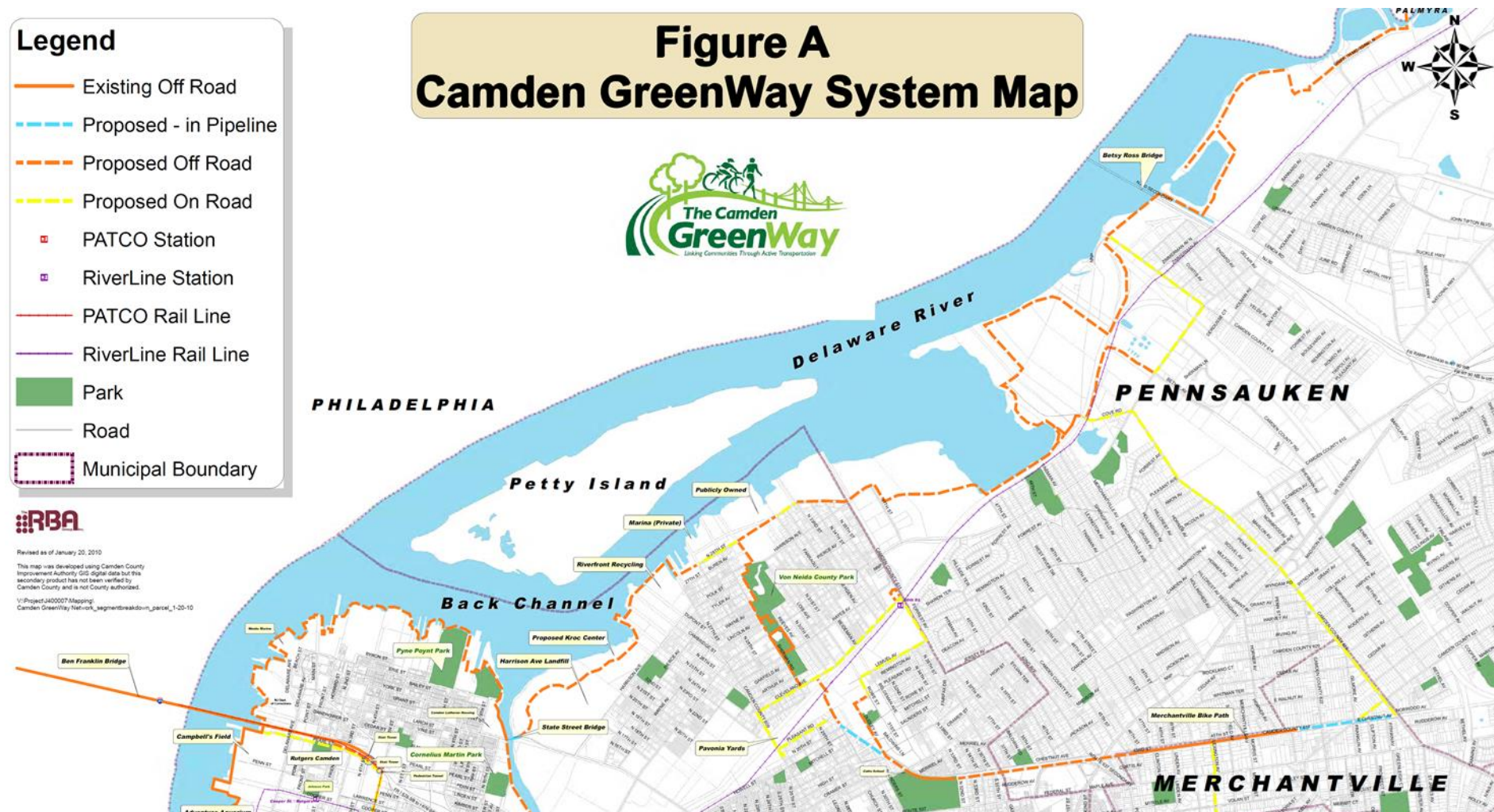
The East Coast Greenway is a north-south trail system linking cities and towns from Maine to Florida. It consists of a spine trail and eight complementary loop routes that connect to the spine. Establishing a safe, traffic-free pathway for users of all abilities as a connection between our eastern seaboard cities is the primary goal of the East Coast Greenway Alliance. Making this route off-road and protected from automobiles is the highest priority, although it is understood that this is a long-term goal.



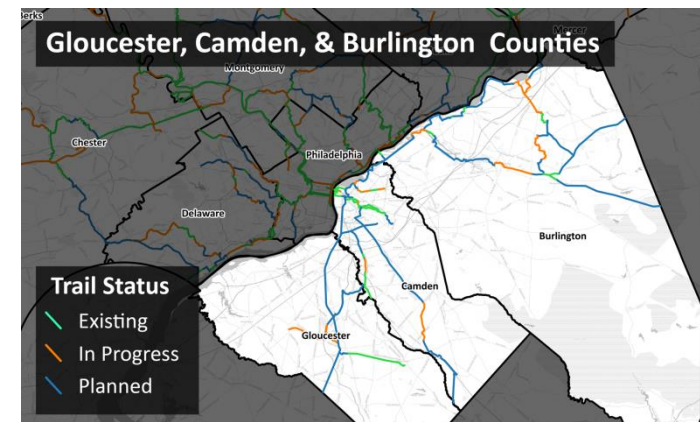
Delaware River Heritage Trail



DRHT Proposed Extension to Camden City



THE CIRCUIT TRAILS



EXPLORE!

<https://www.njmap2.com/>

conservationblueprint@gmail.com

Projects

Explore our suite of projects to gather data for research, create a map for advocacy or to learn more about your community.



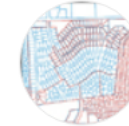
Conservation Blueprint

Created in partnership with The Nature Conservancy, New Jersey Conservation Foundation and a consortium of 21 conservation-focused groups both governmental and non-profits this series of maps showcase a shared, living blueprint of lands to be protected in the next few decades.



Land Change Viewer

A series of animated maps depicting three decades of land use change and environmental impacts in NJ.



Parcel Explorer

The Parcel Explorer tool allows users to easily find publicly available information about individual tax parcels in NJ.



Watershed Explorer

This interactive map features water resources in New Jersey in an effort to allow users to examine the important role plays in the culture, industry and history of our state.



Garbage in the Garden State

This map lets users interact with 20 years' worth of data about trash and recycling in New Jersey, collected from landfills and recycling centers and compiled by the NJ Dept. of Environmental Protection.



Municipal Buildout Modeler

This municipally-focused portal is focused on graphically depicting the correlation between nitrate pollution levels and municipal zoning scenarios, including current zoning ordinances and user provided alternative zoning.



Municipal Landuse Dashboard

Maps and data graphics that communicate statistics for each of NJ's 565 towns.

tim.brill@njconservation.org

609-947-8530