



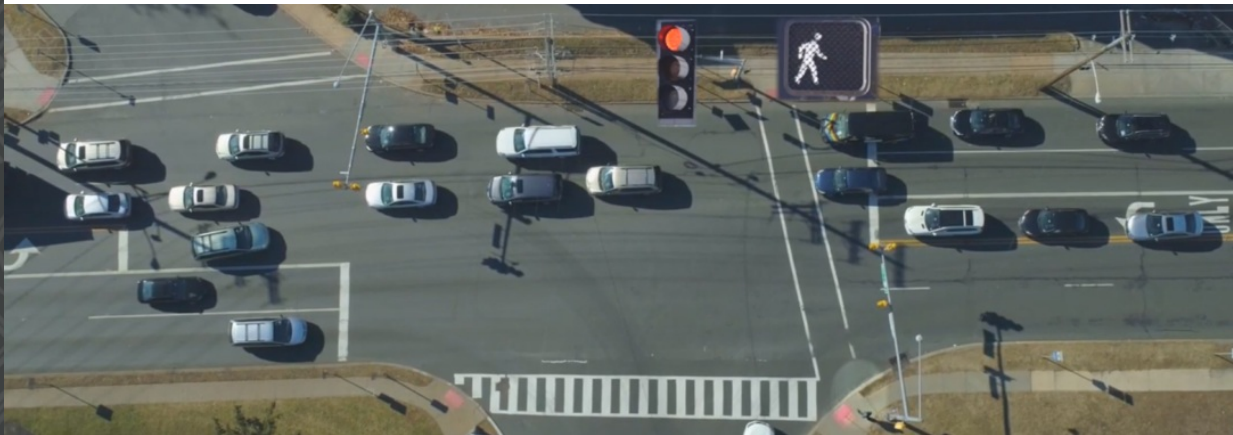
NJ BICYCLE & PEDESTRIAN RESOURCE CENTER

Educate. Encourage. Empower.

April 10, 2020 | Issue: 110

Dear Readers,

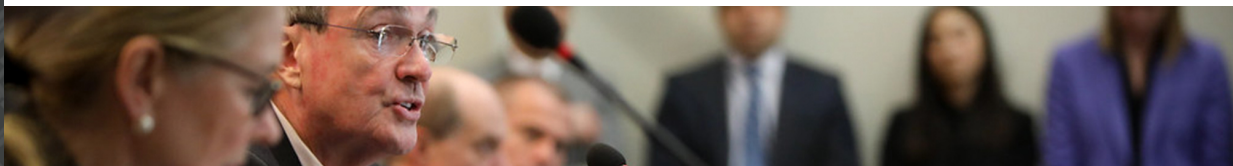
Welcome to this issue of the NJ Walks and Bikes Newsletter, a bi-weekly service prepared by the New Jersey Bicycle and Pedestrian Resource Center (NJBPRC). If you would like to learn more about NJBPRC, please visit us [here](#).



NJDOT Safety Countermeasures Training and Education Videos

New Jersey Department of Transportation (NJDOT) has published six videos on FHWA's Proven Safety Countermeasures that improve pedestrian safety.

[Read More Here](#)



Coronavirus Updates and Information

Governor Murphy Signs Executive Order Closing State and County Parks to Further Social Distancing

On April 7, 2020, Governor Phil Murphy announced **Executive Order 118**, closing all state parks and forests and county parks to further social distancing measures.

[Read More Here](#)

More Updates:

[Phil Murphy: Can't see overturning decision to close NJ state, county parks](#)

April 8, 2020

[Coronavirus: Was Murphy's decision to close all state and county parks overkill? | Bergmann](#)

April 8, 2020

NJ Bike/Ped News Feed March 31, 2020 - April 10, 2020



St. Paul, Minneapolis close streets for biking, walking through April 10

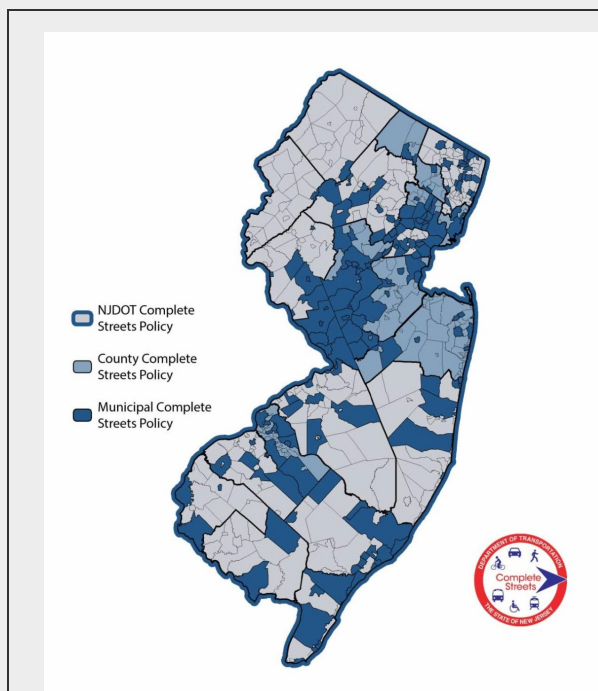


This NYC Bike Match Program matches unused bikes to those who need them



Pedestrian crossings automated to reduce touch points in downtown Chattanooga

[Click Here for More News](#)



Complete Streets in New Jersey

An up-to-date list of Complete Streets policies in New Jersey

There are currently **167** municipalities and **8** counties with Complete Streets policies in New Jersey.

This brings the total New Jersey population living in municipalities with Complete Streets policies to over 4 million people, or 46% of the population.

[Click Here for the Complete List of Policies](#)

To access the most up-to-date list of Complete Streets policies adopted in the state, click the button!

**Alan M. Voorhees
Transportation Center**

**NEW JERSEY
Safe Routes to School**



www.saferoutesnj.org



The State of New Jersey
**Department of
Transportation**



U.S. Department of Transportation
**Federal Highway
Administration**

RUTGERS

Edward J. Bloustein School
of Planning and Public Policy

[Visit Our Website](#)

