



NJ BICYCLE & PEDESTRIAN RESOURCE CENTER

Educate. Encourage. Empower.

April 22, 2022 | Issue: 137

Dear Readers,

Welcome to this issue of the NJ Walks and Bikes Newsletter, prepared by the New Jersey Bicycle and Pedestrian Resource Center (NJ BPRC) with support from the NJ Department of Transportation. If you would like to learn more about the NJ BPRC, please visit us [here](#).

NJ DRIVER ALERT: NEW SAFE PASSING LAW



New Jersey Safe Passing Law Information Available on our Website!

New Jersey's Safe Passing Law, which went into effect on March 1, 2022, provides clear rules of the road for all motorists when interacting with vulnerable road users, including people on foot, bicycle, scooter, or in a wheelchair. The new law aims to prevent the near misses, injuries, and deaths that can occur when motorists pass cyclists, pedestrians, or other vulnerable road users.

To learn more, visit our new [NJ Safe Passing Law webpage](#) where you can download a [slide presentation](#) and a [fact sheet](#) with information about the law.

[Click here to learn more!](#)

USDOT Safe Streets and Roads for All

The Bipartisan Infrastructure Law (BIL) establishes the new Safe Streets and Roads for All

(SS4A) discretionary program that will provide \$5-6 billion in grants over the next 5 years. Funding supports regional, local, and Tribal initiatives through grants to prevent roadway deaths and serious injuries. The SS4A program supports the US Department of Transportation's **National Roadway Safety Strategy** and a goal of zero deaths and serious injuries on our nation's roadways.

Eligible projects should advance a Comprehensive Safety Action Plan, including but not limited to:

- Implementing improvements along an expanded multimodal network of reconfigured roads with separated bicycle lanes and improved safety features for pedestrian crossings.
- Applying low-cost safety treatments such as rumble strips, wider edge lines, flashing beacons, and better signage along high-crash rural corridors.
- Conducting speed management projects such as implementing traffic calming road design changes and setting appropriate speed limits for all road users.
- Installing safety enhancements such as safer pedestrian crossings, sidewalks, and additional lighting for people walking, rolling, or using mobility assistive devices.
- Addressing alcohol-impaired driving along key corridors through education, outreach, and publicized sobriety checkpoints on weekends and holidays.
- Making street design changes informed by culturally competent education and community outreach.
- Creating safe routes to school and public transit services through multiple activities that lead to people safely walking, biking, and rolling in underserved communities.

A Notice of Funding Opportunity (NOFO) is anticipated to be released in the spring of 2022, likely in May. Award announcements are expected to be made by the end of 2022 or early 2023.

[Click here to learn more!](#)



Public Information Session will Outline Safety Improvements along Rosedale Road in Princeton

A public information session, outlining proposed pedestrian safety measures on Rosedale Road between Elm Road and Christopher Drive, has been set for April 19 at the Johnson Park School at 285 Rosedale Road in Princeton.

The presentation, which will run from 6-8 p.m., is being sponsored by Mercer County, which maintains Rosedale Road, and the Municipality of Princeton.

Residents may review the proposed improvements and offer feedback to officials.

The project's goal is to provide safe pedestrian and bicycle crossings across Rosedale Road and General Johnson Drive, which leads to the Johnson Park School, making it safer for students who walk or ride their bicycles to school.



Sustainable Jersey Announces New "Community Design for All Ages" Action

The new **Community Design for All Ages** action is now listed on the Sustainable Jersey website. This action provides guidance to a municipality to promote and implement community design for older adults. A municipality can complete a multi-component community initiative to develop an age-friendly implementation plan, or complete a range of stand-alone components to make the community more livable for people of all ages. Thanks to Tanya Rohrbach from NJ Future and Maryjude Haddock-Weiler from Highlands Council for creating the action!

A webinar to explain the action and how municipalities can advance age-friendly planning and implementation is being hosted by Sustainable Jersey on April 26th at noon.

Registration is free!

[Learn more about the action here.](#)

[Register for the webinar here.](#)



NJDEP Releases First-Ever Statewide Trail Map

The New Jersey Department of Environmental Protection (NJDEP), in partnership with the Trails Task Force of the New Jersey Geospatial Forum, announced the release of the first phase of a **statewide inventory of public trails** in New Jersey. This first-of-its-kind dataset, using information provided by government agencies and nonprofits, will advance the capabilities of NJDEP and other government agencies, trail planners, and advocates to improve, expand and better connect the state's extensive network of trails, improving access for all of New Jersey's residents.

Interested in learning more about the statewide trail database and how it was created? Check out this recording of the **"Blazing a New Path" webinar** hosted by the New Jersey Trails Action Network!

[Click here to read the](#)

[Click here to view the](#)

[Click here to watch](#)



Walkability and Redlining: How Built Environments Impact Health and Perpetuate Disparities

Built environments can shape how active an individual is, while policy decisions made decades ago impact health disparities today. To address these critical social determinants of health, experts are calling for increased cooperation between urban planners and the public health field. To learn more, [read the full article](#) in the American Journal of Managed Care, which includes an interview with the NJ Bicycle and Pedestrian Resource Center's Managing Director, Leigh Ann Von Hagen.

[Read the full article here!](#)

GMTMA Mobility Minute Episode 7: How Do We Start Making Our Streets Safer for All People? with Leigh Ann Von Hagen

In episode 7 of the Greater Mercer TMA's Mobility Minute podcast, the NJ Bicycle and Pedestrian Resource Center's Leigh Ann Von Hagen discusses sustainability, environmental justice, and improving New Jersey transportation systems to be safer and more accessible for all people. The interview addresses how to advocate for change and where to find the resources needed to challenge status quo.



[Click here to listen to the full episode!](#)



“Complete Streets” and Goods Delivery: What Is a Street For?

The changing nature of shopping means people are more likely to have things delivered to them than go to a store to buy them. At the same time, people increasingly want to live in mixed-use neighborhoods where they can walk to local destinations. How should we be thinking about the safety of pedestrians and other non-motorized travelers in an era of increasing truck traffic? What is the difference between a street and a road? This [blog article](#) from New Jersey Future explores these questions and more!

[Click here to read the full article!](#)

FHWA Announces New Guidance, Increased Funding for Infrastructure Program that Helps States and Communities Create Safer, More Walkable Streets

In enacting the Bipartisan Infrastructure Law (BIL), Congress nearly doubled funding of the TA Set-Aside from \$850 million annually for fiscal years 2018 through 2020 to an average annual amount of \$1.44 billion from 2022 through 2026. This presents opportunities to fund many smaller-scale but critically important multimodal transportation projects at both the State and local level.

More information about FHWA’s Transportation Alternatives Set-Aside Guidance can be found on [FHWA’s website](#) and [fact sheet](#).

[Click here to read the full press release.](#)

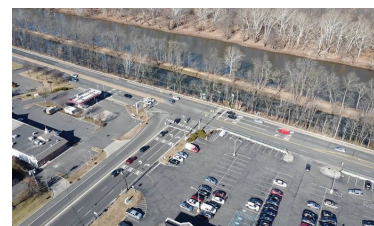
Bike/Ped News Feed



Lawrence Township Gets Grant for Pedestrian Improvements on Craven Lane



Representative Malinowski Delivers \$1.4 Million to Improve Access to Downtown Bernardsville



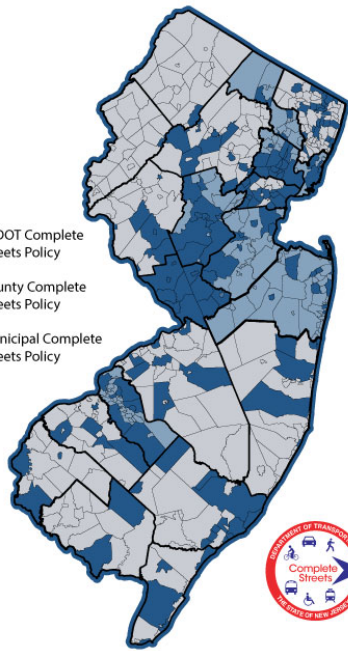
Easton Avenue: Addressing the Roadway’s Dangerous History

Middlesex County Vision Zero Initiative Announced during State of the County Address

Complete Streets in New Jersey

An up-to-date list of Complete Streets policies in New Jersey

-  NJDOT Complete Streets Policy
-  County Complete Streets Policy
-  Municipal Complete Streets Policy



There are currently **173** municipalities and **8** counties with Complete Streets policies in New Jersey.

This brings the total New Jersey population living in municipalities with Complete Streets policies to over 4 million people, or 46% of the population.

To access the most up-to-date list of Complete Streets policies adopted in the state, click the button!

[Click Here for the Complete List of Policies](#)

**Alan M. Voorhees
Transportation Center**



[Visit Our Website](#)

