



#NJBikePed

**New Jersey Department of Transportation &
Alan M. Voorhees Transportation Center**

Present the

2013 New Jersey

COMPLETE STREETS

Summit | Rutgers University



New Brunswick, NJ



About Summit Facilitators

New Jersey Department of Transportation

<http://www.state.nj.us/transportation>

The New Jersey Department of Transportation (NJDOT) Complete Streets policy, internally adopted in 2009, requires that roadway improvement projects include safe accommodations for all users, including bicyclists, pedestrians, transit riders and the mobility-impaired. This policy is implemented through the planning, design, construction, maintenance and operation of new or rehabilitated transportation facilities within public rights-of-way that are federally or state funded, including projects processed or administered by the Department. Through public workshops, NJDOT has expanded public awareness and interest in the Complete Streets initiative and provided municipal and county decision makers with a better understanding of Complete Streets, the policy and design issues, implementation, and how to create a safer environment for all roadway users in all communities.

New Jersey Bicycle and Pedestrian Resource Center

<http://njbikeped.org>

The New Jersey Bicycle and Pedestrian Resource Center (NJBPRC) assists public officials, transportation and health professionals, and the public in creating a safer and more accessible walking and bicycling environment through primary research, education, and dissemination of information about best practices in policy and design. The Center is supported by NJDOT through funds provided by the Federal Highway Administration. The NJBPRC is managed by the VTC's Pedestrian and Bicycle Practice Group. The Center's mission is "to motivate, educate and empower citizens to create safer and more accessible walking and bicycling environments through cutting edge research, education, and sharing of resources."

Alan M. Voorhees Transportation Center

<http://policy.rutgers.edu/vtc>

The Alan M. Voorhees Transportation Center (VTC) is a national leader in the research and development of innovative transportation policy. Located within the Edward J. Bloustein School of Planning and Public Policy at Rutgers, the Center brings to bear the full array of resources of a major research university on transportation issues of regional and national significance. By virtue of its New Jersey location, the Voorhees Transportation Center is well suited to address many of the critical transportation issues confronting the nation. The Center's research and applied projects focus on transportation and the built environment, transportation and social equity, transportation finance and the economy, transportation security and evacuation planning, and the role of transportation systems and travel behavior in energy consumption, air pollution and global warming.

Summit Overview



2013 New Jersey Complete Streets Summit

Welcome

The New Jersey Complete Streets Summit brings together planners, engineers, and policy-makers from throughout the state to advance strategies for providing a safe, multi-modal transportation system that is accessible to all users. New Jersey is a state with a wide range of geographic contexts. Throughout the state, one finds rural communities, sprawling subdivisions, compact pre-war suburbs, and dense urban cores. While Complete Streets may look different in each of these contexts, the transportation system in each of our communities must accommodate transit-riders, pedestrians, and cyclists as well as motorists. Our roads must be safe for children, the elderly, and the disabled as well as able-bodied adults. The Complete Streets movement is fundamentally about institutionalizing these principles in policies that impact each roadway project throughout the State. The New Jersey Department of Transportation continues to operate under its nationally recognized policy. In addition, the number of Complete Streets policies in New Jersey has swelled in recent years. Currently, seventy municipalities and five counties have adopted local Complete Streets policies.

This conference serves several purposes. It will both benchmark and celebrate efforts by New Jersey's state and local governments to improve the safety and attractiveness of our public roads for all users of all abilities. In addition, the Summit will provide a wealth of information about design principles and financing mechanisms to help communities move from adopting Complete Streets policies to implementing Complete Streets projects. Finally, this Summit will highlight the economic, public health, and mobility benefits of Complete Streets. Implementing a Complete Streets program can be difficult, and understanding these benefits will equip planners, engineers, and policy-makers to better advance the case for Complete Streets in their communities.



DAY AT A GLANCE

- 8:30 AM Welcome & Opening Remarks
- 9:00 AM Opening Keynote
- 10:00 AM Contextualizing Complete Streets
- 11:10 AM Networking Break
- 11:25 AM Rightsizing Streets
- 12:25 PM Networking Lunch & Recognition Ceremony
- 1:40 PM Complete Streets Implementation
- 2:40 PM Networking Break
- 2:55 PM Making the Case for Complete Streets
- 3:55 PM Closing Remarks
- 4:00 PM Reception

2013 Complete Streets Award Winners

Complete Streets Excellence Award

The City of Hoboken
The City of Newark

The City of Lambertville
The City of North Wildwood

The Township of Montclair

Complete Streets Champion Award

Rebecca Hoeffler

The Trenton Green Team

Complete Streets Policy Recognition

Atlantic City
Camden City
Cranford Township
East Orange City
Fort Lee Borough
Glen Ridge Borough
Hackettstown Town
Hoboken City
Irvington Township
Lambertville City
Mantua Township
Maywood Borough
Montclair Township
Morristown Town
New Providence Borough
North Wildwood City
Plainsboro Township
Point Pleasant Beach Borough
Raritan Township
River Edge Borough
South Orange Village
Vineland City
Wildwood City
Woodbury City
Hudson County
Monmouth County

Bloomfield Township
Cape May City
Denville Township
Emerson Borough
Freehold Borough
Gloucester Township
Harvey Cedars Borough
Hopatcong Borough
Jersey City
Lawrence Township
Maplewood Township
Medford Township
Montgomery Township
Netcong Borough
Newark City
Ocean City
Pleasantville City
Princeton
Red Bank Borough
Roselle Borough
Toms River Township
West Orange Township
Woodbine Borough
Woolwich Township
Middlesex County

Califon Borough
Chatham Borough
Dover Town
Fair Haven Borough
Frenchtown Borough
Hackensack City
Highland Park Borough
Hopewell Borough
Lacey Township
Linwood City
Margate City
Middle Township
Montvale Borough
New Brunswick City
North Wildwood City
Orange Township
Point Pleasant Borough
Raritan Borough
Ridgewood Village
Rutherford Borough
Trenton City
West Orange Township
Woodbridge Township
Essex County
Mercer County

Summit Agenda



2013 New Jersey Complete Streets Summit

8:30 AM Welcoming and Opening Remarks

Emcee: Andrew Kay
Moderator: Charles Brown
Moderator: Sheree Davis
Speaker: NJDOT Commissioner James Simpson

9:00 AM Opening Keynote - Making the Case for Complete Streets

Moderator: Heather Martin
Speaker: Charles Marohn, Jr., PE/AICP - Co-founder and President of Strong Towns

10:00 AM Contextualizing Complete Streets

There is no one-size-fits-all approach to implementing Complete Streets. Complete Streets policies and implementation should be tailored to fit the specific needs of each municipality or county. View a recent video of the complete streets movement in New Jersey and hear how three experts are approaching complete streets policy adoption and implementation in three different contexts: Morris (Chatham Borough), Sussex, and Passaic Counties.

Moderator: Ranjit Walia
Speaker 1: Susan Blickstein
Speaker 2: Eric Snyder
Speaker 3: Michael Lysicatos

11:10 AM Networking Break

11:25 AM Rightsizing Streets

'Rightsizing' refers to reconfiguring a street so that it better serves all users, not just motorists. This session will utilize recent case studies and projects to discuss the design and engineering principles behind rightsizing streets as well as address the common misconceptions associated with road lane widths and levels of service.

Moderator: Jerry Fried
Speaker 1: Gary Toth
Speaker 2: Kimberli Craft, PE





Summit Agenda

12:25 PM Networking Lunch and Recognition Ceremony

Lunch will feature a recognition ceremony for all municipalities and counties that have adopted Complete Streets policies and special recognition to five municipalities that have demonstrated excellence in implementing Complete Streets projects.

County/Municipality Policy Recognition
Complete Streets Champion Awards
Complete Streets Excellence Awards

1:40 PM Complete Streets Implementation

So you have a Complete Streets policy in your community. Now what? Speakers will address concerns over liabilities as well as funding at the state and MPO level.

Moderator: Debbie Kingsland
Speaker 1: Sheree Davis
Speaker 2: Janine Bauer

2:40 PM Networking Break

2:55 AM Making the Case for Complete Streets

Complete Streets make communities more sustainable, vibrant and attractive for people of all ages and abilities, by delivering a wealth of benefits at the micro and macro level. Hear from these experts as they discuss health trends and impacts, economic benefits and competitiveness, aging in place and senior mobility, and safe routes to school.

Moderator: Janet Heroux
Speaker 1: Charles Brown
Speaker 2: Karen Alexander
Speaker 3: Elise Bremer-Nei

3:55 PM Closing Remarks

Alan M. Voorhees Transportation Center
New Jersey Department of Transportation

4:00 PM Reception



Moderators & Speakers

Karen Alexander



As Managing Director of New Jersey Travel Independence Program at Rutgers, Karen Alexander leads a team of professionals dedicated to increasing mobility for seniors and people with disabilities across New Jersey. Her prior positions at the Wilf Campus for Senior Living and at the Jewish Federation of Greater MetroWest, focused on helping older adults live longer in their own communities. Major projects included *LIVE–Lifelong Involvement for Vital Elders*, an aging-in-place program that reached over 1,800 seniors monthly in three NJ towns; *On The Go!* senior mobility workshops with transit field trips and pedestrian outings, and a recent study for the Partners for Health Foundation entitled, “*How Can We Help Older Residents of Montclair Age in Place?*” Prior to moving to New Jersey, her career focused on senior mobility and accessible transportation, with positions at NJ TRANSIT, NYC Transit, Urbitran and Access-A-Ride. Ms. Alexander is certified as an Assisted Living Administrator by the State of New Jersey and holds a Post-Graduate Certificate in Aging from Hunter College. She earned her Master of Public Administration from Columbia University, and a Bachelor of Arts in Communications from UCLA.

.....

Janine Bauer



From 1993-2003, Ms. Bauer was the director of the non-profit Tri-State Transportation Campaign. Tri-State works with state legislators, citizens, and agencies in New Jersey, New York, Connecticut and southeastern Pennsylvania to achieve greater investment in infrastructure projects to build a more efficient transportation network. Tri-State publishes the weekly bulletin, *Mobilizing the Region*, which won two awards from the American Planning Association during her tenure. Ms. Bauer was voted “Young Lawyer of the Year” by the New Jersey Bar Association in 1990, while in her first stint in private practice, at Szaferman, Lakind in Lawrenceville, NJ, where she is now a partner, practicing civil litigation focused on transportation, environmental and land use law. Ms. Bauer received her J.D. with honors from Rutgers University School of Law in 1984, where she served as a law review editor. She was a law clerk for the New Jersey Supreme Court (Justice Alan B. Handler) in 1984-85. Ms. Bauer has been a contract researcher for the NJDOT on several projects related to pedestrian and bicyclist safety, including a revision of the state motor vehicle code to make New Jersey’s driving environment safer, and working with the law enforcement community in that effort. Ms. Bauer was the vice-chair of the South Orange planning board from 2000 to 2006, and served on the governing body from 2009 until May 2013. She chairs a committee that is revitalizing the east branch of the Rahway River and building a bicycle path along its edge. She has raised over \$1.2 million for the project.



Moderators & Speakers

Susan Blickstein



Susan G. Blickstein, AICP/PP, Ph.D. has twenty-five years of experience in community planning in New Jersey, with particular expertise in land use and bicycle/pedestrian policy and planning for municipalities, counties, and state agencies. Ms. Blickstein serves as consulting planner to several NJ communities, providing master planning, redevelopment, creative zoning, and plan review services. Ms. Blickstein also has extensive experience in the area of transportation planning, having prepared local circulation plans, bicycle and pedestrian master plans, complete streets policies and plans, and traffic calming studies. Susan especially enjoys leading public outreach processes and facilitating stakeholder input for complex projects. In addition, she has experience developing strategic plans and policy documents to assist state agencies with implementation of Safe Routes to School, school wellness and traffic calming policies. A graduate of Rutgers' MCRP program in its pre-Bloustein days, Ms. Blickstein went on to earn a doctorate in Geography at Clark University where her dissertation and subsequent publications address the role of bicycle activism in re-envisioning cities and the public realm. Ms. Blickstein is an Adjunct Professor/Research Scholar at Vassar College's Department of Geography and a principal in her own consulting firm. When she is not working, you can usually find Susan on her bicycle.

Elise Bremer-Nei



Elise Bremer-Nei is the Safe Routes to School Program Coordinator and a licensed professional planner with the New Jersey Department of Transportation's Office of Bicycle and Pedestrian Programs. Originally from the Midwest, she is a Rutgers graduate with a degree in Geography. She has prior experience with the Monmouth County Planning Board, where she managed a pedestrian facilities improvement project and oversaw a Community Development Block Grant Program. She has also worked for a private engineering and design firm, focusing on bicycle and pedestrian planning. She has served on the executive board of the New Jersey Chapter of the American Planning Association and is a long-time member of the Association of Pedestrian and Bicycle Professionals. Elise has been involved with the Statewide Pedestrian Safety Study, the Statewide Bicycle and Pedestrian Master Plan, Updates to the NJDOT Roadway Design Manual, and the Development of New Jersey's Safe Routes to School Program.

Moderators & Speakers

Charles Brown



Charles Brown is a Senior Research Specialist at the Alan M. Voorhees Transportation Center and an adjunct member of the faculty at the Edward J. Bloustein School of Planning and Public Policy, both at Rutgers University. He has more than 10 years of public and private experience in the field of transportation planning and policy in 3 states: Mississippi, Florida, and New Jersey. He currently serves as the project manager of the New Jersey Bicycle and Pedestrian Resource Center and principal investigator for research and planning projects involving a range of transportation policy topics and community-based outreach and training. His experience includes conducting statewide outreach to communities of varying social, economic, and ethnic backgrounds, and managing research projects involving complete streets; bicycle and pedestrian safety and planning; economic impacts of active transportation; pedestrian safety enforcement; and safe routes to public transit for persons with disabilities and the elderly. In 2012, he was one of the lead instructors for 12 deliveries of the NJ Department of Transportation’s Complete Streets course throughout New Jersey. He recently led the development of the statewide, pedestrian and bicycle safety initiative, the New Jersey Ambassadors in Motion (NJAIM) program. Mr. Brown holds a B.S. in Management from Belhaven College and a Master of Public Administration and graduate certificate in Urban and Regional Planning from the University of Central Florida. He has served 6 years in the Mississippi Army National Guard and is a recipient of the Mississippi Commendation Medal and Global War on Terrorism Service Medal.

.....

Kimberli Craft



Kim Craft has extensive experience in project and program management and currently serves as Township Engineer for the Township of Montclair, New Jersey. A licensed professional engineer, she received her undergraduate degree in Civil and Urban Engineering from the University of Pennsylvania and earned a Masters in Public Administration from Rutgers University. As Montclair’s Engineer, she has facilitated delivery of an annual capital program of street, storm sewer and parks improvement projects, while managing a full-service municipal engineering department. She has been an innovator and has initiated and developed many new programs and procedures, including the neighborhood traffic calming program and the Montclair SAFE (Streets Are For Everyone) initiative. Earlier in her career, Kim provided consulting services in transportation planning and engineering; serving as lead engineer and project manager for various traffic and pedestrian circulation studies. She started her career in public service with the New York State Department of Transportation, first as a Junior Engineer designing highway improvement projects and ultimately managing the Highway Safety Improvement Program for the NYC region.



Moderators & Speakers

Sheree Davis



Sheree Davis is the Manager of the Bureau of Commuter and Mobility Strategies at the New Jersey Department of Transportation. She also has been serving as the State Bicycle & Pedestrian Program Coordinator for the past 11 years. During her tenure, the Bicycle & Pedestrian Program has received the Outstanding Sustainable Initiative Award by the NJ American Planning Association and the State Government Partner Award from the East Coast Greenway Alliance. Recently, Sheree was presented with the Leadership Award from the Newark Regional Business Partnership for her work in enhancing mobility for non-motorized transportation in the region. Under Sheree's direction the Department became one of the first states to adopt a Complete Streets Policy. New Jersey was recognized two years in a row by the National Complete Streets Coalition for having the strongest Complete Streets Policy in the country. Sheree is well known around the country for her leadership in improving pedestrian safety in New Jersey. New Jersey was one of the first states to adopt a Pedestrian Safety Action Plan in 2005. This 5-year plan was funded at \$74 million dollars and continues to be funded today. Capitalizing on her expertise in pedestrian safety, Sheree was tapped by NJDOT Commissioner James Simpson to oversee the development and implementation of the New Jersey Safety at Railroads Short-Term Action which she will speak about at the summit. Sheree is a career state employee with 28 years of service. She holds a Bachelor's Degree in Physical Education from Temple University in Philadelphia and a Master's Degree in Education from The College of New Jersey.

Jerry Fried



Jerry Fried serves as one of the Lead Ambassadors in the pilot New Jersey Ambassadors in Motion program. His responsibilities include managing the Complete Streets campaign, and building and sustaining relationships with elected officials, counties, and municipalities throughout NJ. Jerry Fried is a former Mayor of Montclair and a resident for 23 years. The Township has become a leader in sustainability initiatives and was the first Municipality in New Jersey to adopt a Complete Streets policy, something the State of New Jersey itself later adopted. He is the founder and former President of Bike/Walk Montclair, which works to make Montclair a safer place for pedestrians and cyclists and has been instrumental in procuring hundreds of thousands of dollars in grants for the Township. The group's annual Tour de Montclair family bike ride attracts about 1,000 participants.

Moderators & Speakers

Janet Heroux



Janet Heroux is a Prevention Specialist at New Jersey Department of Health. Since 2009, Janet Heroux has worked with the New Jersey Health Department to promote healthy eating and active living in communities and schools. Before that she was an independent consultant working to promote active community environments. From 1992 to 1998 she served as program officer for the Robert Wood Johnson Foundation. Early in her career she worked in Latin America for a maternal and child health group at Johns Hopkins University, in Djibouti for Catholic Relief Services, and in Afghanistan as a Peace Corps volunteer. She was an undergraduate in history at Harvard and earned master’s degrees in public health and business. In recent years, she chaired Princeton’s pedestrian and bicycle advisory committee, which won a 2011 Sustainable Princeton Environmental Leader Award for successfully advocating for the installation of sharrows on Princeton’s downtown streets. She currently serves on Princeton’s municipal board of health.

.....

Andrew Kay



Andrew Kay is a Research Manager at the Voorhees Transportation Center. His interests focus on the interactions between transportation systems, land use, and environmental outcomes, with a special emphasis on transportation economics and walkable, transit-oriented communities. He has contributed to numerous studies that apply quantitative methods and GIS analysis to issues in transportation planning and policy at the local, state, and national levels. Mr. Kay received his Master of City and Regional Planning degree from the Edward J. Bloustein School of Planning and Public Policy at Rutgers University in 2012, along with a Certificate of Transportation Studies. Prior to moving to New Jersey, Mr. Kay lived in Chicago, where he worked in marketing. During that time, he also was a strong advocate for active transportation and helped to organize Climate Cycle’s first Ride to Recharge - a fundraiser to bring solar power and climate science education to Chicago Public Schools. Born and raised in Miami, Mr. Kay earned his Bachelor of Arts in Philosophy from the New College of Florida.



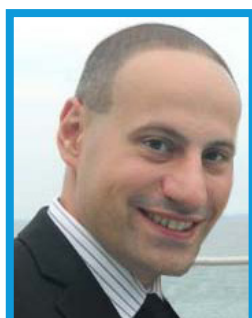
Moderators & Speakers

Debbie Kingsland



Debra Kingsland is the Section Chief for the New Jersey Department of Transportation's Office of Bicycle and Pedestrian Programs. Her professional experience includes work in Design and Planning. For the past ten years, she has worked in the Office of Bicycle and Pedestrian Programs where she oversees the work program, as well as the development, implementation, and funding of bicycle & pedestrian safety improvements. She wrote the New Jersey Complete Streets Policy which is still ranked the top policy in the nation by the Complete Streets Coalition. She continues to work on ensuring Complete Streets is integrated into all Department roadway projects.

Michael Lysicatos



Michael Lysicatos is a Senior Planner with the Passaic County Department of Planning and Economic Development. He holds a B.S. in Environmental Studies from the Richard Stockton College, a Professional Certificate in Geomatics from Rutgers University, and a M.C.R.P. from the Bloustein School at Rutgers University. Michael has been with the County since 2005, specializing in the use of GIS and other technologies to develop urban design solutions that integrate land use and transportation decisions. Michael also serves as the chair of the North Jersey Transportation Planning Authority's (NJTPA) Regional Transportation Advisory Committee (RTAC) and participates with the New Jersey Chapter of the American Planning Association. Some specific work efforts involved leading numerous visioning workshops in partnership with local municipalities; including the Madison Avenue Commuter Rail Corridor Study which received an NJ APA Smart Growth Award. One of the department's most recent efforts was the development of an update to the Transportation Element of the Passaic County Master Plan referred to as Moving Passaic County. The plan addresses all aspects of the transportation system with strategies that support economic development, environmental sustainability and mobility needs throughout the County. Complete Streets Guidelines provide the avenue to implement the plan through the guiding principles set by the NJDOT by marrying context sensitive design with engineering standards. The plan received a 2013 Smart Growth Award from New Jersey Future.

Moderators & Speakers

Charles Marohn



Charles Marohn - known as “Chuck” to friends and colleagues - is a Professional Engineer (PE) licensed in the State of Minnesota and a member of the American Institute of Certified Planners (AICP). He has a Bachelor’s degree in Civil Engineering from the University of Minnesota’s Institute of Technology and a Masters in Urban and Regional Planning from the University of Minnesota’s Humphrey Institute. He is the author of Thoughts on Building Strong Towns (Volume 1), the primary author of the Strong Towns Blog and the host of the Strong Towns Podcast and See it Differently TV. Chuck grew up on a small farm in Central Minnesota. The oldest of three sons of two elementary school teachers, he graduated from Brainerd High School in 1991. Chuck joined the Minnesota National Guard on his 17th birthday during his junior year of high school and served for nine years. Besides being passionate about planning and small towns, he loves playing music, is an obsessive reader and is a season ticket holder of the Minnesota Twins. Chuck and his wife live with their two daughters and two Samoyeds just north of Baxter, Minnesota.

.....

Heather Martin



Heather Martin, M.C.R.P., is a Research Manager at the Voorhees Transportation Center at Rutgers University, specializing in pedestrian and bicycle planning, policy, and research. She is currently conducting the New Brunswick Ciclovía Evaluation research study, which assesses the New Brunswick Ciclovía’s planning process and its impact on the health of participants, the New Brunswick community, and the local economy. As a masters student at the Bloustein School of Planning and Public Policy at Rutgers University, Heather was awarded the AITE Graduate Research Scholarship and the USDOT Eisenhower Graduate Fellowship to support her research, “Transportation Mode Interaction & Safety - A Manhattan Case Study.” She analyzed the interactions and conflicts between street users and modes from a safety perspective for a five-block corridor on 3rd Avenue in Manhattan and suggested low-cost design improvements to increase safety. Prior to graduate school, Heather worked at Stony Brook University as an Advancement Communications Associate involved in communications, alumni engagement, and fundraising. Originally from Santa Barbara, California, Heather received her B.A. in English from New York University.



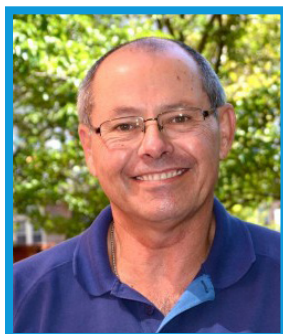
Moderators & Speakers

James Simpson



In his capacity as Commissioner of New Jersey Department of Transportation, James also is Chairman of NJ TRANSIT, the New Jersey Turnpike Authority, the South Jersey Transportation Authority and the Transportation Trust Fund Authority. James also serves on the Motor Vehicle Commission, the State's three Metropolitan Planning Organizations and the State Planning Commission. Prior to his appointment as Commissioner of Transportation he served as Chairman of both an infrastructure management company and an international relocation company. He has also served as Administrator of the Federal Transit Administration (FTA), Chairman of the St. Lawrence Seaway Board at the US Department of Transportation, Commissioner of the New York State Metropolitan Transportation Authority, member of the New York State Job Development Authority, Honorary Deputy Police Commissioner for the New York Police Department, representative for the New York City Council at the New York State Financial Control Board, and on numerous not-for-profit boards. James worked as a tractor-trailer driver and salesman while attending St. John's University where he graduated Magna Cum Laude. After graduation, he built a small trucking company into an international transportation company in less than 10 years and served as President for 25 years. At age 36, James was a finalist for the National Entrepreneur of the Year Award. James is a David Rockefeller Fellow, a British-American Fellow; a pilot rated for Jet Aircraft and has driven motorcycles for more than 35 years. James is married with four children.

Eric Snyder



Eric Snyder is the Planning Director for Sussex County. He has been a licensed planner since 1977 and is a charter member of AICP. After spending 3 years in the service, Eric served municipal and county government as an employee and a consultant since 1973, notably working for the USDA Forest Service as a Forestry Aid in Idaho. In addition to his full-time capacity with Sussex County, Eric is the Principal of Eric K. Snyder & Associates, Inc, a planning consulting firm he established in 1985, which he ran full time for 19 years, serving both private and public clients. Eric is currently the Northwest Area Representative of the APA-NJ and a member of the Legislative, Housing, and State and Regional Planning Committees. Eric received a B.S. from Cornell University in Natural Resources and a Masters of City and Regional Planning from the Edward J. Bloustein School of Planning and Public Policy at Rutgers University. He is the Past President and an active member of the NJ County Planners Association and an active Rotarian.

Moderators & Speakers

Gary Toth



Gary Toth is the Director of Transportation Initiatives with the Project for Public Spaces. He is an experienced leader with substantial expertise in transportation planning, particularly the integration of transportation with land use planning and Context Sensitive Solutions. He possesses a wide ranging network of relationships resulting from participation in many national transportation committees, projects as well as speaking engagements around the country. During his thirty four years of project management experience within the New Jersey Department of Transportation (NJDOT), Gary become known for his collaboration and facilitation skills, and was one of the architects of the transformation of NJDOT to a stakeholder inclusive process. This lead to his being a founding member of the NJDOT’s Context Sensitive Solutions (CSS) program, and has helped NJDOT become a national leader in CSS. He is a sought after resource and speaker on CSS and Integrating Transportation and Land Use at many venues, including National and Regional workshops. He is one of the eight instructors for the National Highway Institutes Training Course for Transportation and Land Use. Gary’s work with AASHTO and TRB, as well as his subsequent experience, has brought him into contact with the operations of many state DOTs around the country. This has led him to become one of the leading experts in the country on what “makes DOTs tick,” and how to engage the transportation planning, funding, project development, and design processes to achieve sustainable and livable outcomes.

Ranjit Walia



Ranjit Walia is a New Jersey-based urban planner with experience in the public and private sectors in public policy, civic engagement and transportation planning, focusing on multi-modal transportation planning issues and public outreach. Mr. Walia has recently been incorporating film as a dynamic visual tool for education and outreach. Recent efforts include a “Hoboken Transportation Film” which was used to explain in plain language the transportation planning efforts in the community, “Complete Streets NJ” which was used to educate the public on what complete streets are, their benefits, and case studies in NJ, as well as multiple planning and instructional films oriented around community and civic engagement. Before founding Civic Eye Collaborative, he was most recently project manager for the New Jersey Bicycle and Pedestrian Resource Center at the Alan M. Voorhees Transportation Center at Rutgers University for seven years and was a planner at the RBA Group, the Hunterdon County Planning Board, and Charles Nathanson and Associates before that. Ranjit holds a Masters in City and Regional Planning from the Bloustein School of Planning and Public Policy at Rutgers University.



New Jersey Complete Streets Policies as of October 14, 2013






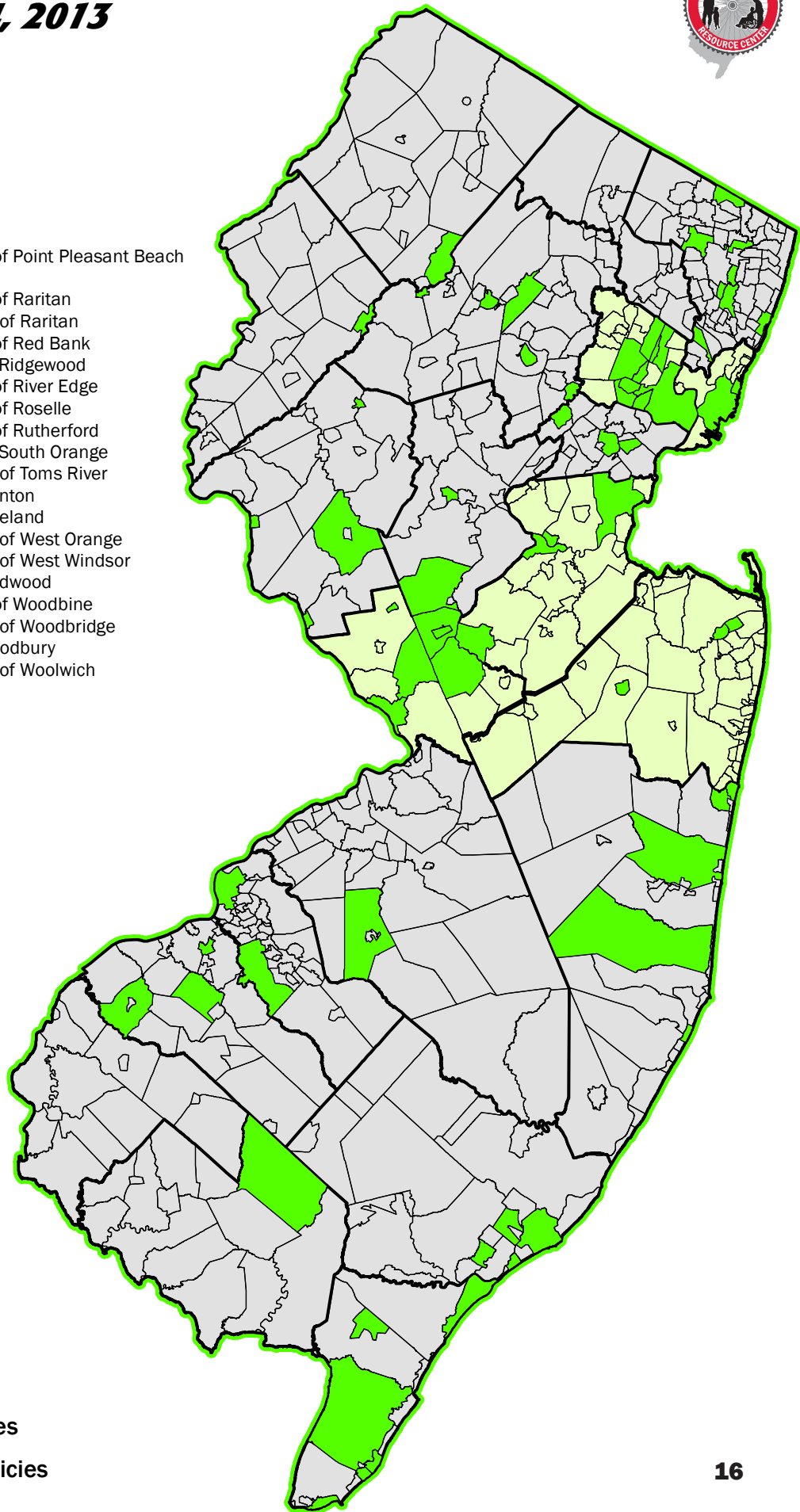
COUNTY POLICIES:

1. Essex County
2. Hudson County
3. Mercer County
4. Middlesex County
5. Monmouth County

MUNICIPAL POLICIES:

- | | |
|-------------------------------|-------------------------------------|
| 1. City of Atlantic City | 51. Borough of Point Pleasant Beach |
| 2. Township of Bloomfield | 52. Princeton |
| 3. Borough of Califon | 53. Borough of Raritan |
| 4. City of Camden | 54. Township of Raritan |
| 5. City of Cape May | 55. Borough of Red Bank |
| 6. Borough of Chatham | 56. Village of Ridgewood |
| 7. Township of Cranford | 57. Borough of River Edge |
| 8. Township of Denville | 58. Borough of Roselle |
| 9. Town of Dover | 59. Borough of Rutherford |
| 10. City of East Orange | 60. Village of South Orange |
| 11. Borough of Emerson | 61. Township of Toms River |
| 12. Borough of Fair Haven | 62. City of Trenton |
| 13. Borough of Fort Lee | 63. City of Vineland |
| 14. Borough of Freehold | 64. Township of West Orange |
| 15. Borough of Frenchtown | 65. Township of West Windsor |
| 16. Borough of Glen Ridge | 66. City of Wildwood |
| 17. Township of Gloucester | 67. Borough of Woodbine |
| 18. City of Hackensack | 68. Township of Woodbridge |
| 19. Town of Hackettstown | 69. City of Woodbury |
| 20. Borough of Harvey Cedars | 70. Township of Woolwich |
| 21. Borough of Highland Park | |
| 22. City of Hoboken | |
| 23. Borough of Hopatcong | |
| 24. Borough of Hopewell | |
| 25. Township of Irvington | |
| 26. City of Jersey City | |
| 27. Township of Lacey | |
| 28. City of Lambertville | |
| 29. Township of Lawrence | |
| 30. City of Linwood | |
| 31. Township of Mantua | |
| 32. Maplewood Township | |
| 33. City of Margate | |
| 34. Borough of Maywood | |
| 35. Township of Medford | |
| 36. Township of Middle | |
| 37. Township of Montclair | |
| 38. Township of Montgomery | |
| 39. Borough of Montvale | |
| 40. Town of Morristown | |
| 41. Borough of Netcong | |
| 42. City of New Brunswick | |
| 43. Borough of New Providence | |
| 44. City of Newark | |
| 45. City of North Wildwood | |
| 46. City of Ocean City | |
| 47. City of Orange Township | |
| 48. Township of Plainsboro | |
| 49. City of Pleasantville | |
| 50. Borough of Point Pleasant | |

-  NJDOT Complete Streets Policy
-  County Complete Streets Policies
-  Municipal Complete Streets Policies



Organizing Committee

Charles Brown, MPA, Senior Research Specialist
Alan M. Voorhees Transportation Center

Cailean Carr, Graduate Assistant Researcher
Alan M. Voorhees Transportation Center

Sheree Davis, Manager of the Bureau of Commuter and Mobility Strategies
New Jersey Department of Transportation

Jonathan Hawkins, Project Coordinator
Alan M. Voorhees Transportation Center

Andrew Kay, Research Manager
Alan M. Voorhees Transportation Center

Debbie Kingsland, Section Chief of the Office of Bicycle and Pedestrian Programs
New Jersey Department of Transportation

Heather Martin, Research Manager
Alan M. Voorhees Transportation Center

Special Thanks

We would like to extend special thanks to all the volunteers:

Andrew Bomberger

Medha Dixit

Mikhail Kublanov

Swetha Ramkumar

Danny Yoder



NOTES

[illegible]

[illegible]

2013 New Jersey Complete Streets Summit



#NJBikePed