

Designing for Complete Streets and Vision Zero in Jersey City

Complete Streets Summit
November 1, 2023

Today's Takeaways

- Complete Streets are safe streets
- Systemic change starts with vision
- Small steps can lead to transformative change
- Partnerships are key



Start with Why



Start with Why

Plan and develop a well-functioning and **safe transportation system** for the City of Jersey City that provides for equitable options for the mobility and accessibility of all users of the public right-of-way.



Vision Zero and the Safe System Approach

Fundamental Principles of Vision Zero

These principles are core to successful Vision Zero efforts:

1. Traffic deaths and severe injuries are acknowledged to be preventable.
2. Human life and health are prioritized within all aspects of the transportation system.
3. Human error is inevitable, and transportation systems should be forgiving.
4. Safety work should focus on system-level changes above influencing individual behavior.
5. Mitigation of speed is recognized and prioritized as the fundamental factor in crash severity.

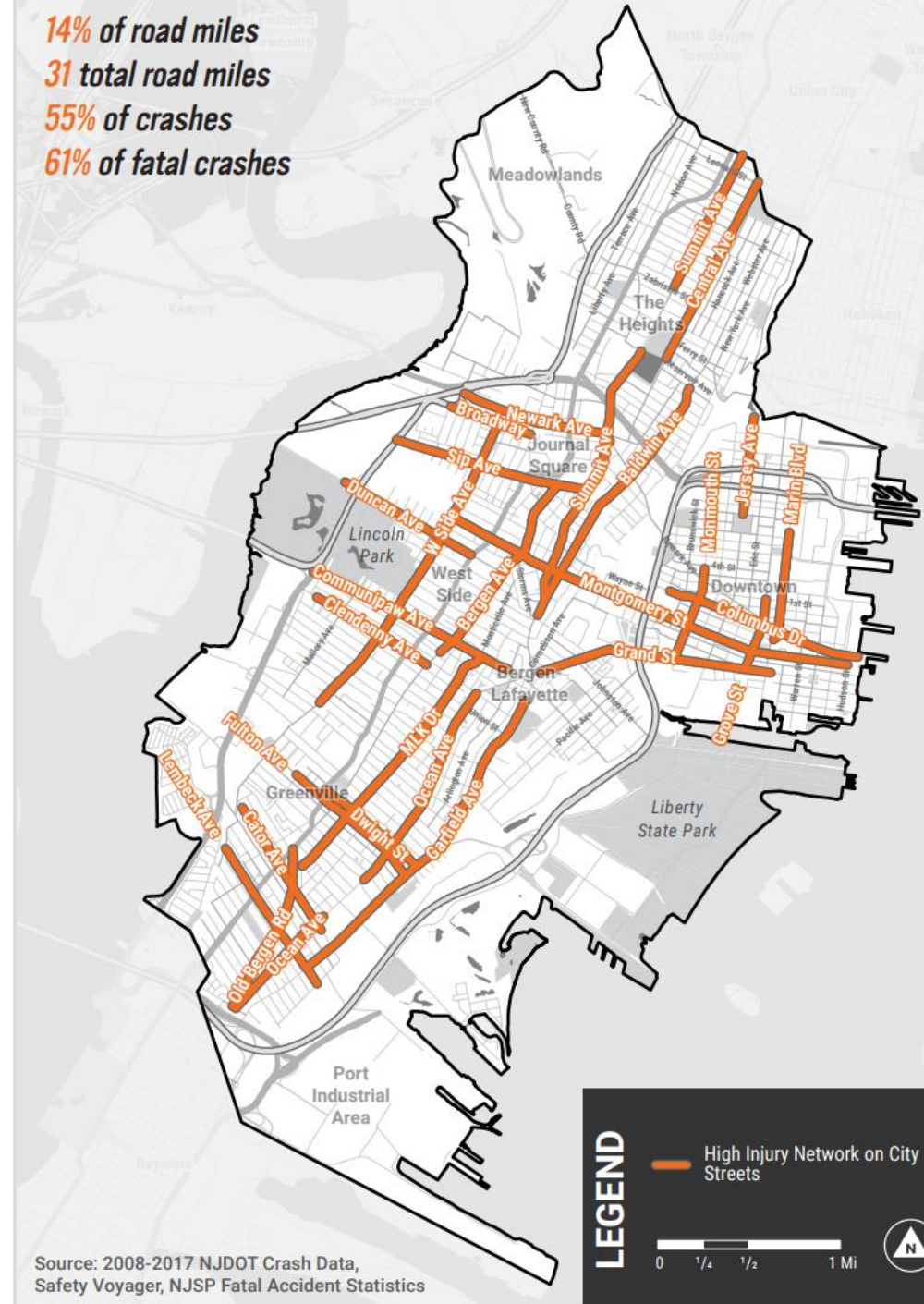
(Source: Vision Zero Network)



Vision Zero Action Plan in Jersey City

- Mayor Fulop signed VZ pledge in February 2018
- Goal: Eliminate traffic fatalities and serious injuries by 2026
- Multidisciplinary Task Force includes State and County representatives
- Identified 70+ action items under themes of Design Safer Streets, Promote a Culture of Safety, Embed Vision Zero in City Practices, & Enforcement, Law, and Policy

14% of road miles
31 total road miles
55% of crashes
61% of fatal crashes



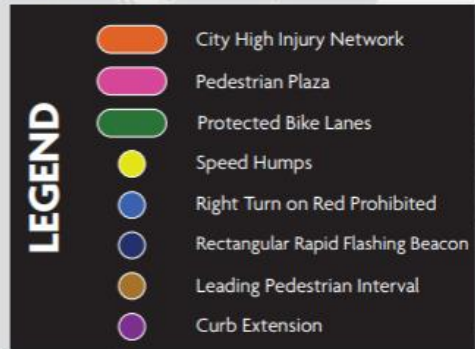
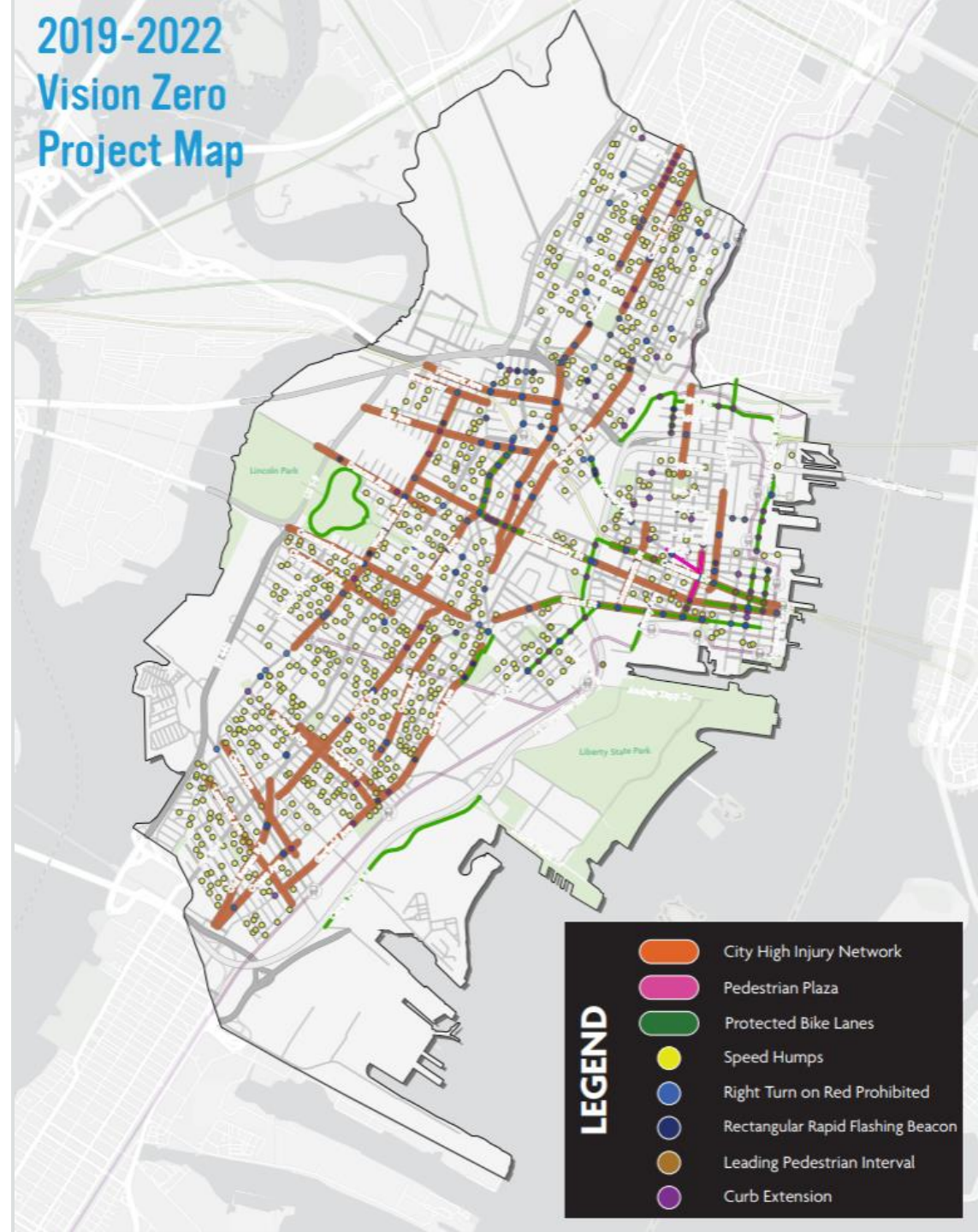
Implementation

65% (50 out of 77) action items completed or in progress

- Design Safer Streets (82%)
- Promote a Culture of Safety (58%)
- Embed Vision Zero in City Practices (65%)
- Enforcement, Law, and Policy (33%)
- Planning and Leveraging Data (88%)

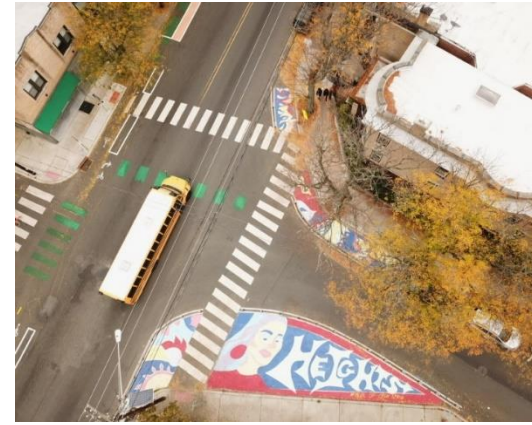


2019-2022 Vision Zero Project Map



Tactical Demonstration Projects

- Quick-build, low-cost materials
- Incorporate placemaking
- Engage community
- Living laboratory – ability to test before investing in longer term design



Curb Extensions/Daylighting

- Installed at corners where there is no legal parking
- Striped with delineators, concrete, green infrastructure



Bike Lane Upgrades

- Green Surface Covering (Latex → Endurablend)
- Barrier elements (delineators, Tuff Curb, Jersey barriers)

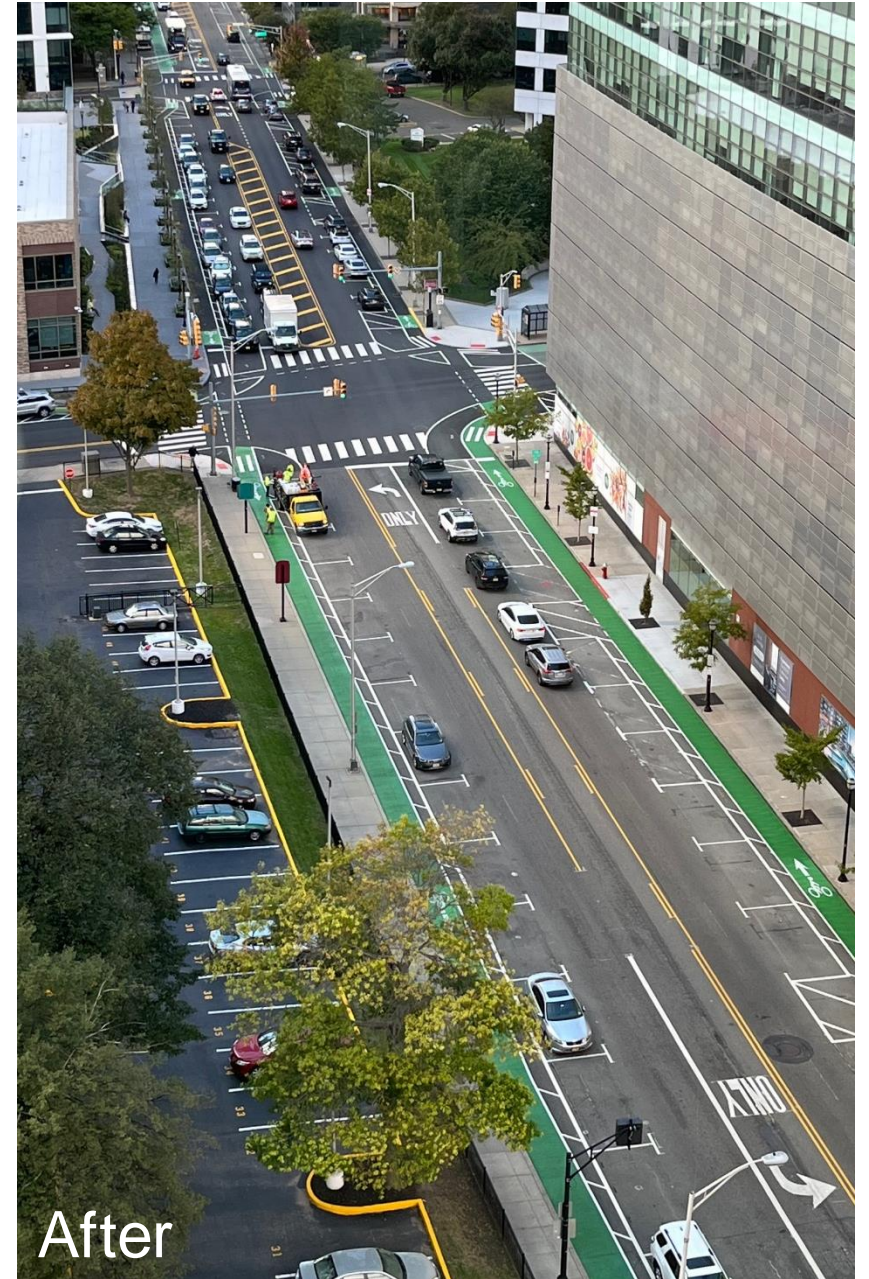


Columbus Drive

- Road diet
- Protected bike lanes
- Floating bus island
- Multiple iterations over time



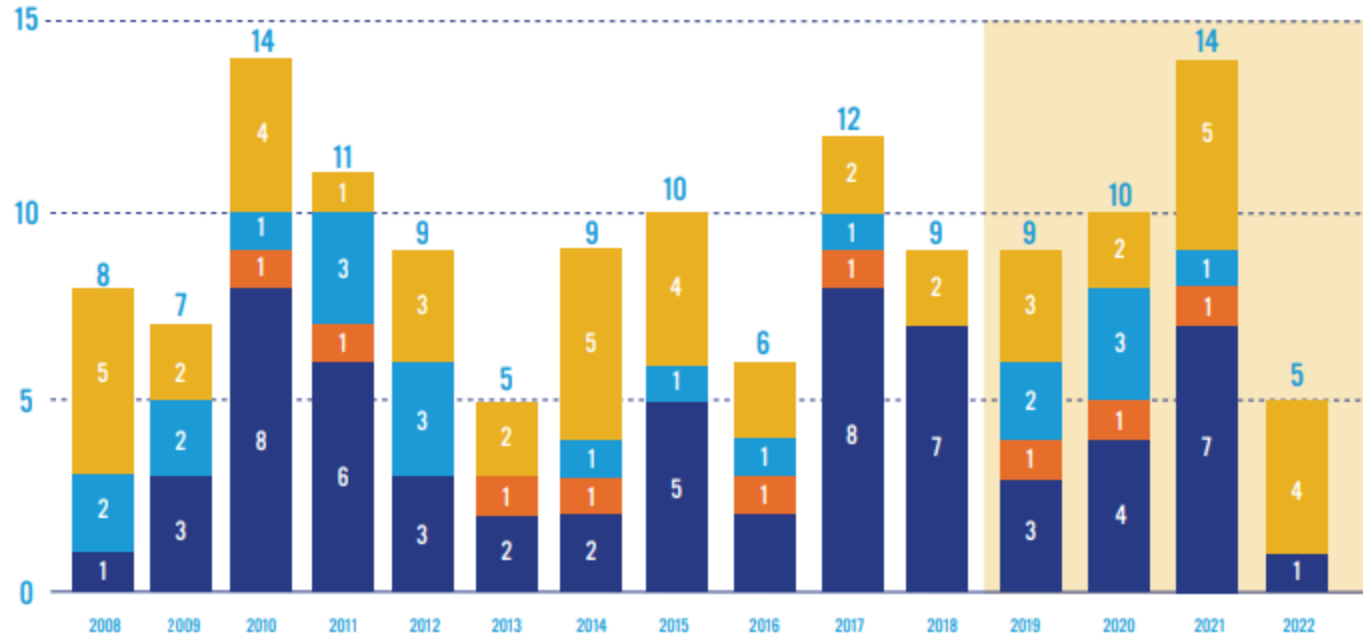
Before



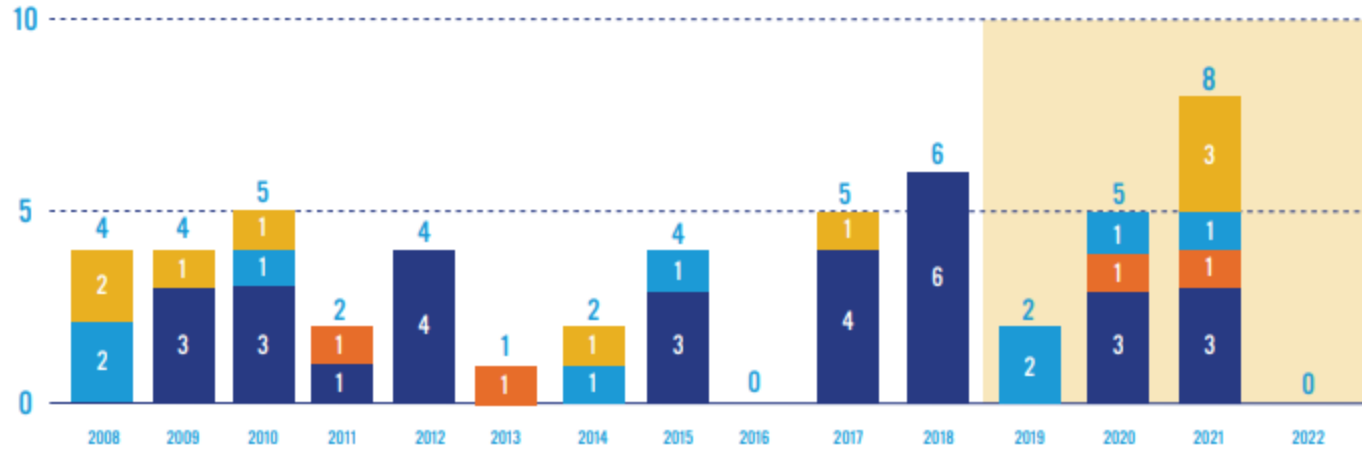
After

Crash Trends: Fatalities

Fatal Traffic Crashes - All Roads (2008 - 2022)

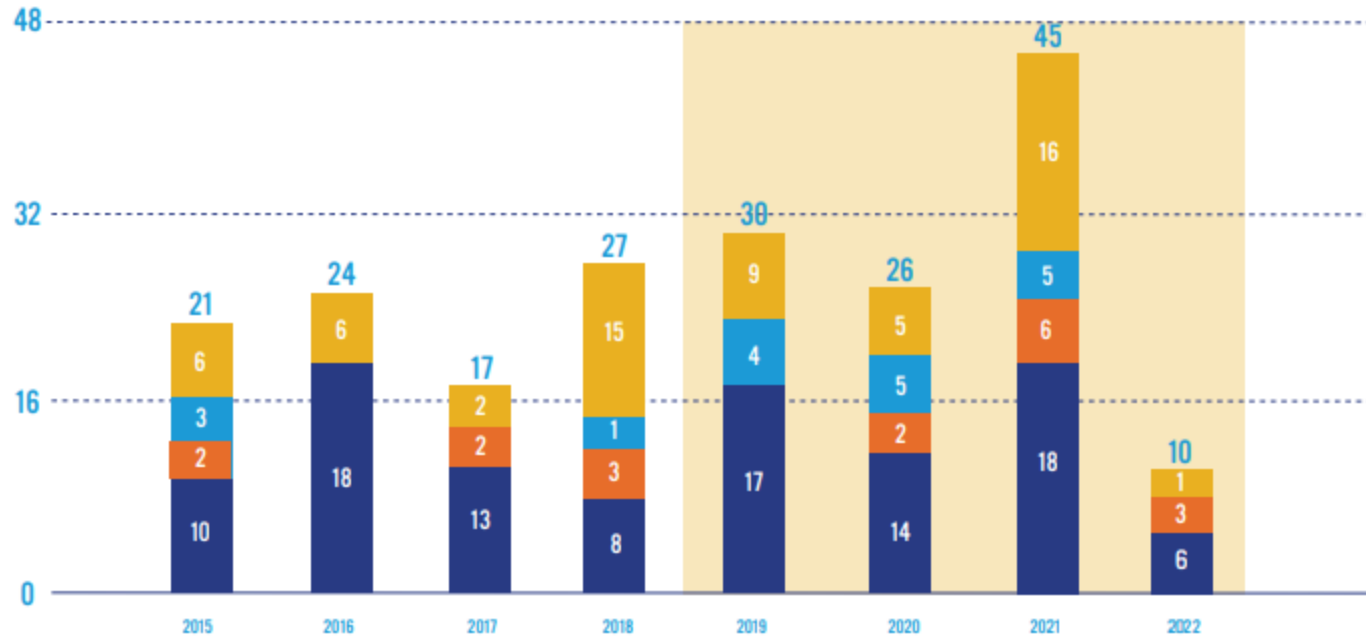


Fatal Traffic Crashes - City Streets (2008 - 2022)

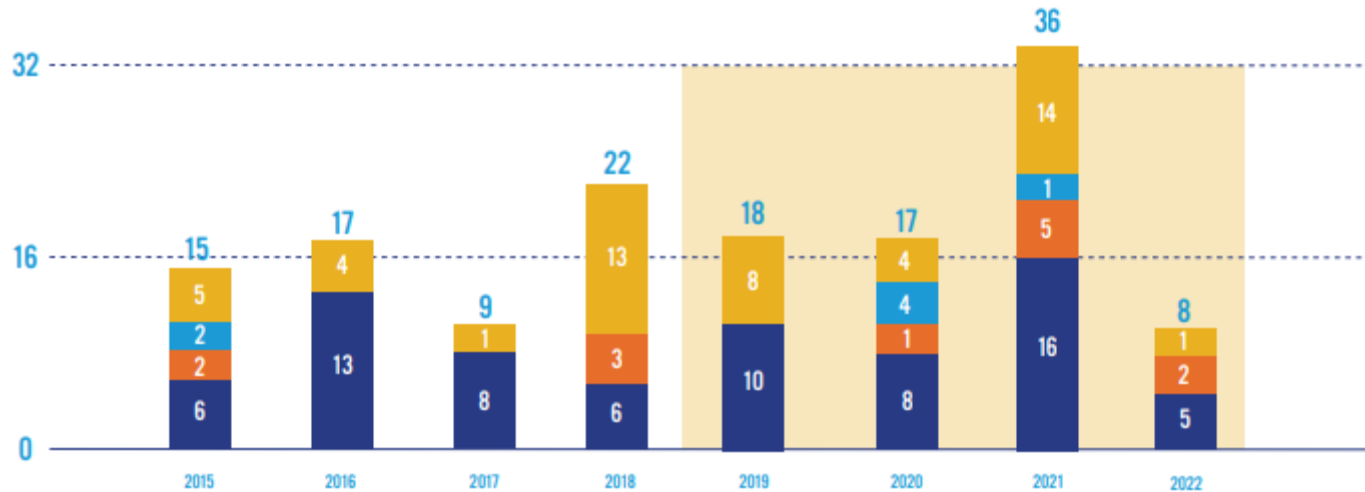


Crash Trends: Serious Injuries

Serious Injury Traffic Crashes - All Roads (2015 - 2022)



Serious Injury Traffic Crashes - City Streets (2015 - 2022)



Pedestrian
 Bicyclist
 Motorcyclist
 Motor Vehicle
 Vision Zero Adoption



**Complete Streets
are safe streets
for all.**

**Vision Zero is
possible.**

Thank you!

**More info: jcnj.org/infrastructure
Email: Lscofield@jcnj.org**