



# NJ BICYCLE & PEDESTRIAN RESOURCE CENTER

Educate. Encourage. Empower.

January 28, 2026

**Dear Readers,**

Welcome to this issue of the NJ Walks and Bikes Newsletter funded by the NJ Department of Transportation. If you would like to learn more about the NJDOT Bicycle and Pedestrian Resource Center, please visit us [here](#).

## Save the date for BPAC Meeting on February 18, 2026

**General Meeting, 9:30 am – 11:30 am**  
*coffee chat begins at 9:15 am*

The New Jersey Bicycle and Pedestrian Advisory Council (BPAC) is coordinated by the Voorhees Transportation Center on behalf of the New Jersey Department of Transportation. BPAC is open to everyone.

To participate, please register using the following link:

[Register now for the next meeting](#)

After registering, you will receive a confirmation email containing information on how to join the meeting.

To learn more about BPAC, please visit the [website here](#).  
You can also contact James Sinclair at [james.sinclair@ejb.rutgers.edu](mailto:james.sinclair@ejb.rutgers.edu).



## **Railway Crossing Safety: What You Need to Know as a Cyclist or Pedestrian**

There are over 3,400 miles of railroad tracks in New Jersey, and almost 44% of schools in the state are located within a half-mile of an active freight or passenger rail. Given that nationally, 34% of railroad incidents over the past ten years have occurred at highway-rail grade crossings, it is important to improve safety at existing crossings and to raise awareness on best practices for using and designing them.

[Learn more here.](#)

---



# THE NEW JERSEY STATE DEVELOPMENT AND REDEVELOPMENT PLAN



New Jersey State  
Planning Commission

Adopted December 17, 2025

## 2025 State Development and Redevelopment Plan

The New Jersey State Development and Redevelopment Plan (SDRP or State Plan) was adopted on December 17, 2025. The State Plan reflects current planning principles and best practices in the areas of land use, transportation, housing, environmental protection and enhancement, economic development, provision of public infrastructure, historic preservation, social justice, and adaptation to global climate change.

[Learn more here.](#)

---

2026 New Jersey Complete Streets Summit




*"Every Journey Safer"*

 **April 21, 2026**

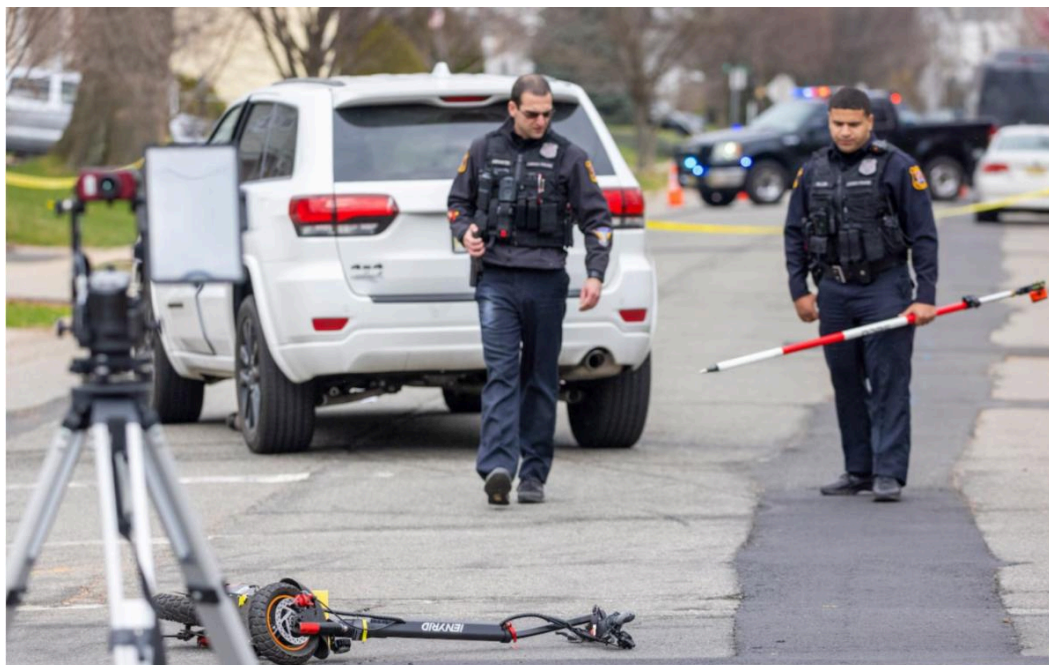
 College Ave Student Center,  
Rutgers University, New Brunswick,  
New Jersey

 **Register for free at**  
[go.rutgers.edu/completestreets2026](https://go.rutgers.edu/completestreets2026)

## 2026 Complete Streets Summit

The 2026 New Jersey Complete Streets Summit is set to take place on April 21st at the Rutgers University College Avenue Student Center in New Brunswick. This all-day event, sponsored by the New Jersey Department of Transportation, will be FREE to attend. [Registration is now open](#). Tap the button below to learn more about the Summit.

[Learn more here.](#)



## N.J. traffic deaths drop in 2025 from 30-year high in pedestrian deaths (*NJ.com*)

After a 30-year-high for pedestrian fatalities and a spike in over all traffic deaths killed in 2024, New Jersey had a less deadly year in 2025 and did better than predictions by national safety officials.

The New Jersey State Police reported a drop in the number of traffic deaths, from 684 in 2024 to 575 in 2025, representing a 15% drop. State Police caution this is a preliminary number that could change.

[Learn more here.](#)



## Gov. Phil Murphy signs e-bike bill criticized by bike advocates (*New Jersey Monitor*)

New Jersey will have some of the strictest regulations on electric bikes in the nation under a bill Gov. Phil Murphy signed into law on January 19th, 2026.

The bill was heavily opposed by transportation groups and bike advocates. They called the legislation too restrictive for everyday e-bike riders and said it would disproportionately harm immigrant and low-income riders who rely on them for work.

[Learn more here.](#)



## Postscripts to the Near-Miss for a Driver and Pedestrian on a Princeton Crosswalk (*TAPinto Princeton*)

The driver's view of Wiggins before making a left hand turn from Madison Street onto Wiggins. In the photo on the left, two people are barely visible in front of the pedestrian crossing sign. On the right, one person in a high-vis jacket and hat stands in the same place. He seems much more visible, but he shouldn't bet his life on it.

[Learn more here.](#)

Join Us at the  
**NJ Safe Routes Academy**  
Saturday, March 7, 2026  
Crowne Plaza Princeton - Conference Center



In conjunction with the  
Bike and Walk Coalition  
Summit

**REGISTER NOW!**

[saferoutesnj.org/safe-routes-academy/](https://saferoutesnj.org/safe-routes-academy/)

**SafeRoutes**  
Academy



## New Jersey Bike & Walk Summit

The NJ Safe Routes Academy, sponsored by the NJ Department of Transportation, focuses on sessions that allow participants to make their communities more walk- and bike-friendly for all users of all abilities. The next Safe Routes Academy will take place in coordination with the 2026 New Jersey Bike & Walk Summit on Saturday, March 7th, at Crowne Plaza Princeton - Conference Center. Tap the button below to learn more about the last Safe Routes Academy, held in March 2025.

[Learn more here.](#)



## The Best New U.S. Bike Lanes of 2025

2025 was a banner year for better biking as cities across the U.S. moved beyond paint and flex-posts and invested in permanent, people-centered street design. The best bike projects built last year are fully protected, thoughtfully engineered, and tailored to the needs of their communities, making streets safer and easier to navigate for people of all ages and abilities.

[Learn more here.](#)



## Seven Stellar New Rail-Trails: 2025's Gift to America

On the cusp of Rails to Trails Conservancy's 40th birthday and America's 250th, they are taking a moment to appreciate how far the movement has come. With more than 25,000

miles of rail-trails open today—more than any other country in the world—it's something everyone can be proud of. And there's one in New Jersey that made the list!

[Learn more here.](#)

## From our friends at the NJDOT Safe Routes to School Resource Center



### Why Winter Sidewalk Maintenance Matters for Pedestrian Safety

Recent winter weather in New Jersey offers a timely reminder of how essential proper sidewalk maintenance is for pedestrian safety. While snow can transform our communities into picturesque winter scenes, it can also make basic tasks, like walking down the street, difficult and dangerous. Students walking to school, crossing guards, older adults, and people with disabilities are especially vulnerable when sidewalks become impassable due to snow and ice.

[Learn more here.](#)



## **Asbury Park to Install New Bike Parking Infrastructure Across City by Spring 2026 (*TAPinto Asbury park*)**

The City of Asbury Park is moving forward with a new round of bike-friendly infrastructure improvements, announcing plans to install additional bicycle parking across key corridors and at the city's Transportation Center by Spring 2026.

Funded through a Local Aid Infrastructure Fund (LAIF) Grant, the project includes the purchase and installation of 19 bicycle racks, two bicycle corrals, and eight bicycle lockers. City officials say the additions are designed to improve access to local businesses, public spaces, and public transit—making it easier for residents, workers, and visitors to bike throughout Asbury Park and comfortably secure their bicycles once they arrive.

[Learn more here.](#)

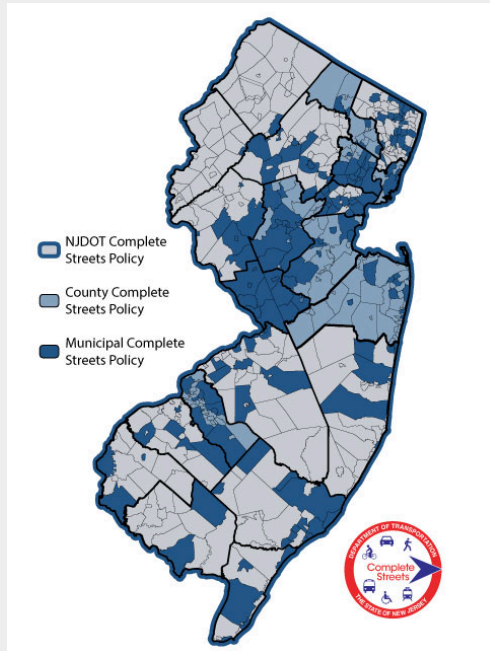


## **Middlesex County Awarded Nearly \$1.5 Million for Pedestrian Safety Improvements at Oak Tree Road and County Road 604 (*TAPinto Edison*)**

Middlesex County has been awarded a grant to improve pedestrian safety at Oak Tree Road and County Road 604, located in Edison and Woodbridge. The \$1,499,000 grant comes from the 2025 Transportation Alternatives Set-Aside Program, sponsored by the NJDOT in partnership with the North Jersey Transportation Planning Authority, Delaware Valley Regional Planning

[Learn more here.](#)

Commission, and the South Jersey Transportation Planning Organization.



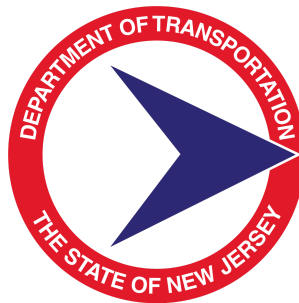
*An up-to-date list of Complete Streets policies in New Jersey*

There are currently **183** municipalities and **8** counties with Complete Streets policies in New Jersey.

This brings the total New Jersey population living in municipalities with Complete Streets policies to over 4 million people, or 46% of the population.

To access the most up-to-date list of Complete Streets policies adopted in the state, click the button!

[Click here for the complete list of policies.](#)



**NJDOT Bicycle and Pedestrian Resource Center**  
Phone: (848) 932-7901 | [bikeped@ejb.rutgers.edu](mailto:bikeped@ejb.rutgers.edu) | [njbikeped.org](http://njbikeped.org)

[Visit Our Website](#)



Voorhees Transportation Center | 33 Livingston Avenue | New Brunswick, NJ 08901 US

[Unsubscribe](#) | [Update Profile](#) | [Constant Contact Data Notice](#)



Try email marketing for free today!