



NJ BICYCLE & PEDESTRIAN RESOURCE CENTER

Educate. Encourage. Empower.

March 9, 2026

Dear Readers,

Welcome to this issue of the NJ Walks and Bikes Newsletter funded by the NJ Department of Transportation. If you would like to learn more about the NJDOT Bicycle and Pedestrian Resource Center, please visit us [here](#).

Join Us at the Next BPAC Meeting on June 3, 2026

General Meeting, 9:30 am – 11:30 am
coffee chat begins at 9:15 am

The New Jersey Bicycle and Pedestrian Advisory Council (**BPAC**) is coordinated by the Voorhees Transportation Center on behalf of the New Jersey Department of Transportation. BPAC is open to everyone.

To participate, please register using the following link:

[Join the next meeting.](#)

After registering, you will receive a confirmation email containing information on how to join the meeting.

To learn more about BPAC, please visit the [website here](#).
You can also contact James Sinclair at james.sinclair@ejb.rutgers.edu.



2026 New Jersey Complete Streets Summit

"Every Journey Safer"

 **April 21, 2026**

 College Ave Student Center,
Rutgers University, New Brunswick,
New Jersey

 **Register for free at**
go.rutgers.edu/completestreets2026



2026 NJDOT Complete Streets Summit

The 2026 NJDOT Complete Streets Summit is set to take place on April 21st at the Rutgers University College Avenue Student Center in New Brunswick. This all-day event, sponsored by the New Jersey Department of Transportation, will be **FREE** to attend. [Registration is now open](#). Tap the button below to learn more about the Summit.

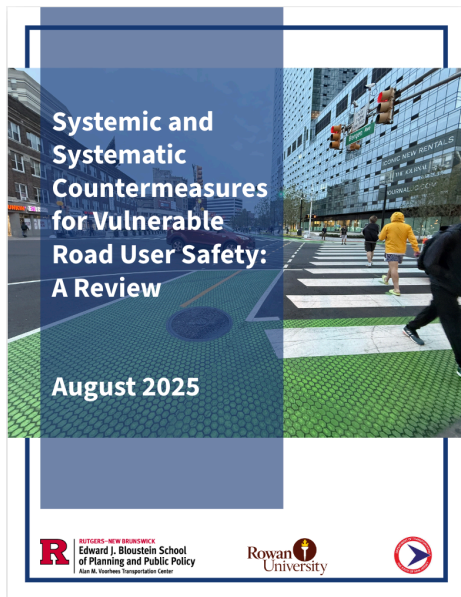
[Learn more here.](#)



NJDOT Bicycle & Pedestrian Resource Center: 2025 Year in Review

The NJDOT Bicycle & Pedestrian Resource Center experienced a dynamic and eventful 2025. The BPRC engaged in a variety of activities and initiatives over the past year, which ranged from providing technical support to municipalities and publishing articles on the NJ Walks and Bikes blog, to researching significant subjects such as micromobility best practices and safety countermeasures.

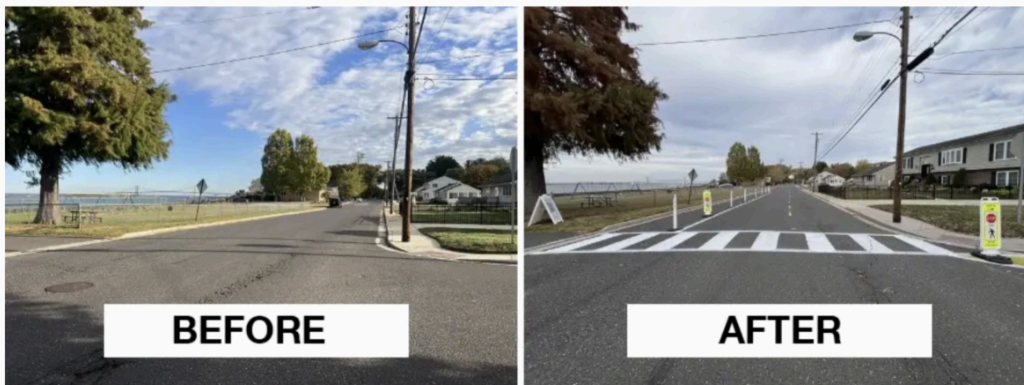
[Learn more here.](#)



New Report on Systemic and Systematic Safety Now Available

The NJDOT Bicycle and Pedestrian Resource Center and Rowan University have recently released a new report: Systemic and Systematic Safety Countermeasures for Vulnerable Road User Safety: A Review. The report examines the increasing safety concerns for vulnerable road users, particularly pedestrians and bicyclists, amid rising numbers of traffic crashes. It highlights the need for comprehensive safety strategies through systemic and systematic approaches, emphasizing data-driven decision-making.

[Learn more here.](#)



SJTPO's Complete Streets Demonstration Library is Open for Business

Working in partnership with Cross County Connection TMA (CCCTMA), SJTPO has launched a Complete Streets Demonstration Library to support quick-build projects of this type. The Complete Streets Demonstration Library is available free of charge to support communities in southern New Jersey who want to undertake demonstration projects to explore a range of temporary street designs. Often, these projects are used to demonstrate traffic calming measures in areas where driver speeds are of concern.

[Learn more here.](#)



N.J. County Envisions 50 miles of New Recreational Trails Across Network through 8 Towns (*nj.com*)

More than 50 miles of new recreational trails spanning eight towns in Burlington County could be built, according to a study recently approved by the county commissioners. The 251-page Southern Regional Trails Feasibility Report details potential routes, construction costs and expected benefits for trail development. The trail would span Mount Laurel, Moorestown, Maple Shade, Evesham, Medford, Tabernacle, Southampton and Shamong.

[Learn more here.](#)



New Pedestrian Bridge Offers Stunning Views of New Jersey's Great Falls (*nj.com*)

Paterson officials gathered Thursday to open the new pedestrian bridge overlooking the Great Falls, the latest improvement to the national park that will provide visitors with a closer look at the source of power behind America's first industrial center. The new bridge

replaces the old one that was shut down in August 2021 due to structural deficiencies. Built for \$1.5 million with federal, county, and city funding, the new span crosses the 77-foot high chasm and connects one side of the national park to the other.

[Learn more here.](#)

Design Phase Approved for Greenway Trail in Cedar Knolls *(TAPinto Hanover Township)*

At its last meeting on February 12, the Hanover Township Committee approved a professional services resolution to retain an engineering firm to begin design work on the proposed Greenway Trail in the Cedar Knolls section of Hanover Township. Resolution 47-2026 authorizes Colliers Engineering to prepare plans for a pedestrian nature trail along a 74-acre corridor between Ridgedale Avenue and East Hanover Avenue.

[Learn more here.](#)

From our friends at the NJDOT Safe Routes to School Resource Center



The Importance of Crossing Guards in School Zone Safety

Crossing guards are integral to the safety of children who walk and bike to school. The presence of crossing guards is often a deciding factor in whether parents let their children walk or bike to school, as they protect students against speeding and distracted driving and help them navigate heavy traffic. Beyond safety, crossing guards represent a consistent community presence and can help bring peace of mind not only to parents, but

to other community members as well. However, despite their critical role, municipalities face significant challenges when it comes to recruiting and retaining crossing guards.

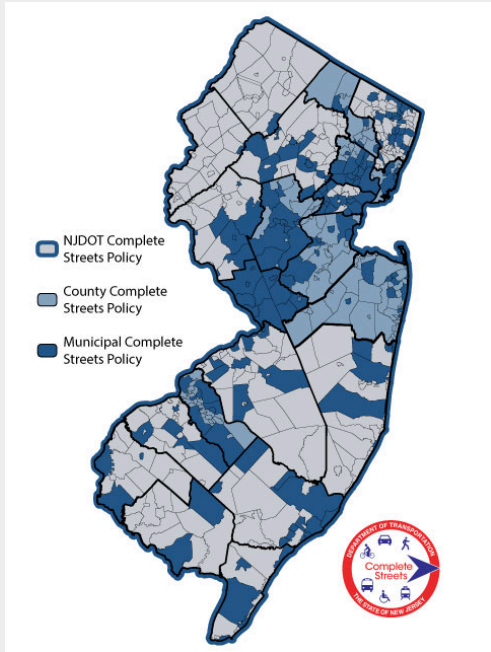
[Learn more here.](#)



Essex County Secures \$41.9M for Improvements at 36 High-Crash Intersections (*nj.com*)

Essex County will receive \$41.9 million in grants to improve safety at 36 intersections through two traffic signal improvement projects located north and south of Interstate 280. The projects include installing three new traffic signals and upgrading 34 existing signals. Additional improvements include leading pedestrian intervals and all-pedestrian phases, realigned high-visibility crosswalks, pedestrian refuge islands at select locations, and upgraded signs and pavement markings to improve safety and traffic operations.

[Learn more here.](#)



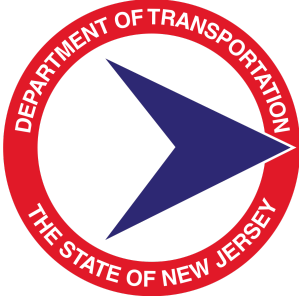
An up-to-date list of Complete Streets policies in New Jersey

There are currently **183** municipalities and **8** counties with Complete Streets policies in New Jersey.

This brings the total New Jersey population living in municipalities with Complete Streets policies to over 4 million people, or 46% of the population.

To access the most up-to-date list of Complete Streets policies adopted in the state, click the button!

Click here for the complete list of policies.



NJDOT Bicycle and Pedestrian Resource Center
 Phone: (848) 932-7901 | bikeped@ejb.rutgers.edu | njbikeped.org

Visit Our Website



Voorhees Transportation Center | 33 Livingston Avenue | New Brunswick, NJ 08901 US

[Unsubscribe](#) | [Update Profile](#) | [Constant Contact Data Notice](#)



Try email marketing for free today!