

# Connect Warren County



Safe, accessible, efficient, functional travel for all

## Warren County Comprehensive Complete Streets Policy and Implementation Plan

*NJDOT  
Complete Streets Summit  
MEETING  
April 21, 2026  
9:30 a.m.*



A street scene in Warren County, showing a row of multi-story residential buildings on both sides of a paved road. Several cars are parked or driving on the street. A semi-transparent dark blue horizontal band is overlaid across the middle of the image, containing the text 'WHAT IS THE CONNECT WARREN COUNTY PLAN ABOUT?' in white, bold, sans-serif font. The background is slightly faded to make the text stand out.

# WHAT IS THE CONNECT WARREN COUNTY PLAN ABOUT?

# Connect Warren County

## Plan Purpose

- Institutionalize implementation of Complete Streets with a focus on rural and small-town strategies.



Paved shoulders



Sidepaths



Multi-modal Main Street

# Vision

- Every person in Warren County has the right to travel safely, without risking death or serious injury on roads.
- We envision a safe, balanced, and environmentally sustainable multi-modal transportation system that preserves the County's scenic rural landscapes, prized farmlands, natural and historic assets, and quality of life.
- We aim to provide diverse transportation by creating roads to accommodate people of all ages and abilities.
- Our goal is seamless movement of people and goods, with a focus on active living, mobility independence, and equitable access to services.

# Project Team



# NJTPA

## STEERING ADVISORY COMMITTEE



Planning Department  
Engineer's Office  
Dept. of Human Services  
Dept. of Land Preservation  
Planning Board



## Avenues in Motion



# KEY ELEMENTS OF THE PLAN



# Action Plan: 7 Primary Action Areas

**1** Institutionalize Complete Streets By Enacting Policies, Plans And Guidelines At The County Level.

**2** Encourage Municipal Adoption Of Complete Streets Policies And Plans Through Technical Assistance, Incentives, Leadership And Engagement.

**3** Build Complete Streets Networks Throughout The County.

**4** Support And Enhance Municipal Education And Public Awareness Programs About Complete Streets In The County.

**5** Encourage Freight-Related Complete Streets Guidelines Across County Departments And Municipalities And Continually Engage With Freight Companies.

**6** Monitor The County's Progress Implementing Complete Streets.

**7** Prioritize safety through speed management.

# Complete Streets Toolbox



*Amendments  
to the Highway  
and Bridge  
Standards*



*Model County  
Complete  
Streets Policy*



*Complete  
Streets Model  
Policy,  
Development  
Checklists for  
Municipalities*



*Complete  
Streets  
Typology*



*Complete  
Streets  
Network Map*



*Visual Guide of  
Key Design  
Treatments*

# County Commitment: Complete Streets Policy

## Policy Components:

- **Implementation Measures:** Align municipal plans, policies, and procedures with Complete Streets goals
- **Advisory Committee:** Establish a local committee to oversee and guide implementation
- **Comprehensive Planning:** Update Master and Capital Plans to integrate Complete Streets
- **Public Participation:** Require community engagement in decision making
- **Exceptions and Prioritization:** Define project-level exceptions and prioritize safety when needs conflict
- **Developer Contributions:** Require developers to support the creation of a Complete Streets network
- **Monitoring & Evaluation:** Use checklists and performance benchmarks to track progress

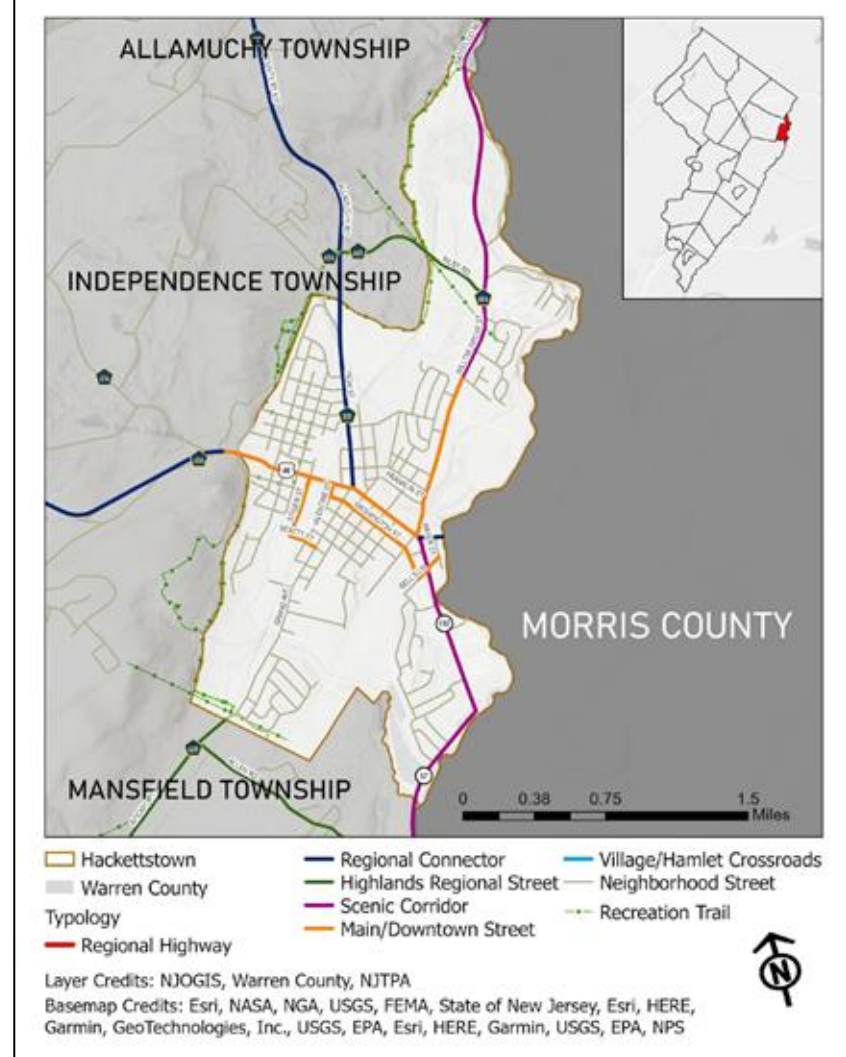
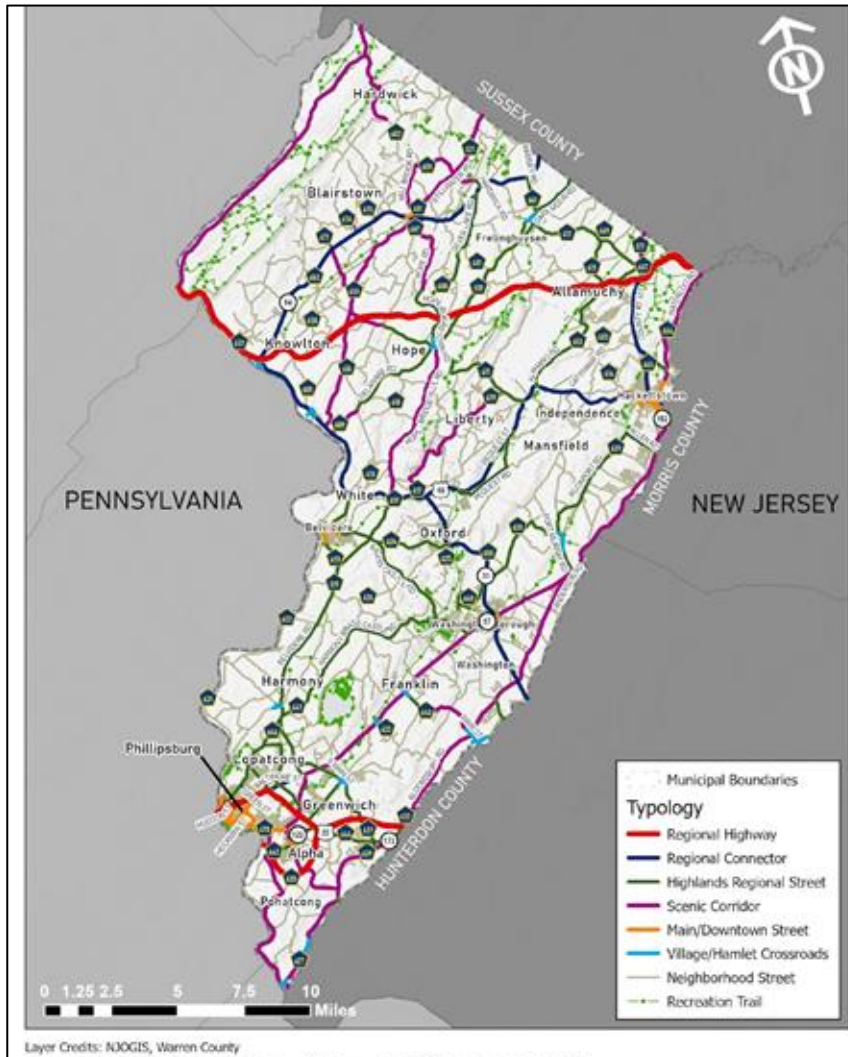
# County Commitment: Highway and Bridge Standards

**Highway and Bridge Standards:** To provide guidance for the design of road and bridge improvements under County jurisdiction.

1. Review existing county standards for roadways and bridges
2. Identify where current standards limit Complete Street designs
3. Update standards to allow flexibility for bike, pedestrian and transit elements



# Complete Streets Typology



# Complete Street Typology



**REGIONAL  
HIGHWAY**

**REGIONAL  
CONNECTOR**

**HIGHLANDS  
REGIONAL  
STREET**

**SCENIC  
CORRIDOR**



Varies 40' - 80'



Varies 40' - 80'



Varies 40' - 60'



Varies 30' - 45'

Varies 130'

# Complete Street Typology



**MAIN STREET**

**VILLAGE/  
HAMLET  
CROSSROADS**

**NEIGHBORHOOD  
STREET**

**RECREATIONAL  
TRAIL**



Varies 30' - 40'



Varies 20' - 30'



Varies 16' - 30'



Varies 8' - 12'

# Scenic Corridor



A Scenic Corridor is an arterial or collector with scenic or tourism value that connects town centers and developed areas through areas characterized by rural farmland or natural landscapes within Warren County. A Scenic Corridor provides connectivity as well as a sense of place and of natural and cultural heritage.



Varies ±30'

<b>Roadway Width</b>	±30' (one travel lane in each direction with no shoulder)
<b>Functional Class</b>	Minor arterial, Major collector, Scenic Byway
<b>Traffic Volume</b>	5,000 – 15,000 AADT
<b>Travel Speeds</b>	35 – 45 MPH Posted Speed Limit
<b>Freight Corridor</b>	Yes
<b>Parking</b>	No
<b>Sidewalks</b>	Limited or no
<b>Bike Facilities</b>	No
<b>Jurisdiction</b>	NJDOT, Warren County, Municipal
<b>Warren County Examples</b>	Asbury-Bloomsbury Road (CR-632), Millbrook Road

# Scenic Corridor



## RECOMMENDATIONS

### SAFETY/ FREIGHT

Wider Edge Lines



Source: Texas Transportation Institute, from Proven Safety Countermeasures – Wider Edge Lines, FHWA.

### GREEN INFRASTRUCTURE

Rain Gardens/Vegetated Swales



Source: Somerset County, from Somerset County Design Book

### PEDESTRIAN MOBILITY

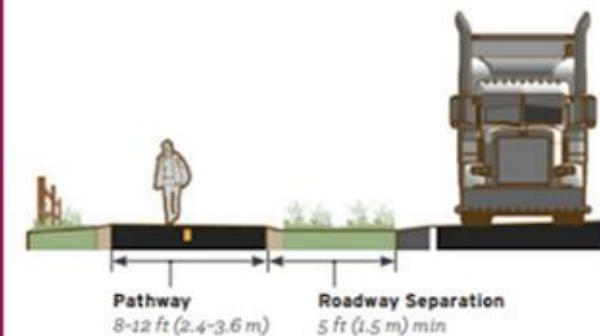
Rectangular Rapid Flashing Beacon



Source: Electrotechnics Corporation, from What to Know About Rectangular Rapid Flashing Beacons, June 9, 2021.

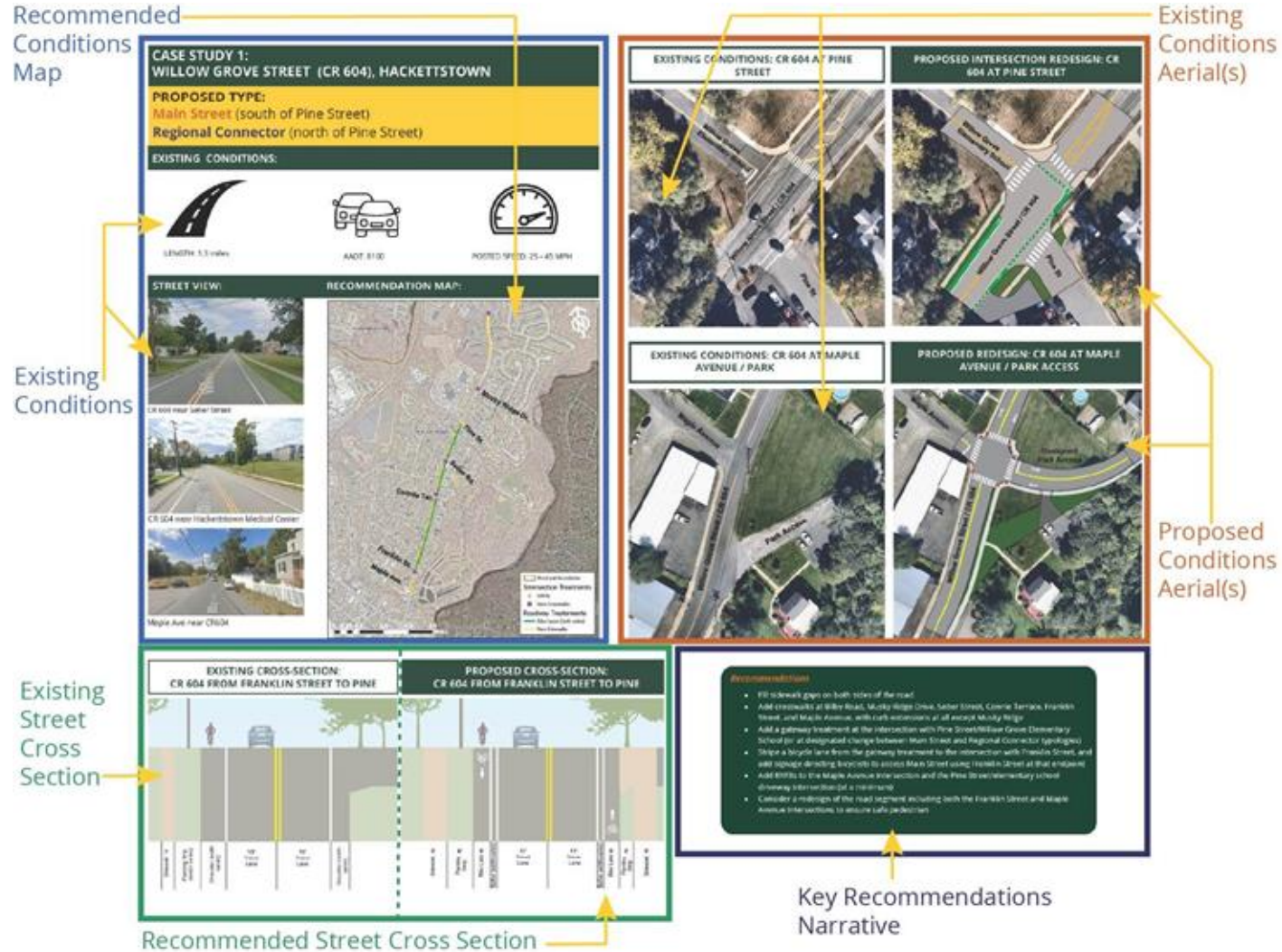
### BICYCLIST MOBILITY

Sidepath



Source: FHWA, from Small Town and Rural Multimodal Networks

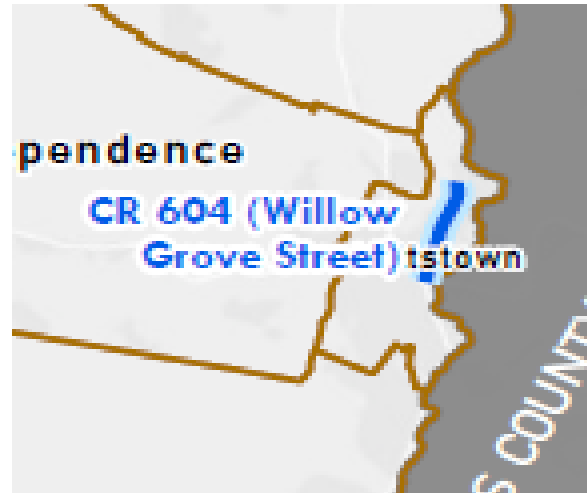
# Complete Streets Case Studies



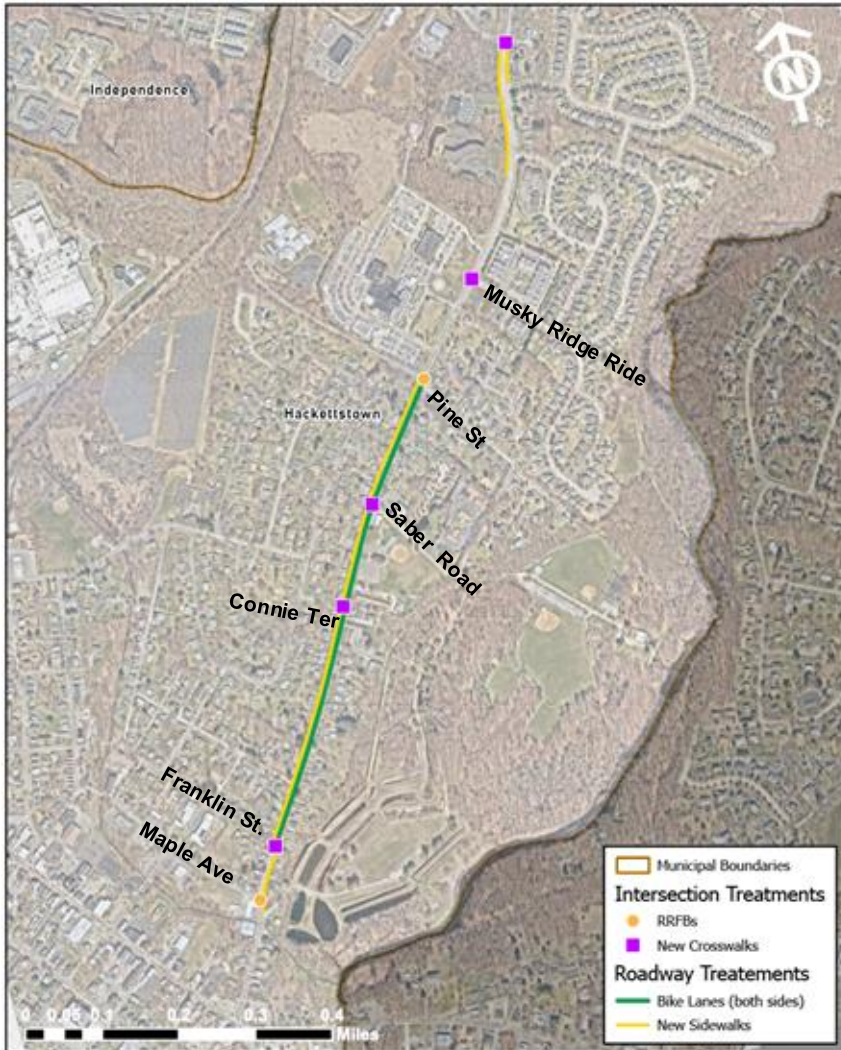
# Case Study Location

## Willow Grove Street (CR 604)

- Main Street (US-46) to Bilby Road (CR 665), Hackettstown



# Willow Grove Street (CR 604), Hackettstown



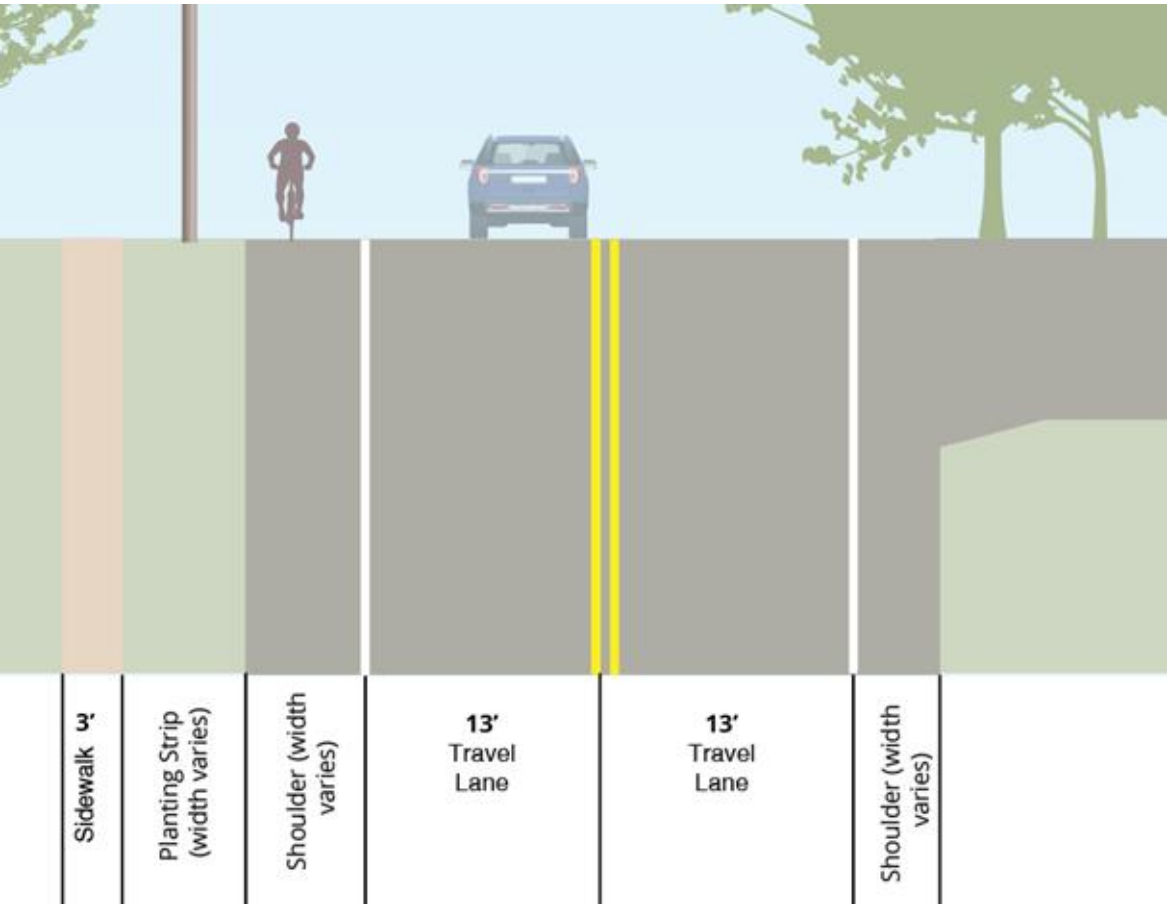
## RECOMMENDATIONS

- Fill sidewalk gaps
- Add crosswalks (locations marked ■) with curb extensions
- Rectangular Rapid Flashing Beacons (RRFBs) at Franklin Street and Pine Street
- Bike Lanes between Franklin Street and Pine Street

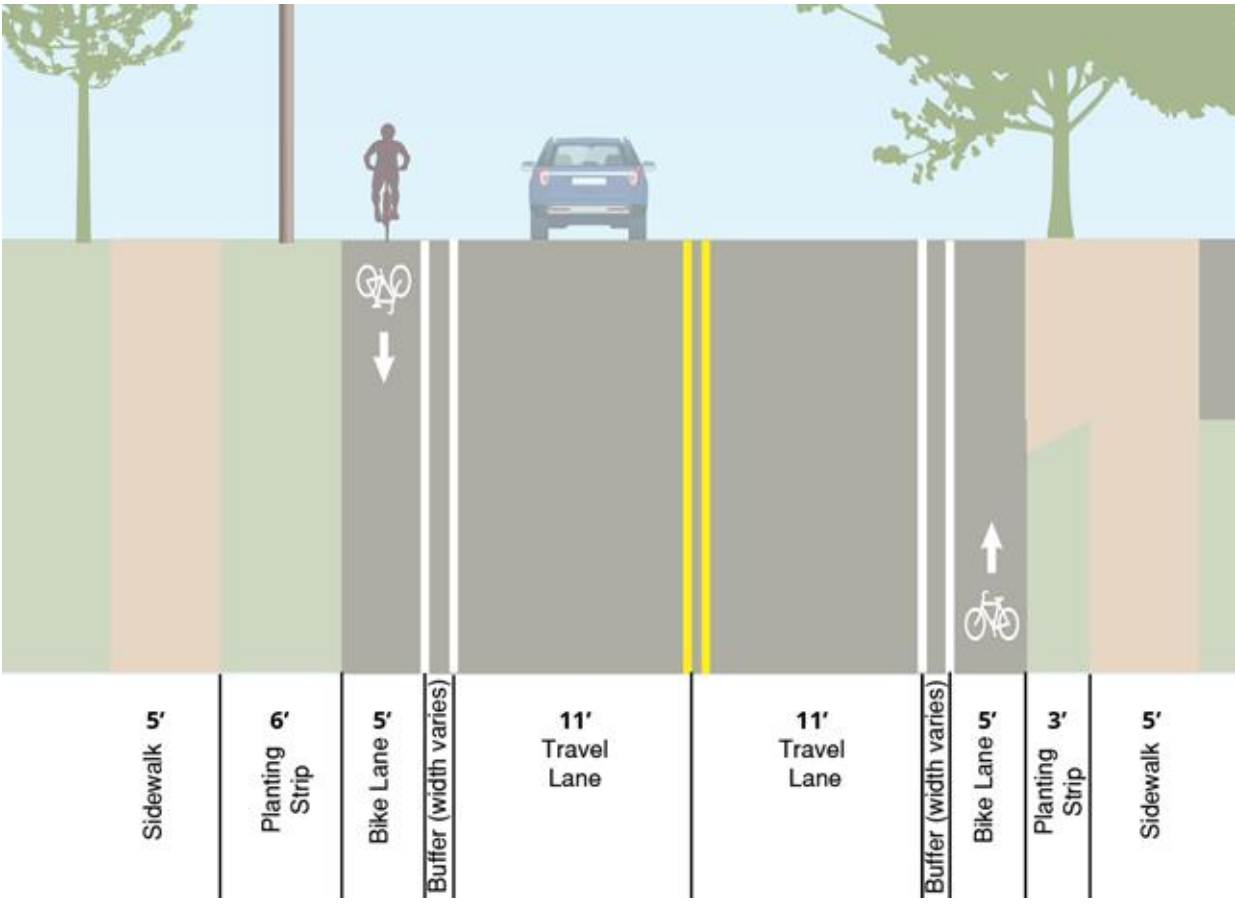
**Typology: Main Street** (south of Pine Street);  
**Regional Connector** (north of Pine Street)

# Willow Grove Street (CR 604), Hackettstown

Existing Corridor Profile: CR 604 from Franklin Street to Pine Street



Proposed Cross-Section: CR 604 from Franklin Street to Pine Street



# Willow Grove Street (CR 604), Hackettstown

Existing Conditions: CR 604 at Maple Avenue / Park Access

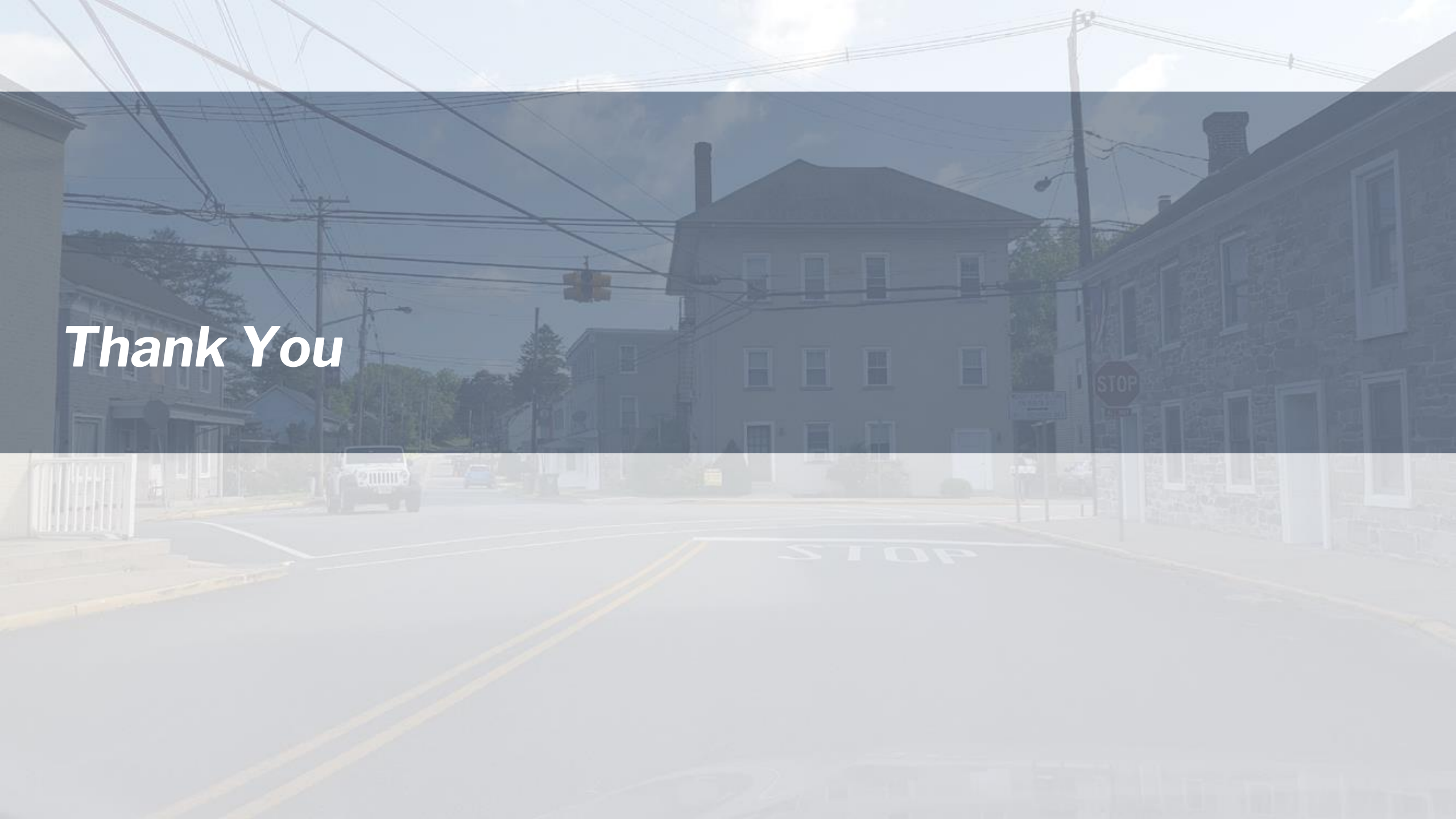


Proposed Redesign: CR 604 at Maple Avenue / Park Access





*Thank You*



# THANK YOU

**QUESTIONS ON COMPLETE  
STREETS OR CONNECT WARREN  
COUNTY PLAN?**



*Email us at*  
**[planningdept@co.warren.nj.us](mailto:planningdept@co.warren.nj.us)**