

ESSEX²⁰₄₅



Outreach Pop-ups w/Tactical Urbanism Demo Projects

Oct & Nov 2022



Crash Hotspots

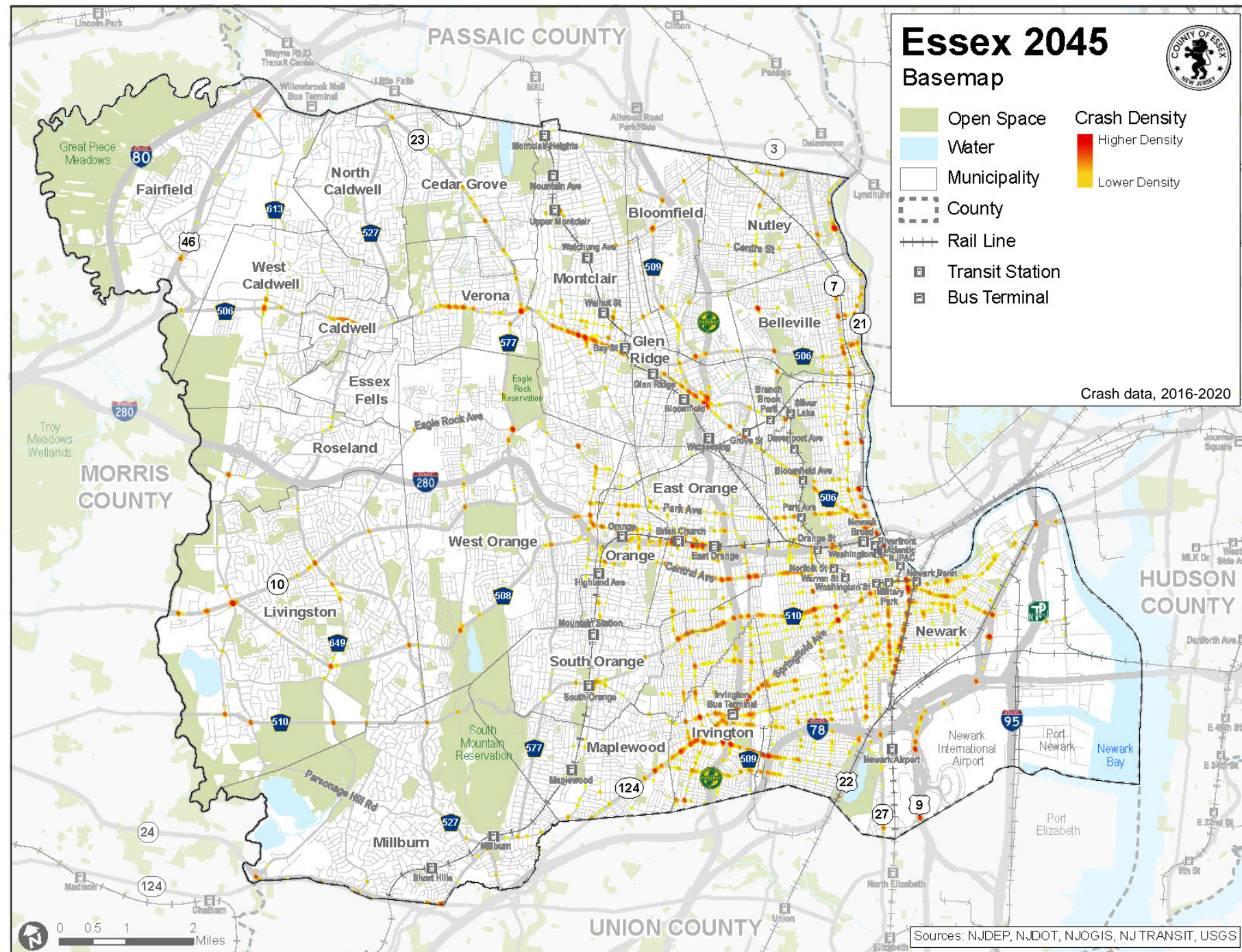
- All travel modes
- 2016-2020

Total Crashes: 100,448

KSI Crashes: 1,058

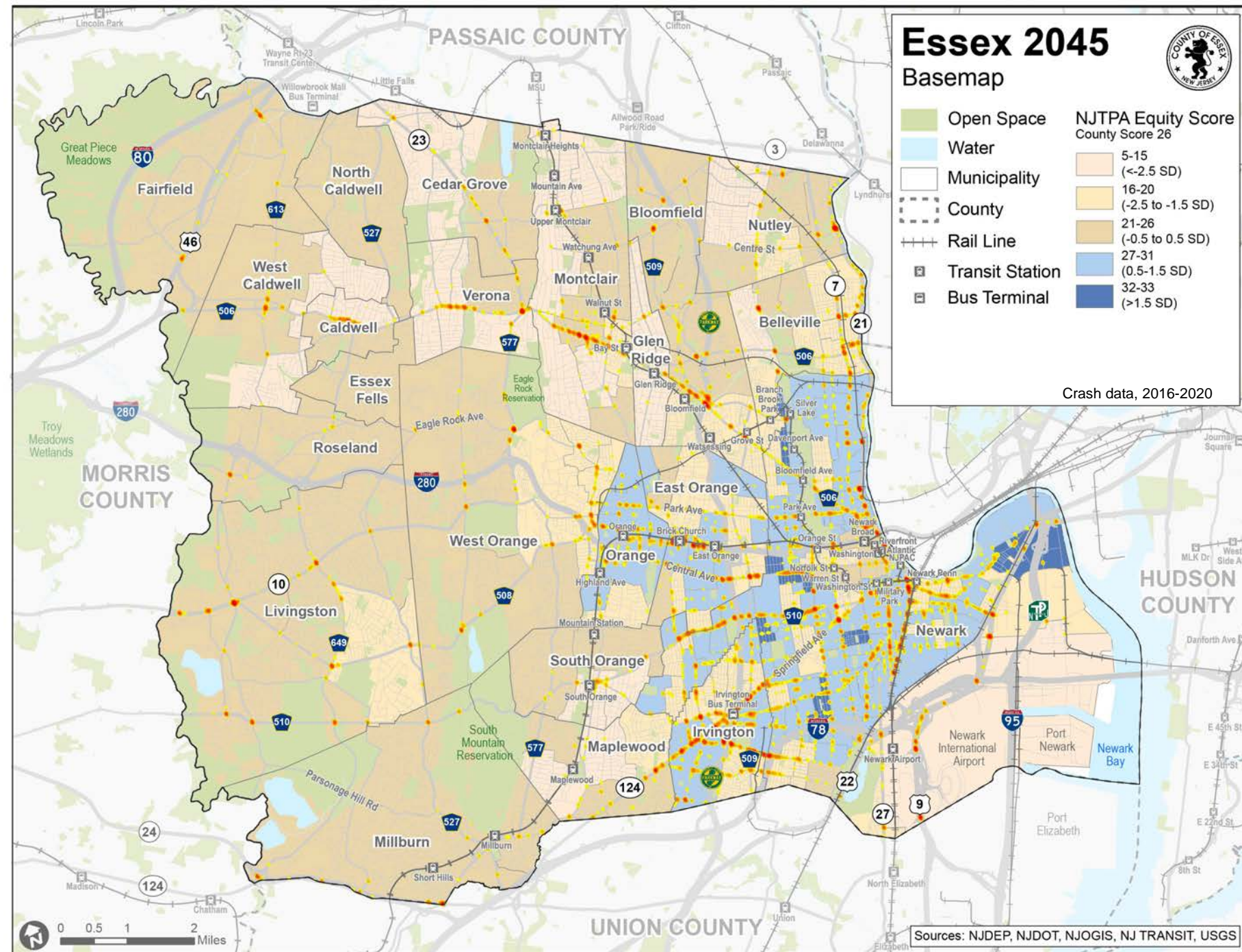
Ped Crashes: 4,153

Cyclist Crashes: 810

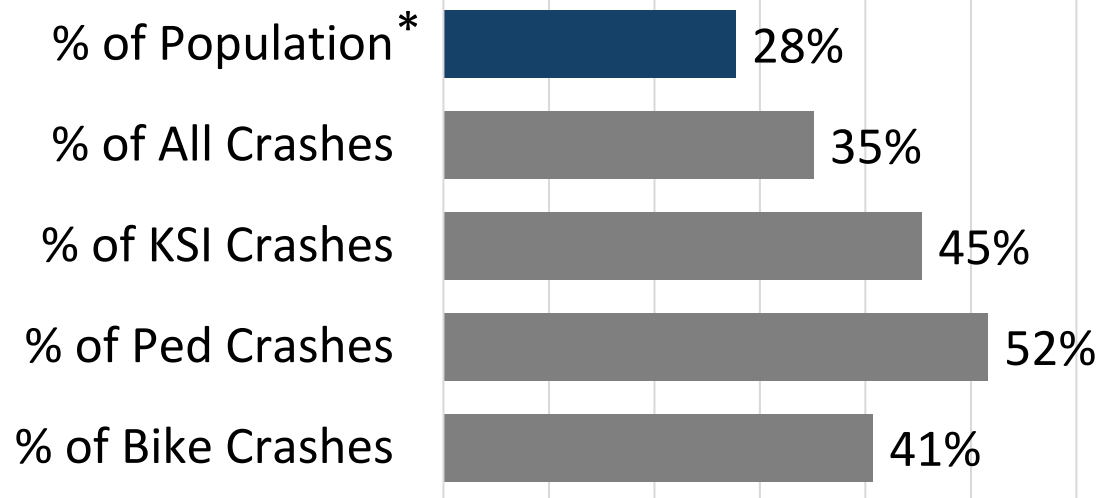


Priority Equity Areas

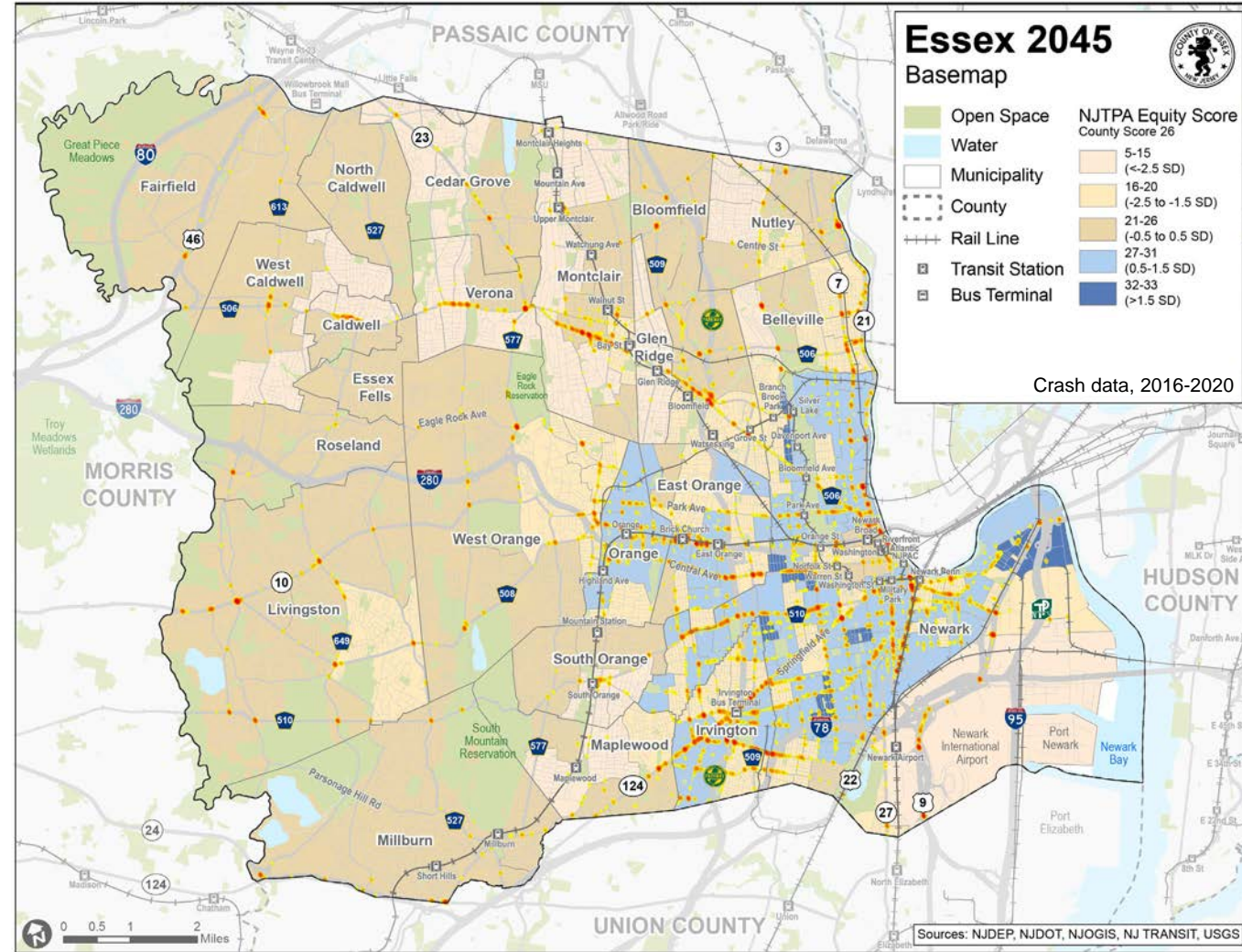
- Minority
- Low Income
- Carless Households
- LEP
- Foreign Born
- Seniors
- Disabled
- Children (<5)
- Children (5-17)
- Female HH Head



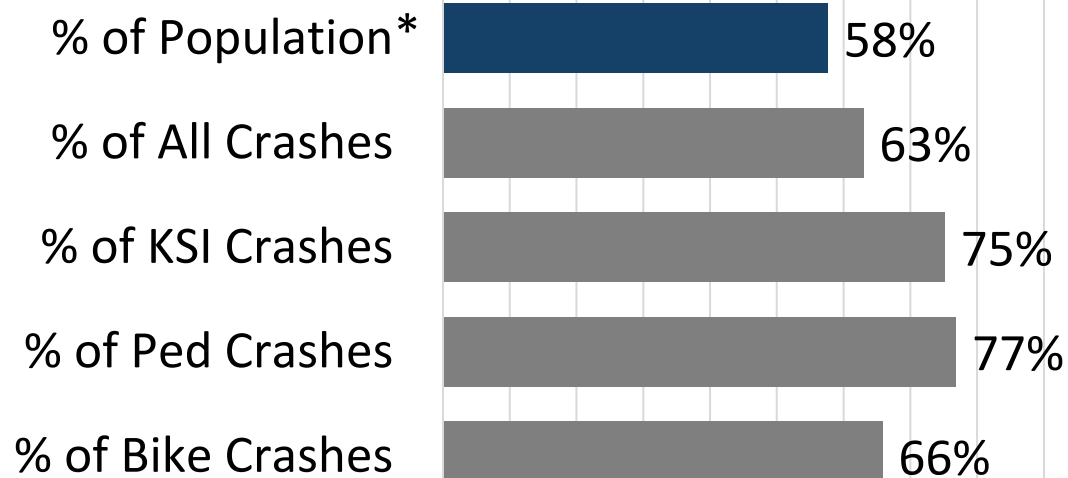
Priority Equity Areas



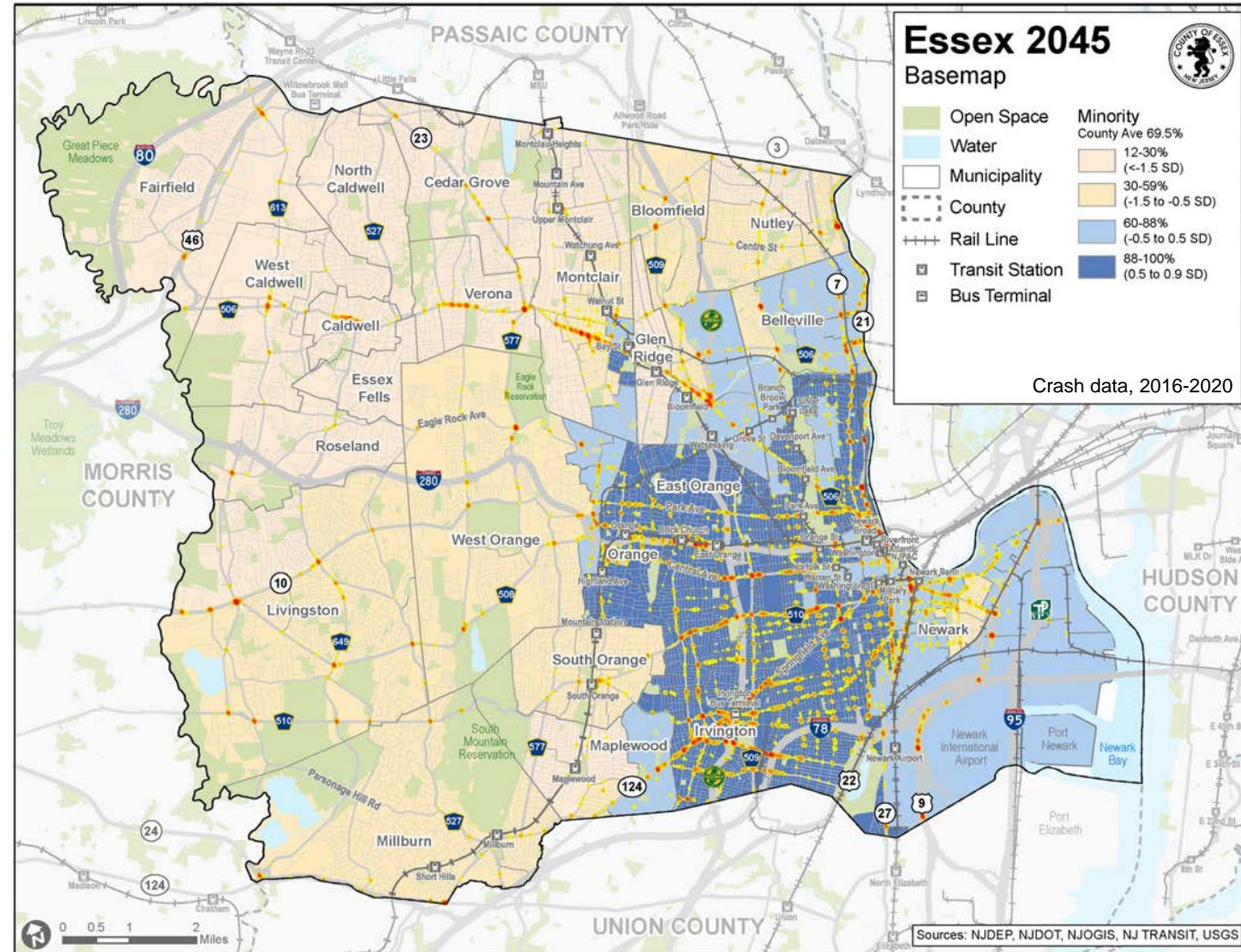
*Population within priority equity areas (shown in blue)



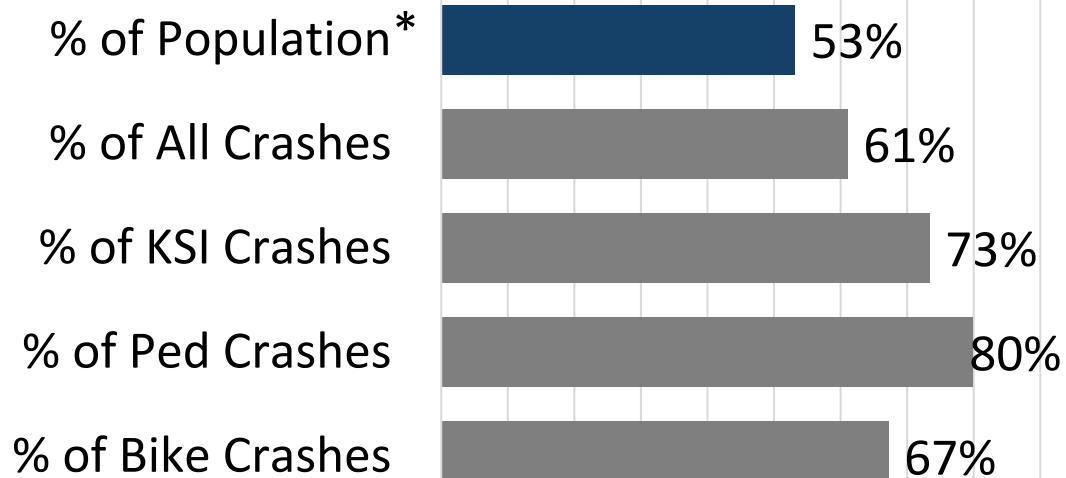
Minority Equity Areas



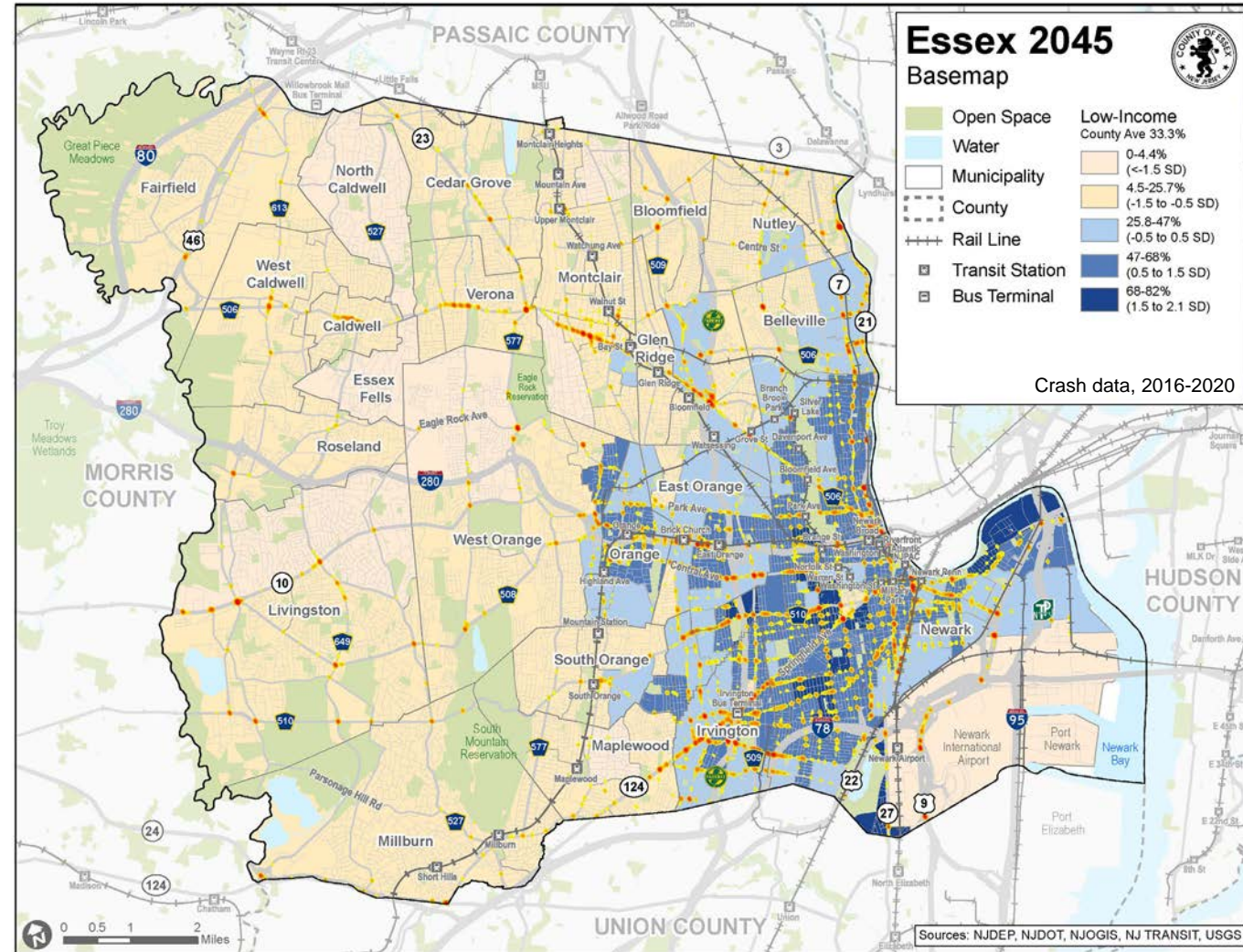
*Population within minority equity areas (shown in blue)



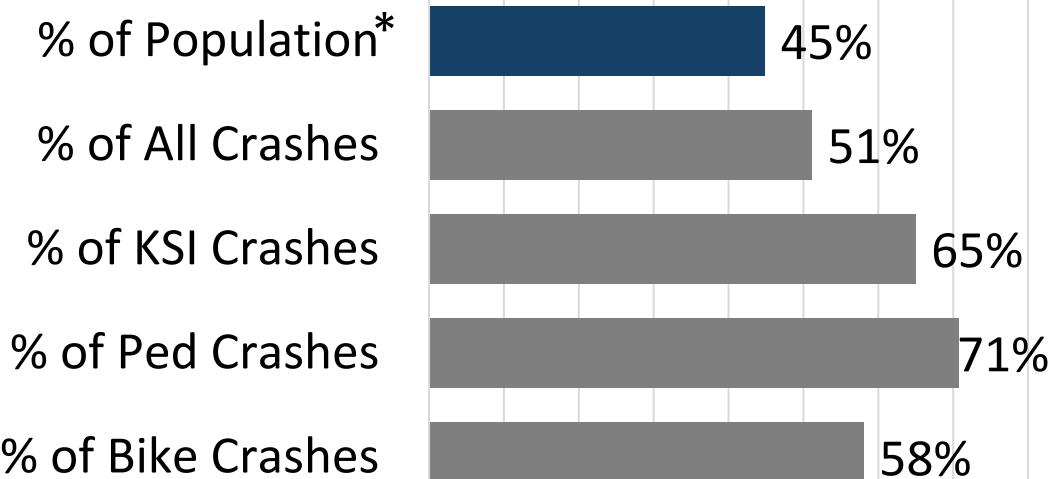
Low Income Equity Areas



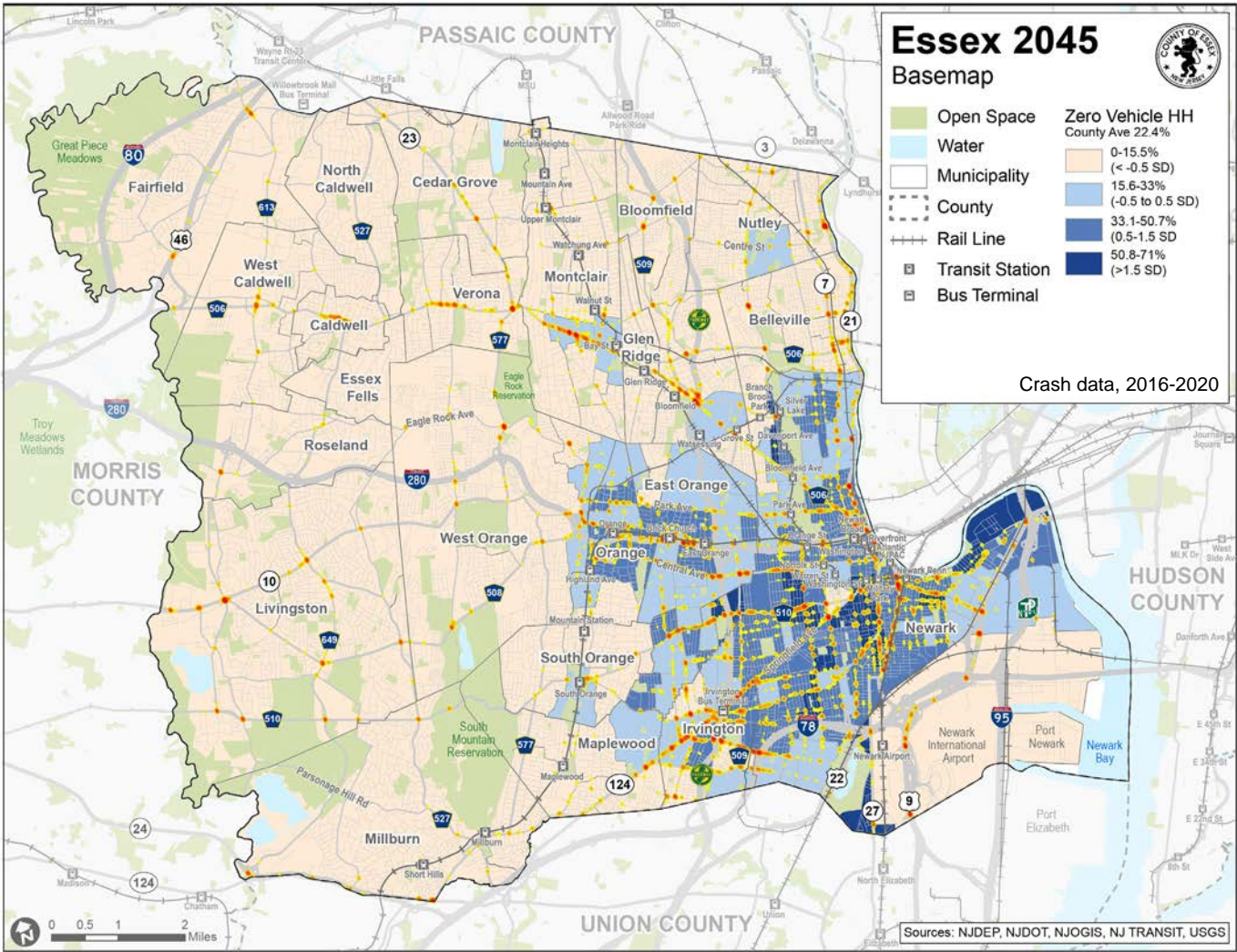
*Population within low-income equity areas (shown in blue)



Car-free Household Areas

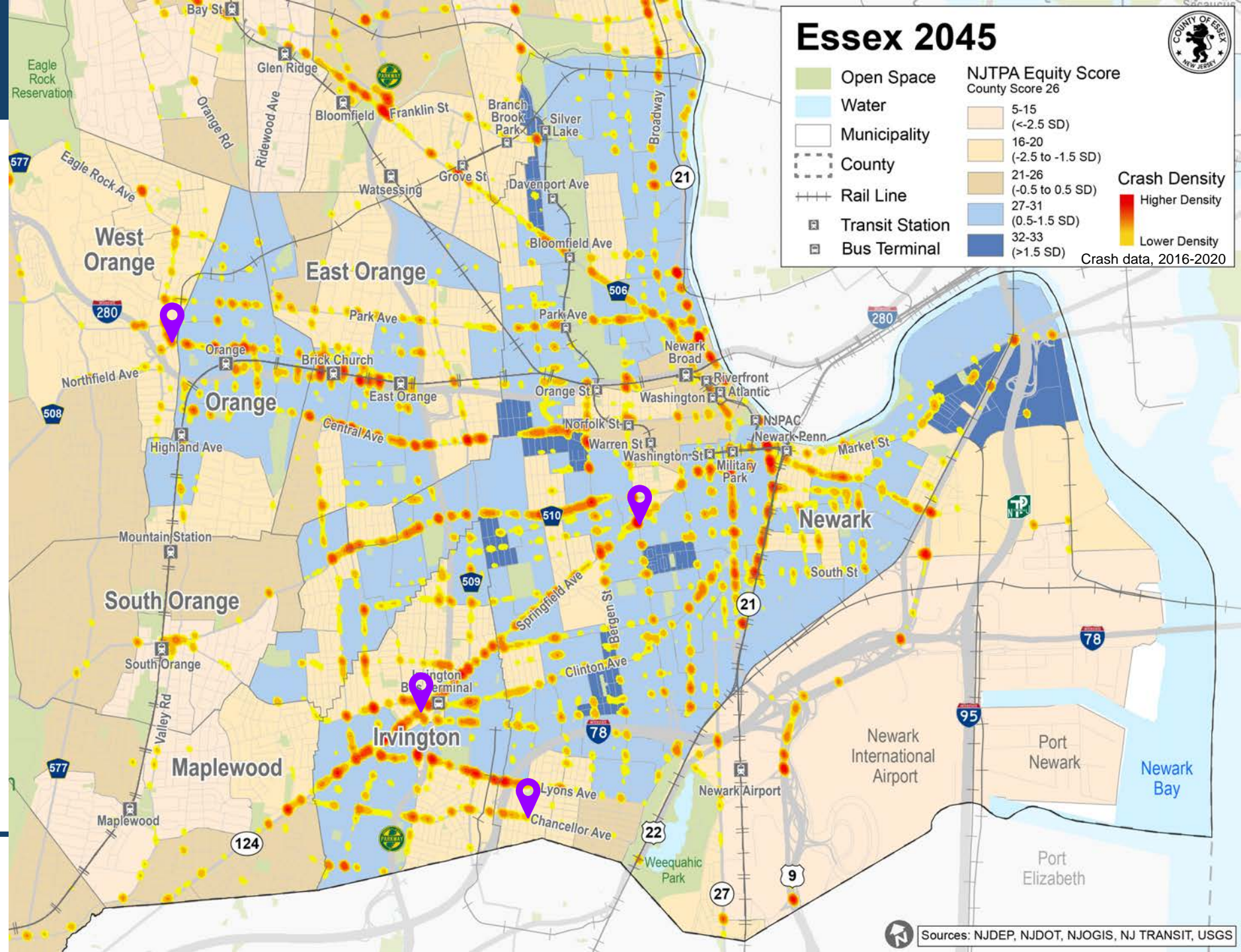


*Population within carless household areas (shown in blue)



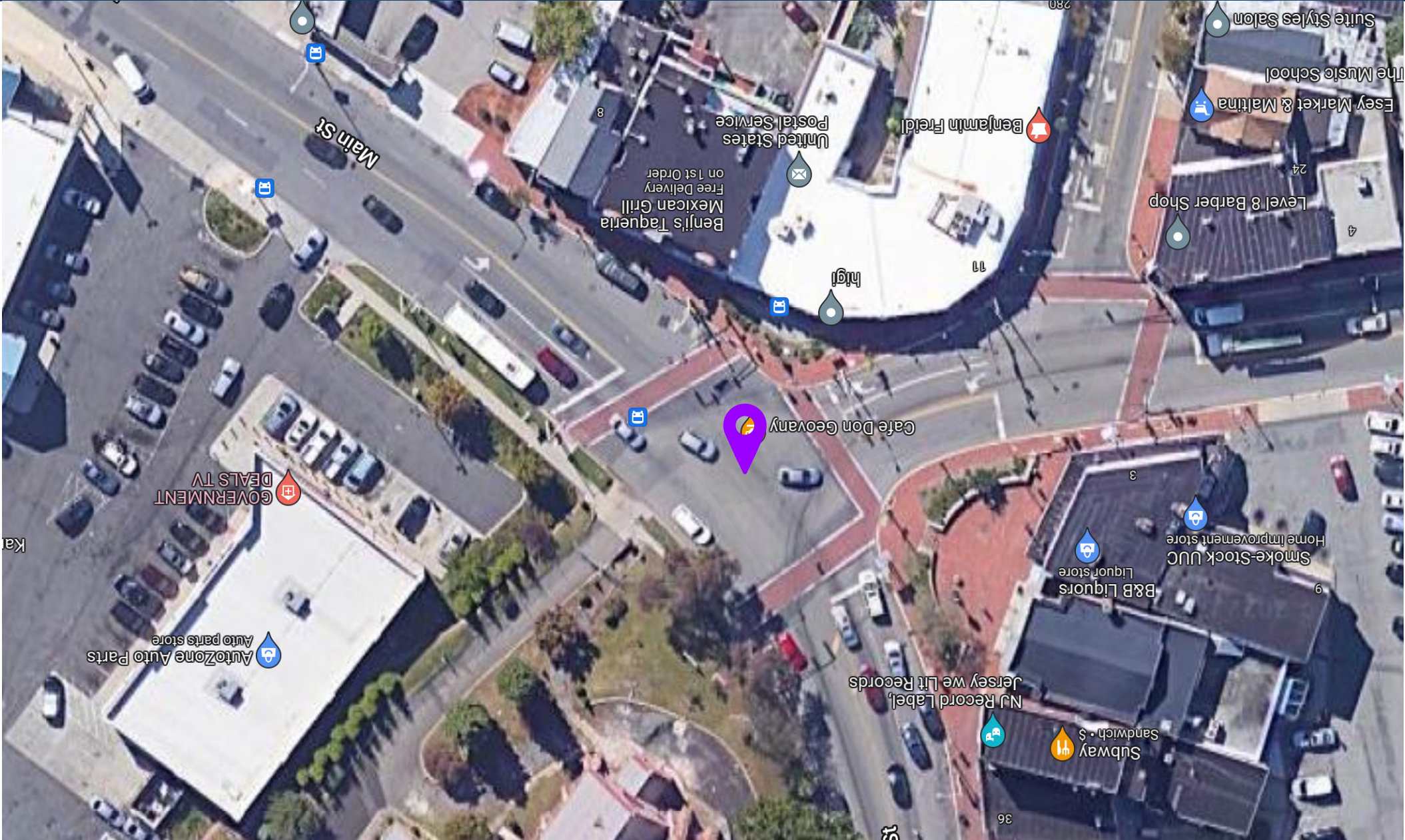
Pop-Up Locations

- West Orange
- Irvington
- Newark (2 options)



Sources: NJDEP, NJDOT, NJOGIS, NJ TRANSIT, USGS

West Orange



West Orange



West Orange



bioRxiv preprint doi: <https://doi.org/10.1101/2021.07.14.452111>; this version posted July 14, 2021. The copyright holder for this preprint (which was not certified by peer review) is the author/funder, who has granted bioRxiv a license to display the preprint in perpetuity. It is made available under aCC-BY-NC-ND 4.0 International license.

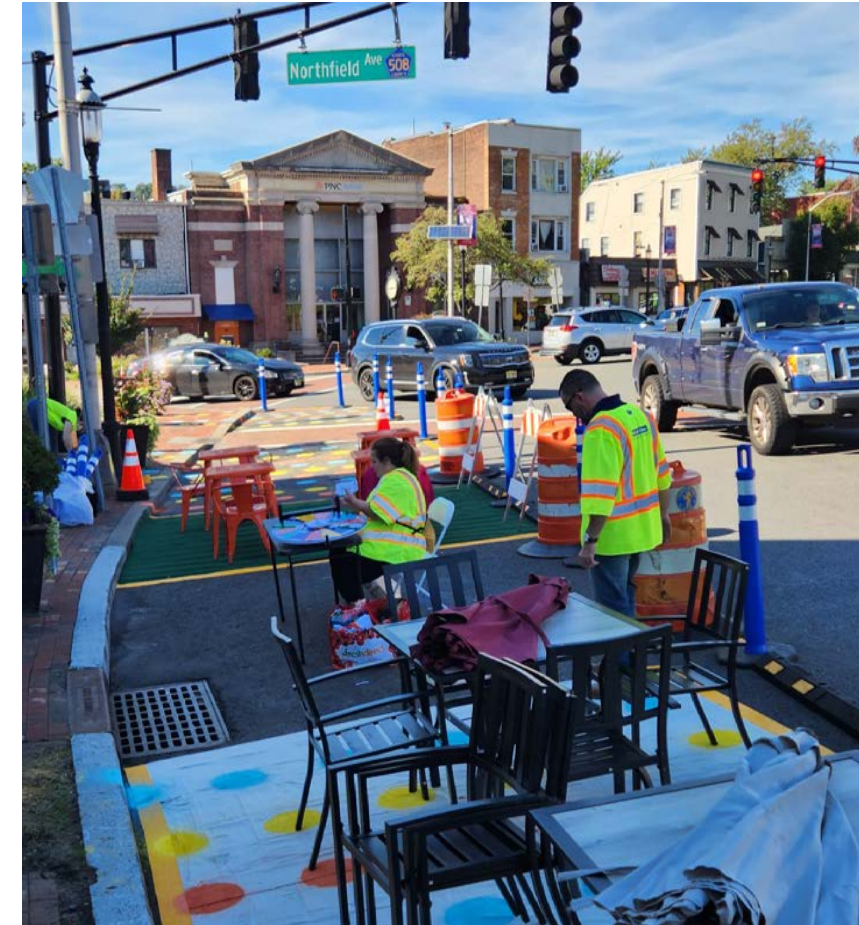


September 2022

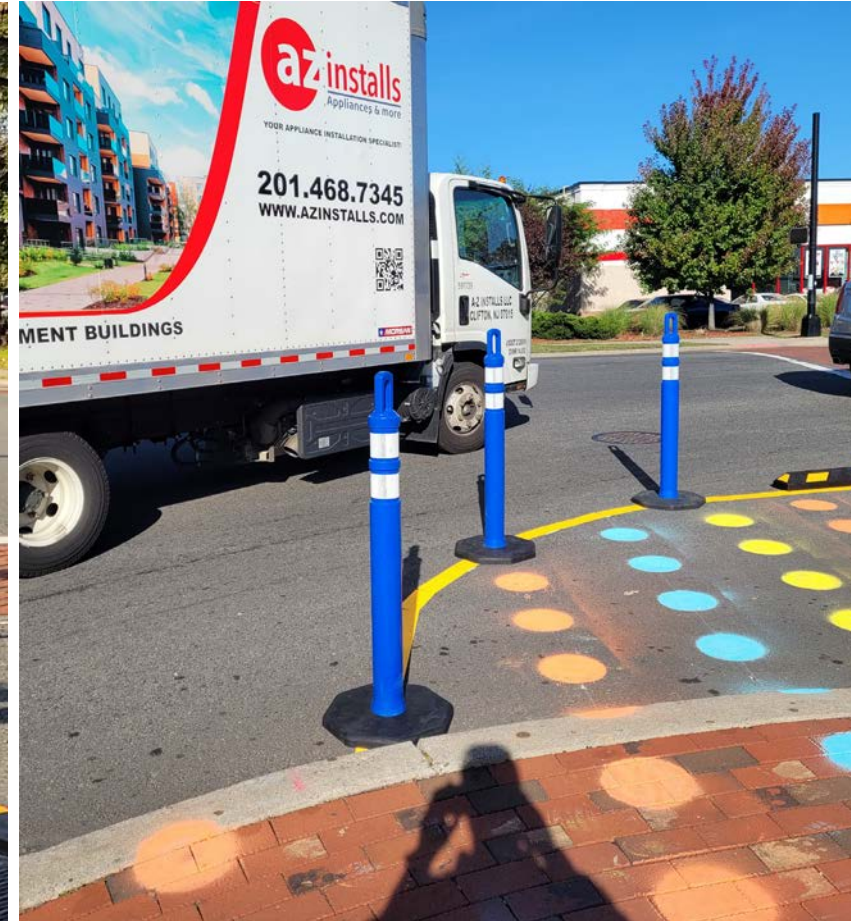
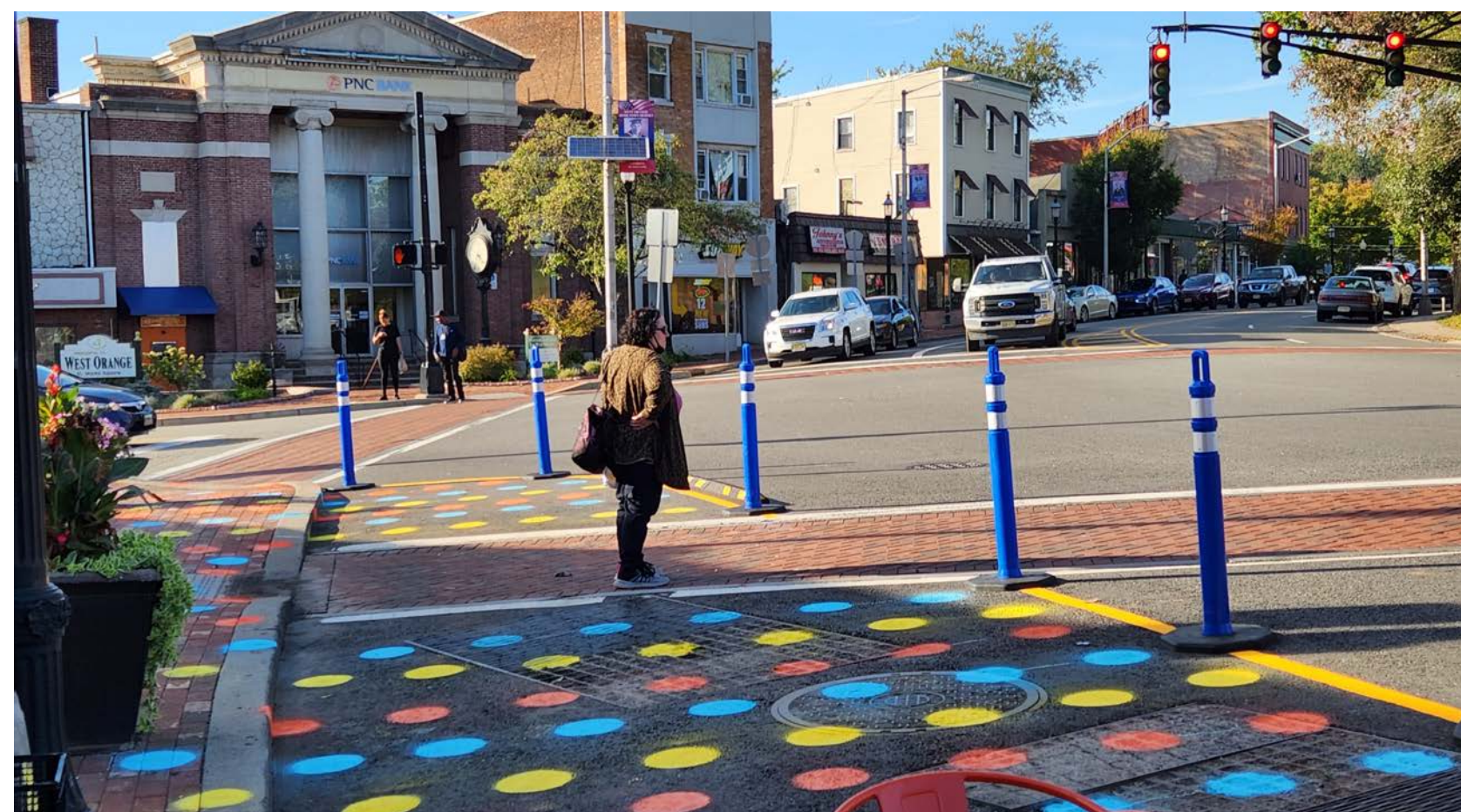
West Orange



West Orange



West Orange

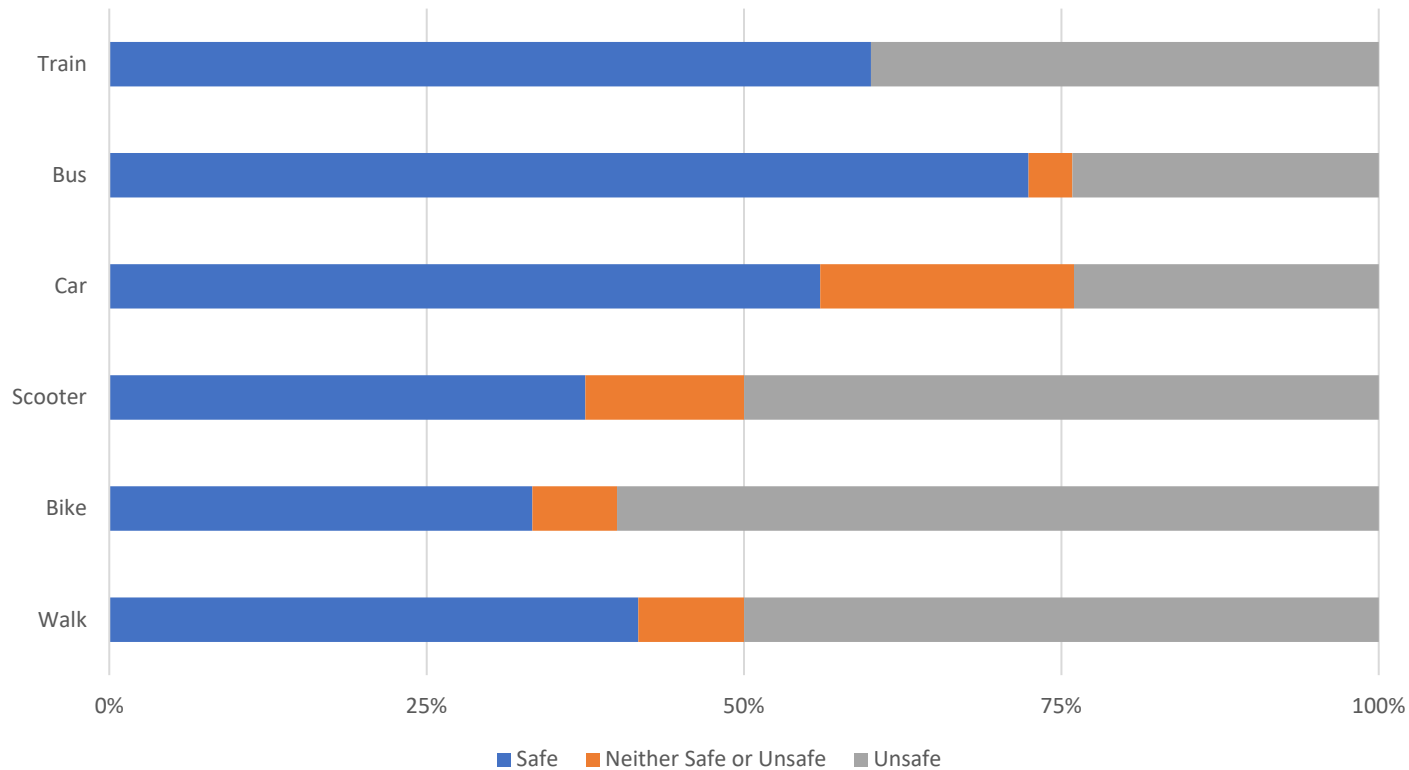


West Orange

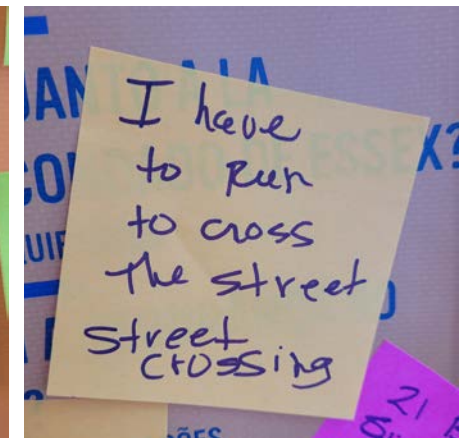
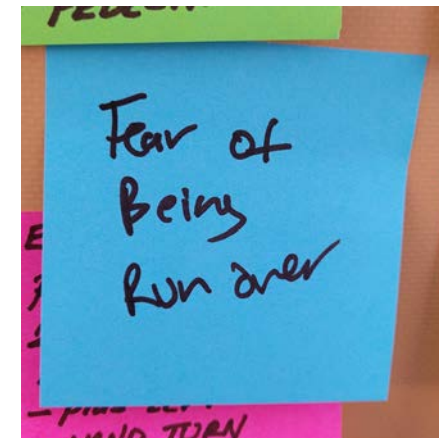


West Orange

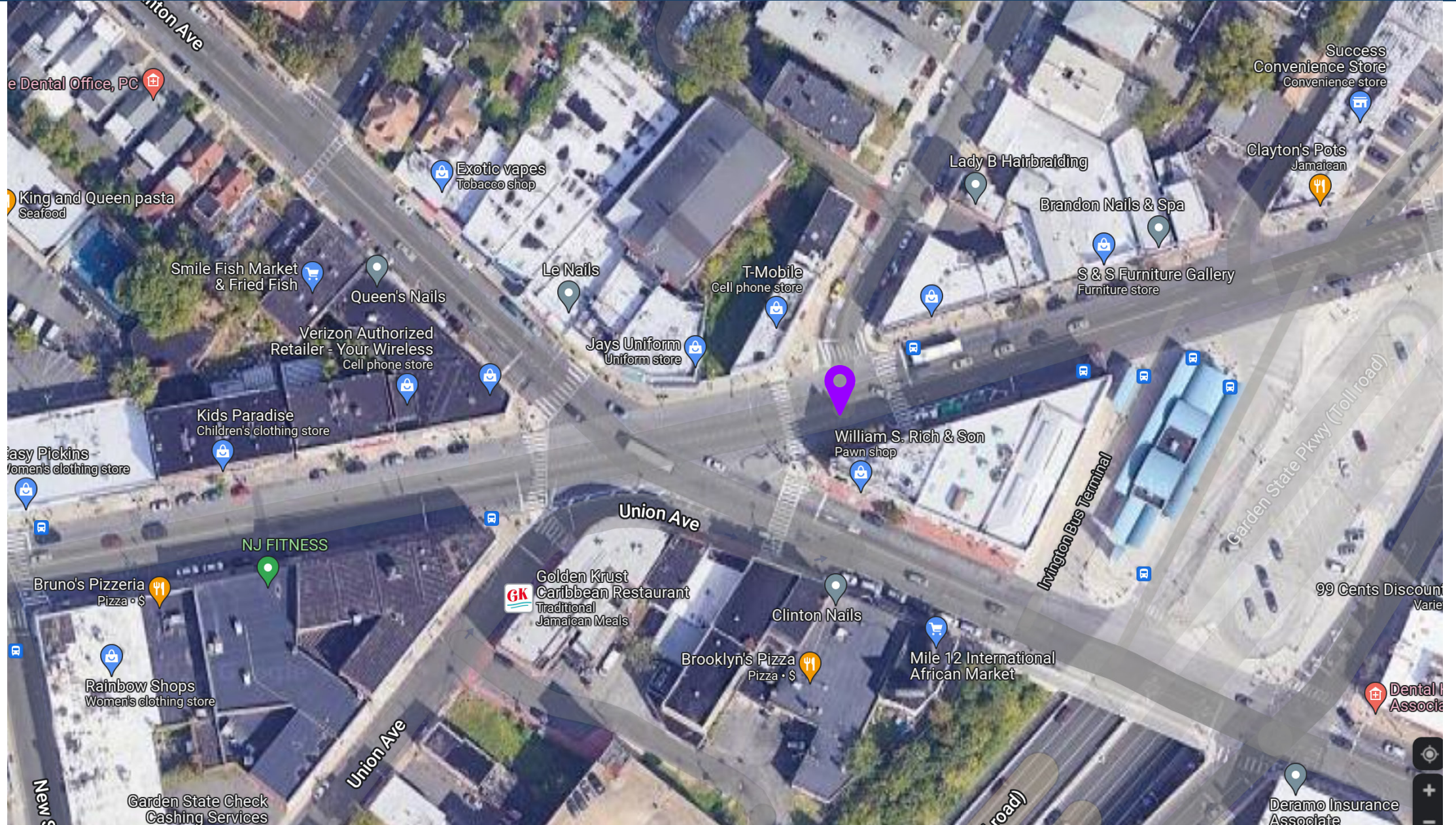
West Orange: How Safe Do You Feel?



- Drivers slowed down
- Diverse Stakeholders (largely Spanish-speaking)
- Demo made crossing feel safer
- Would like parklets to stay, particularly in warmer months



Irvington



Irvington



ESSEX2045



Notes:

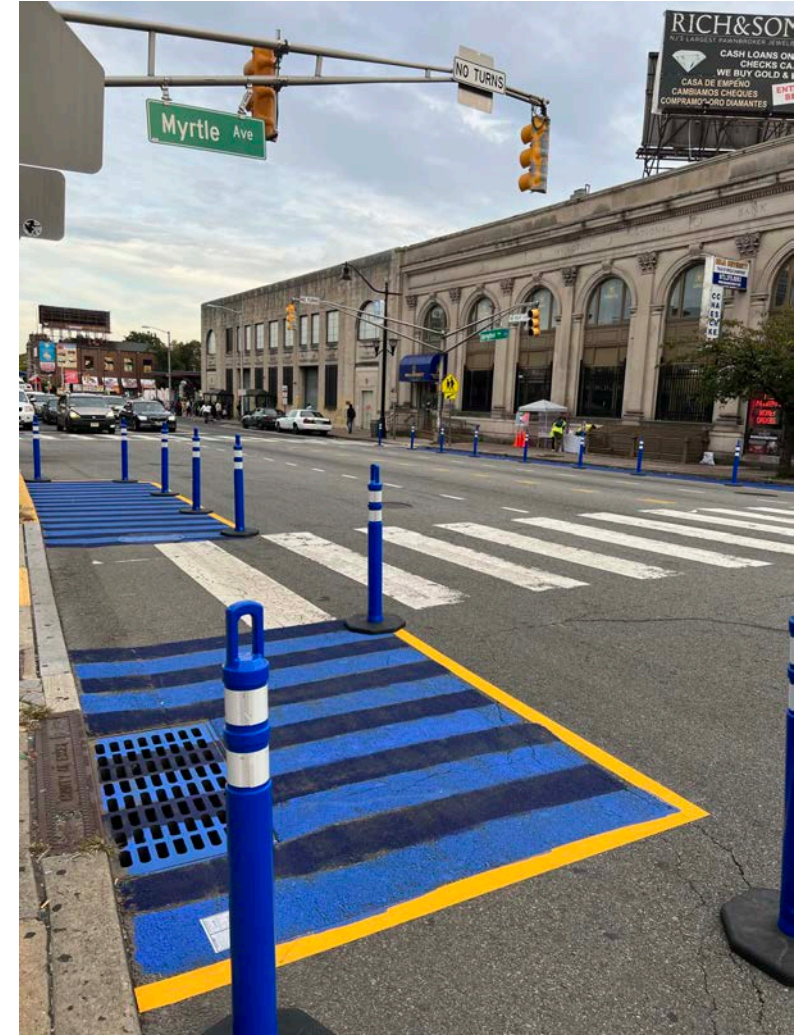
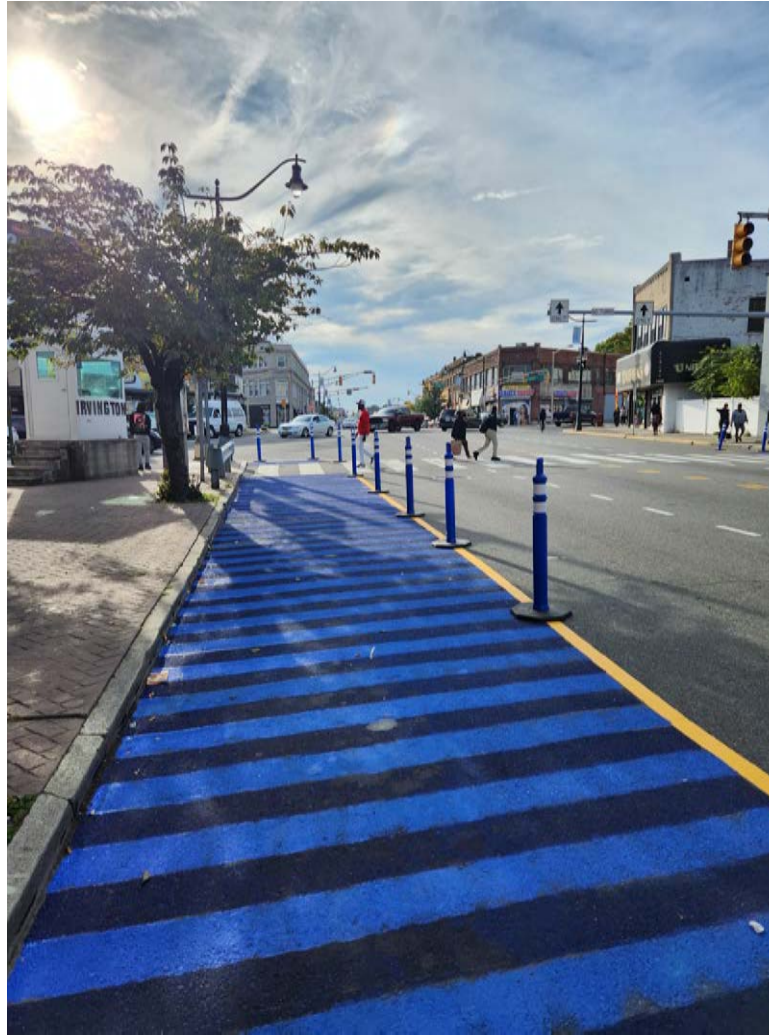
N.T.S.

DRAFT FOR DISCUSSION PURPOSES ONLY

September 2022



Irvington

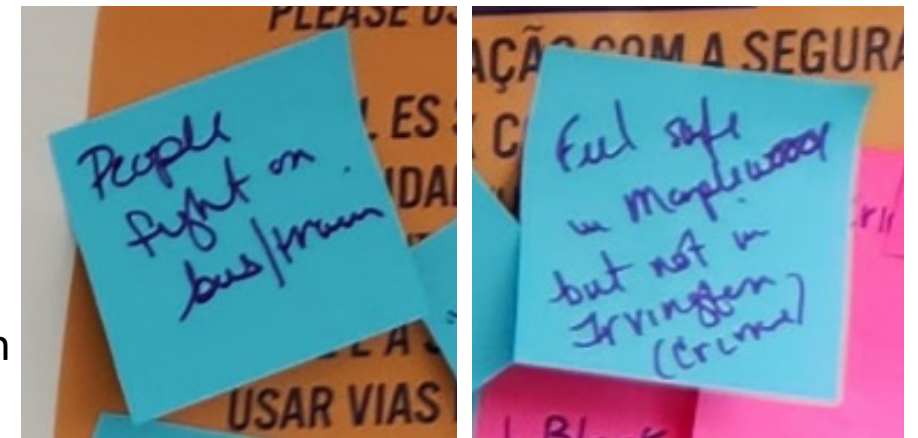
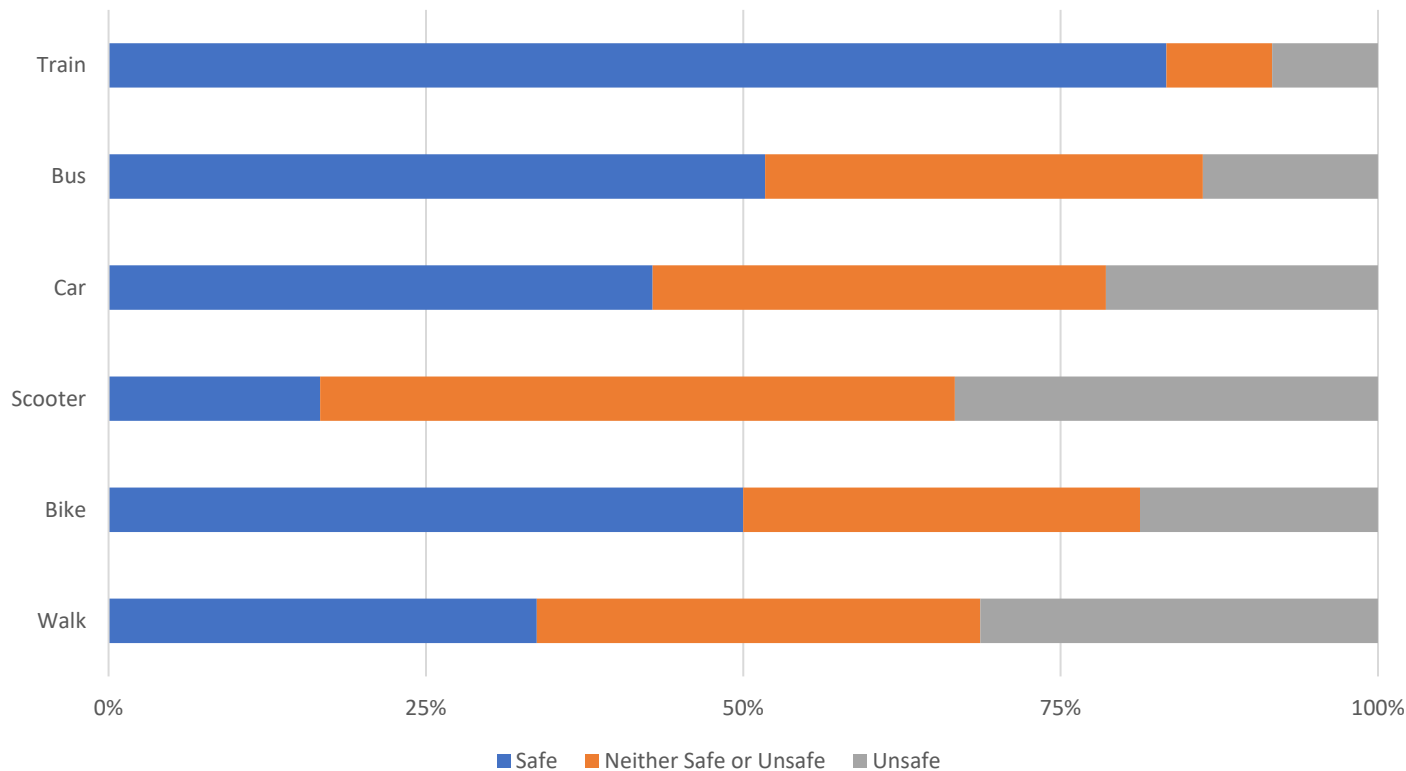


Irvington



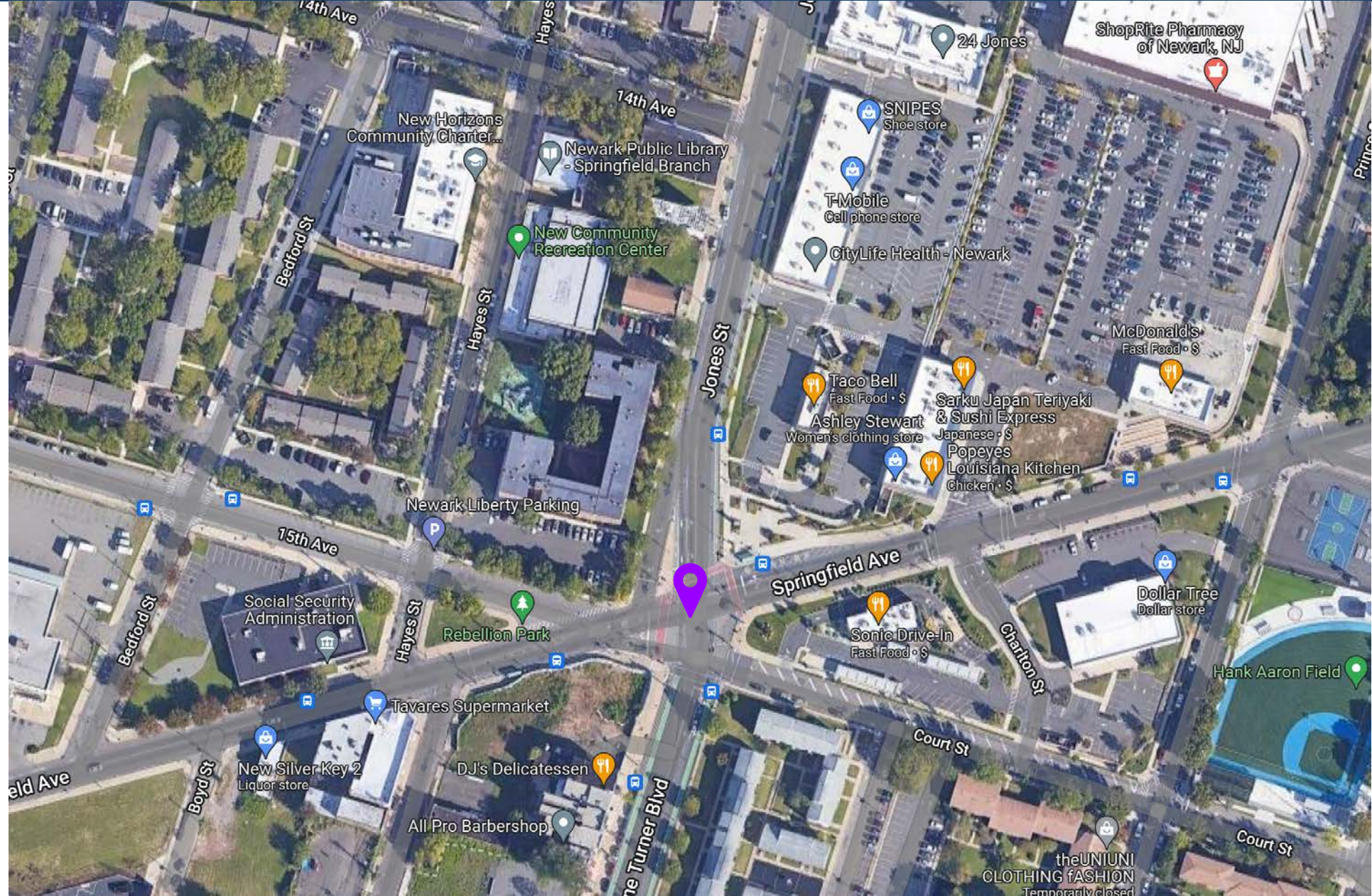
Irvington

Irvington: How Safe Do You Feel?

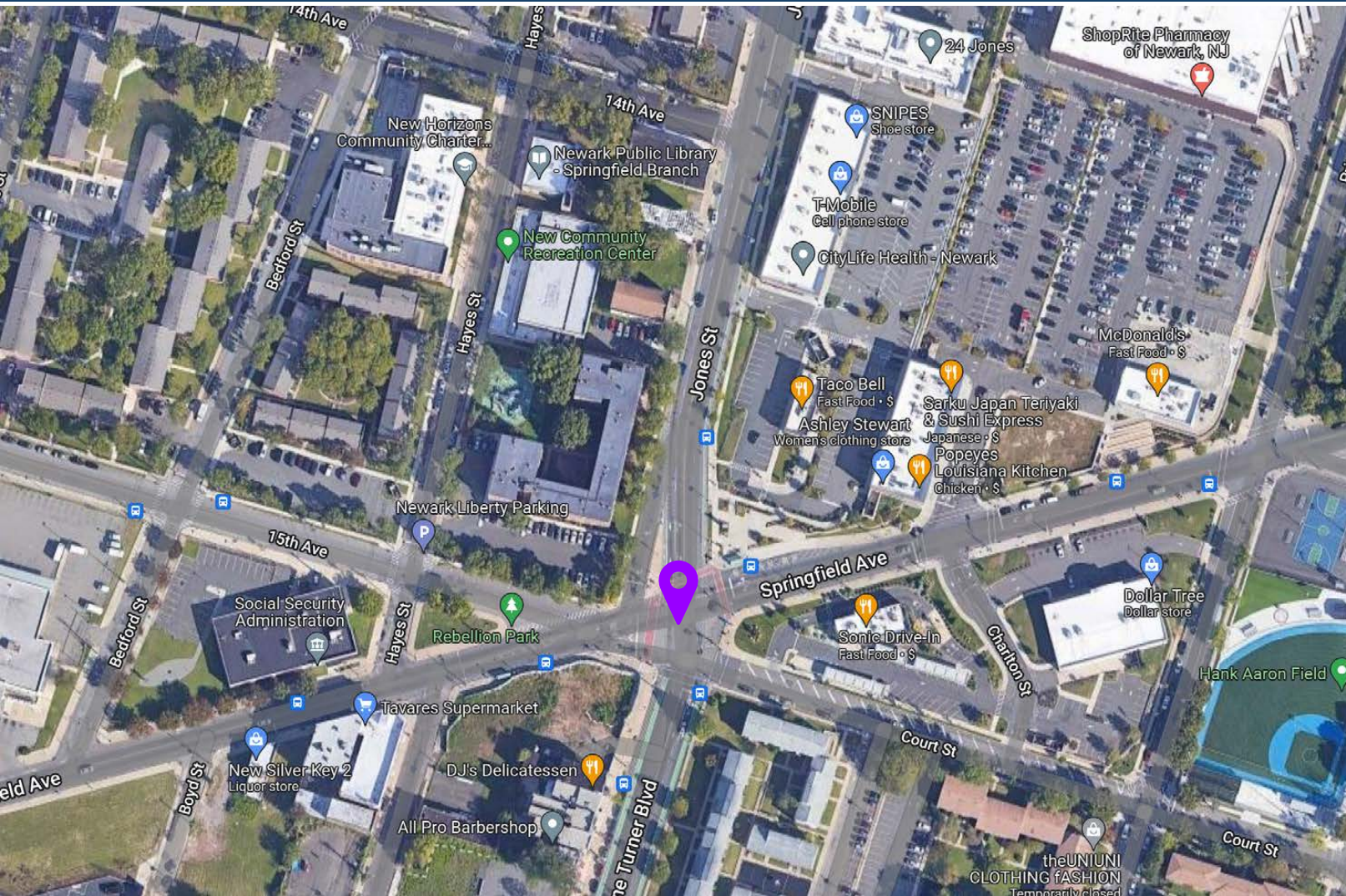


- Drivers did not slow
- Diverse stakeholders (black, Spanish & Haitian Creole-speaking)
- Surprised/happy demo in Irvington
- Concerns centered around personal safety

Newark Option 1



Newark Option 1



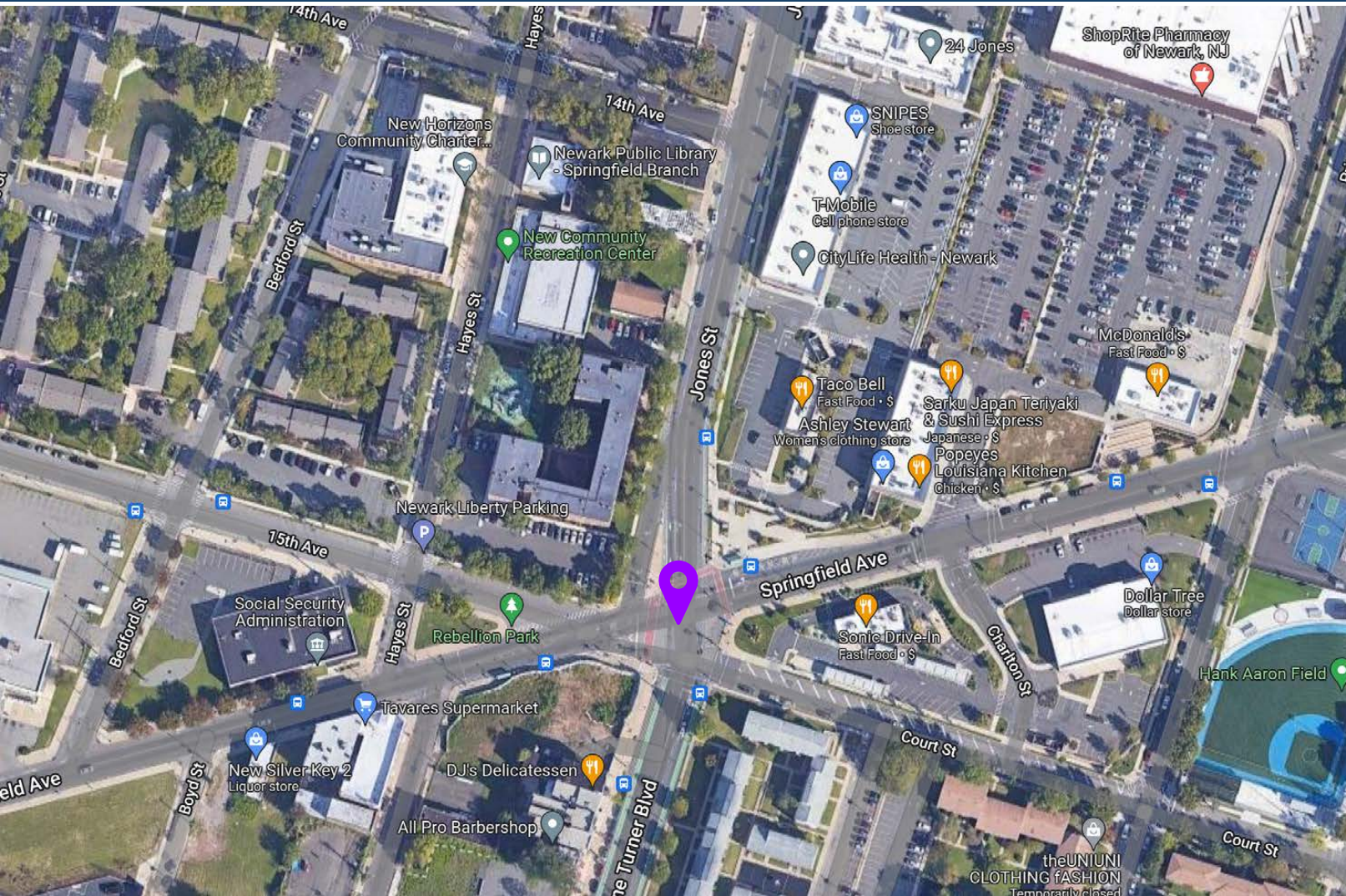
Newark Option 1



Newark Option 1



Newark Option 1



Newark: Option 2



ESSEX2045



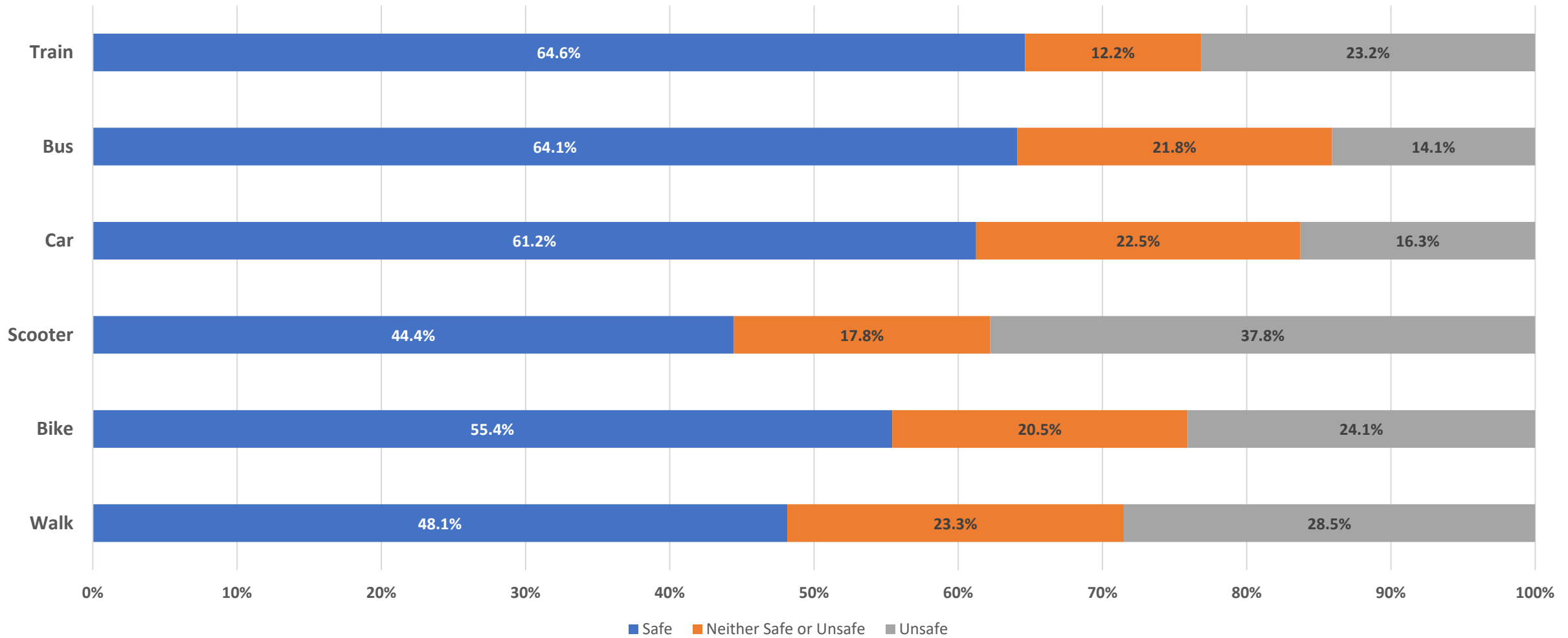
September 20 22



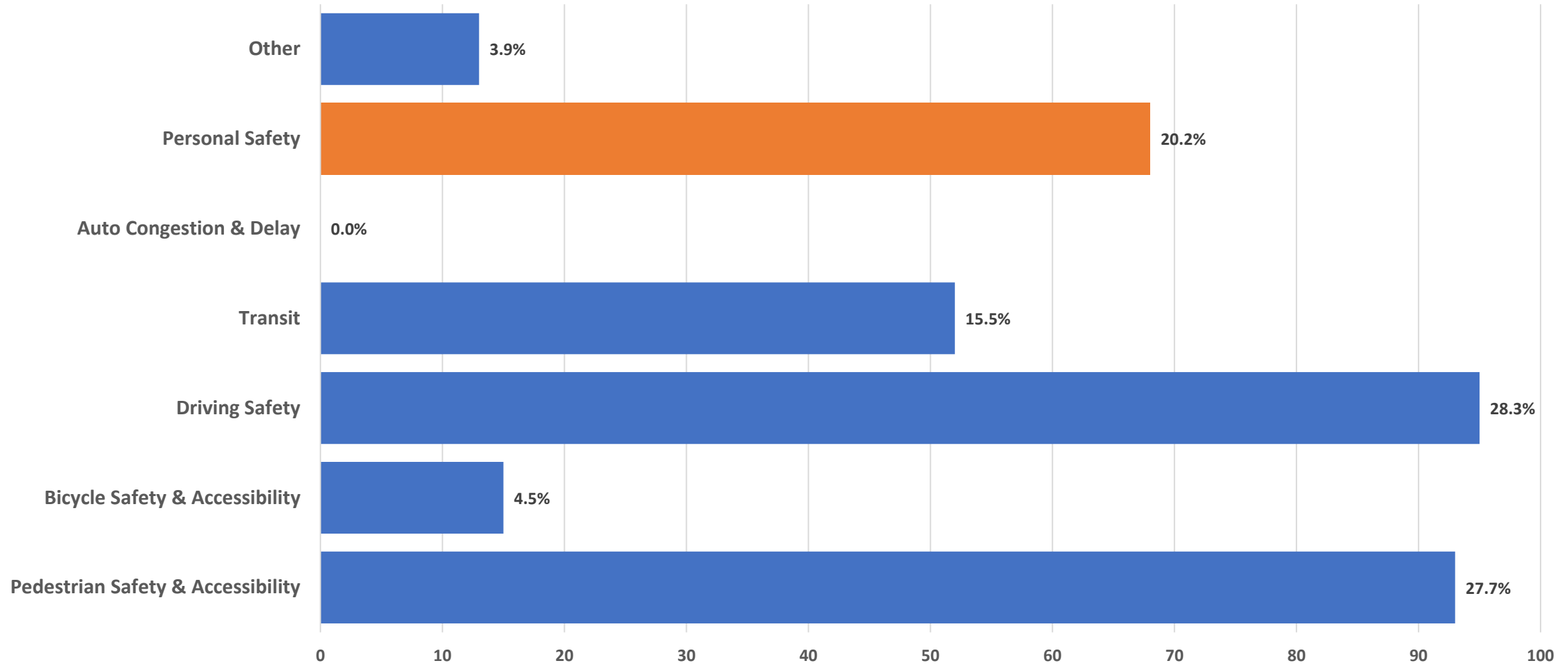
Safety Fairs: Orange & Newark



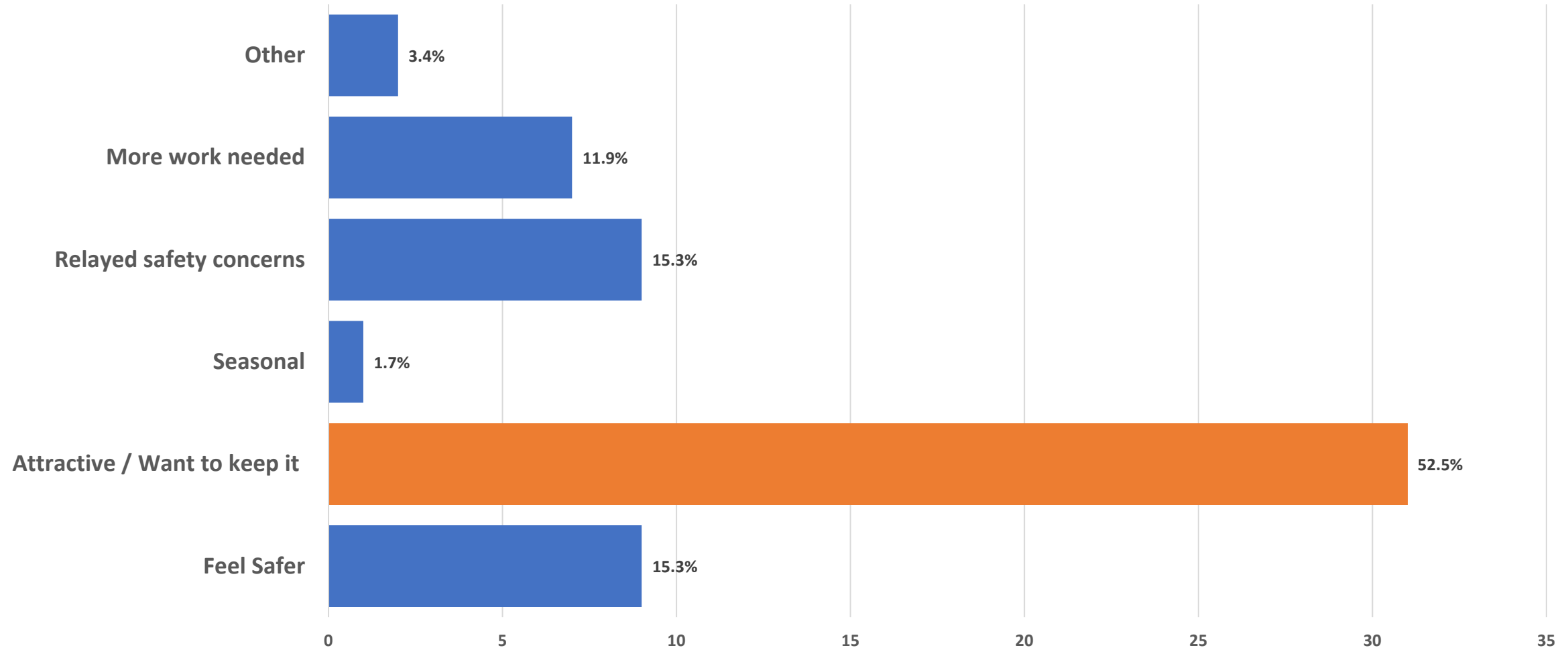
How safe do you feel?



Biggest Safety Concerns



Thoughts on the demonstration projects...



Overall Impressions

- Overall positive feedback to tactical urbanism demos - would like to see permanent installations
- Many surprised/happy to see something happening in their “overlooked” community – emphasizing the need to prioritize interventions in priority-equity communities
- Personal safety a large concern – emphasizing the need for CPTED interventions

