

# Hudson County Vision ZERO



Francesca Giarratana, AICP, PP, Deputy Director  
2026 NJ Complete Streets Summit- April 21, 2026  
Advancing Transit-Ready Communities

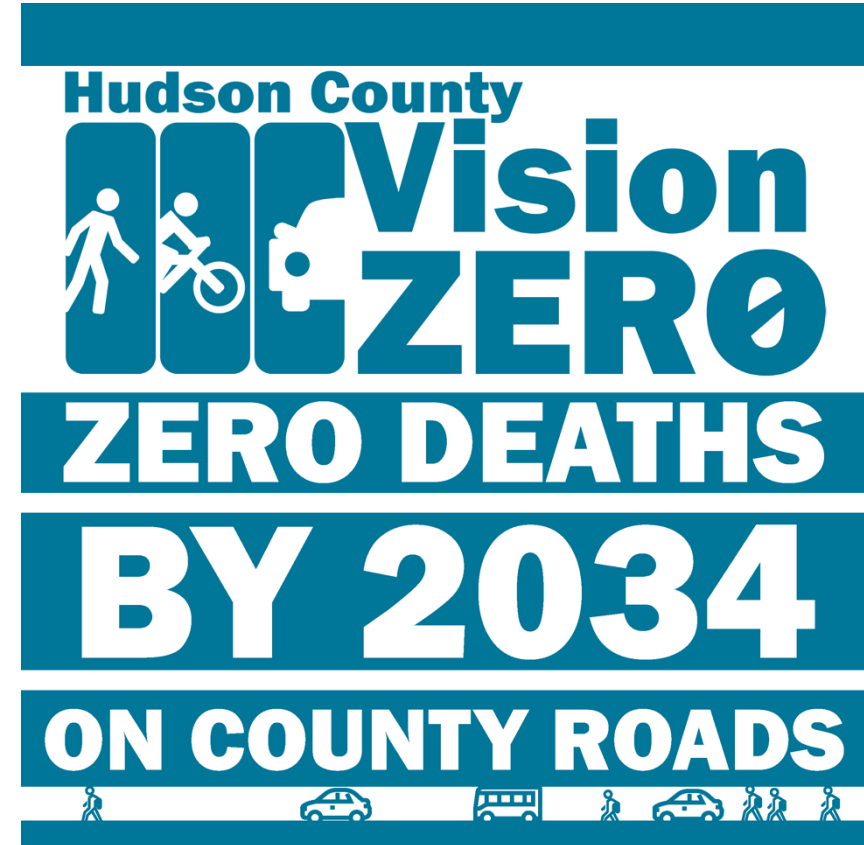


**CRAIG GUY** *Craig Guy*  
COUNTY EXECUTIVE

& The Board of County Commissioners

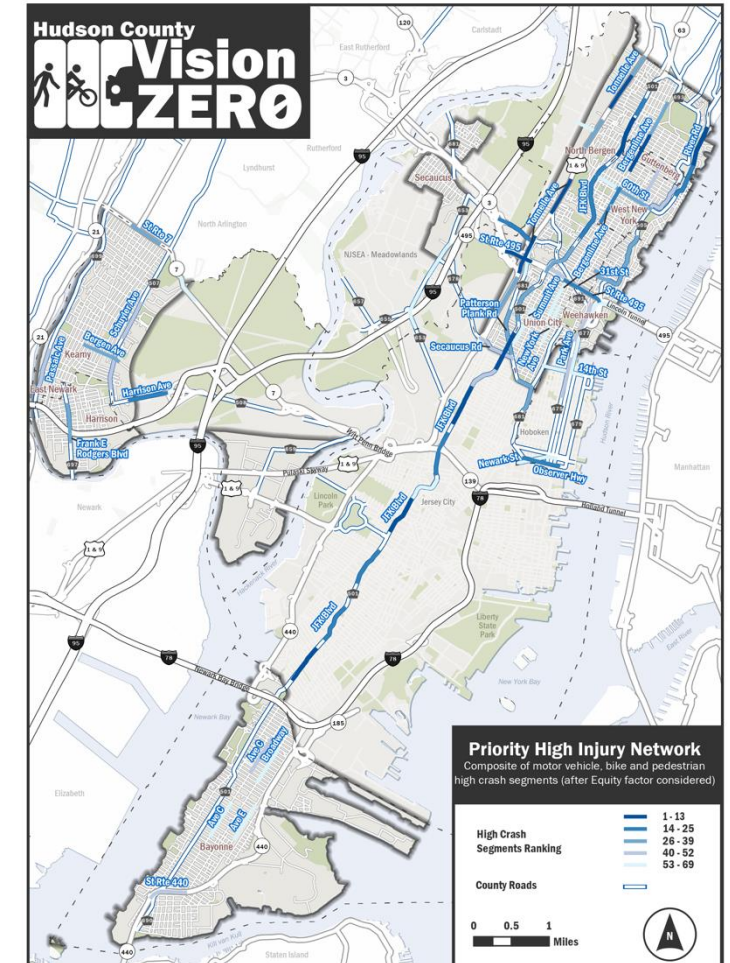
# Overview

1. Hudson County Vision Zero Safety Action Plan
2. Public Feedback
3. Corridor Recommendations
4. Action Item Highlights - to enhance station access and first- and last-mile connectivity
5. Continuing Efforts + Upcoming Projects



# Hudson County Vision Zero Safety Action Plan

- Executive Order / Creation of the Task Force – August 2023
- Plan funded by Safe Streets for All (SS4A) grant and completed in 2024
- Scope
  - All County Roads
  - Local Roads – excluding:
    - Jersey City and Hoboken (already have VZ initiatives)
    - Meadowlands District (working on VZ initiative)
  - US Highways & Interstates are excluded – Except Tonelle Ave
  - Plan and Target date introduced in January 2025 + adopted in March by County Commissioners



# Some Process Highlights

- **Pop-up Events**
  - 14 dates all over Hudson County
- **Demonstration Project**
  - September 7<sup>th</sup> kickoff - public interaction and feedback
  - In place for 2 weeks
  - Assistance for NJTPA Complete Streets Demonstration Library
- **Municipal Technical Assistance**
  - Buy-in from our municipal partners



# Outreach Feedback

## THEME 4 - ENHANCE TRANSIT AND ACTIVE TRANSPORTATION



Community members were generally supportive of the actions proposed for Theme 4, with a particular focus on coordination and partnership with transportation authorities, increased studies, and enhanced public transportation. Key themes from the feedback included interest in implementing Bus Rapid Transit along John F. Kennedy Blvd and connecting public transportation to NJ Transit, PATH, and other transportation options through partnerships with transportation authorities. Participants also emphasized the importance of improving bus stops, including the addition of seating, bike racks, and shelters. Additionally, many community members expressed a desire for more cycling infrastructure and education, along with various suggestions for infrastructure improvement projects.

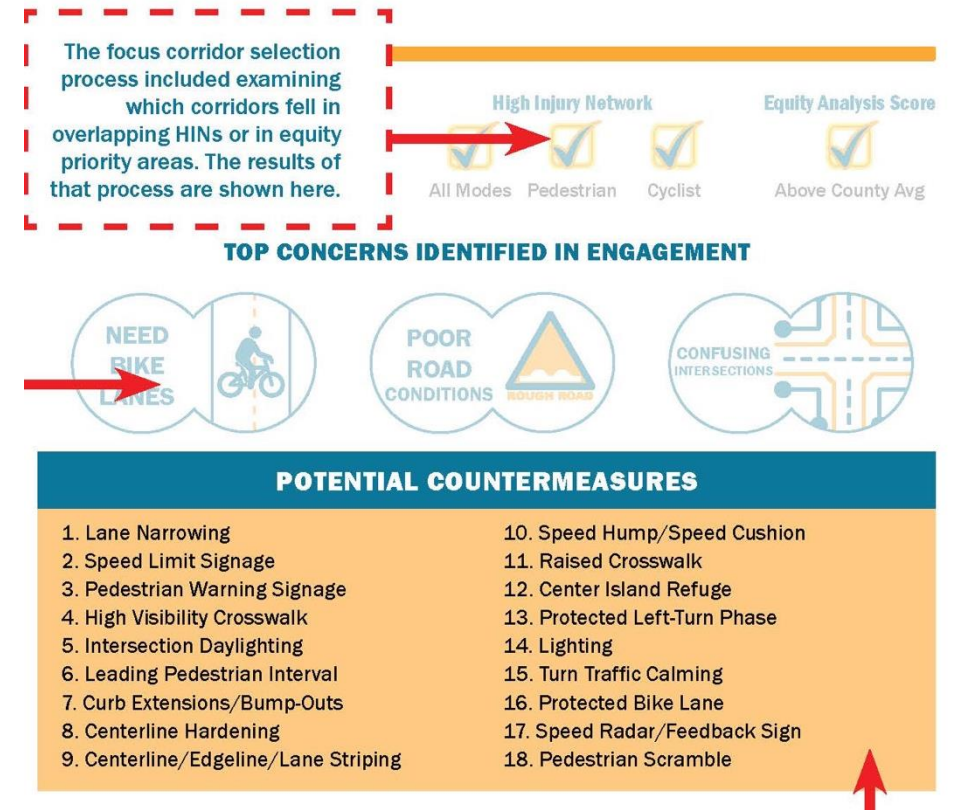


# Corridor Recommendations

Frank E. Rodgers Blvd. –  
Harrison PATH Station

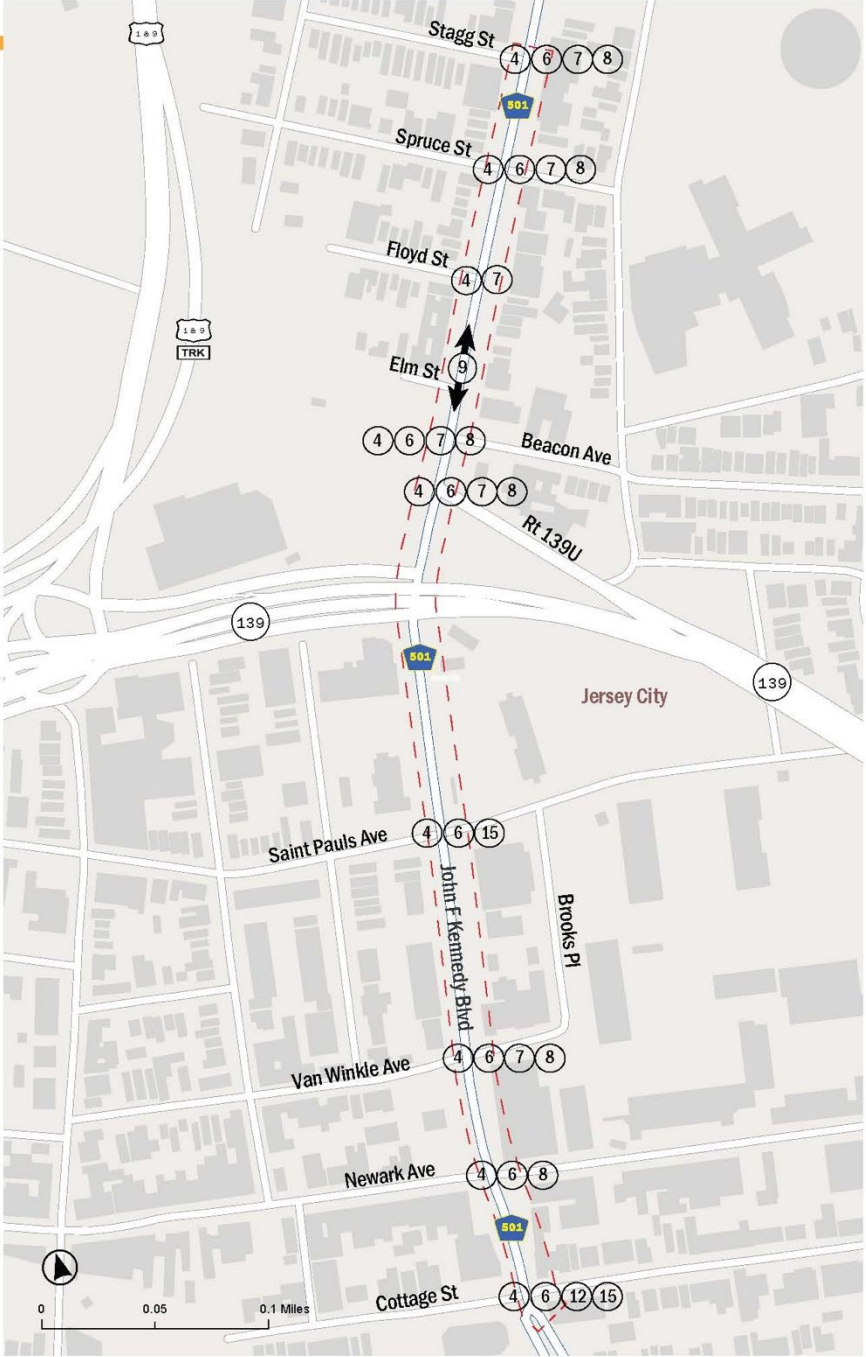
JFK Boulevard- Journal Square

Broadway (Bayonne)- 45<sup>th</sup>  
Street and 34<sup>th</sup> HBLR Stations



# Harrison PATH Station

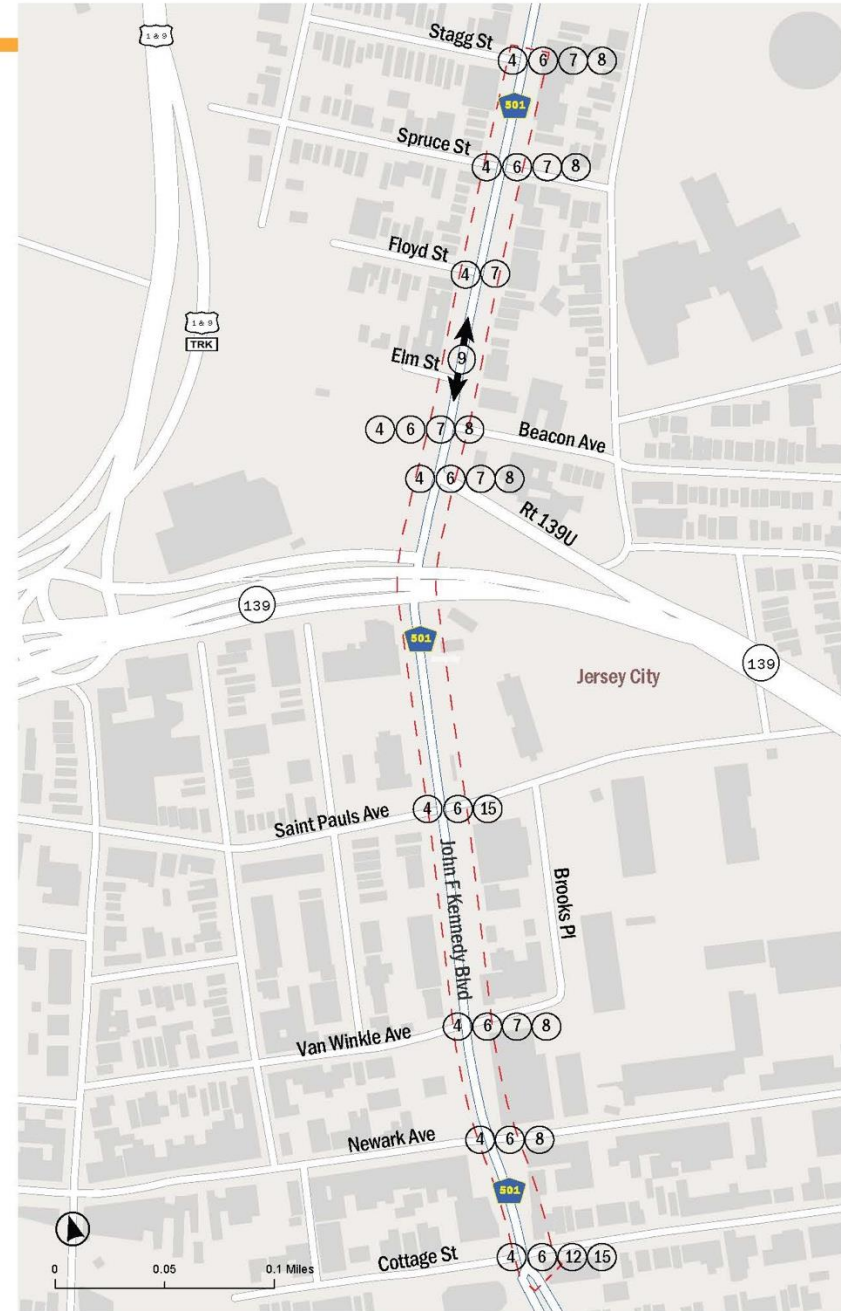
Via Frank E. Rodgers  
Blvd. (County Road)



# Journal Square (JSQ) in Jersey City

Via JFK Boulevard  
(County Road)

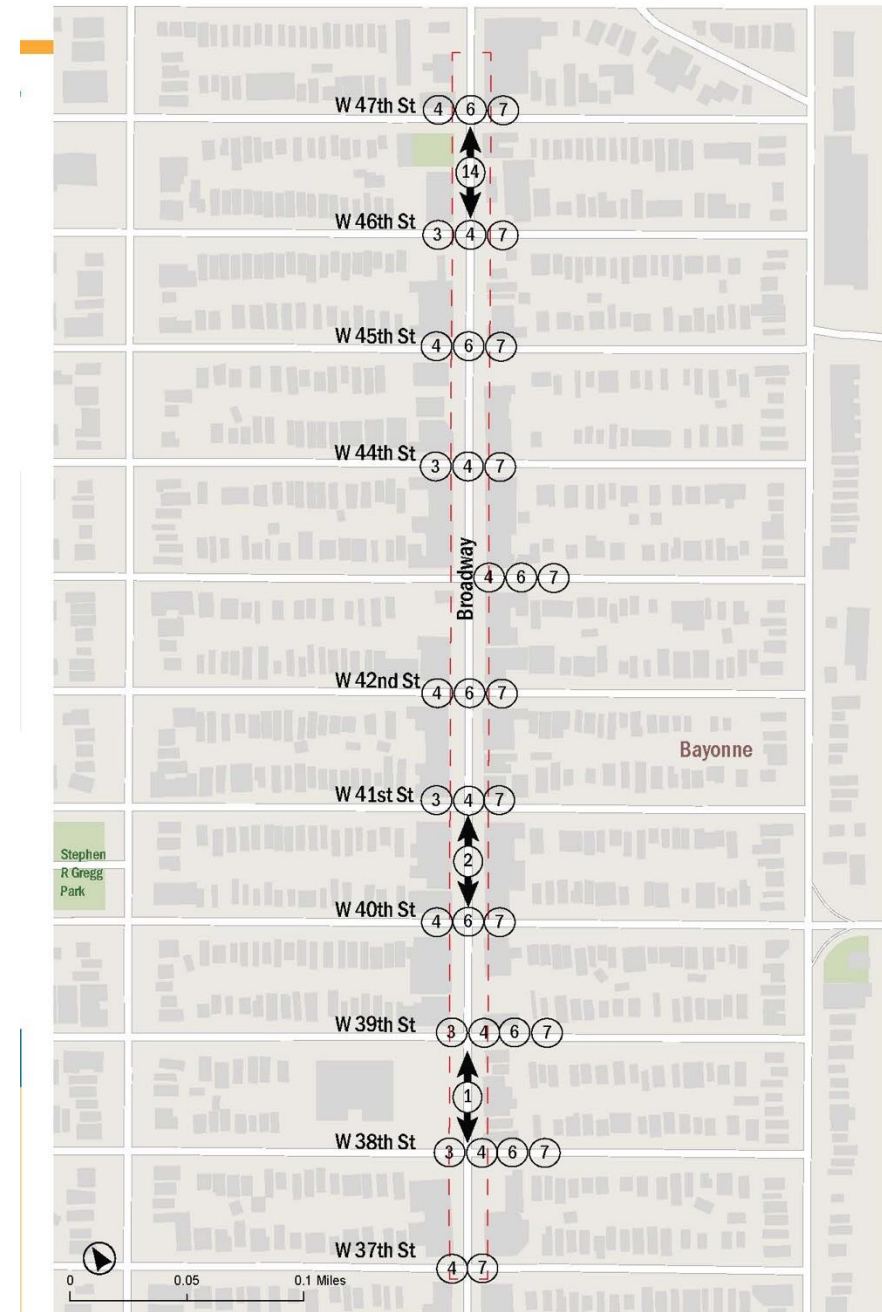
Heights neighborhood  
access to Transit Hub



# Bayonne HBLR Stations

Via Broadway (Local  
Street/Commercial  
Corridor)

2 stations- 34<sup>th</sup> and  
45<sup>th</sup> Street

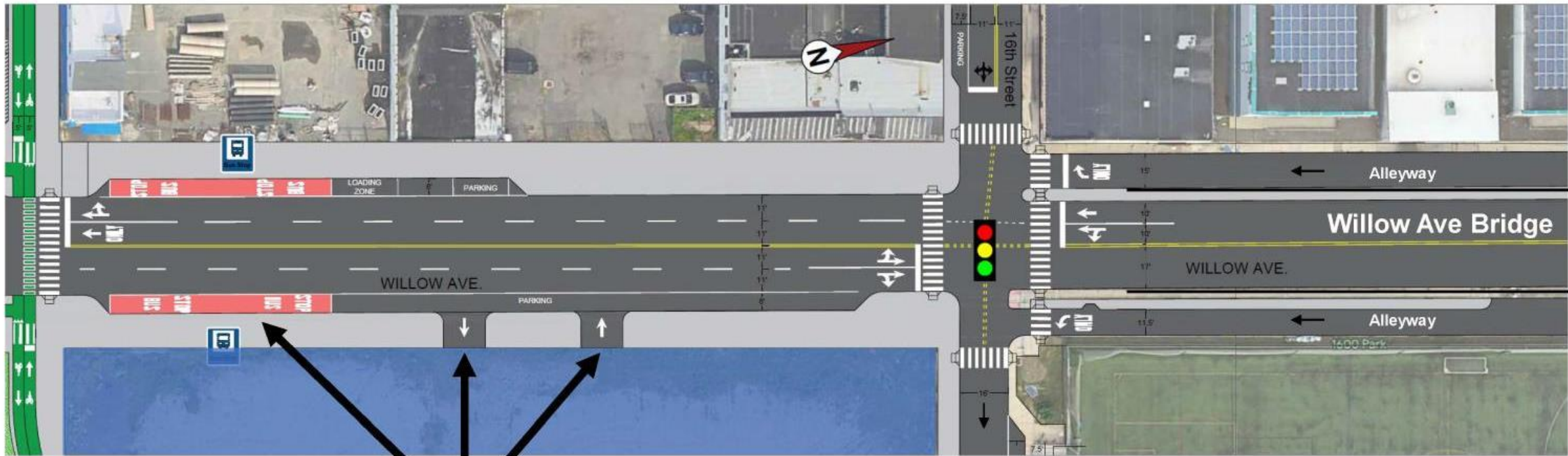




# Plan Recommendations: Themes

- I. **Change the Culture of Traffic Safety** by promoting shared responsibility and addressing the root causes of dangerous driving behaviors
- II. **Design and Build Streets that are Safe for Everyone** by eliminating severe crash risks and delivering accessible networks for people of all ages and abilities walking, biking, and rolling
- III. **Partner and Collaborate** through the creation of multi-jurisdictional projects, policies, and laws and by sharing and growing best practices
- IV. **Enhance Transit and Active Transportation** by advocating for, investing in, and encouraging transit and other safe, affordable, and sustainable transportation choices

# Theme B. Design and Build Streets that are Safe for Everyone



North End Redevelopment Area Anticipated Changes

# Theme D. Enhance Transit and Active Transportation

*by advocating for, investing in, and encouraging transit and other safe, affordable, and sustainable transportation choices.*

- Strategy 1: Advocate and secure sufficient and sustainable transit funding so that everyone has access to safe and affordable mobility.
- Strategy 2: Create safe, accessible, and convenient year-round first- and last-mile connections to transit.
- Strategy 3: Empower people with the information and tools to use all available modes of travel.
- Strategy 4: Balance curbside needs for all users to leverage the full potential of the right-of-way while prioritizing safety.
- Strategy 5: Understand the needs, potential, and impacts of emerging modes of travel, like e-mobility and other small vehicles, and safety integrate them into the menu of travel options.

Local Bus Lines

Light Rail

PATH

NJT Train Lines

Bus Routes to New York

Ferries

Park & Ride

Make Your Own Map

Light Rail/Schedules Connec... → ☰



Tonnelle Ave - West Side  
HUDSON BERGEN LIGHT RAIL



Tonnelle Ave - Hoboken  
HUDSON BERGEN LIGHT RAIL



8th Street - Hoboken  
HUDSON BERGEN LIGHT RAIL

- ☰ E 34th St
- ☰ E. 45th St
- ☰ Danforth Ave
- ☰ Richard St



Continue publishing and expand web map of countywide transit options



Partnership with Hudson TMA



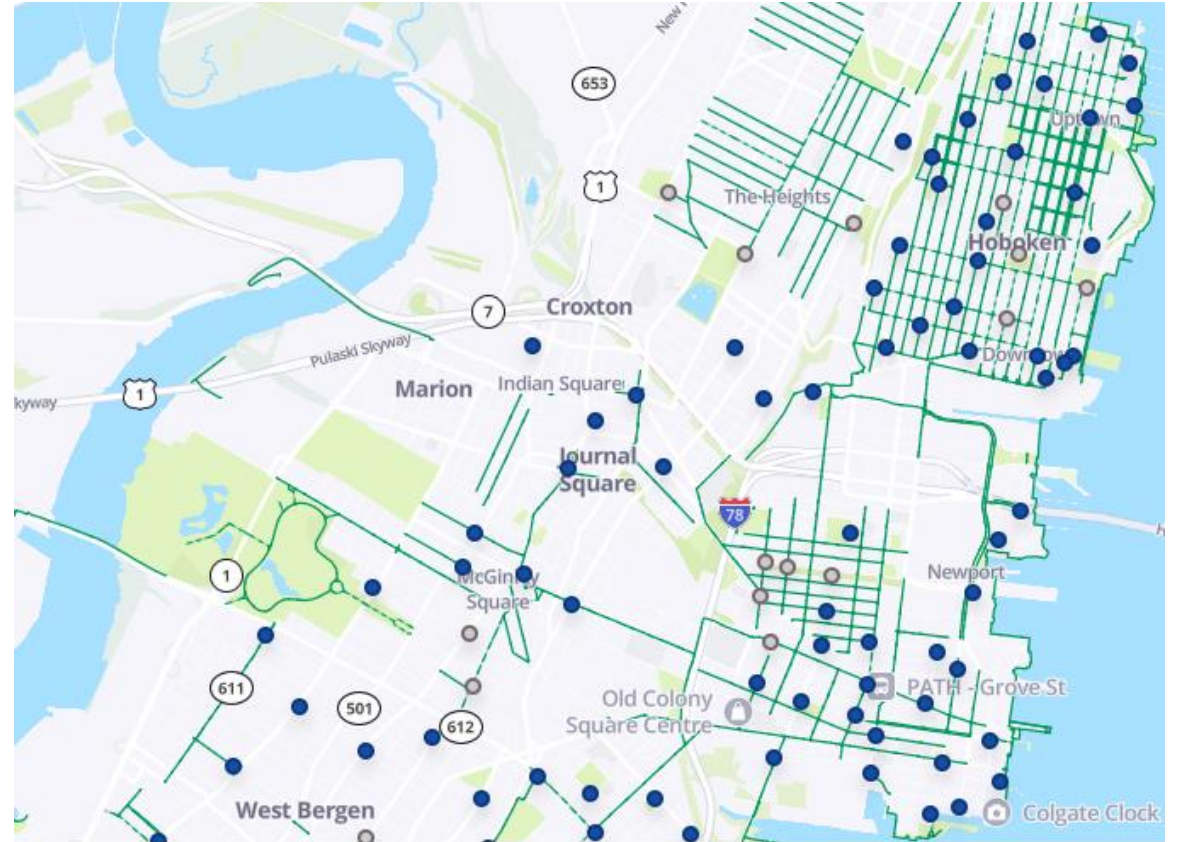
**TOLL OF COMMUTING**

**NJ TRANSIT TESTING OUT AI POWERED SIGNS**

**Collaborate with transit agencies.**

# Other future actions

- Explore CitiBike expansion.
- Mobility Pilot Hub
- Curb Management Assessment
- Conduct a user assessment study to understand how e-mobility is being used throughout the County.



# Hudson County Vision Zero- Continuing Efforts

- **Task Force Meets Quarterly**
- **First Annual report for 2025 to be finalized in next few weeks**
- **Addressing Action Items by Goal Year**



# Bus Rapid Transit (BRT) Study- JFK Blvd. in Jersey

## BACKGROUND



Bayonne/Greenville/Journal Square  
Bus Rapid Transit Study



Final Report

June 2015

## EXPECTATIONS

- Focus on Street Design and how to prioritize bus on our County Road
- Journal Square Transportation Hub is the focal point.



Figure 7 Creative design solutions could improve bus speeds while mitigating traffic impacts (source: Nelson\Nygaard)

HUDSON COUNTY VISION ZERO

# SAFE STREETS

[Hcnj.us/VisionZero](https://hcnj.us/VisionZero)

Francesca Giarratana, [fgiarratana@hcnj.us](mailto:fgiarratana@hcnj.us)