

Burlington County

Delaware River Heritage Trail:
A Case Study



April, 21 2026

**NJ Complete
Streets Summit**



Matthew J. Johnson, P.P., A.I.C.P.
Deputy Director, Open Space Acquisition & Park Development
Burlington County Resource Conservation Department

WHY TRAILS?



Health & Wellness



Transportation



Safety



Burlington County Trails



Economic Development



CONSIDERATIONS: Risk/Liability, Cost, Time





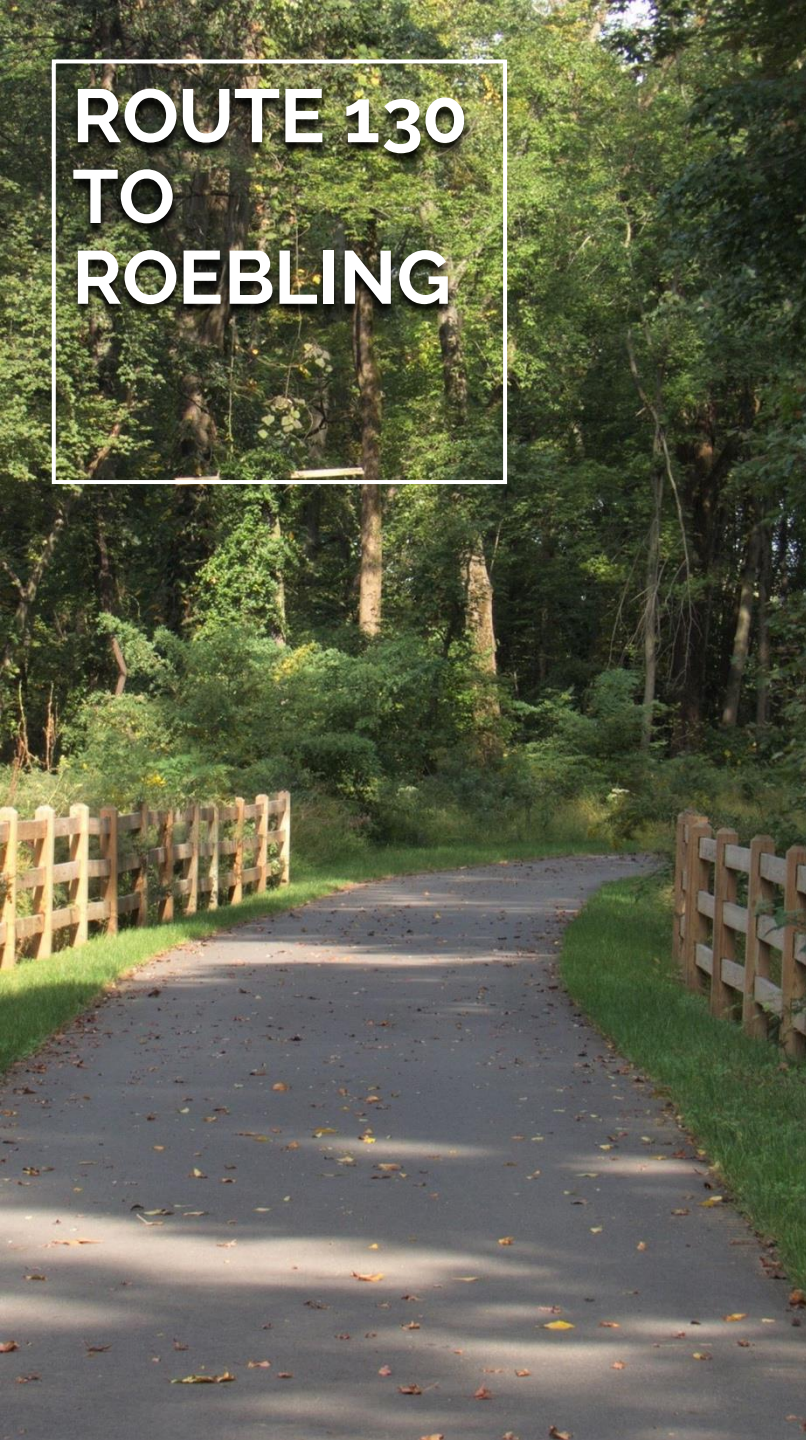
DELAWARE RIVER HERITAGE TRAIL

Route 130 Bypass Project

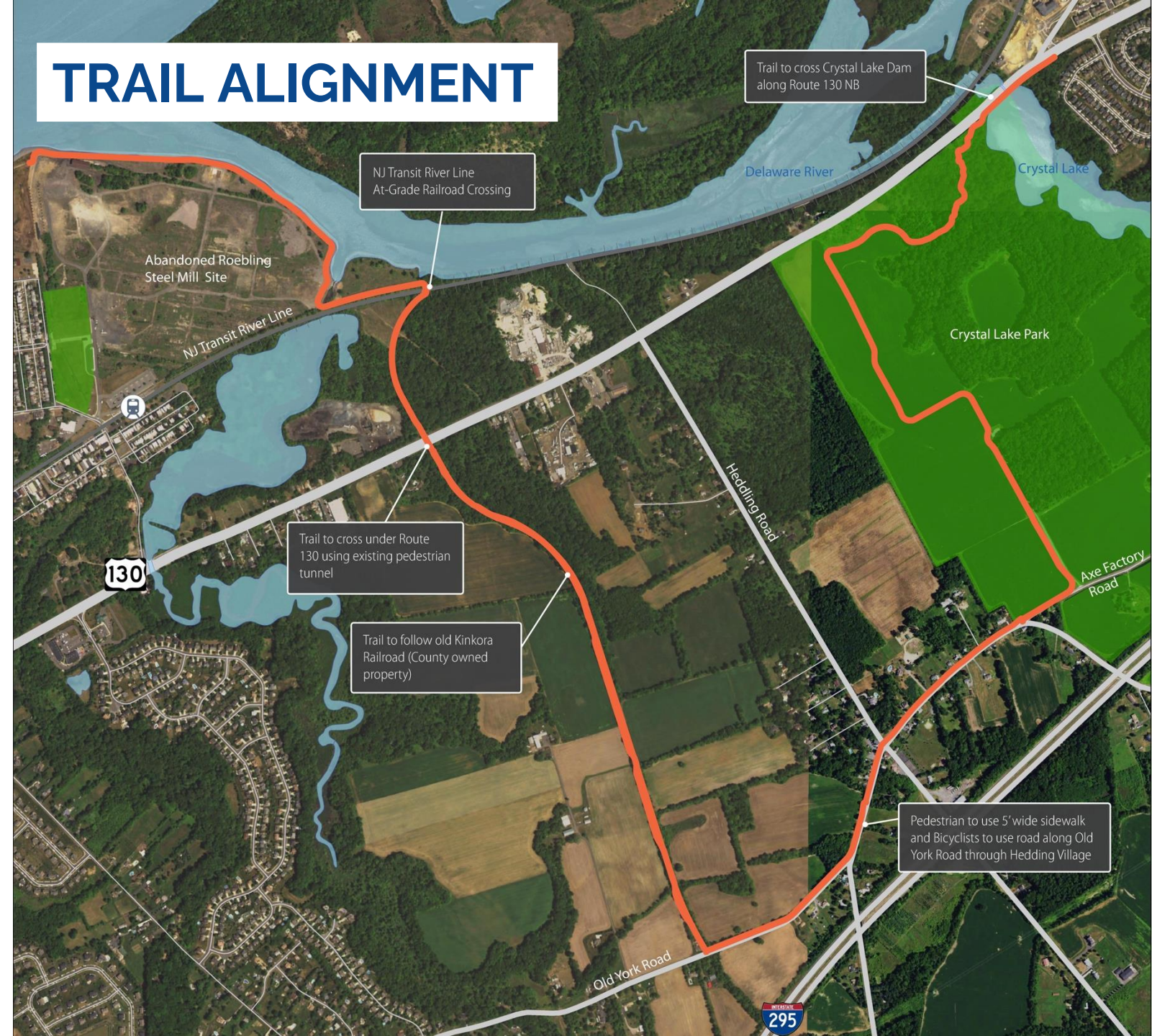
PROJECT LOCATION



ROUTE 130 TO ROEBLING



TRAIL ALIGNMENT



COUNTY PARKS

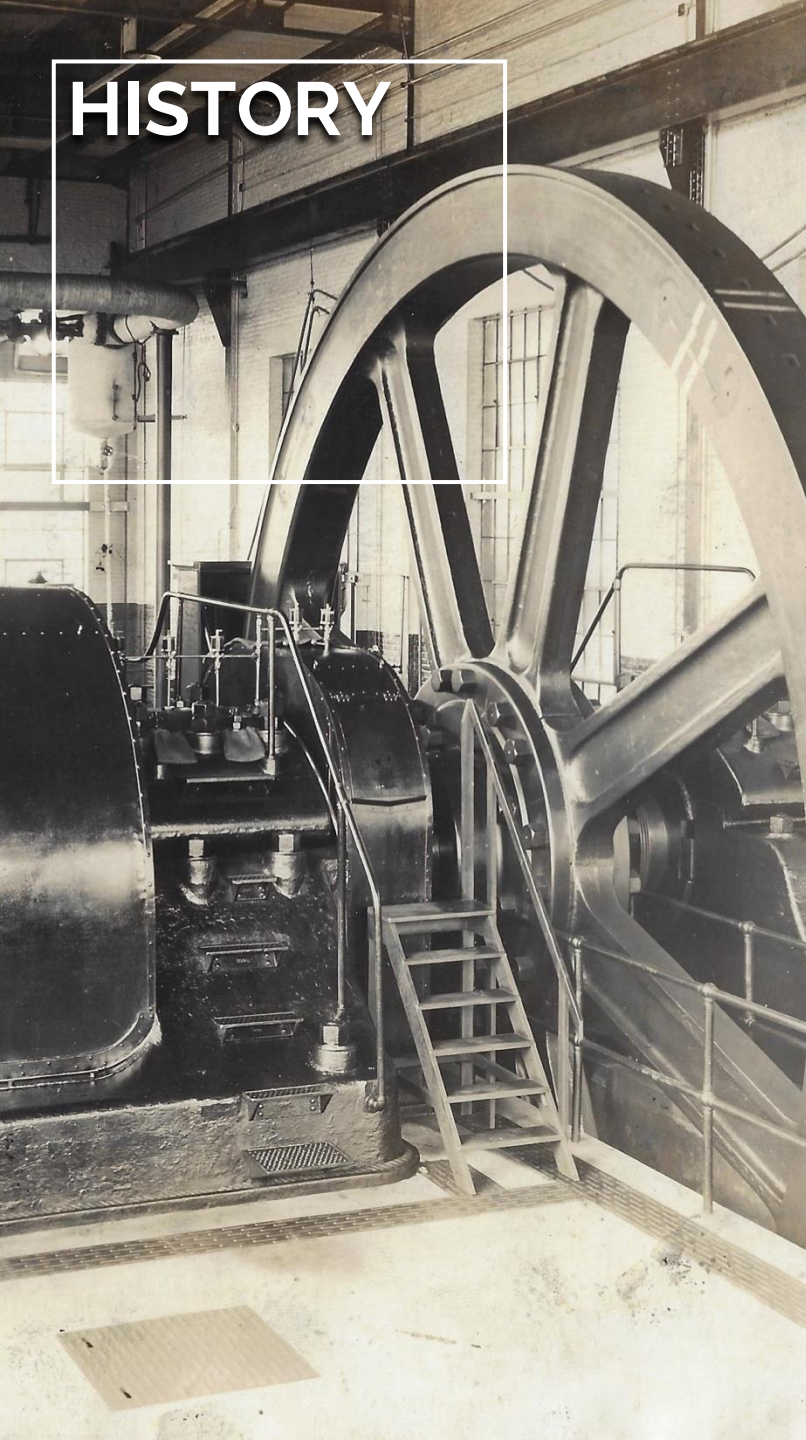


CRYSTAL LAKE PARK

- Over 370 Acres, and 9 miles of trails
- A main access point for a portion of the Delaware River Heritage Trail
- Trailhead

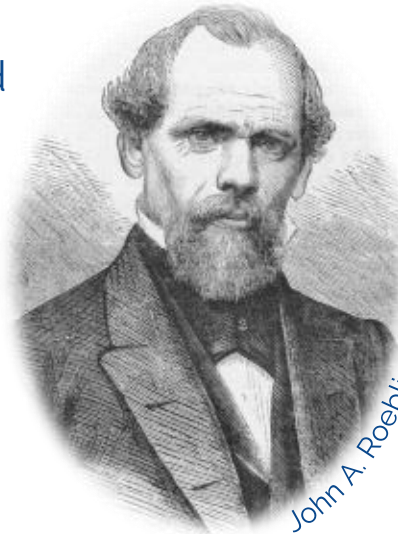


HISTORY



ROEBLING STEEL MILL

- John A Roebling's Sons Company steel, wire manufacturing plant, and village launched in 1904.
- Roebling wire rope was used in suspension bridges as well as telegraphs, telephones, elevators and airplanes.
- Inspired the motto:
'Trenton Makes and the World Takes!'



John A. Roebling



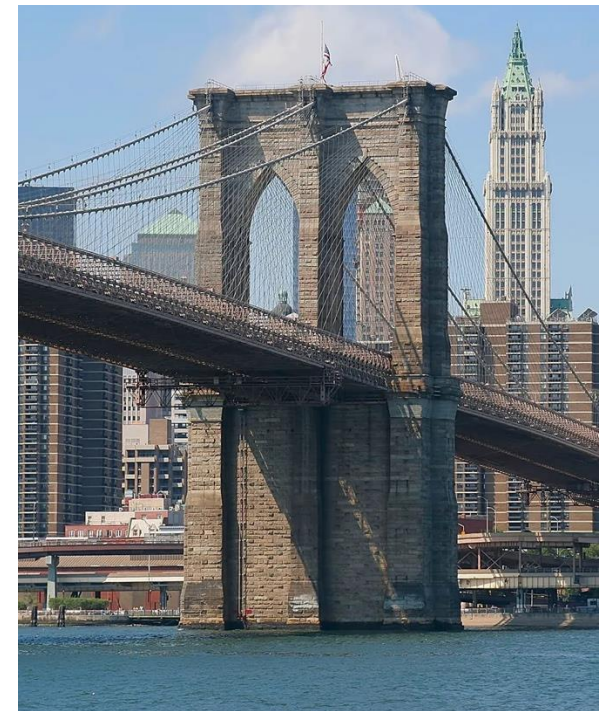
Golden Gate Bridge – San Francisco, CA



200-Acre Roebling Steel Co.



Roebling Museum



Brooklyn Bridge – New York, NY

CHALLENGES



SITE REMEDIATION

- U.S. Environmental Protection Agency designated Superfund site (1983)
- Manufacturing waste/slag; groundwater contamination
- Excavation & disposal; capping & revegetation; decontamination & demolition



DRAINAGE



CHALLENGES



KINKORA RAILROAD

- Be Opportunistic
- Right-of-Way
- Researched Title – 5-mile stretch owned by one person
- Part of a Farmland Preservation project, got donation of Railroad ROW
- Trail development will be challenging



CHALLENGES



KINKORA RAILROAD

- 'Wildlife Crossing' – Benefit of Advance Planning
- The Power of Precedents (NJ-80 Tunnel)
- Coordination with NJDOT



HOW?



HOW DO YOU CREATE THE FUTURE IN YOUR COMMUNITY?

- Plan well in advance
- Think Outside the Box – DREAM BIG!
- Funding
- Expect Obstacles; be Patient, but Persistent
- Be Creative
- Advocacy



A group of cyclists is riding away from the camera on a paved path. The lead cyclist is wearing a bright yellow jersey and black shorts. Behind them, several other cyclists are visible, including one in a red jersey with a white 'V' logo. The path is flanked by tall grass and trees.

Thank you!

Matthew J. Johnson, P.P., A.I.C.P.
Deputy Director, Open Space Acquisition & Park Development
Burlington County Resource Conservation Department

mjohnson@co.burlington.nj.us
856-642-3850