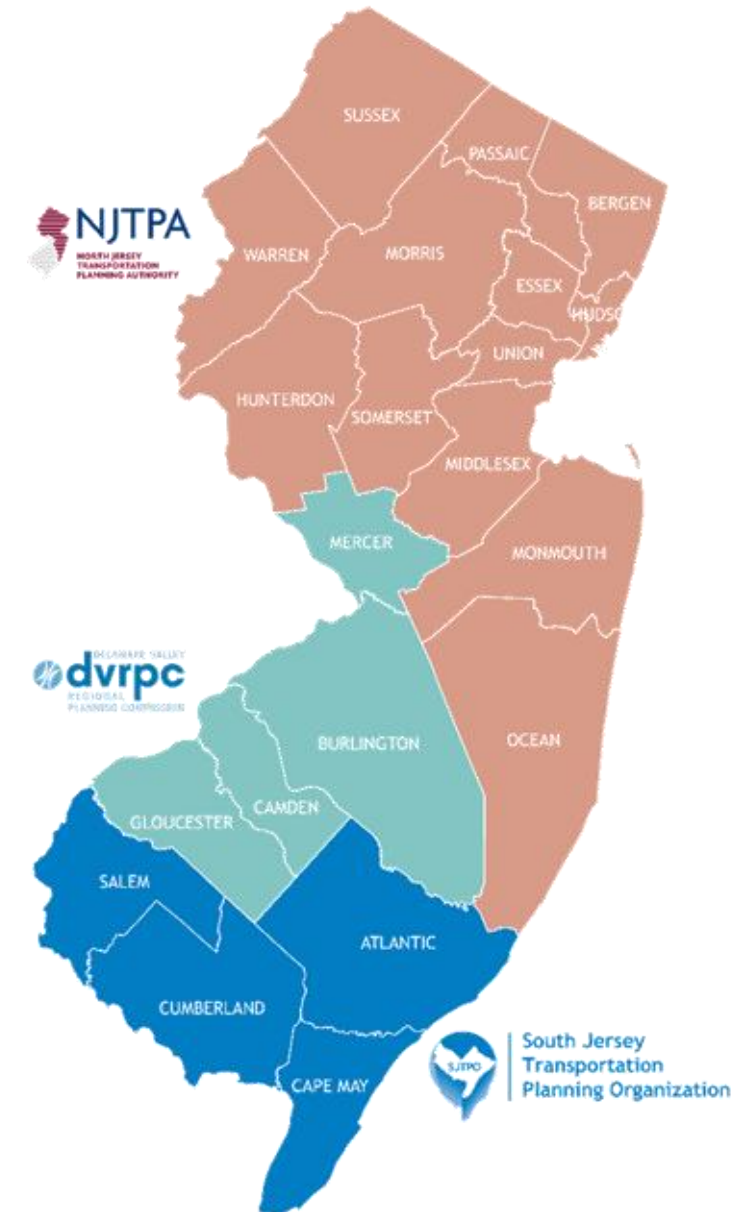


# What is SJTPO?

- Metropolitan Planning Organization (MPO) for Southern New Jersey
- Formed in 1993
- MPOs:
  - provide a forum for cooperative decision-making,
  - coordinate planning activities of participating agencies,
  - promote State and Federal Planning Priorities in the region
  - maintain the eligibility of member agencies for federal transportation funds
- SJTPO serves as a technical resource to local jurisdictions at the discretion of local elected officials (via SJTPO Policy Board)



# The SJTPO Region, By the Numbers

 **590K**  
People

 **950K**  
People (Summer)

 **68**  
Municipalities

 **1,738**  
Square Miles

 **19%**  
Children in Poverty

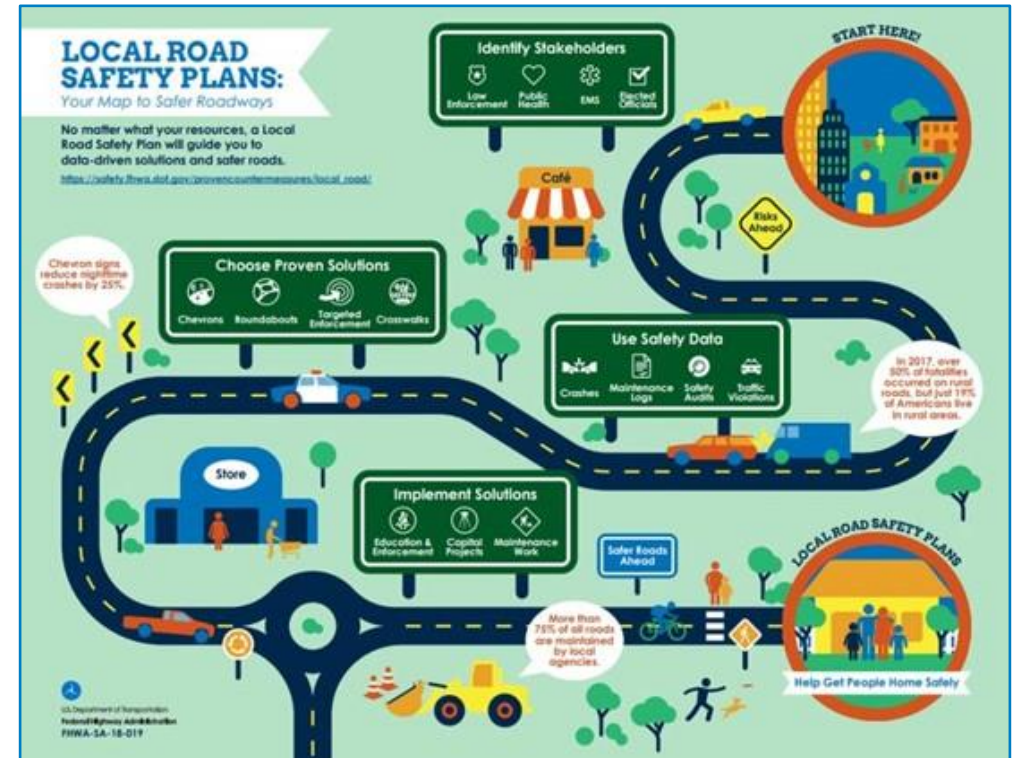
 **363**  
Density

 **978**  
Density (Summer)

 **13**  
Vehicle Deaths  
per 100K

# Countywide Local Road Safety Plans

- Advancing the New Jersey Strategic Highway Safety Plan at the local level, integrating the Safe System Approach
- Develop four separate plans for each County, including:
  - Priority Locations
  - Comprehensive menu of systemic safety countermeasures
  - Investment strategy
- Ongoing support to ensure implementation – Year 3+



# Local Road Safety Plan (LRSP) Approach

## Investment Strategy

### Systemic Approach

- Proactive
- Focuses on Mitigating Risk
- Widespread, Low-Cost Countermeasures
- Network View

### Hotspot Approach

- Reactive
- Focuses on Mitigating Past Crashes
- Location Specific Countermeasures
- Site Specific BCA

# LRSP Data Collection

---

- **Segments / Corridors**

- Bi-directional traffic volumes
- Number of lanes
- Lane width
- Shoulder type
- Shoulder width
- Curvature
- Sidewalk presence
- Roadway Lighting

- **Intersections**

- Control type (signalized/unsignalized)
- Number of approaches

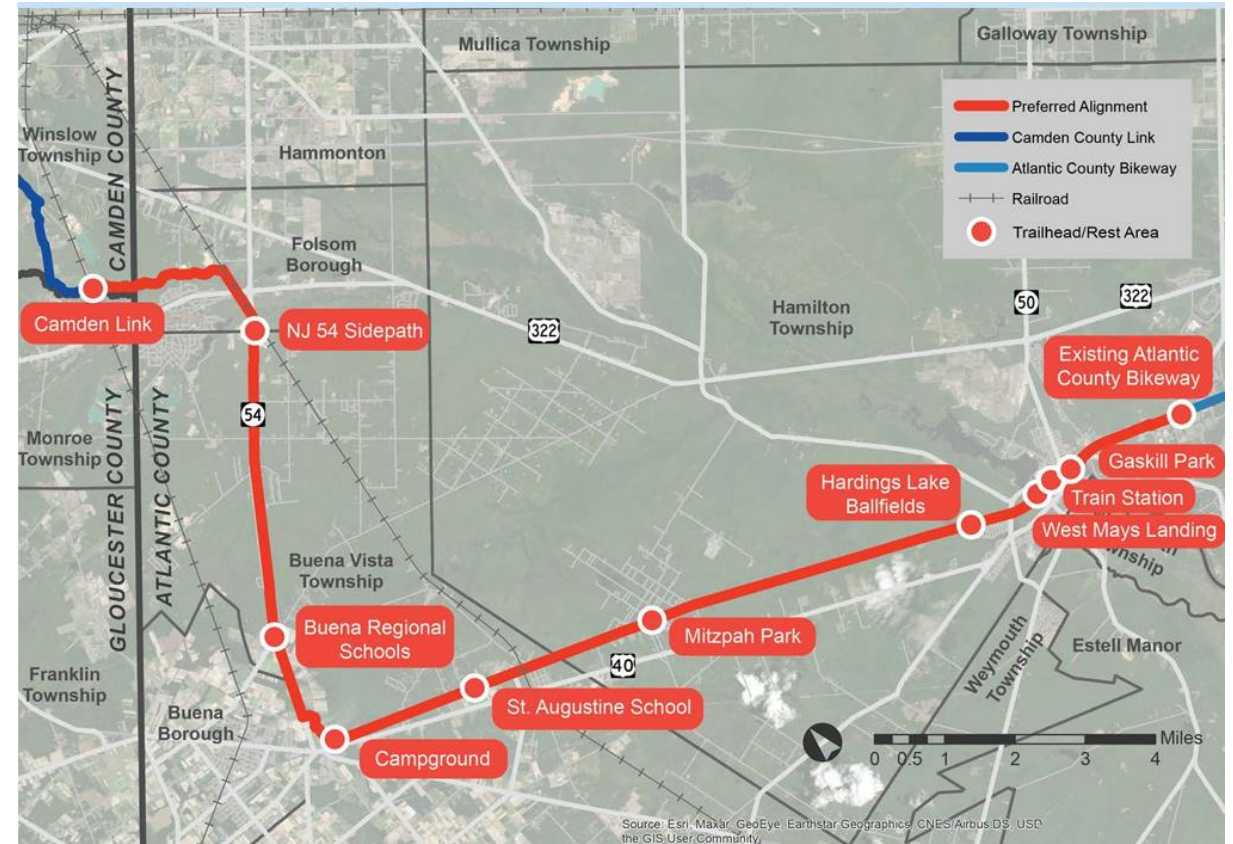
- Approach configurations (turn lanes, # of through lanes)
- Total intersection approach width
- Intersection lighting
- Crosswalk presence
- Major/minor pedestrian crossing distance

- **Both**

- Posted speed
- Access points
- Median presence/type
- Area type (urban/rural)

# Atlantic County Bikeway West

- Advanced Feasibility/ Concept Development effort
- Create viable trail path from Camden County Link to Atlantic County Bikeway East
- Conduct preliminary impact assessments on environment and economy
- Establish project phases and funding opportunities
- Collaborate with stakeholders and public



# Regional Active Transportation Master Plan

- Improve connectivity in the region
- Build off regional trail and safety work completed to date
- Broad assessment of connectivity
  - Sidewalks (collected)
  - Crosswalks
  - Trails
  - Other data to identify existing gaps
- Develop Level of Traffic Stress
- Develop Active Transportation Committee
  - Identify visionary trails network



# Complete Streets in SJTPO

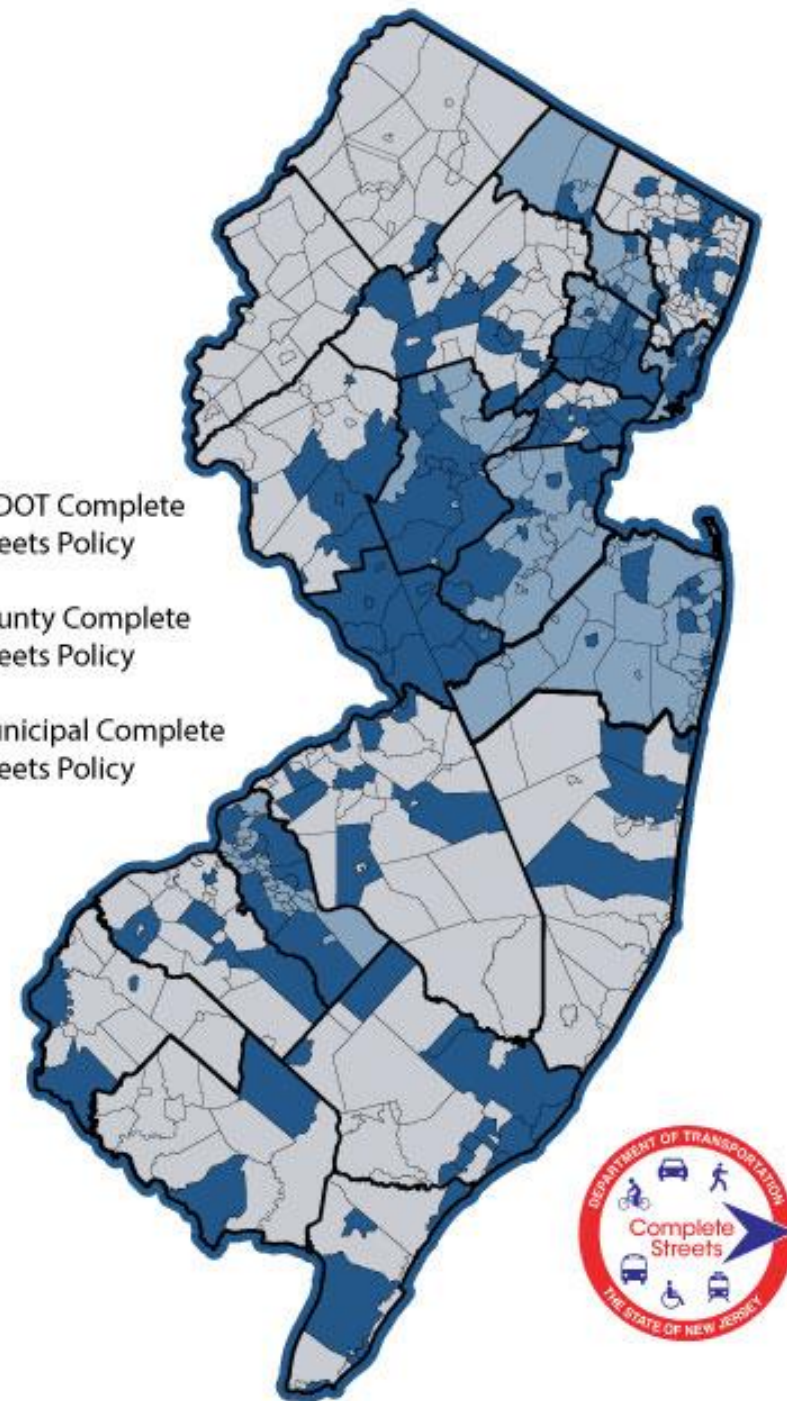
Municipal Policies:

**24**

*as of April 2026*

[njbikeped.org/nj-complete-streets-policy-compilation](http://njbikeped.org/nj-complete-streets-policy-compilation)

-  NJDOT Complete Streets Policy
-  County Complete Streets Policy
-  Municipal Complete Streets Policy



# Complete Streets Technical Assistance Program

- Modeled off a successful program in the NJTPA region
- Work kicked off in late October 2024
- Offered through partnership with Rutgers VTC, Sustainable Jersey, and Cross County Connection



# Overview

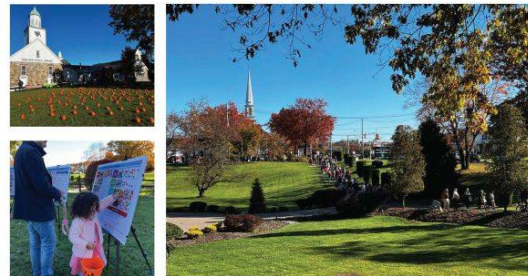
- Up to \$15,000 in free direct technical assistance services
- No direct funding is provided
- Approximately 6-9 months in duration
- Competitive Process
- One application per municipal local public agency



Source: NJTPA CSTA reports

# Types of Technical Assistance

- Complete and Green Streets for All Guidance
- Bicycle Network Plan
- Complete Streets Community Workshop Walk Audit



Complete &  
Green Streets Policy  
Borough of Oakland, Bergen County, NJ  
2023



Bicycle Network Plan  
Cranbury Township, Middlesex County, NJ  
January 2021



Central Avenue  
Walkable Community Workshop  
Seaside Heights Borough, Ocean County, NJ  
2023



# Demonstration Library

- Recently launched
- Housed at SJTPO offices in Vineland
- Available to Southern NJ municipalities and counties
- Free of charge

