

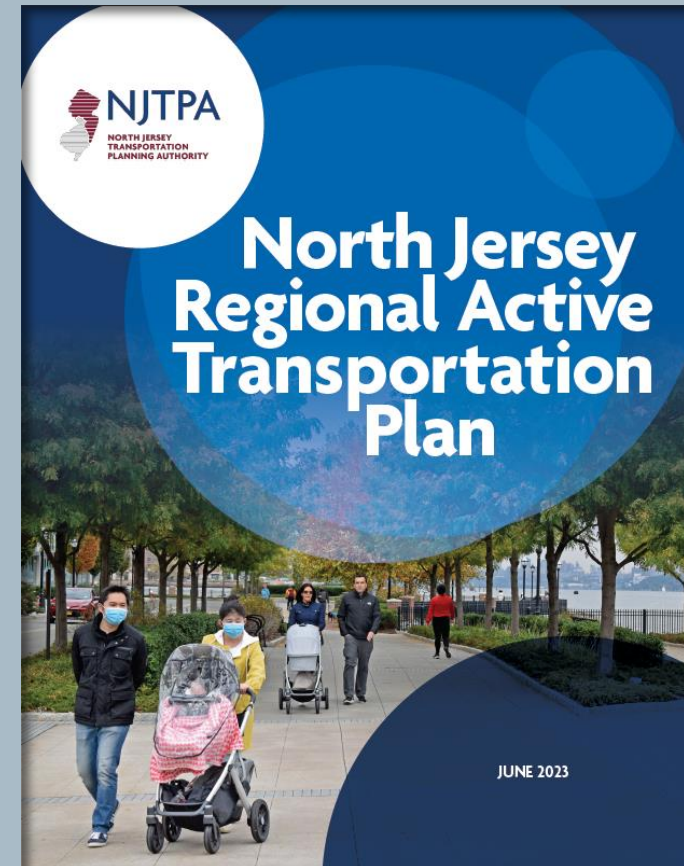
Active Transportation Plan

Bicycle and Pedestrian Advisory Council Meeting

July 26, 2023

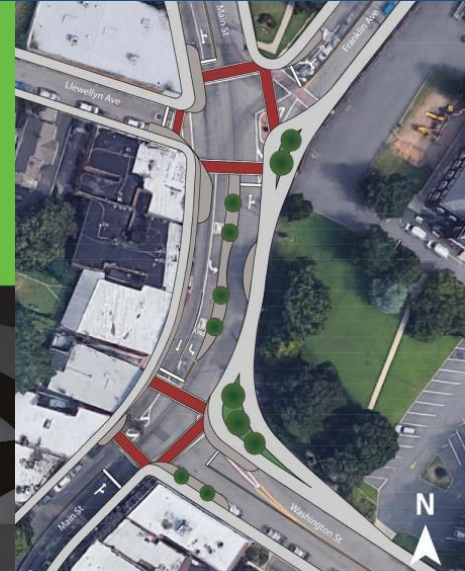
Keith Hamas, AICP

North Jersey Transportation Planning Authority



NJTPA Support for Active Transportation

- Regional Active Transportation Plan
- Complete Streets Technical Assistance
- Local Safety Program
- Demonstration Library
- Street Smart NJ
- Subregional Studies
- Pedestrian Counts



Regional Active Transportation Plan Overview

1

**To build consensus
around active
transportation goals**

2

**To create solutions to the
region's challenges
impacting active
transportation users**

3

**To establish a
comprehensive strategic
framework for a highly
functioning, regional
active transportation
network**

Elements of ATP

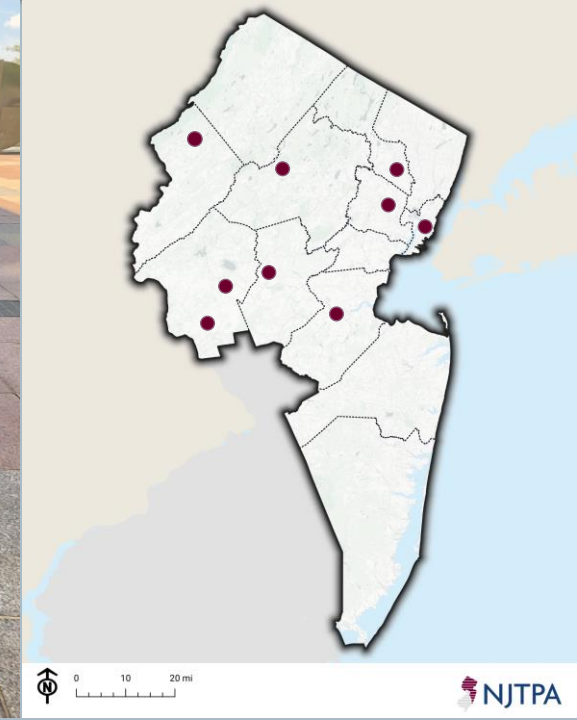
- Existing conditions
- Engagement
- Conceptual network
- Case Studies
- Final plan



Engagement



Pop-Up Event	County	Date (2022)
National Night Out	Union	August 2
Somerset County 4H Fair	Somerset	August 11
Passaic County Fair	Passaic	August 12
Hunterdon County 4H Fair	Hunterdon	August 26
Montclair Jazz Festival	Essex	September 10
New Brunswick Farmers Market	Middlesex	September 17
JC Farmers Markets	Hudson	September 21
46 th Music Under the Stars	Hunterdon	July 28 and August 4
National Night Out	Union	August 2



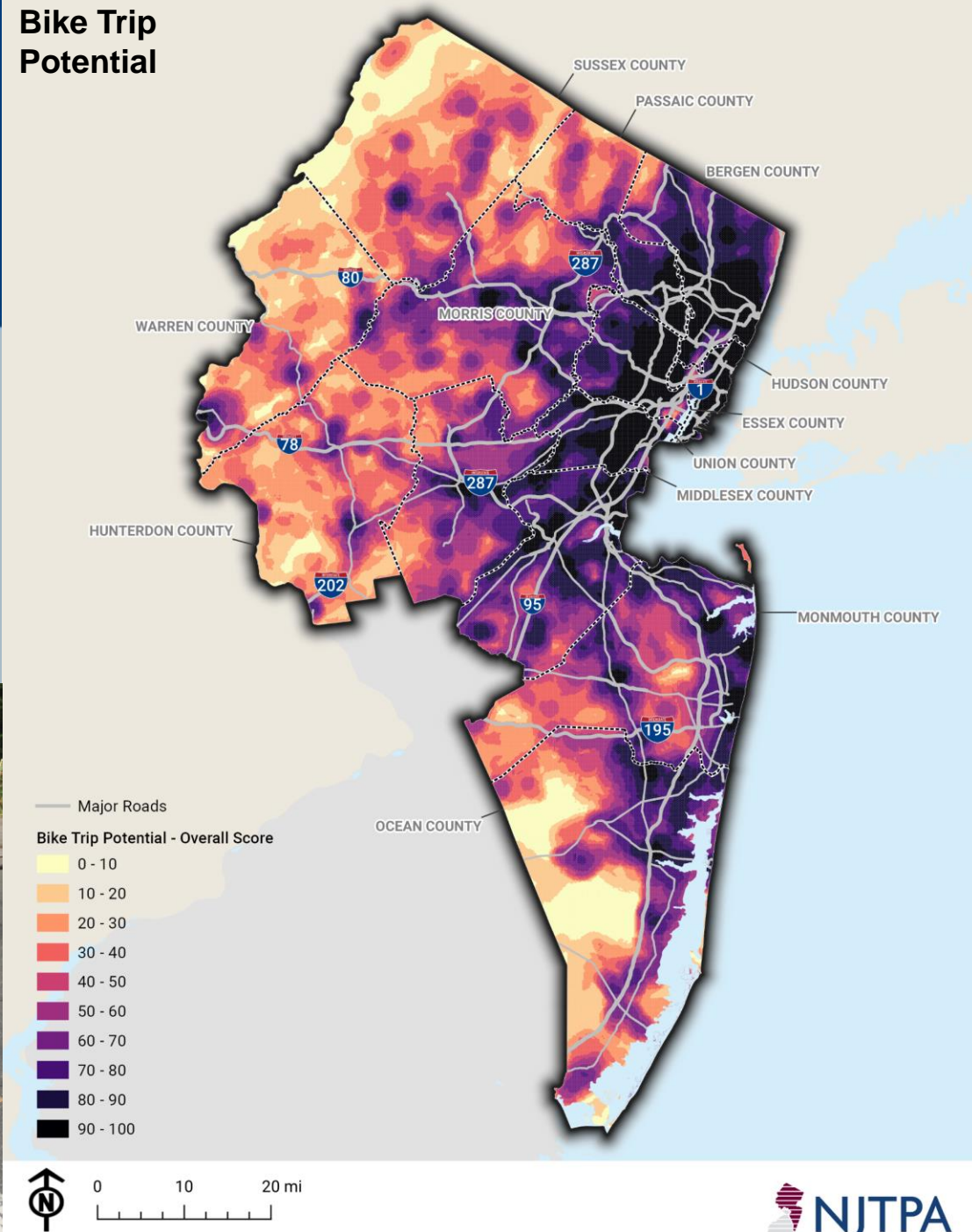
Technical Analyses

Trip Potential Analysis

- Where are people most likely to walk or bike?
- Where would pedestrian and bicycle infrastructure serve more users?



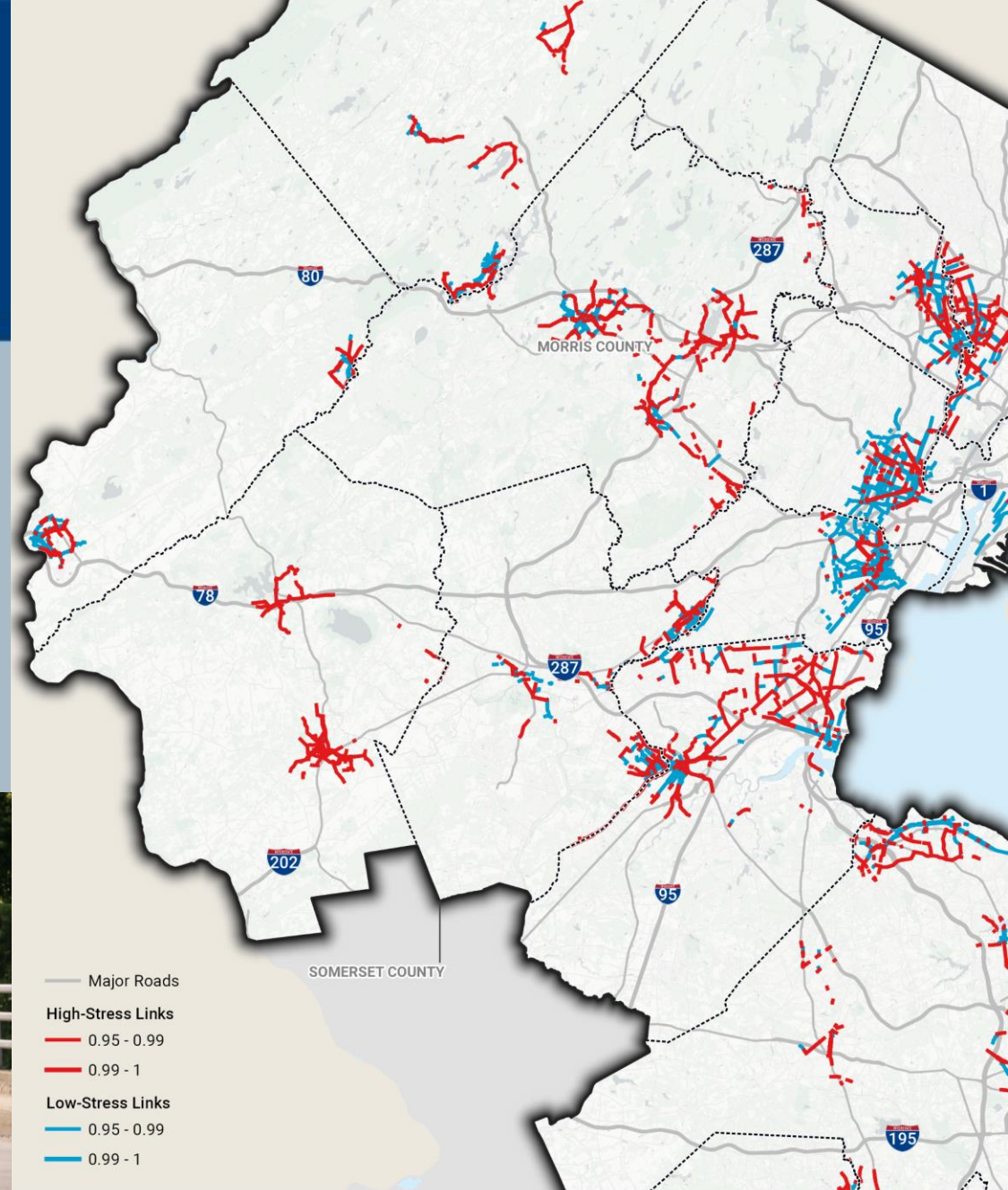
Bike Trip Potential



Technical Analyses

Barrier Analysis

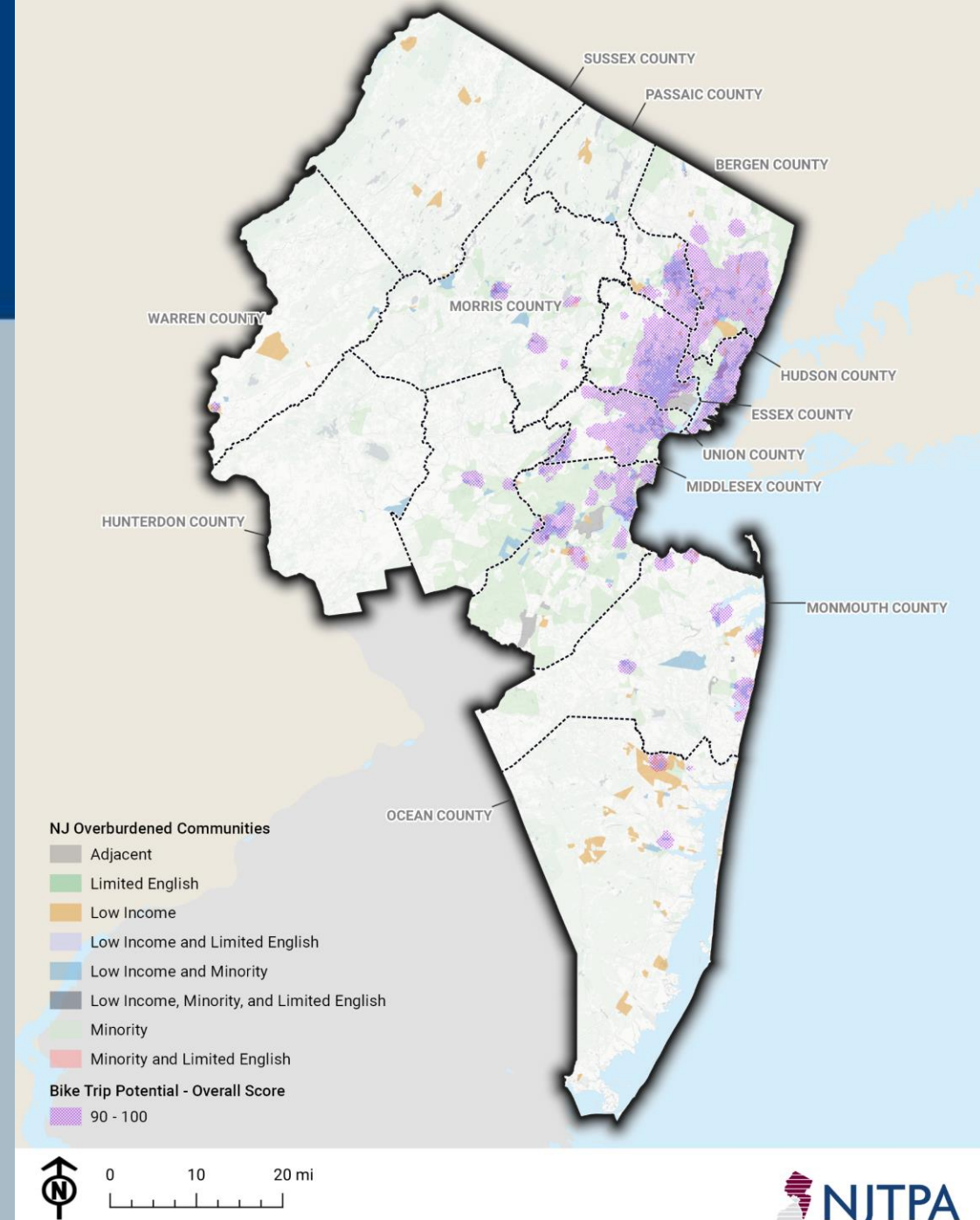
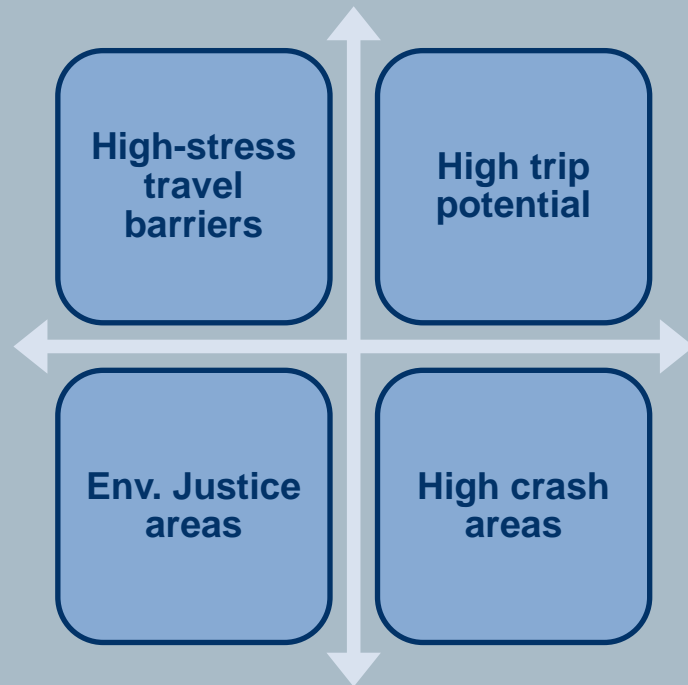
- Which network links are important for bike connectivity?
- Which links act as barriers to connectivity?
- Which links will have high network benefits if improved?



Technical Analyses

Equity and Network Screening Analyses

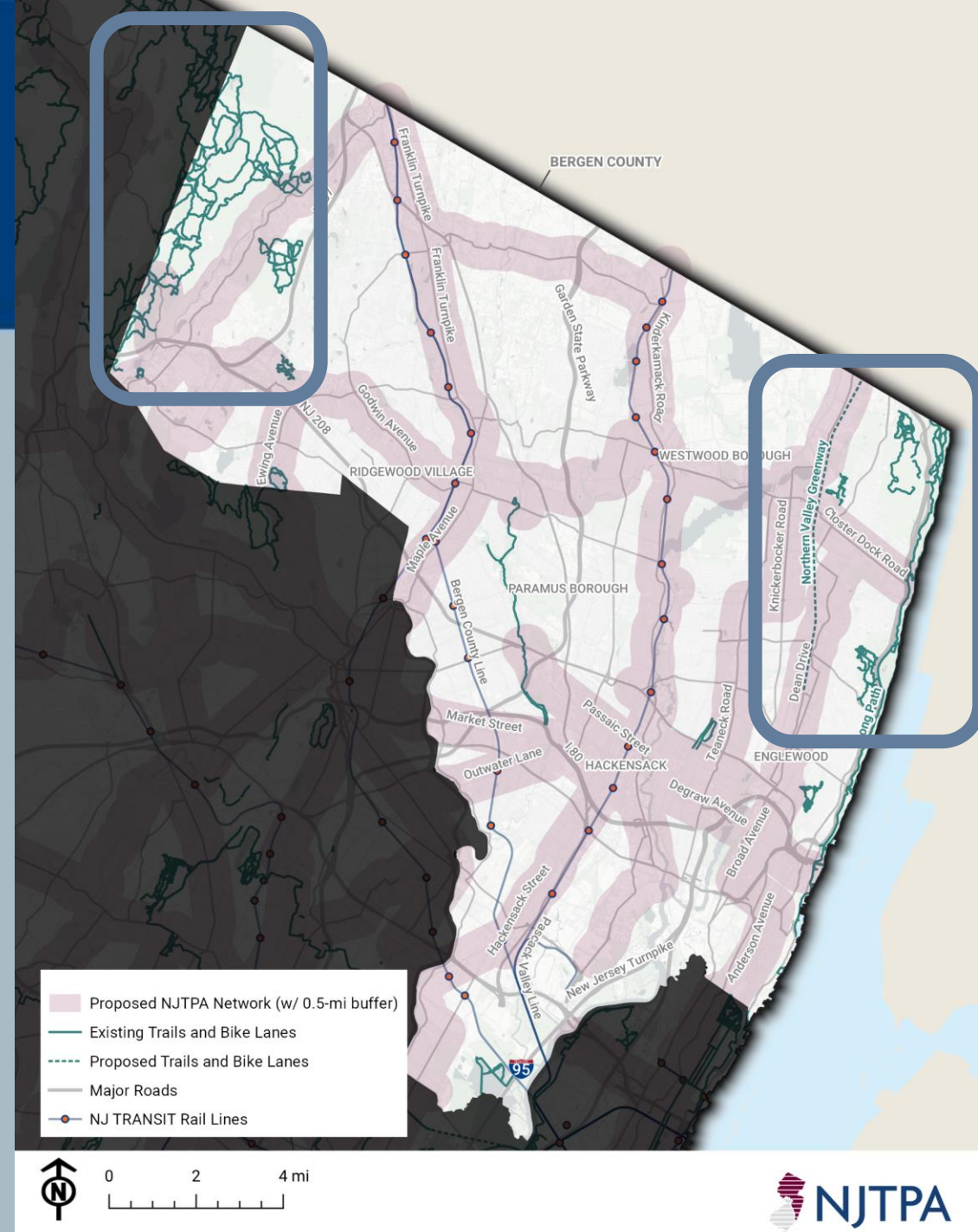
- Which areas see a combination of **high demand, network barriers, safety and/or disadvantaged population**?



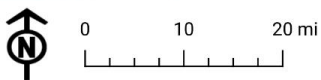
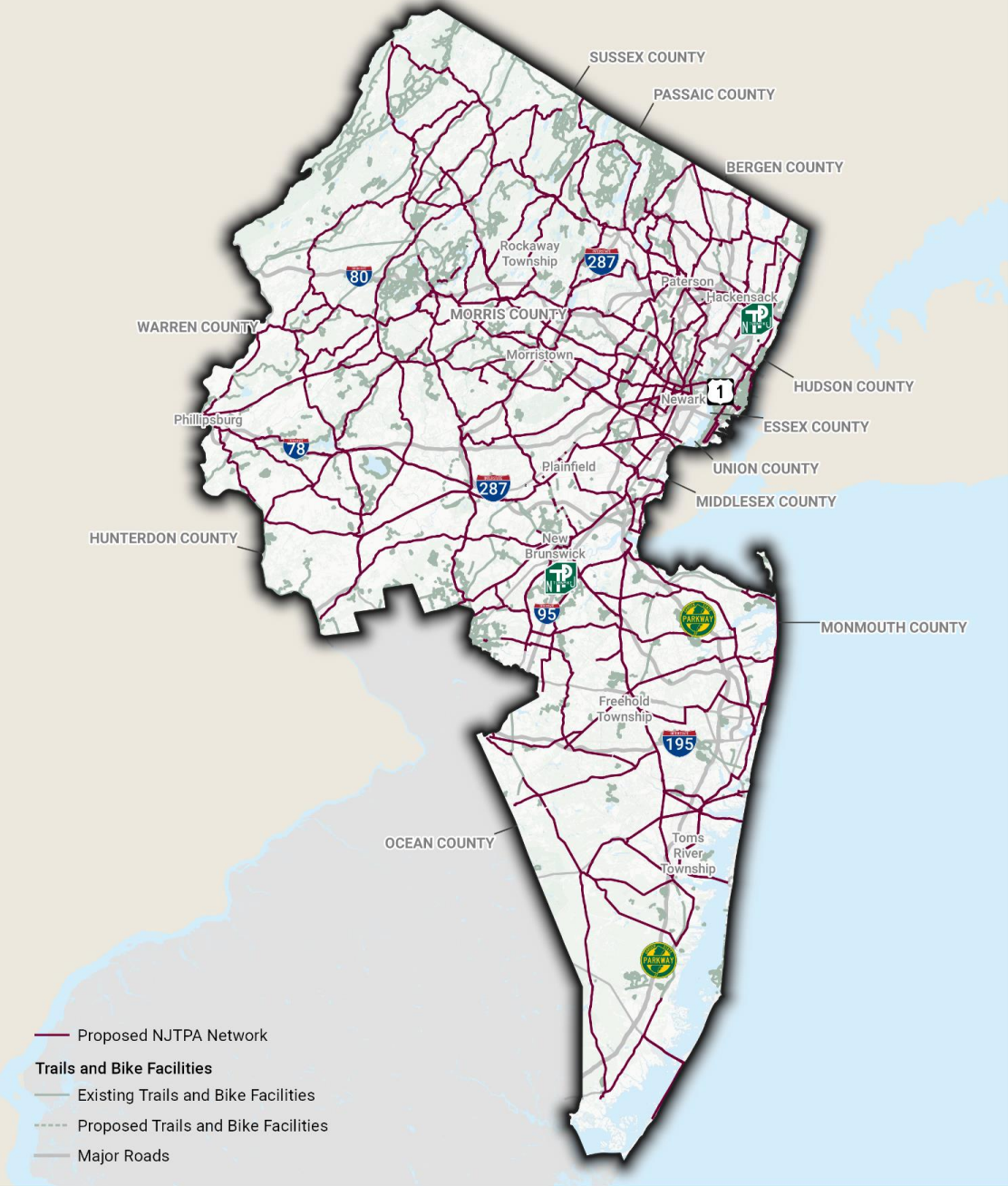
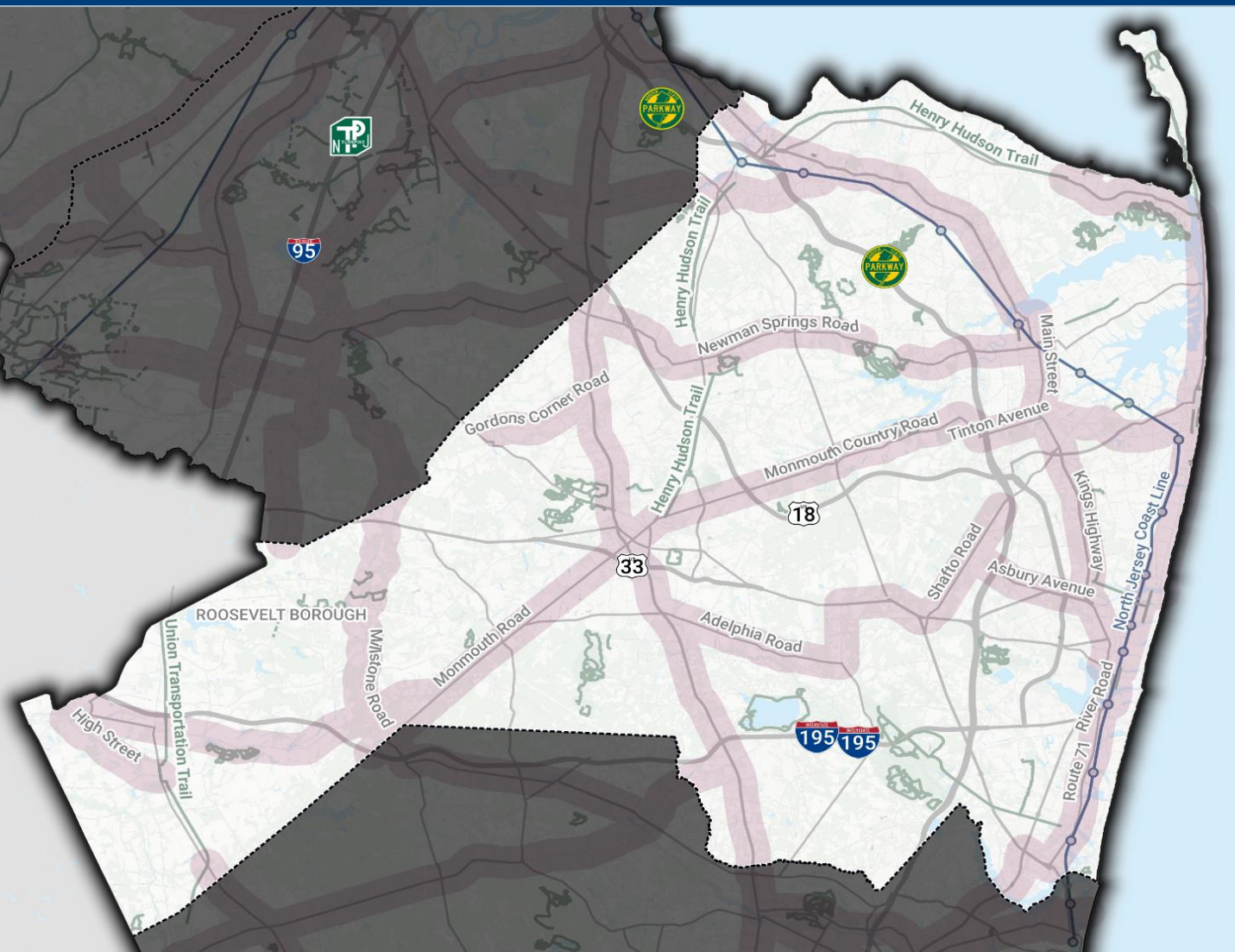
Preliminary Network

Network Building Blocks

- NJ statewide trails layer
- Public feedback
- Regional review
- Regional network analyses



Preliminary Network



ATP Strategy Guide



ATP Strategy Guide



OLDER
ADULTS

PEOPLE OF
COLOR

LOW INCOME
COMMUNITIES



1. Capacity Building

Advance active transportation projects efficiently with support from staff, consultants, and stakeholders.

2. Interjurisdictional and Multidisciplinary Collaboration

Encourage consistent, open communication between stakeholders on active transportation project implementation.

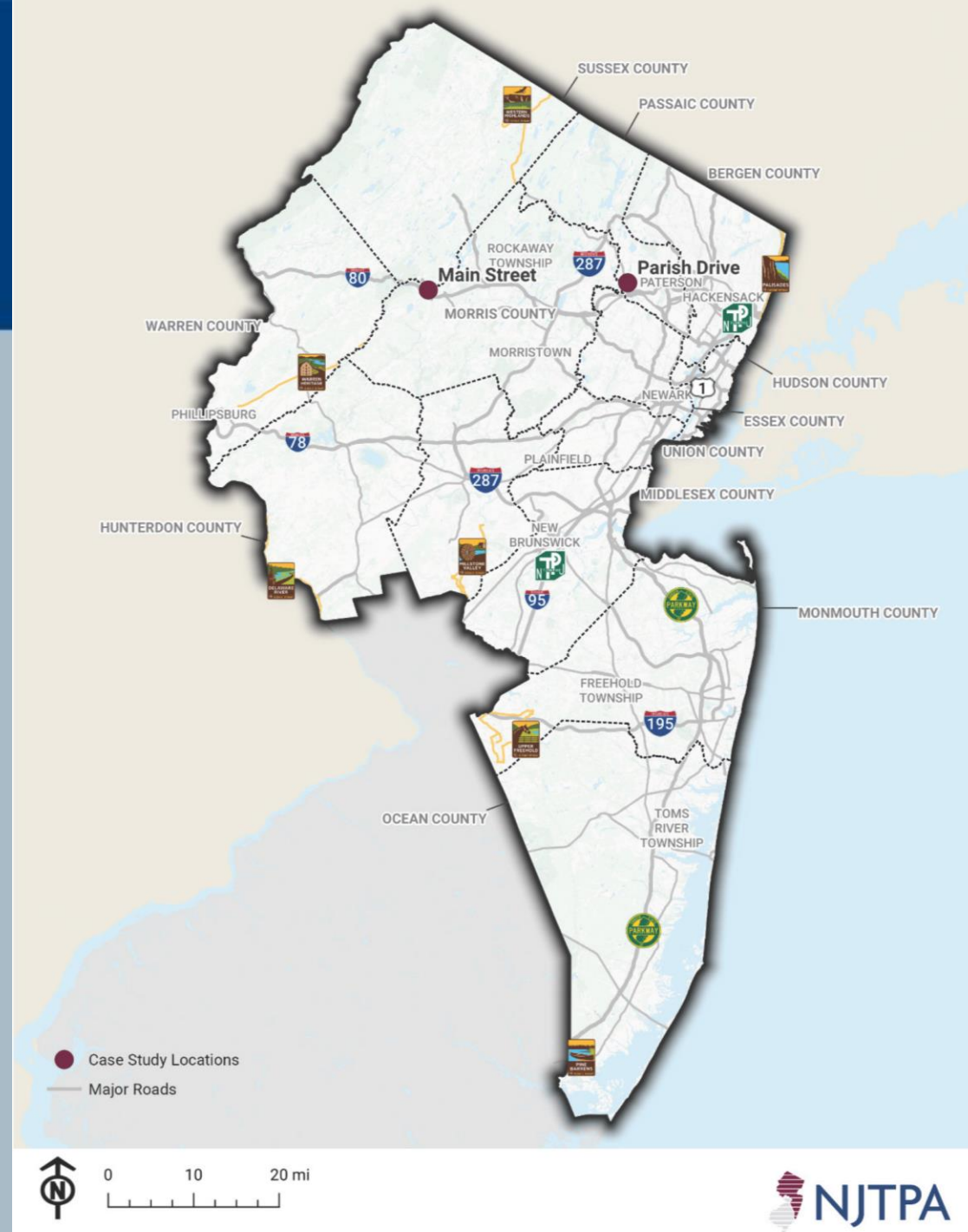
3. Equity and Environmental Justice

Integrate equity and environmental justice into active transportation planning processes.

Case Studies

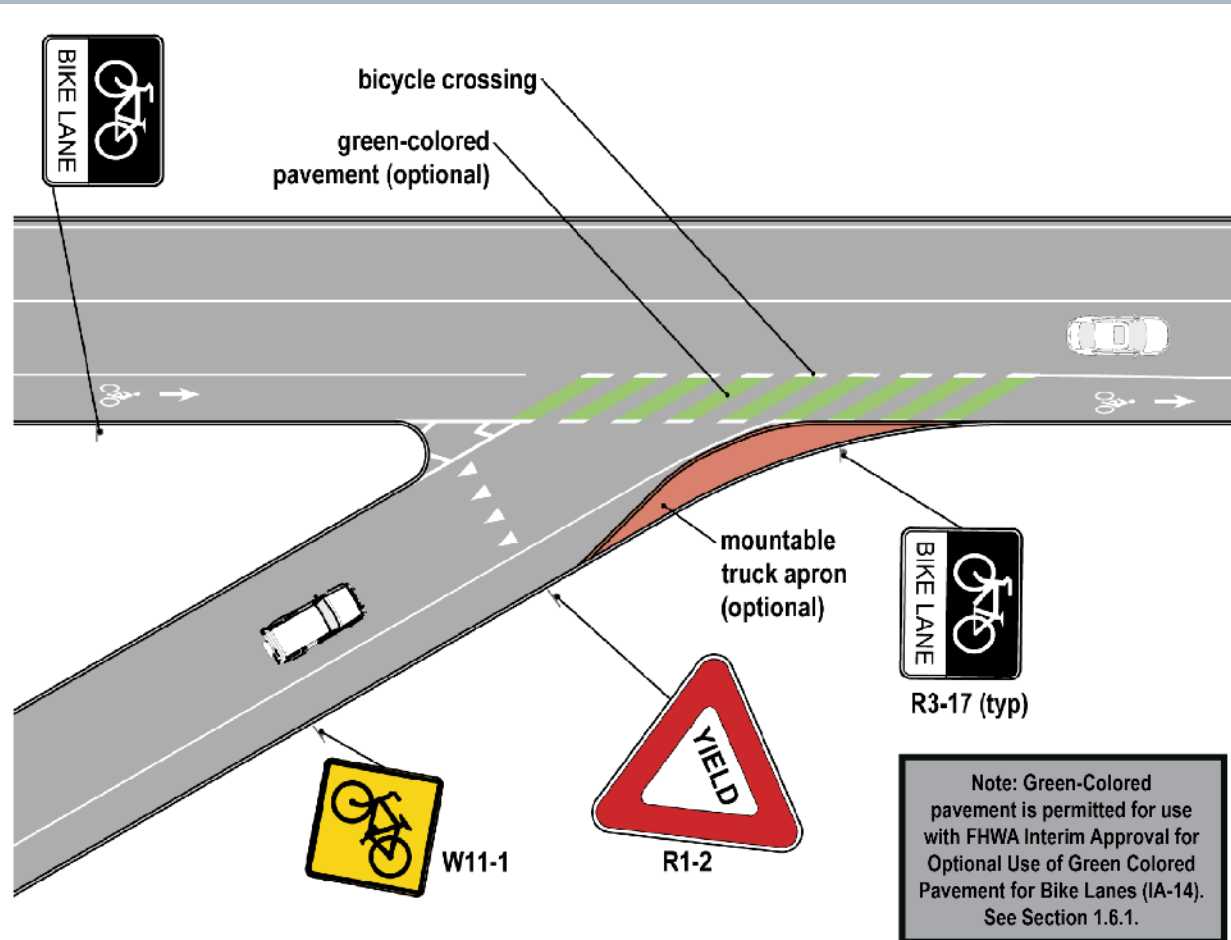
Process

- Review relevant plans
- Assess existing conditions
- Meet with stakeholders
- Develop recommendations

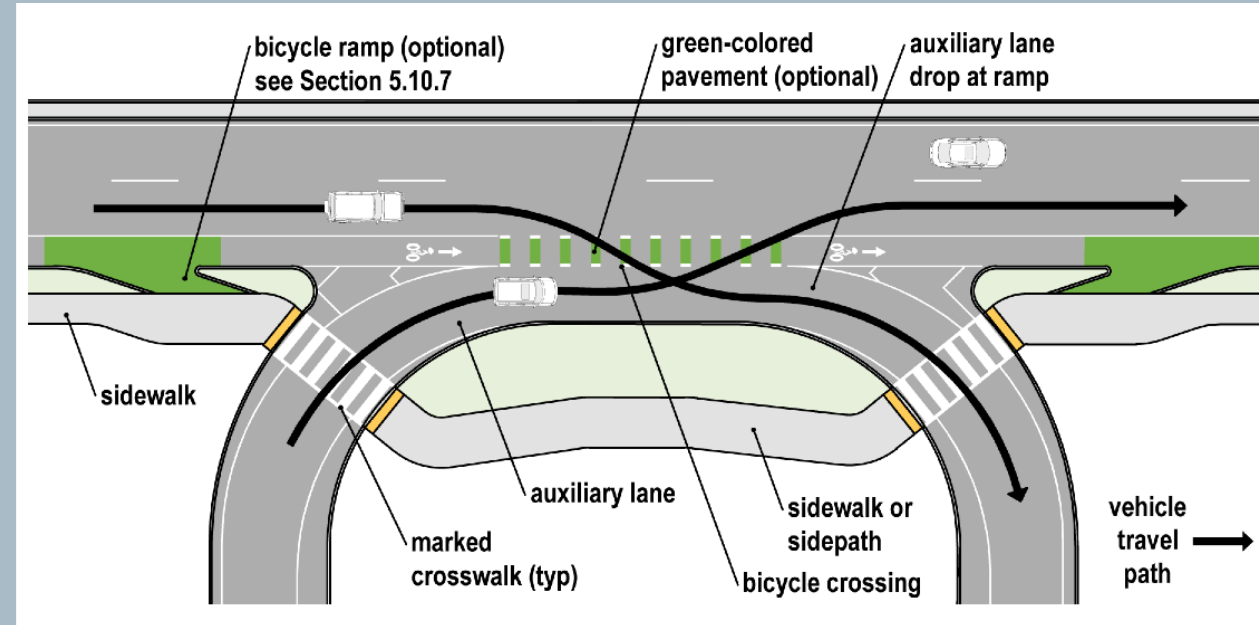


Highway Interchanges Analysis

Bicycle Lane Carried Across an Exit Ramp Throat



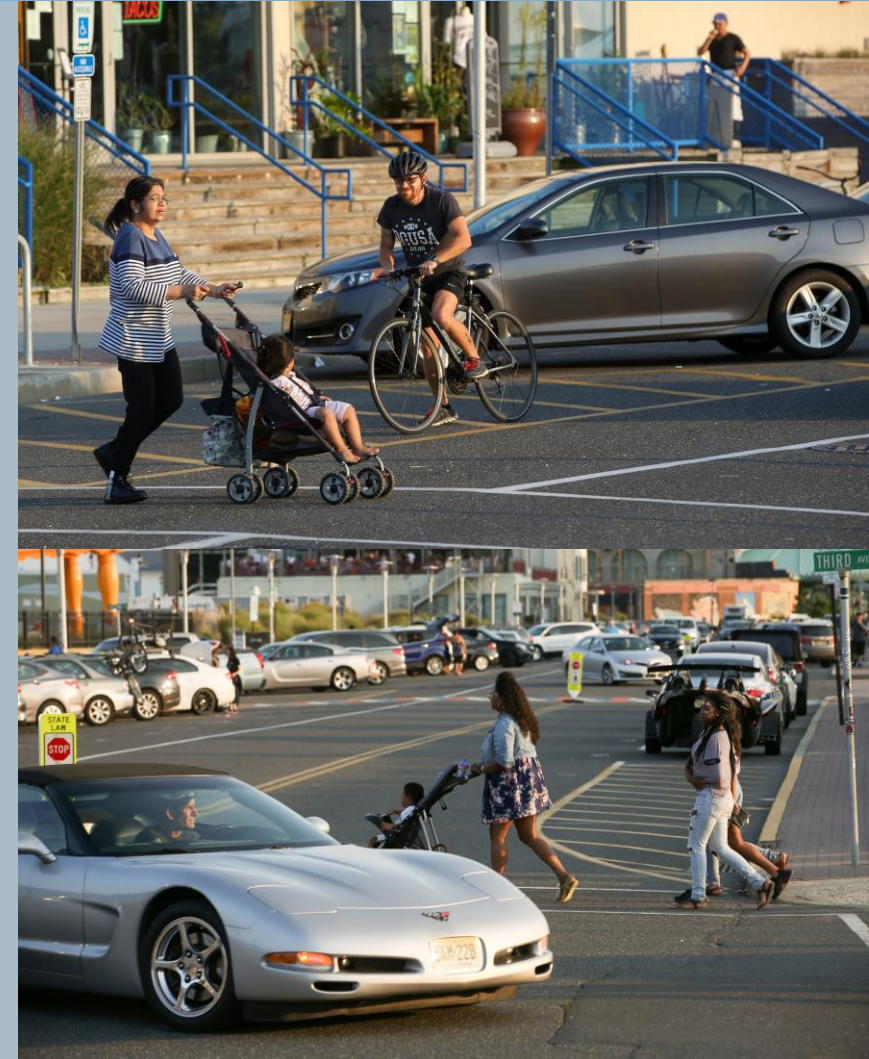
Bike Lane Positioned in High-Exposure Weaving Area



Example Treatments

Next Steps

- Post Final Plan on NJTPA website
- Provide data resources
- Promote regional coordination
- ATP Implementation



Thank You!

Keith Hamas | khamas@njtpa.org

Defining the Vision. Shaping the Future.



NJTPA

**NORTH JERSEY
TRANSPORTATION
PLANNING AUTHORITY**

