

Safe Streets and Roads for All (SS4A)

Key Takeaways from FY22

March 6, 2023

New Jersey BPAC Meeting



RUTGERS

Edward J. Bloustein School
of Planning and Public Policy



What is the SS4A Program?

- Competitive FHWA grants for safety improvements on public roads
- Available to governing bodies below the state government level
- \$5 billion made available in the Bipartisan Infrastructure Law (BIL) over 5 years
- \$1 billion of funding per year
 - 40% of awards must go toward planning activities each year
- 20% local match

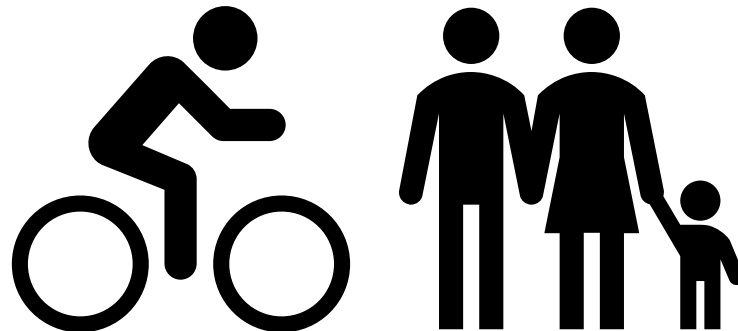
*[Info Source: FHWA, League of American Bicyclists]
[Info Source: FHWA]*

Overview



The **Safe Streets and Roads for All (SS4A)** program supports the [National Roadway Safety Strategy](#), which is centered around the **Safe System Approach**:

- Funds local initiatives to prevent fatalities and serious injury (FSI)
- Supports “Vision Zero” or “Toward Zero Deaths” initiatives



[Info Source: FHWA]



The Two Types of Grants

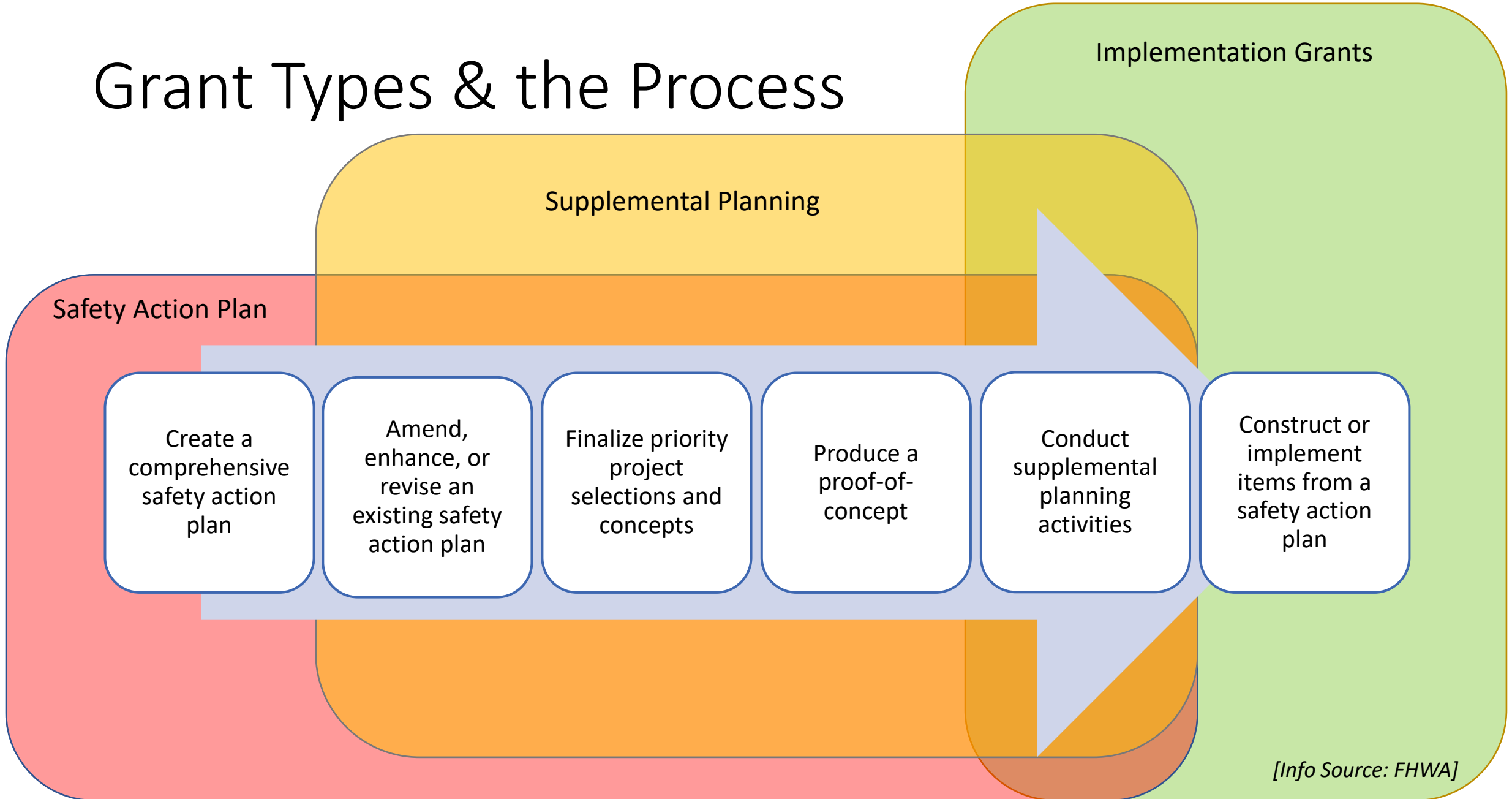
Action Plan Grants

- Create a comprehensive safety action plan
- Conduct supplemental planning activities in support of an existing action plan
- Estimated funding per grant:
 - \$200,000 to \$1 million for a single applicant
 - \$200,000 to \$5 million for a joint or regional applicant

Implementation Grants

- Implement projects and strategies outlined in a qualifying comprehensive safety action plan
- Conduct supplemental planning activities in support of an existing action plan
- Estimated funding per grant:
 - \$5 million to \$30 million for a single applicant
 - \$3 million to \$30 million for a rural or tribal applicant
 - \$5 million to \$50 million for a joint or regional applicant

Grant Types & the Process

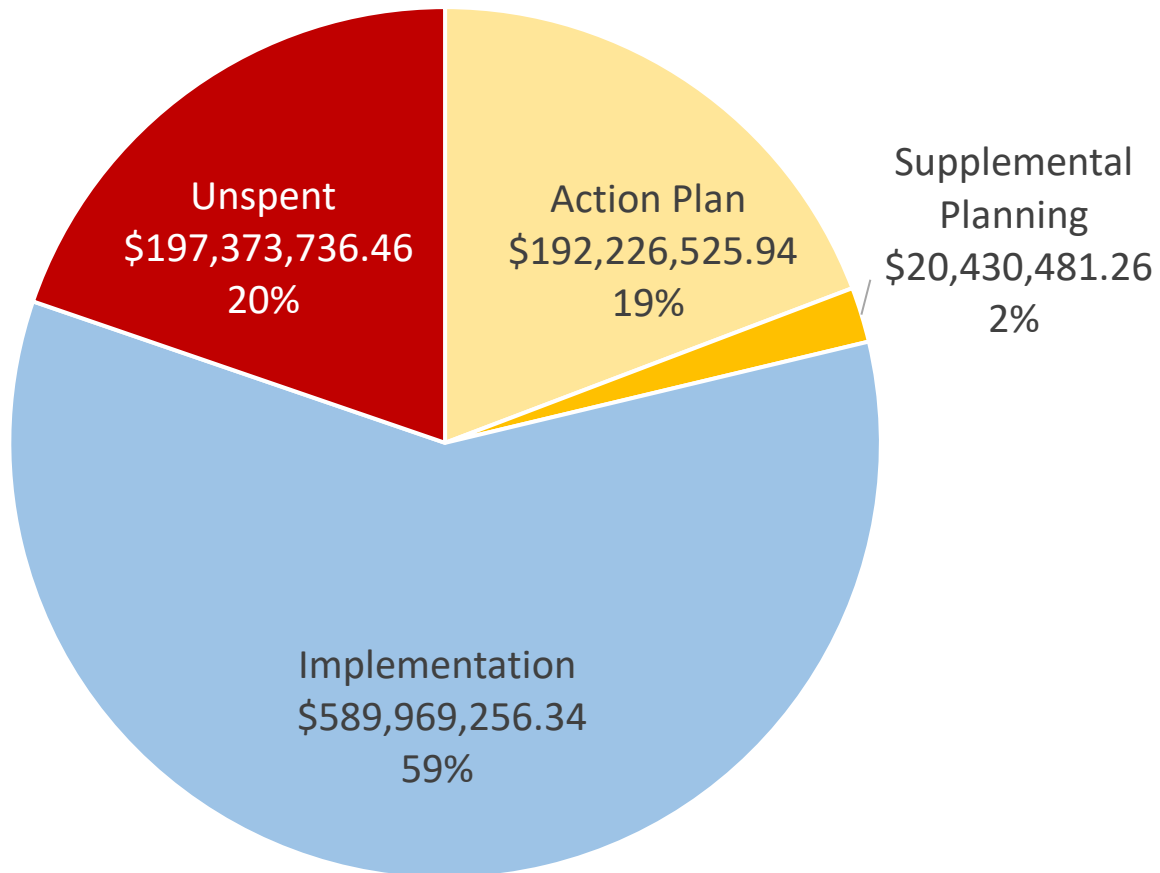


[Info Source: FHWA]

National Summary

SS4A Funding Allocation by Award Type (FY22)

Total Allocation: \$1 billion

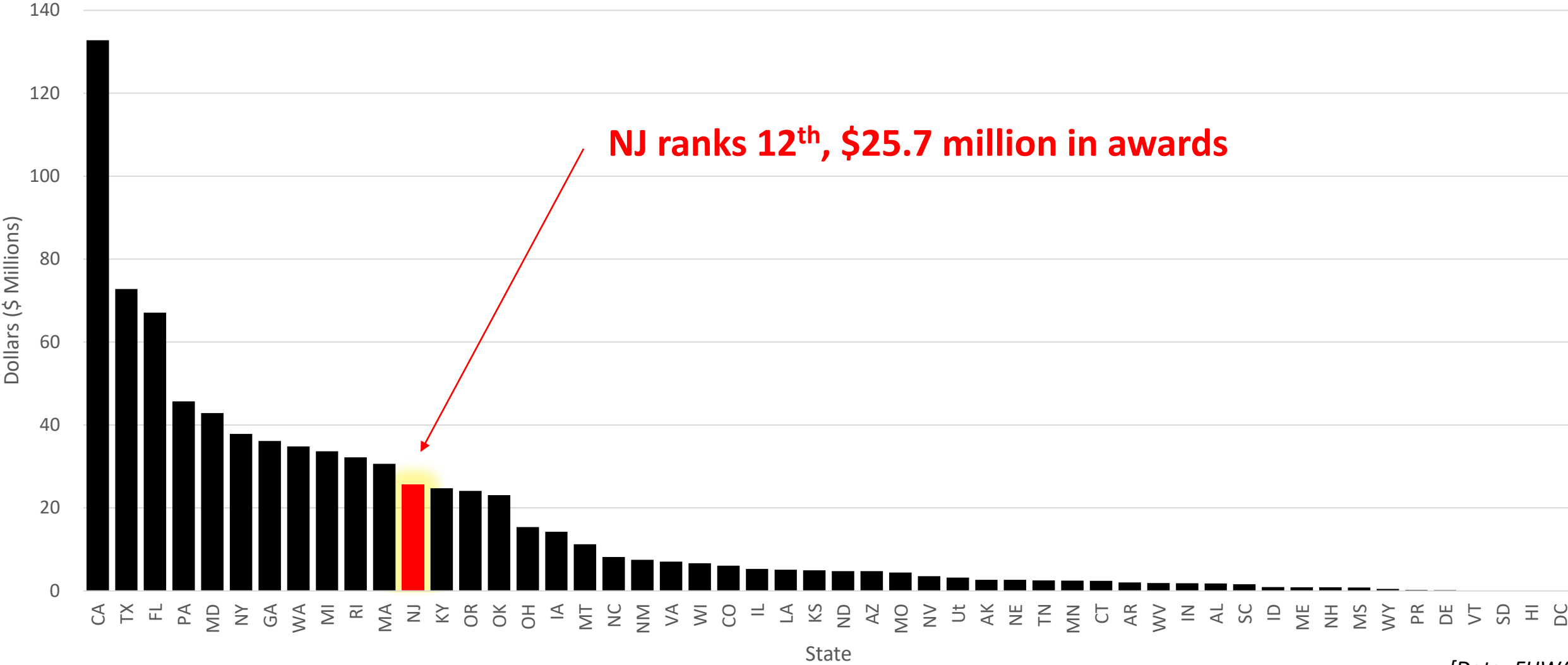


	Funded	Non-Funded
Safety Action Planning	\$192.2 million	\$0
Supplemental Planning	20.4 million	0
Implementation	590.0 million	1.98 billion
Total	\$802.6 million	\$1.98 billion

[Data: FHWA]

National Summary

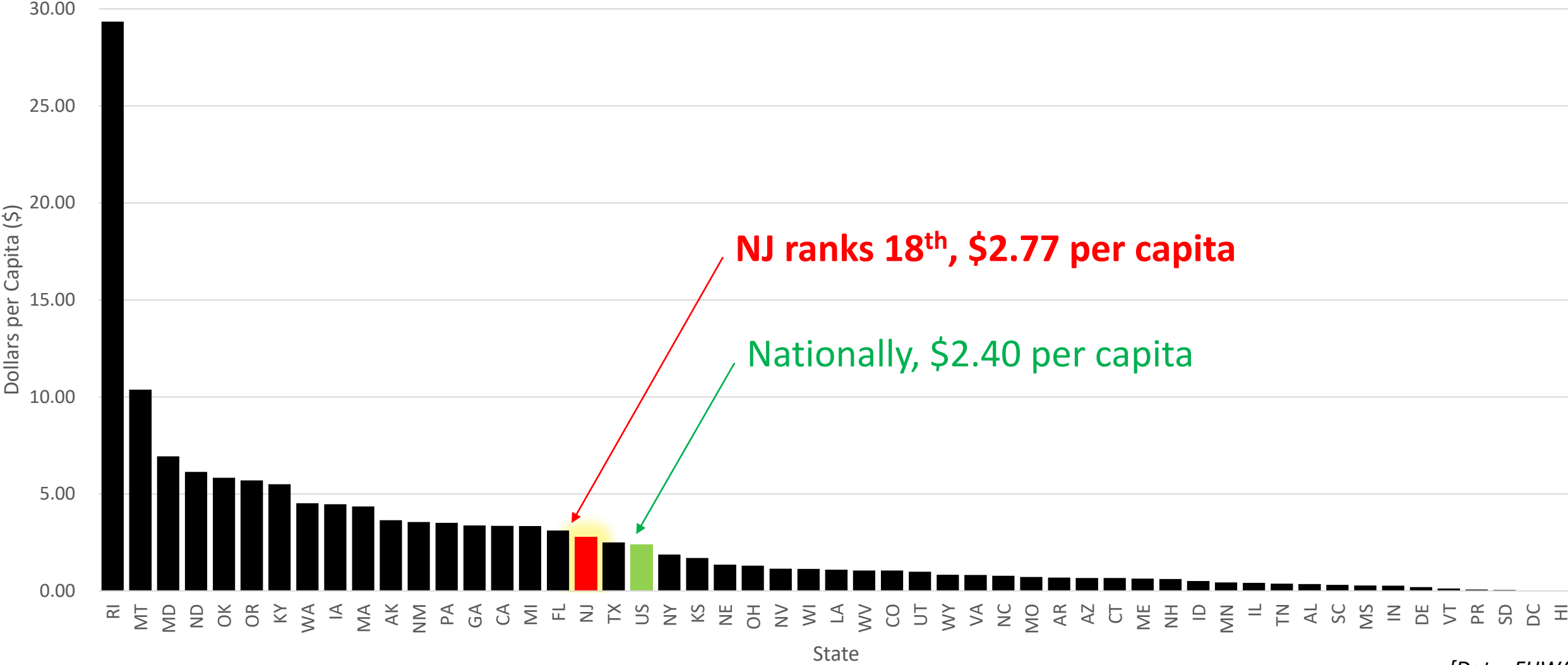
FY22 Award Totals by State (\$ Millions)



[Data: FHWA]

National Summary

FY22 Award Dollars per Capita by State (\$)



[Data: FHWA]

Safety Action Plan & Supplemental Planning Grants in New Jersey

Grant Type	Jurisdiction	Government Type	Award Amount
Safety Action Planning	New Jersey Sports and Exposition Authority (Meadowlands)	State	\$1,097,000
	Delaware Valley Regional Planning Commission*	MPO	654,222
	Essex County	County	500,000
	Hudson County	County	600,000
	Monmouth County	County	1,180,000
	Union County	County	874,089
	Borough of Dunellen	Municipal	546,000
	City of Cape May	Municipal	250,000
	City of Paterson	Municipal	500,000
	Township of Medford	Municipal	250,000
Total			\$5,527,894
Supplemental	City of Atlantic City	Municipal	200,000
Total			\$5,727,894

* DVRPC applied for a bi-state regional plan which received a total award of \$1,472,000 covering all 9 regional counties, including 4 in New Jersey

[Data: FHWA]

MPO and County-led Safety Planning Efforts

NJTPA

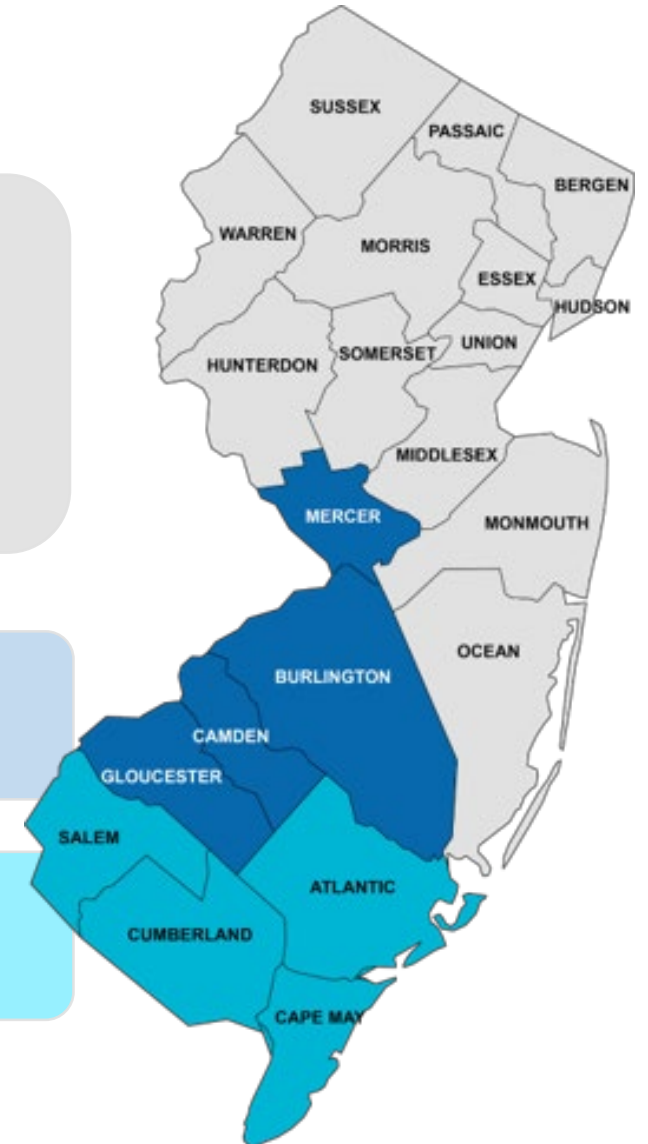
- Four counties already awarded SS4A grants:
 - Essex, Hudson, Monmouth, Union
- Intent to use other non-SS4A funds for county-level action plans

DVRPC

- Received \$1.5 million planning grant for entire 9 county jurisdiction

SJTPO

- Using HSIP funds to develop 4 individual county Road Safety Plans



Implementation Grant: City of Vineland, NJ

Chestnut Avenue Safety Improvements and Rehabilitation

Applicant Type	Award Amount
Municipal, Rural	\$20,000,000

Project Components

- Road Diet
- Lighting
- ADA-Compliant Walkways
- Bicycle Lanes
- Visibility Enhancements at Crosswalks
- Traffic Signal Modernization
- Sidewalk Rehabilitation



SJTPO Cumberland County Bicycle & Pedestrian Safety Action Plan



Selection of Priority Corridors in Cumberland County

Top 29 Corridors & Intersections

Ranked by Bicycle & Pedestrian Crash Severity / does not include State Routes



Indicates stand-alone intersection

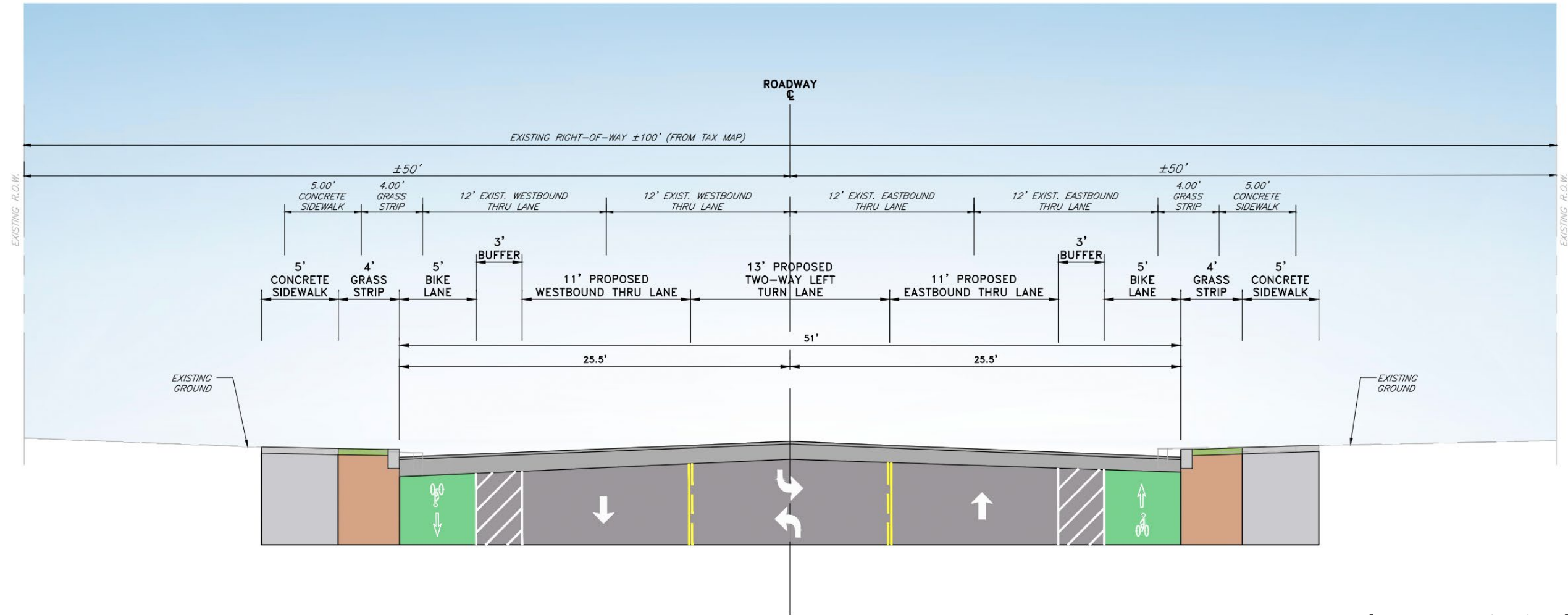
Indicates intersection located on high-ranking corridor

Indicates corridor has been combined with adjacent high ranking corridor

Rank	Type Rank	Municipality	Location	SRI	Jurisdiction	Bike/Ped		All		Street Start	Street End	MP Start	MP End
						K=A	Crashes	K=A	Crashes				
1	Corridor-1	Vineland City	Chestnut Avenue	06141029	Municipal	159.80	27	1990.9	663	Delsea Drive	Main Road	0.24	2.3
1	Corridor-1	Vineland City	Chestnut Avenue	06141029	Municipal	97.38	14	900.1	276	2nd St	Myrtle St	0.5	1.5
1A	Intersection-1	Vineland City	Chestnut Ave & East Ave	06141029 & 06141025	Municipal	46.90	4	279.2	90				
1B	Intersection-3	Vineland City	Melrose St & Chestnut Ave	06141331 & 06141332 & 06141029	Municipal	33.01	4	62.2	18				
2	Corridor-2	Millville City	High Street	06101010	Municipal	95.61	16	513.8	188	Main St	Harrison Ave	0	1
2A	Intersection-6	Millville City	High St & Broad St	06101010 & 06101015 & 06101253	Municipal	23.79	4	79.8	25				
2B	Intersection-7	Millville City	High St & Mcneal St	06101010 & 06101271	Municipal	22.79	3	50.0	15				
3	Corridor-3	Vineland City	East Avenue	06141025	Municipal	80.36	8	508.5	179	Florence Ave	Plum St	0.9	1.9
4	Corridor-4	Vineland City	Park Avenue	0000540	County	55.96	8	562.4	208	3rd St	Broadlawn Terrace	33.98	34.98
4A	Intersection-4	Vineland City	Park Ave & East Ave	0000540 & 06141025	Municipal	30.17	2	94.6	31				
5	Corridor-5	Millville City	Fourth Street	06101237	Municipal	52.51	5	228.0	71	Railroad Ave	F St	0	1
5A	Intersection-5	Millville City	Sassafras St & 4th St	06101265 & 06101237	Municipal	30.17	2	33.2	5				
6	Corridor-6	Millville City	Third Street & Wheaton Ave	0000555	Municipal	50.51	3	409.8	152	Main St	North of G St	10.05	11.05
7	Corridor-7	Vineland City	Seventh Street	06141362	Municipal	49.58	10	366.7	119	Catherine St	Wood St	0.1	1.1
8	Corridor-8	Bridgeton City	Irving Avenue	0000552	County	46.58	7	361.0	171	Laurel St	Rogers Ave	0	1
9	Corridor-9	Bridgeton City	Atlantic Street	06011182	Municipal	39.52	5	121.7	48	Harvard Ave	Vine St	0	0.9
10	Corridor-10	Vineland City	Oak Road	06000681	County	35.23	2	322.2	93	3rd St	Valley Rd	2.24	3.24
11	Corridor-11	Bridgeton City	Grove Street	060006095	County	35.23	2	116.3	38	Morris Ave	Eagle St	0.18	1.18
12	Corridor-12	Vineland City	South West Boulevard	060006155	Municipal	33.46	4	289.2	89	Chestnut Ave	Peach St	3.52	4.52
13	Intersection-2	Millville City	High St & Sharp St	06101010 & 06000667 & 06101336	County	33.46	4	120.3	31				
14	Corridor-13	Bridgeton City	Laurel Street	06011181	Municipal	30.85	6	148.4	84	Broad St	Irving Ave	0	0.5
15	Corridor-14	Millville City, Commercial Township	East Buckshutem Road	06000670	County	27.40	3	185.0	49	Silver Run Rd	Magnolia Dr	12.52	13.52
16	Corridor-15	Vineland City	Chestnut Avenue	06141029	Municipal	26.24	6	665.0	231	State St	Holmes Ave	1.6	2.6
17	Corridor-16	Bridgeton City	Commerce Street	06000670	County	24.79	5	170.9	71	Pearl St	Broad St	0	1
18	Corridor-17	Bridgeton City, Upper Deerfield Township	North Laurel Street	06000606	County	24.24	4	258.4	106	Irving Ave	North of Bridgeton Ave	0	1
19	Corridor-18	Millville City	Oak Street	06101251	Municipal	22.34	3	130.4	42	Dock St	10th St	0	0.83
20	Corridor-19	Millville City	Fifth Street	06101229	Municipal	22.34	3	114.5	45	Railroad Ave	D St	0.2	1.13
21	Corridor-20	Vineland City	Almond Street	06141359	Municipal	22.34	3	104.8	45	2nd St	East Ave	0.1	1.01
22	Corridor-21	Vineland City	Fourth Street	06141348	Municipal	21.34	2	283.9	104	Chestnut Ave	Erin St	0.2	1.14
23	Corridor-22	Vineland City	Brewster Road	06000672	County	20.18	5	282.5	121	Menantico Rd	Barbara Dr	0.41	1.41

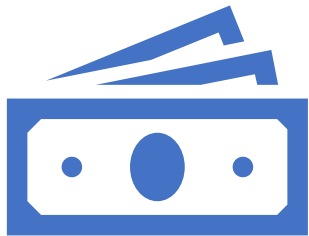
★ Location advanced for concept development and New Jersey's Local Safety Program funding

Chestnut Ave Concept Plan – Vineland, NJ



Key Lessons Learned from FY22

S | S
— | —
4 | A



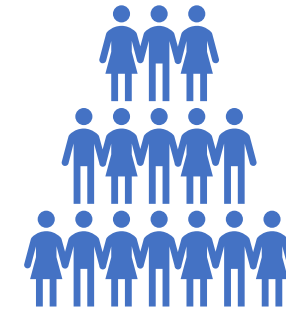
All submitted Safety Action Plan Grant applications were awarded



Implementation Grants were very competitive



Clear concept plans made applications more competitive



Equity, engagement, and demonstrated need were top considerations

Takeaways for Next Round

Quality of the Safety Action Plan matters

- Data-driven methods
- Site selection and concept plans
- Comprehensive public engagement
- Consideration of equity and underserved communities

NOFO for FY23 to be released in April

Due date likely Fall 2023

Considerations

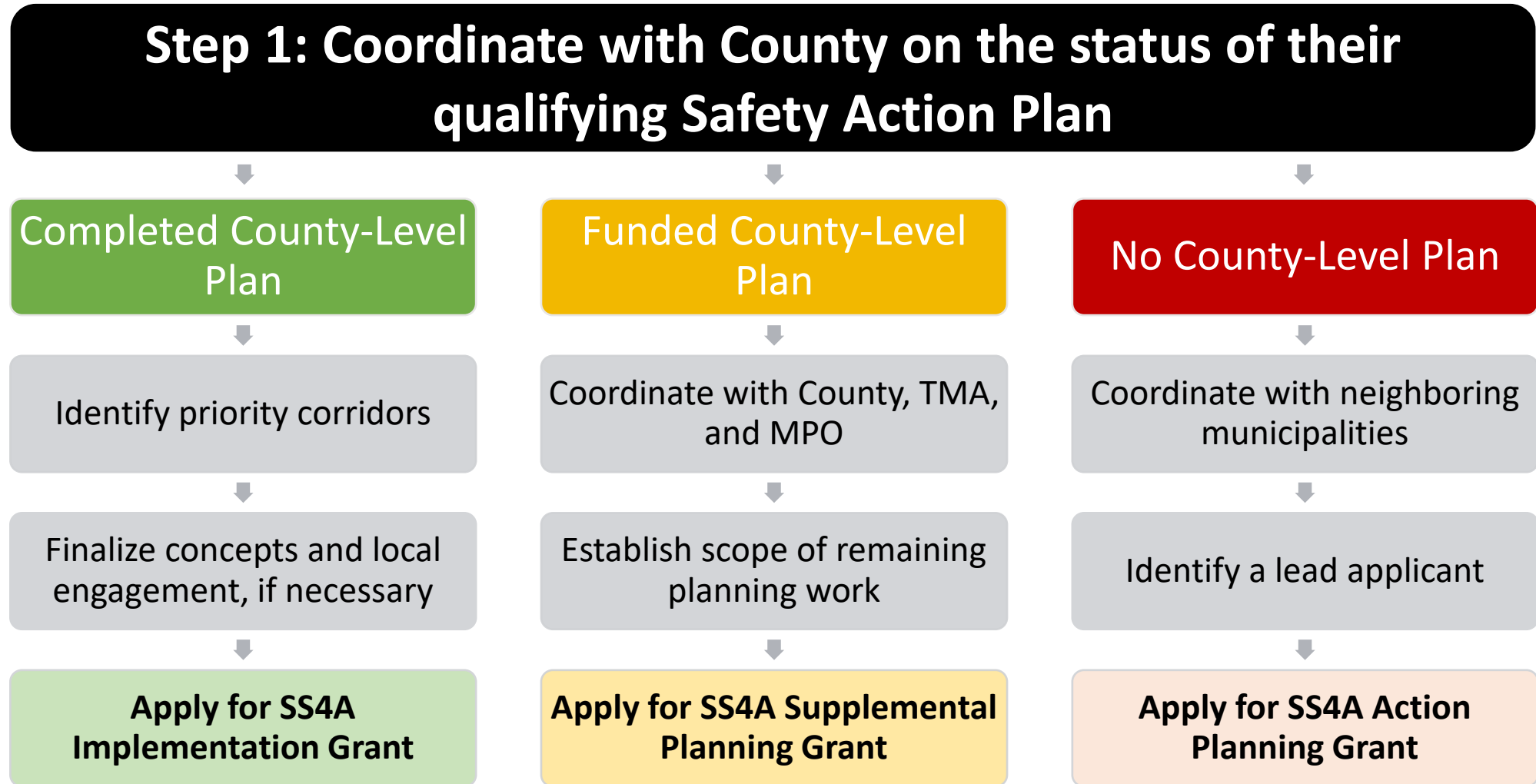
More coordination among entities

Larger scale plans (County or Regional) benefit

Capacity of qualified subject-matter experts

Maintain focus on vulnerable road users

What should municipalities apply for?



<https://www.transportation.gov/grants/SS4A/resources>

Safe Streets and Roads for All Grants

About Safe Streets and Roads for All Grants

Announcement

Webinar Series

How to Apply

Resources

FAQs

Awarded Projects

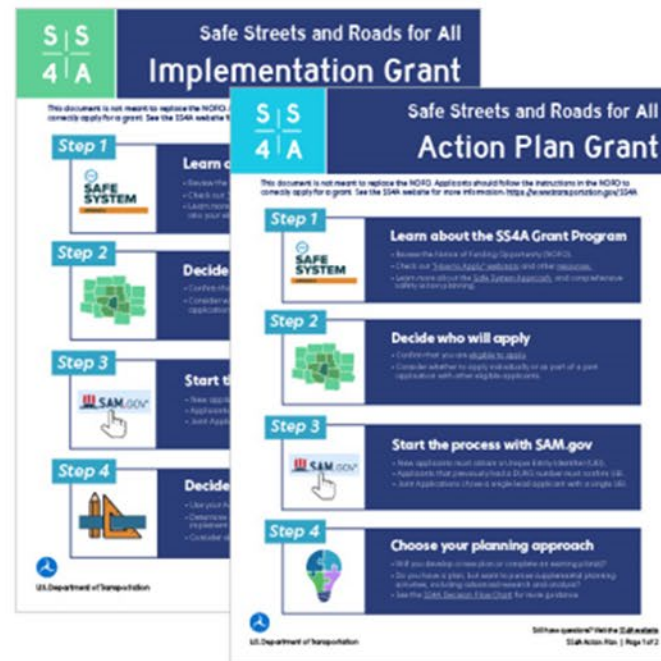
Grant Implementation

Resources

The following resources are intended to help interested stakeholders prepare to apply for a Safe Streets and Roads for All (SS4A) discretionary grant and conduct project planning and activities if awarded SS4A funding.

SS4A Application Aids

- [Action Plan Grant Information Sheet](#)
- [Implementation Grant Information Sheet](#)
- [Application Decision Flow Chart](#)
- [Action Plan Components](#) (from NOFO Table 1)
- [Self-Certification Eligibility Worksheet](#) (from NOFO Table 2)
- [Action Plan Grant Application Template](#)
- [Implementation Grant Application Template](#)
- [SS4A Match and Cost Share Examples](#)
- [Eligible and Ineligible SS4A Applicants](#)
- [Eligible and Ineligible SS4A Action Plans](#)
- [Eligible and Ineligible SS4A Implementation Grant Projects](#)
- [Calculating Average Annual Fatality Rate](#)
- [Calculating Percentage of Population in Underserved Communities](#)
- [Standard Forms \(SF\) Fact Sheet](#)



[Image: FHWA]

Thank you!



**NJ BICYCLE & PEDESTRIAN
RESOURCE CENTER**
Educate. Encourage. Empower.

**NEW JERSEY
Safe Routes to School**



www.saferoutesnj.org

Contact:

NJ Bicycle & Pedestrian Resource Center

njbikeped.org

Telephone: (848) 932-3714

Email: bikeped@ejb.rutgers.edu

Contact:

NJ Safe Routes Resource Center

saferoutesnj.org

Telephone: (848) 932-7901

Email: srts@ejb.rutgers.edu



RUTGERS

Edward J. Bloustein School
of Planning and Public Policy