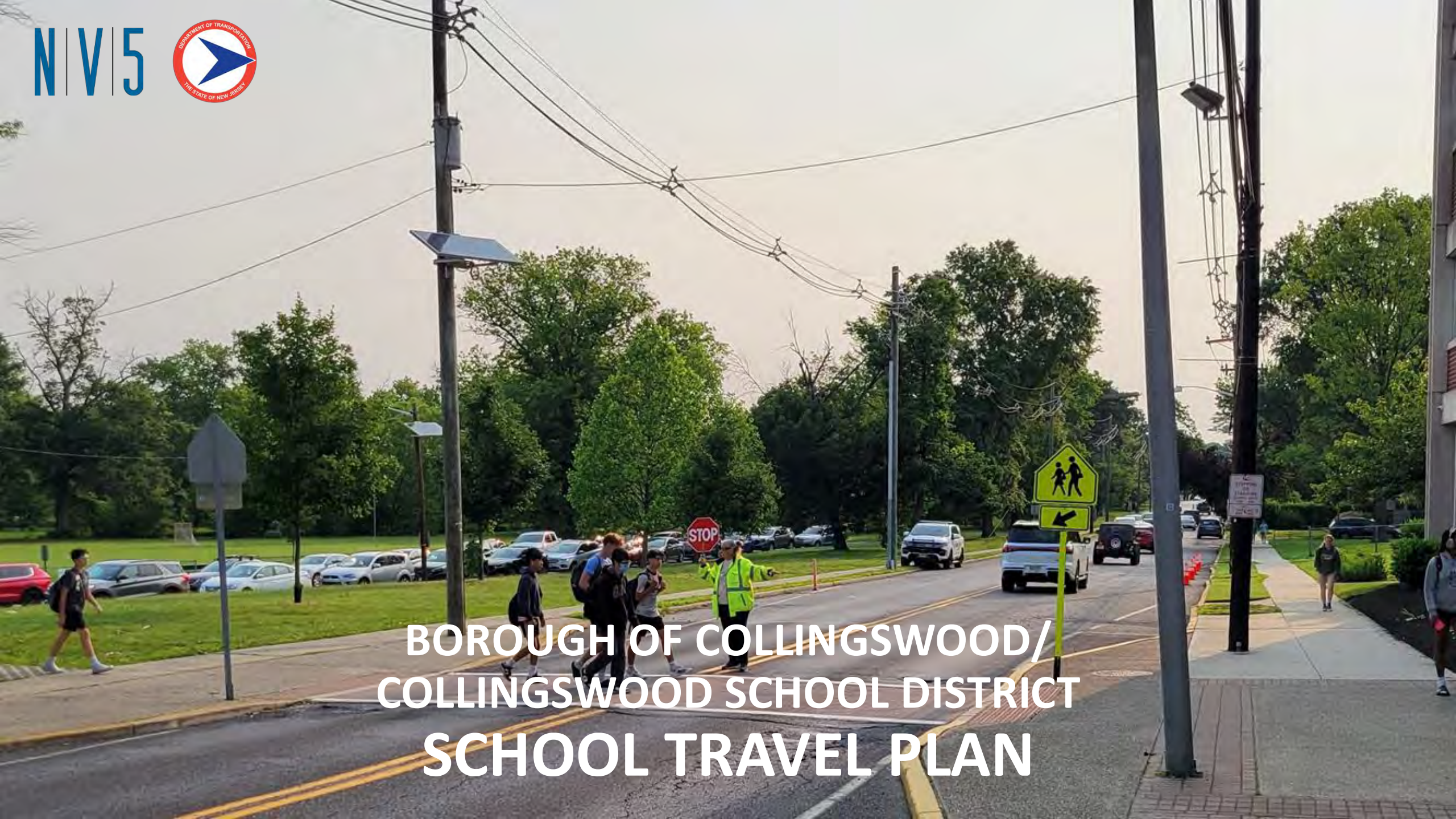


**BOROUGH OF COLLINGSWOOD/
COLLINGSWOOD SCHOOL DISTRICT
SCHOOL TRAVEL PLAN**





The Borough of Collingswood



Collingswood Public Schools



Collingswood Police Department



Camden County



New Jersey Department of Transportation



Cross County Connection TMA



Consultant Team

- School Travel Plan resource: **New Jersey Safe Routes**
<https://www.saferoutesnj.org/school-travel-plan-goals-and-actions/>
through the NJ Bicycle & Pedestrian Resource Center, Voorhees Transportation Center
- Information about **NJDOT Local Bicycle and Pedestrian Planning Assistance**:
<https://njbikeped.org/njdot/njdot-local-bicycle-and-pedestrian-planning-assistance-program/>
- In NJ, School Travel Plans are commonly prepared/led by the municipality's TMA
- **In this case, NJDOT funded the School Travel Plan through NV5's on-call Pedestrian & Bicycle Safety contract as part of NJDOT's Local Pedestrian & Bicycle Planning Assistance program**

NJDOT BPPA

NJDOT Bicycle and Pedestrian Planning Assistance (BPPA) Program

1994 - 2025
134 Local Bike/Ped
Planning Studies

Contact:
William Riviere,
NJDOT Principal Planner and
State BPPA Coordinator
William.Riviere@dot.nj.gov



Scan QR code
to view recent plans
and apply today!



Pre - 2000

- Audubon Borough Pedestrian Safety Assessment
- Village of Blairstown Loop Walk Study
- Jersey City Local Technical Assistance
- The Ocean City Bicycle and Pedestrian Needs Assessment
- Route 206 Pedestrian and Bicycle Compatibility Study
- Traffic Circulation and Pedestrian Safety Case Study
- 1990 Lehr Bike Ped Needs Assessment

2000 - 2004

- East Coast Greenway Northern NJ Route Location Study
- Haddonfield Township Traffic Calming Survey Report
- Township of Montclair Bicycle and Pedestrian Local Assistance Study
- Route 206 Pedestrian and Bicycle Accessibility Assessment
- West Windsor Township Bicycle/Pedestrian Plan
- Local Bicycle and Pedestrian Planning Assistance Existing Conditions Report
- Evesham Township Bikeway Plan
- Bicycle Pedestrian Trail Extension Study
- Borough of Pine Hill Shared Use Path
- Green Brook Multi-Use Trail Feasibility Study
- Borough of Somerdale Local Bicycle and Pedestrian Planning Assistance Project
- Borough of Stratford Bicycle and Pedestrian Circulation Plan
- Voorhees Township Bicycle and Pedestrian Master Plan Update
- Wildwood Crest Bicycle and Pedestrian Local Planning Assistance
- Kingston Bicycle/Pedestrian Circulation Study
- Medford Township Bicycle Network Plan
- Local Bicycle and Pedestrian Planning Assistance
- The New Brunswick Bikeway Study
- Borough of Oaklyn Pedestrian and Bicycle Study
- City of Summit Local Pedestrian and Bicycle Planning Assistance
- Siand Neighborhood Traffic Calming and Mobility Study
- Township of Clinton Bicycle Element
- Ninth Street Corridor Bicycle and Pedestrian Improvement Program
- Route 31 Multi-Use Path Study
- Borough of Roselle Pedestrian Safety Study
- Station Square: Pedestrian Compatibility Study
- Delaware River Heritage Trail Feasibility Study
- Fair Lawn Avenue Pedestrian Corridor Study
- Downtown Bicycle/Pedestrian Improvement Plan
- Morris County Bicycle/Pedestrian Master Plan Implementation Program & Users Guide

Pedestrian Corridor Study: Ringwood Avenue Township of Westfield Bicycle and Pedestrian Needs Assessment

2005 - 2009

- South Orange Bicycle and Pedestrian Circulation Plan
- Deplford Multi-Pedestrian/Unicycle Circulation Planning Study
- Eastampton Pedestrian/Bicycle Circulation Needs Study
- Stables and Pedestrian Planning Study
- Borough of Pederskill Bicycle and Pedestrian Trail Network Development Plan
- Haddonfield Waterfront Walkway/Berger County Implementation Study
- Point Pleasant Beach Borough Bicycle Plan
- Borough of West Cape May Bicycle and Pedestrian Action Plan
- Borough of Woodbine Local Bicycle and Pedestrian Planning Assistance Study
- East Coast Greenway Intersections Concept Development
- Lumberton Township Bicycle/Pedestrian Planning Assistance Study II
- Bicycle and Pedestrian Master Plan
- Princeton Borough Crosswalk Implementation Plan
- Riverton Borough Bicycle and Pedestrian Plan
- Market Street Traffic Calming Study
- Union County Comprehensive Bicycle Master Plan
- City of Bardonia Bicycle and Pedestrian Circulation Plan
- Cedar Grove Pedestrian and Bicycle Planning Program
- Lawrence Hopewell Trail Investigation
- Lumberton Township Bicycle/Pedestrian Planning Assistance Study I
- TCAJ Multi-Modal Access and Mobility Study
- Borough of Haddonfield Traffic Calming Study
- Route 31 Pedestrian Mobility Study

2010 - 2014

- Somers Point Bicycle and Pedestrian Circulation Study
- Atlantic City Bicycle and Pedestrian Plan
- Brigantine Beach Bicycle and Pedestrian Master Plan
- Point Pleasant Borough Bicycle and Pedestrian Circulation Plan
- Borough of Rutherford Bicycle and Pedestrian Plan
- Cherry Hill Bicycle and Pedestrian Master Plan
- Linwood Bicycle and Pedestrian Plan
- Pleasantville City Bicycle and Pedestrian Circulation Study
- Raritan Township Bicycle and Pedestrian Circulation Study
- Route 130/Route 206 Bicycle and Pedestrian Plan
- Freehold Borough Bicycle and Pedestrian Plan
- Hamilton Township Bicycle and Pedestrian Circulation Study
- Ocean City Rail Trail and Bicycle Boulevard Project - Haven Avenue Corridor Report
- Teaneck Bicycle and Pedestrian Master Plan
- Galloway Township Bicycle Master Plan Study
- City of Hoboken Bicycle and Pedestrian Plan
- Morrisstown Bicycle Plan Addendum
- Morrisstown Pedestrian Investigation
- Bicycle Circulation and Safety Plan
- Roadway Network Development Plan
- County Route 548 Bikeway Planning and Development Study
- Multi-Subdivisional Bicycle Plan
- Bicycle/Pedestrian Circulation Plan
- Linwood Route 27 Pedestrian Needs Study
- Ocean Township Bicycle and Pedestrian Network Feasibility Study
- Red Bank Bicycle/Pedestrian Planning Project

2015 - 2019

- GreenWay Circulation Plan
- EAST WINDSOR TOWNSHIP 2016
- Borough of Bay Head Complete Streets Bicycle & Pedestrian Plan
- Bike Ironbound Bicycle Plan for the City of Newark
- Bicycle & Pedestrian Plan Borough of Metuchen
- Chester Bicycle & Pedestrian Plan
- Tech Memo: Next Steps to Advance a Path across Lake along Former Rail Line
- Northfield Bicycle and Pedestrian Plan
- Downe Township Bicycle and Pedestrian Plan
- Bicycle/Pedestrian General Planning Assistance
- Ventnor/Margate Joint Bicycle and Pedestrian Circulation Plan
- Princeton Bicycle Master Plan
- City of Perth Amboy Bicycle & Pedestrian Plan



2020 - 2025



2026 and Beyond

Your plan for safe biking and walking facilities could be next!

An impressive "bookshelf"

Collingswood, New Jersey

N|V|5



Population: 14,186 (2020)

Two square miles

5 miles from Philadelphia

Vibrant downtown

Dense residential

Parks and green space

Bus and rail transit

Very walkable



Collingswood, New Jersey

N | V | 5



The Collingswood School District



A School Travel Plan is a SRTS planning element which seeks answers to the following questions:

- Where do students currently walk and bike?
- Where would students walk and bike if they could?
- What barriers to walking and biking exist, and what changes or improvements are needed so that students and parents will choose walking/biking?

Collingswood's School Travel Plan Goals

N|V|5



- Create a safer and more comfortable environment for students to walk and bike to school
- Encourage more students and parents to walk or bike to school
- Ease congestion and “chaos” at school arrival and dismissal

Project Scoping

N|V|5



- Project Management
- Data Collection & Evaluation
- “Walkshops” & Public Involvement
- Recommendations
- Final Report



Data Collection & Field Investigations

NIV 5



- Deployed “Miovision” cameras for qualitative review of arrival/dismissal procedures
- Crash analysis
- Multimodal field views to develop understanding of surrounding areas
- Prior bike/ped safety and planning studies

Walkshops and Public Involvement

NIV 5



Recommendations per the “five E’s”

Engineering

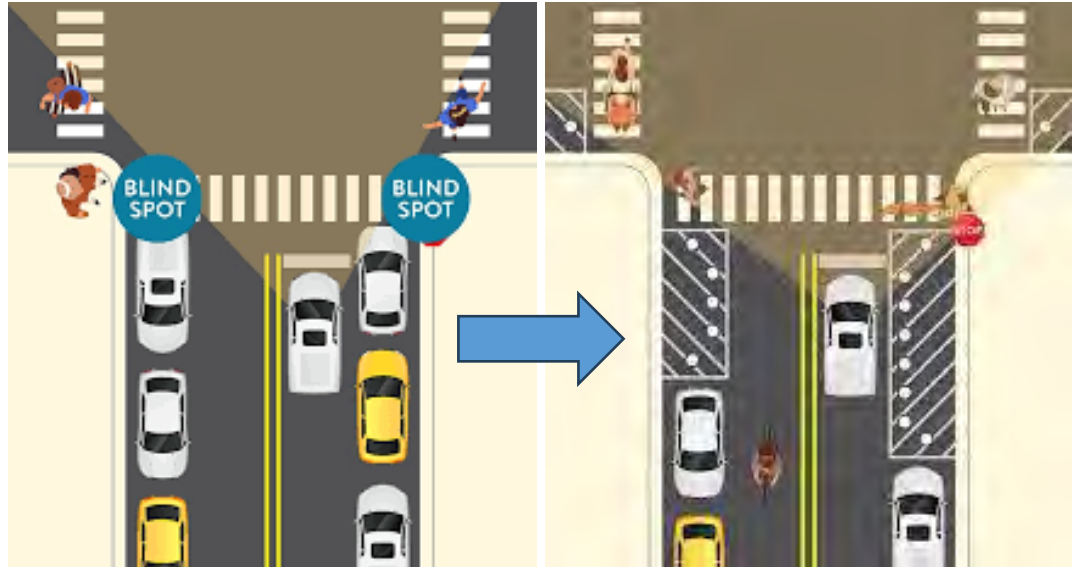
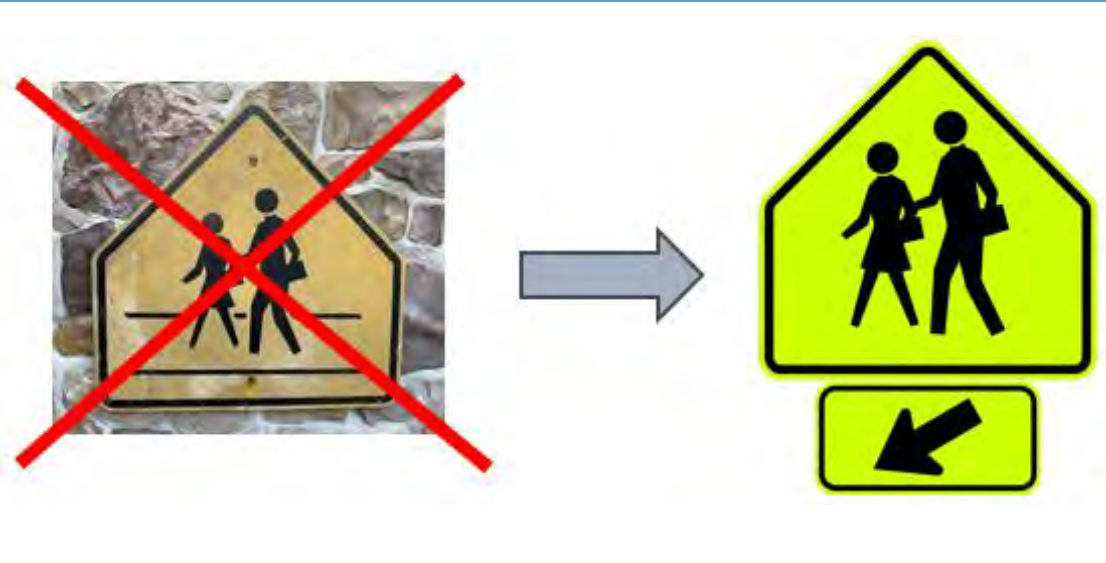
Education

Evaluation

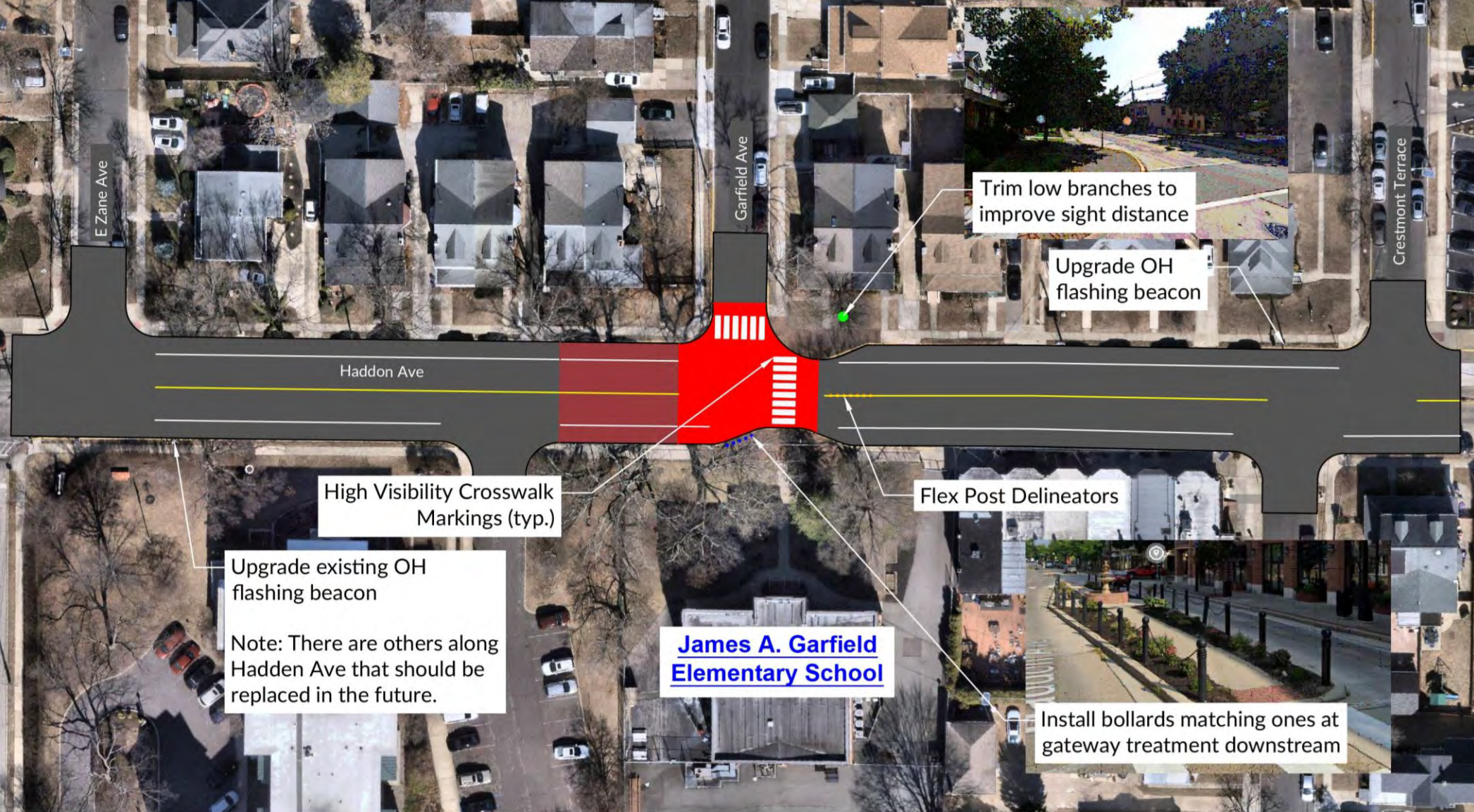
Encouragement

Enforcement

General Engineering Recommendations



Site-specific Engineering Recommendations



Site-specific Engineering Recommendations

NIV 5



Site-specific Engineering Recommendations



Education Recommendations

NIV 5



- Share recommended pickup/dropoff procedures in parent/student handbook
- Post School staff to guide parents on desired operation
- Social media/telephone reminders to keep safety in everyone's minds
- Host bike safety events with police, Cross County Connection, Voorhees Transportation Center



Encouragement Recommendations

NIV5



- “Bike Bus”
- Earlier dismissal for walking/biking students
- Maintenance agreements for ped/bike facilities
- Press releases, share walking/biking event information

Enforcement Recommendations

NV5



- Conduct spot enforcement of common violations
- Install radar speed feedback signs
- Ask police to discuss walking/biking safety at School/Borough events
- Increase police presence at school arrival/dismissal





- Conduct pre- and post-Plan reviews of how students travel to school, and speed studies near School areas
- Conduct periodic walking/biking assessments to help identify continuing challenges
- Evaluations can gauge effectiveness of School Travel Plan recommendations – what’s working, what’s not

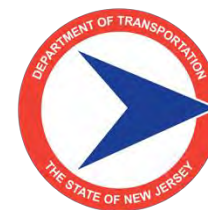
- Summarize data collection, analysis, recommendations
- Review funding opportunities
- Use School Travel Plan as supporting documentation for grant applications – School Travel Plan makes a school district or municipal agency eligible for extra points



Thank you! Questions? Comments?



Brian M. Stankus, P.E., PTOE
Senior Traffic Engineer
412 Mt. Kemble Avenue, Ste. 100C
Morristown, NJ 07960
brian.stankus@nv5.com
(973) 946-5605



William Riviere, BA, MPA
Principal Planner
NJDOT Division of Safety Programs
& Transportation Data
1035 Parkway Ave., Ewing, NJ 08625
william.riviere@dot.nj.gov
(609) 963-2230